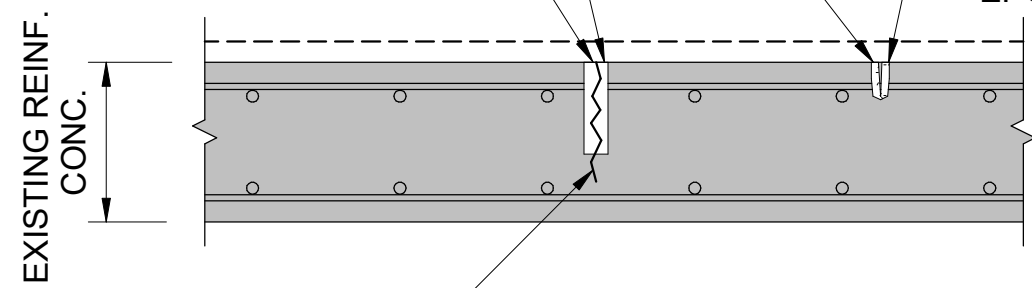


3/8" DIA. PLASTIC THREADED PORTS AT 2'-0" O.C. FOR INJECTION OF EPOXY GEL (ALT: USE FUNNELS OR BRUSHES FOR APPLYING EPOXY FILLER PER MANUFACTURERS' RECOMMENDATIONS.)

SOUND SURFACE CRACKS (CONCRETE DOES NOT SPALL OFF WITH MODERATE HAMMERING): ROUTE CRACK TO A MIN WIDTH OF 1/2" AND MIN. DEPTH OF 3/4", CLEAN AND INJECT WITH EPOXY GEL*

SOUND SURFACE CRACKS (CONCRETE SPALLS OFF WITH MODERATE HAMMERING): REMOVE UNSOUND CONCRETE, ROUTE CRACK TO A MIN WIDTH OF 1/2" AND MIN. DEPTH OF 3/4", CLEAN AND INJECT WITH EPOXY GEL*



EXISTING SURFACE CRACK, SEE ELEVATION FOR APPROXIMATE LOCATIONS V.I.F. ACTUAL SIZE AND EXTENT

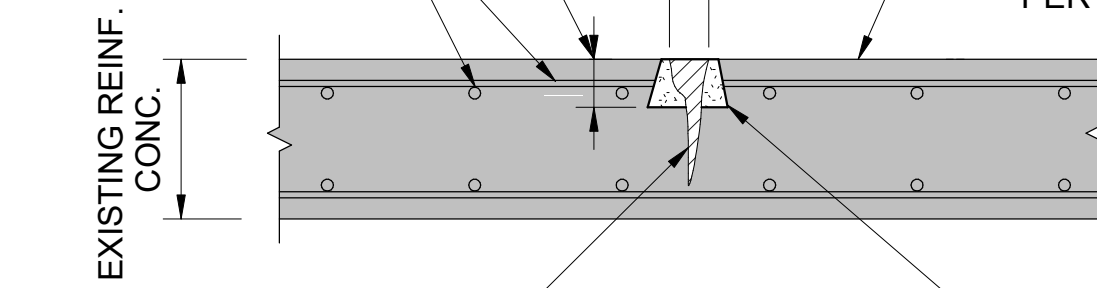
NOTE: FOR CRACKS SMALLER THAN 1/8" IN WIDTH/THICKNESS, NO REPAIR NECESSARY. FOR CRACKS LARGER THAN 1" IN WIDTH/THICKNESS, SEE DETAIL 2/S5.3

*EPOXY GEL SHALL BE SIKADUR 35 HI-MOD LV OR APPROVED EQUAL. CONTRACTOR SHALL SUBMIT SPECIFICATIONS OF ALL PRODUCTS TO THE CONTRACTING OFFICER PRIOR TO STAGING THE WORK.

1 TYPICAL DETAIL CONCRETE CRACK REPAIR, SMALL (KEYNOTE C-5)

S5.3 N.T.S.

PATCH MIN. 2" DEEP
DO NOT CUT EXIST. STEEL REINF. (TYP.)
1" OR GREATER
SOUND SURFACE CRACKS (TO A DEGREE WHERE CONCRETE SPALLS WOULD FALL OFF WITH MODERATE HAMMERING). ONCE COMPLETE, REMOVE UNSOUND CONCRETE, SQUARE OFF EDGES AND CREATE KEY AT PERIMETER FOR NEW PATCHING MATERIAL PER MANUF'S RECOMMENDATION (TYP.)



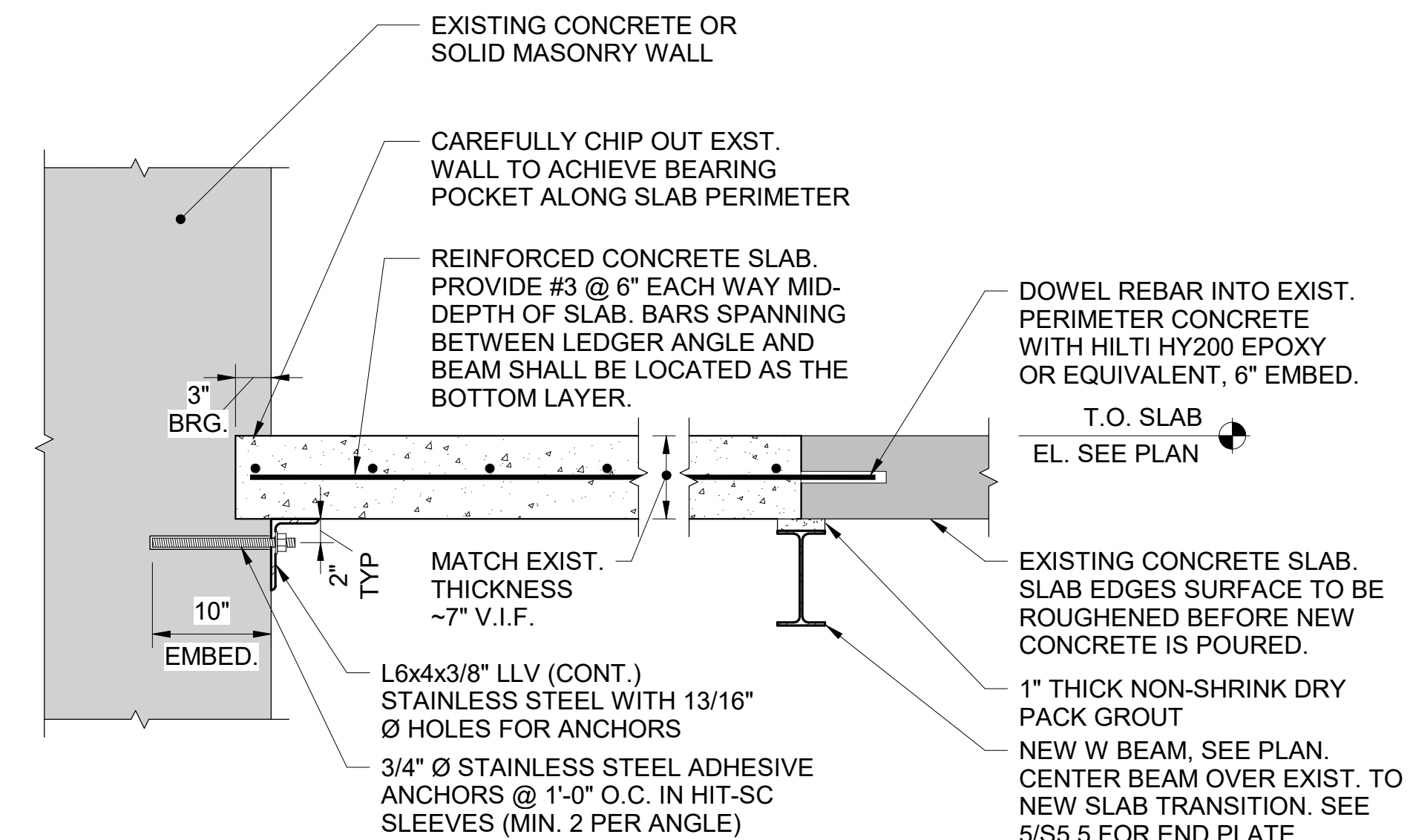
INJECT EPOXY INTO REMAINING AREA OF CRACK (IF ANY) BEYOND AREA OF REMOVALS PER DETAIL 1/S5.3

AFTER LOOSE CONCRETE IS REMOVED DOWN TO SOUND MATERIAL PREP SURFACE, COAT AND PATCH VOID FOLLOWING DETAILS 5, 6, & 7/S5.2 AS APPLICABLE.

*EPOXY GEL SHALL BE SIKADUR 35 HI-MOD LV OR APPROVED EQUAL. CONTRACTOR SHALL SUBMIT SPECIFICATIONS OF ALL PRODUCTS TO THE CONTRACTING OFFICER PRIOR TO STAGING THE WORK.

2 TYPICAL DETAIL CONCRETE CRACK REPAIR, LARGE (KEYNOTE C-5)

S5.3 N.T.S.

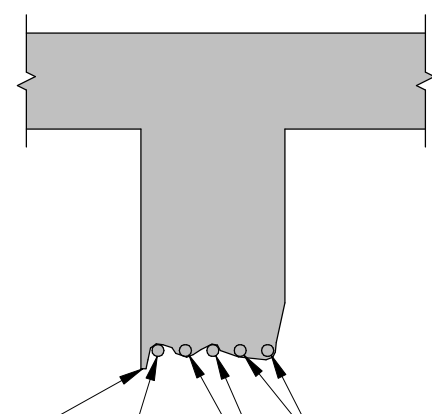


NOTE: CONTRACTOR TO PERFORM NON-DESTRUCTIVE EVALUATION TO LOCATE EXISTING CONCRETE REINFORCEMENT PRIOR TO ANCHORAGE OR EMBEDMENT INSTALLATION.

3 TYPICAL SHELF ANGLE AT EXISTING LOAD BEARING WALL

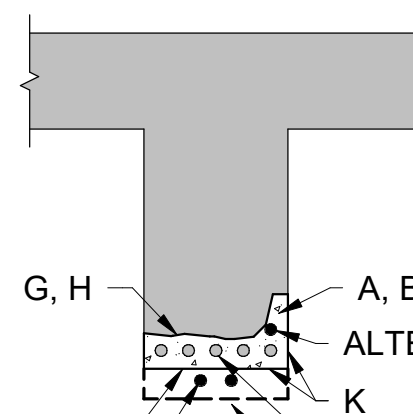
S5.3 N.T.S.

BOTTOM AND SIDE COVER LOSS
SOME BARS EXPOSED AND CORRODED WITH >20% SECTION LOSS



EXISTING CONDITIONS

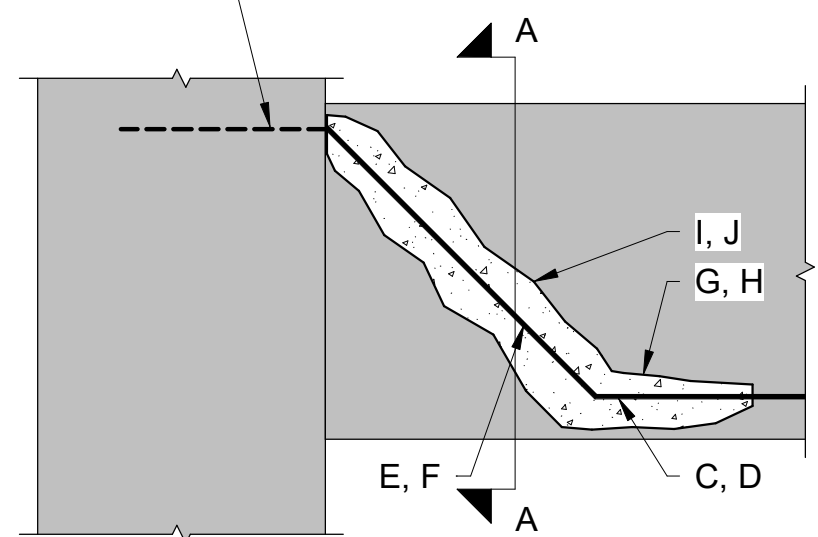
SOME BARS STILL WITHIN SOUND CONCRETE
SOME BARS EXPOSED AND CORRODED WITH <20% SECTION LOSS



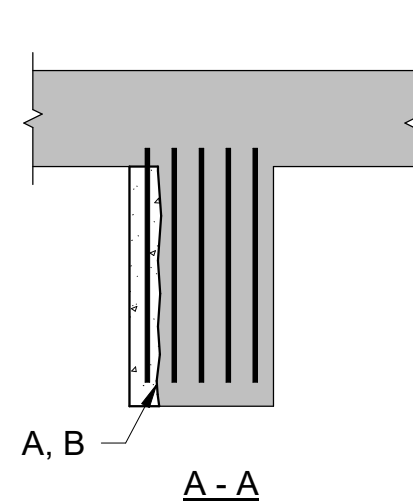
NEW CONDITIONS

TYPICAL BEAM/GIRDER BOTTOM BAR REPAIR

AT SPLICED DIAG. BARS, DOWEL & GROUT NEW BARS



TYPICAL BEAM/GIRDER SHEAR END REPAIR

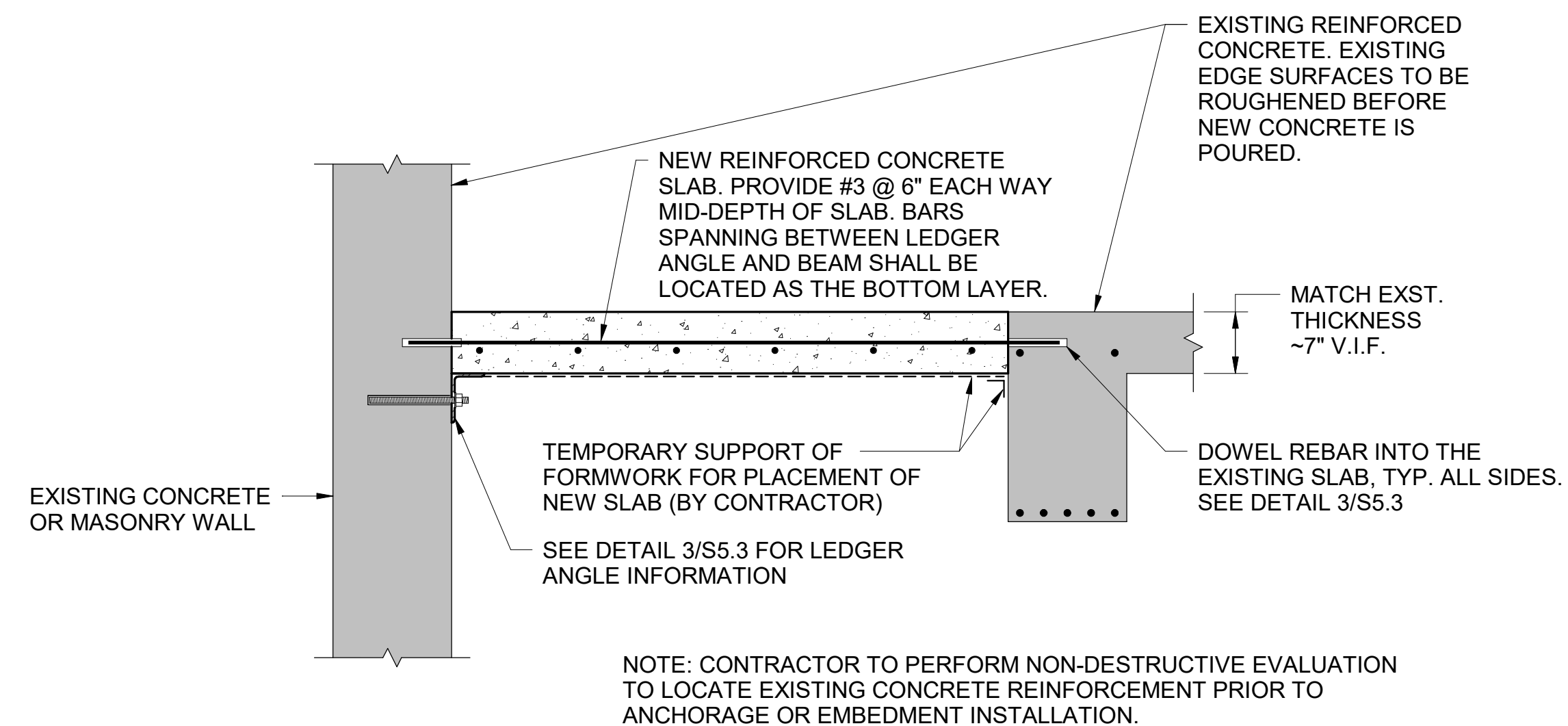


NOTES:

- ALPHABETICAL KEYNOTES IN REPAIR DETAIL CORRESPOND TO "NOTES - CONCRETE REPAIRS: NOTE #4 ENTITLED CONCRETE REPAIR SEQUENCE & CONSTRUCTION NOTES" ON S5.1.
- WHERE ADDED SPLICED REINFORCEMENT IS REQUIRED, ASSUME (2) NEW SPLICED BARS.
- REFER TO DETAILS 5 & 6 ON S5.2. FOR ADDITIONAL INFORMATION ON CONCRETE REPAIR SCOPE. PROVIDE STAINLESS STEEL HOOKED DOWELS SET IN REPAIR MATERIAL AT ALL C-6 APPLICATIONS.

4 TYPICAL DETAIL - CONCRETE BEAM/GIRDER REPAIR (KEYNOTE C-6)

S5.3 N.T.S.



NOTE: CONTRACTOR TO PERFORM NON-DESTRUCTIVE EVALUATION TO LOCATE EXISTING CONCRETE REINFORCEMENT PRIOR TO ANCHORAGE OR EMBEDMENT INSTALLATION.

5 TYPICAL DETAIL - FULL BAY REPLACEMENT WITH FORMED CONCRETE (KEYNOTE C-7)

S5.3 N.T.S.



A/E FIRMS	DESIGNED:
ARCH: QUINN EVANS 219 1/2 N. MAIN STREET ANN ARBOR, MI T: 734.663.5888	KH
ENG: SIMAN 211 N. 4TH AVE. ANN ARBOR, MI T: 734.800.2460	CADD: CM
	TECH. REVIEW: NH
	DATE: 10.27.2023

DESIGNED:	SUB SHEET NO.
KH	02
CADD:	S5.3
CM	
TECH. REVIEW:	
NH	
DATE:	
10.27.2023	

02
S5.3

TITLE OF SHEET
LIBBEY BATHHOUSE
TYPICAL CONCRETE
REPAIR DETAILS
REHABILITATE BATHHOUSES
HOT SPRINGS NATIONAL PARK

DRAWING NO.	128
	182951
PMIS/PKG NO.	318915
	223 OF 286