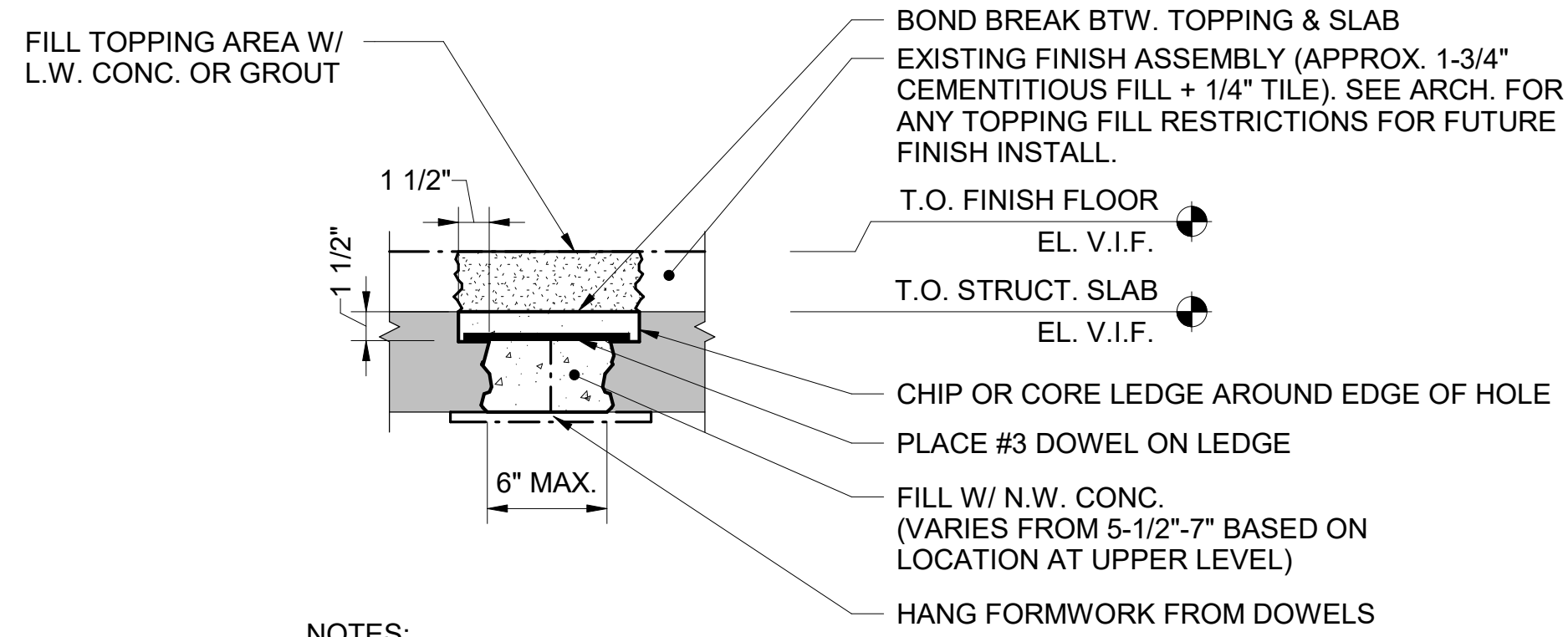


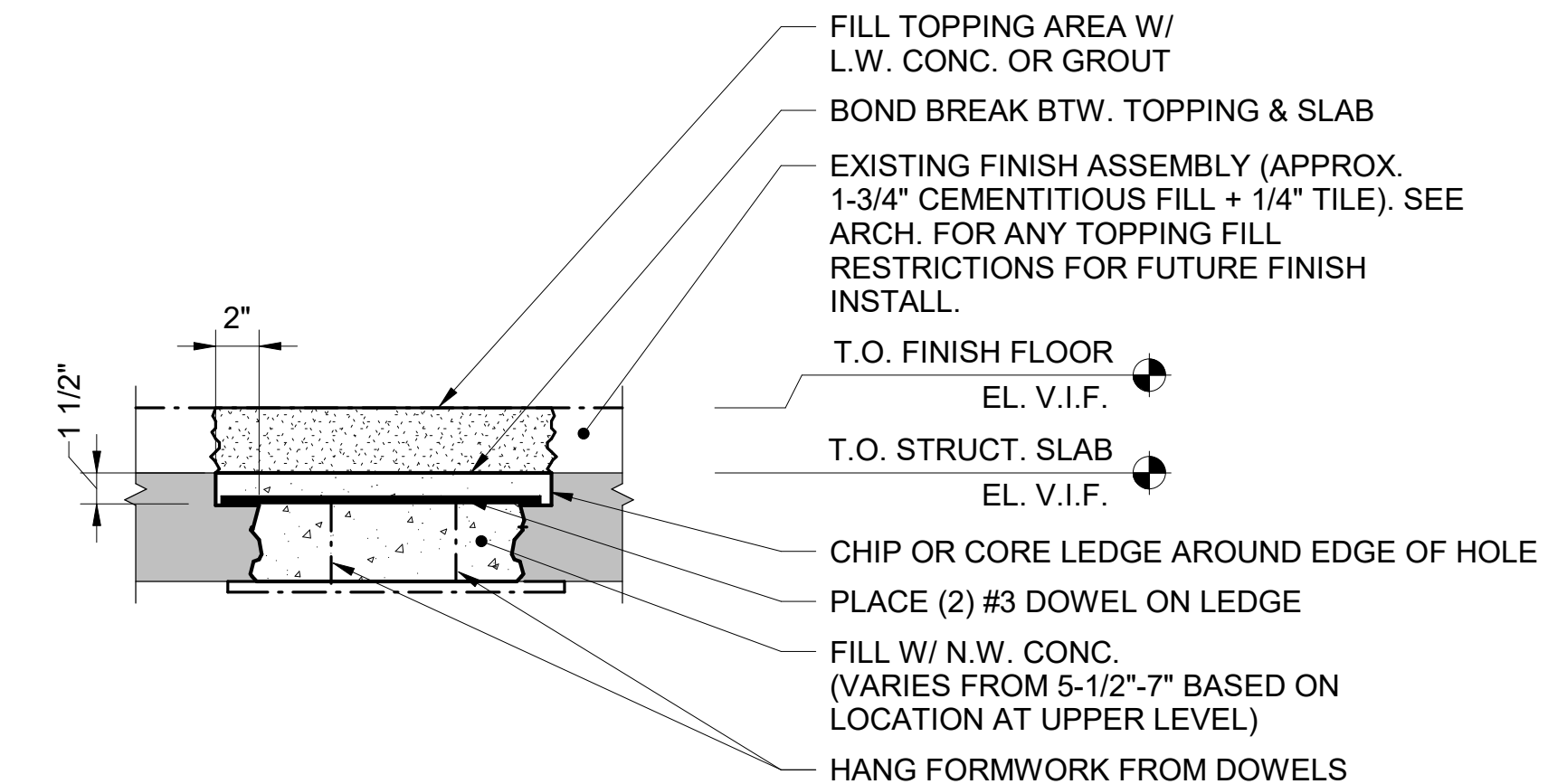
NOTE: DO NOT UNDERMINE EXIST. SLAB.

1 S5.2 TYPICAL ATTACHMENTS OF NEW SLAB ON GRADE TO EXISTING (KEYNOTE C-1) N.T.S.



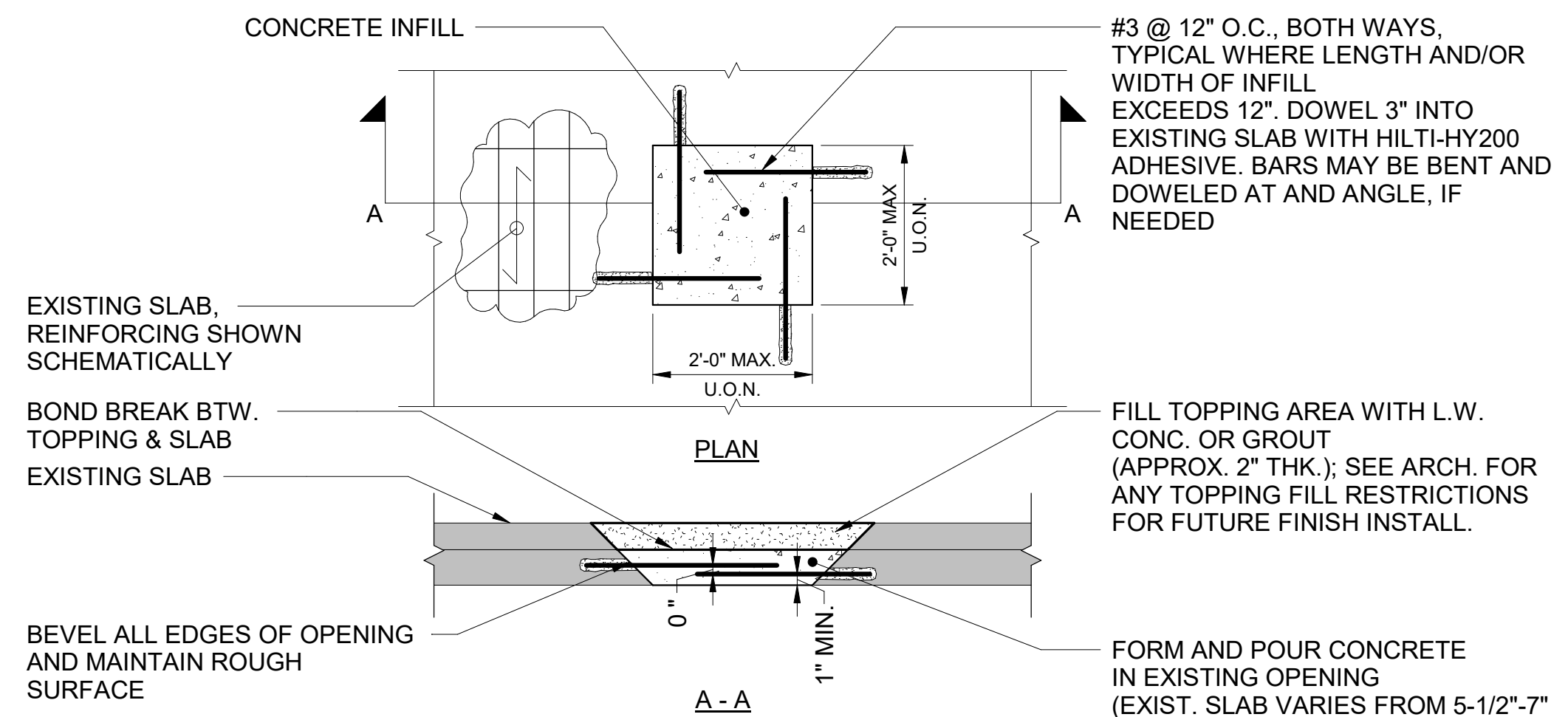
- NOTES:
- AS AN ALTERNATIVE TO LEDGE & DOWELS, CONTRACTOR MAY ROUGHEN VERT. SURFACES AND USE PATCHING MORTAR FOR INFILL.
  - CONTRACTOR TO REMOVE ANY CONDUIT, LIGHT BOXES, OR OTHER EMBED. MATERIALS PRIOR TO REPAIR.

2 S5.2 TYPICAL SLAB PATCH AT EXIST. OPENING LESS THAN 6" (KEYNOTE C-2) N.T.S.



NOTE: CONTRACTOR TO REMOVE ANY CONDUIT, LIGHT BOXES, OR OTHER EMBED. MATERIALS PRIOR TO REPAIR.

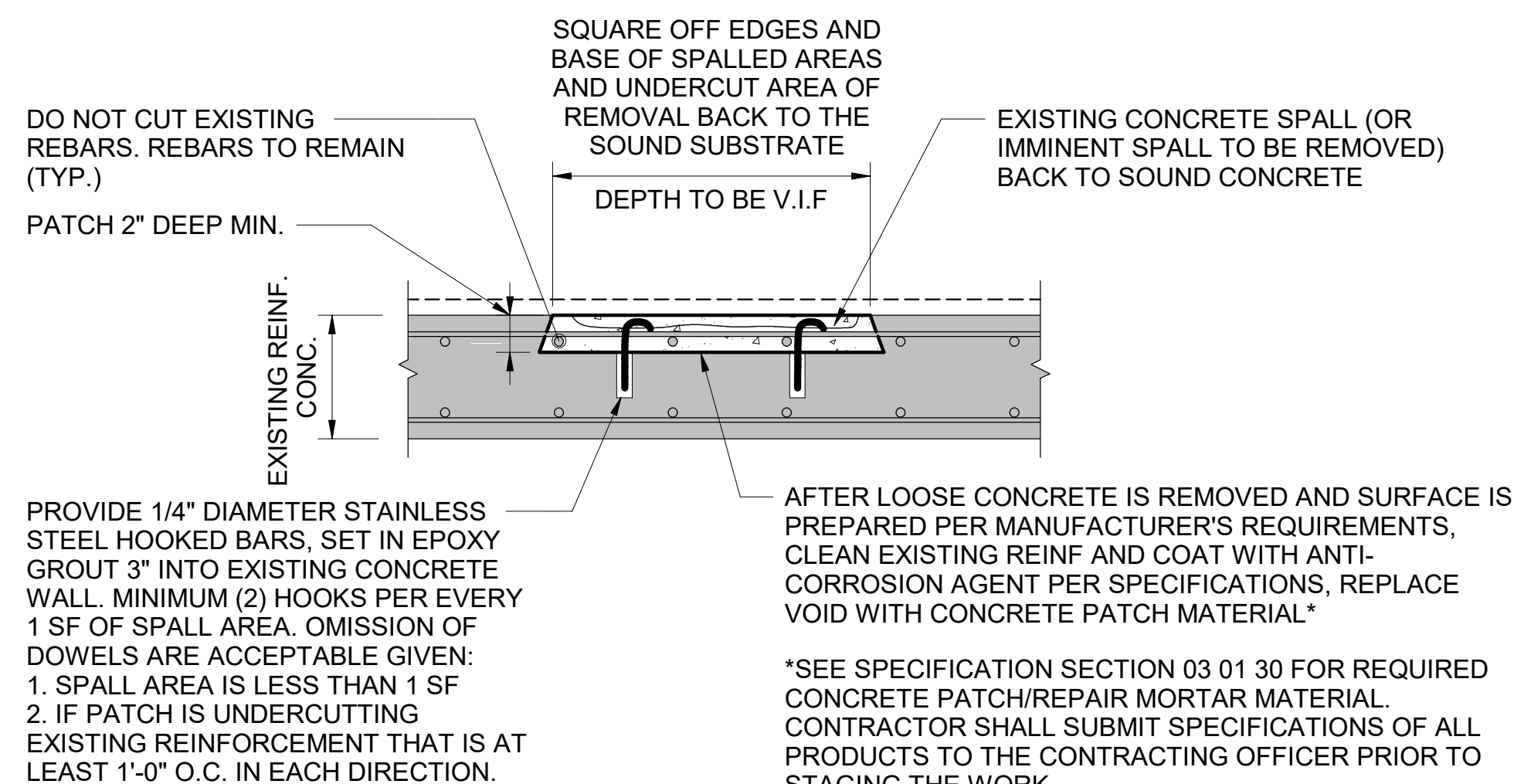
3 S5.2 TYPICAL SLAB PATCH AT EXISTING OPENING 6" TO 12" (KEYNOTE C-3) N.T.S.



- NOTES:
- CONTRACTOR TO REMOVE ANY CONDUIT, LIGHT BOXES, OR OTHER EMBED. MATERIALS PRIOR TO REPAIR.
  - WHEN BEVELING EDGES OF EXISTING OPENINGS, CONTRACTOR SHALL TAKE CARE TO AVOID EXCESSIVE SLAB REMOVAL OR DAMAGE TO SURROUNDING EXISTING SLAB.
  - CONTRACTOR SHALL USE HAND TOOLS FOR SLAB PREPARATION.
  - WHEN EXISTING REINFORCEMENT IS PRESENT, PROVIDE MINIMUM 1" COVER ALL AROUND BAR TO ALLOW NEW CONCRETE TO ENGAGE EXISTING BAR. REMOVE ANY CORROSION FROM EXISTING REINFORCING.

4 S5.2 TYPICAL SLAB PATCH AT EXISTING OPENING 12" TO 24" (KEYNOTE C-3) N.T.S.

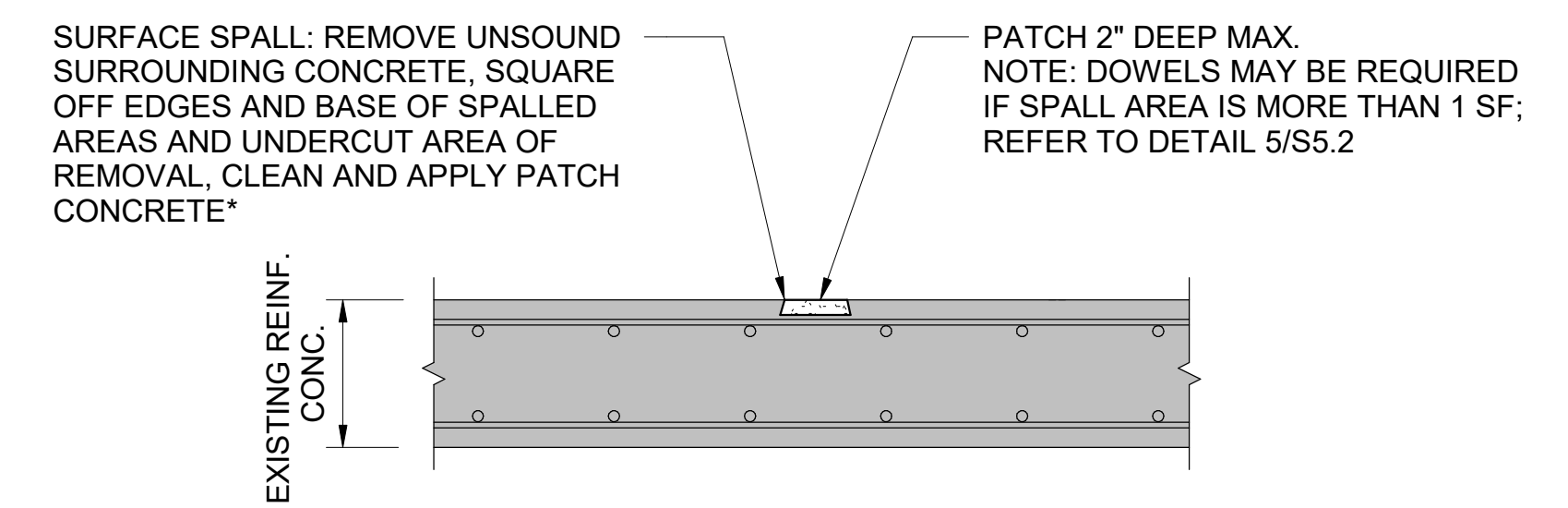
- REPAIR PROCEDURE:
- REMOVE LOOSE CONCRETE AND FOREIGN MATERIALS, ROUGHEN EXISTING CONCRETE SURFACES THAT ARE TO RECEIVE PATCH CONCRETE.
  - REMOVE RUST, SCALE, OIL AND ANY OTHER FOREIGN MATERIALS FROM STEEL REINFORCING BARS.
  - COAT EXISTING CONCRETE AND STEEL WITH ANTI-CORROSION AGENTS AS SPECIFIED BY MANUFACTURER.
  - PREPARE AND APPLY PATCH CONCRETE PER MANUFACTURER'S SPECIFICATION. FOLLOW INSTRUCTIONS FOR LIFT LAYERS, ENVIRONMENT CONDITIONS, TOOLS, AND ALL OTHER PROCEDURES.



\*SEE SPECIFICATION SECTION 03 01 30 FOR REQUIRED CONCRETE PATCH/REPAIR MORTAR MATERIAL. CONTRACTOR SHALL SUBMIT SPECIFICATIONS OF ALL PRODUCTS TO THE CONTRACTING OFFICER PRIOR TO STAGING THE WORK.

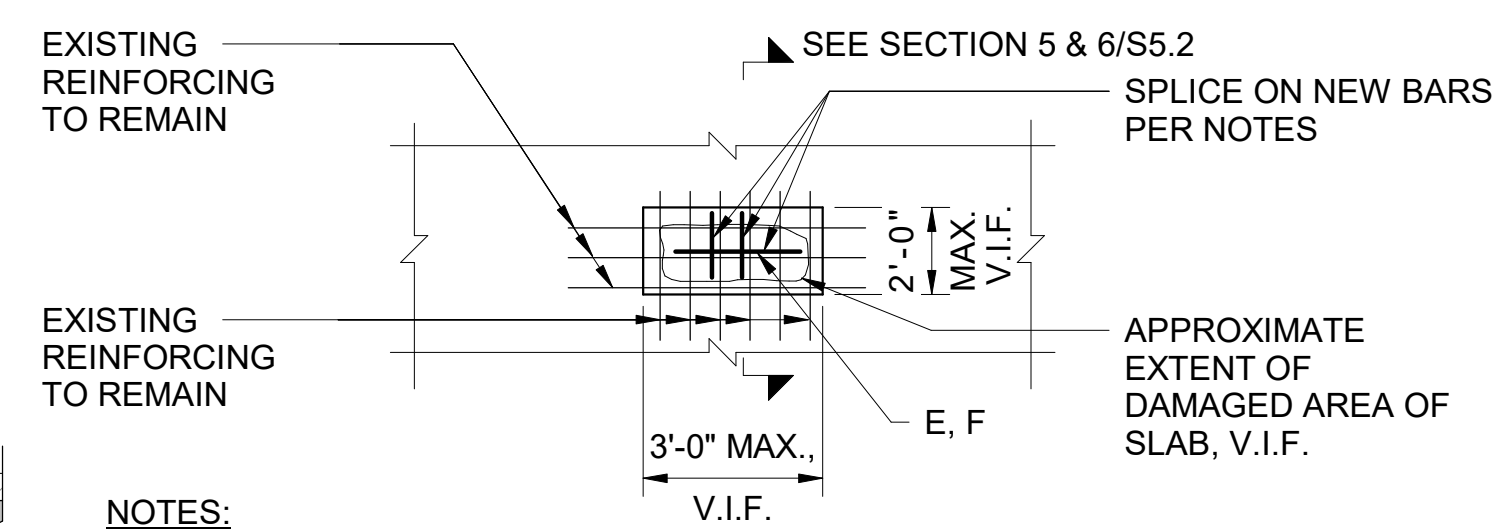
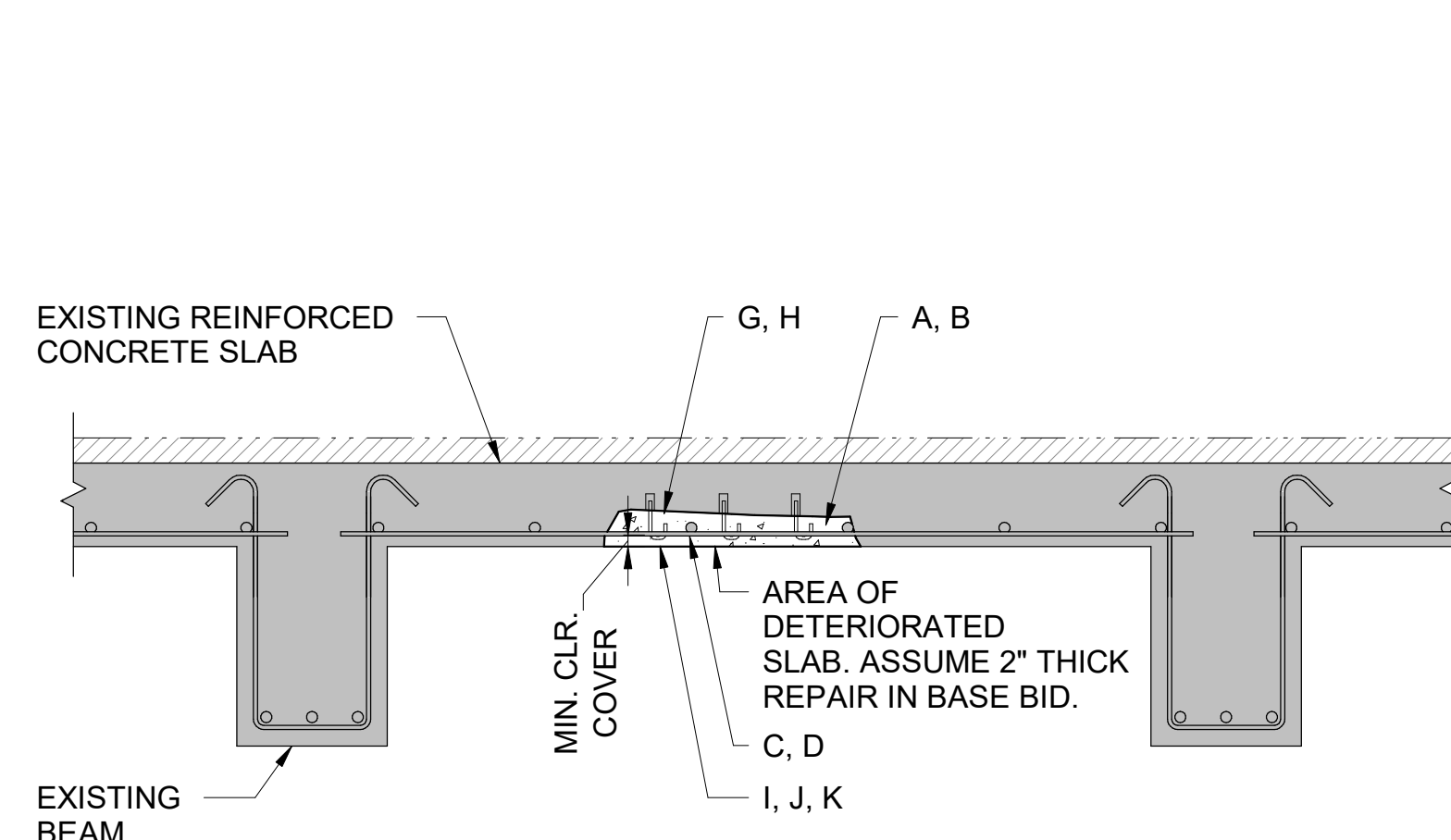
5 S5.2 TYPICAL DETAIL CONCRETE SPALL PATCH REBAR EXPOSED BUT INTACT (KEYNOTE C-4 & C-6) N.T.S.

- REPAIR PROCEDURE:
- REMOVE LOOSE CONCRETE AND FOREIGN MATERIALS, ROUGHEN EXISTING CONCRETE SURFACES THAT ARE TO RECEIVE PATCH CONCRETE.
  - PREPARE AND APPLY PATCH CONCRETE PER MANUFACTURER'S SPECIFICATION. FOLLOW INSTRUCTIONS FOR LIFT LAYERS, ENVIRONMENT CONDITIONS, TOOLS, AND ALL OTHER PROCEDURES.



\*SEE SPECIFICATION SECTION 03 01 30 FOR REQUIRED CONCRETE PATCH/REPAIR MORTAR MATERIAL. CONTRACTOR SHALL SUBMIT SPECIFICATIONS OF ALL PRODUCTS TO THE CONTRACTING OFFICER PRIOR TO STAGING THE WORK.

6 S5.2 TYPICAL DETAIL CONCRETE SPALL PATCH REBAR NOT EXPOSED (KEYNOTE C-4 & C-6) N.T.S.



- NOTES:
- ALPHABETICAL KEYNOTES IN REPAIR DETAIL CORRESPOND TO "NOTES - CONCRETE REPAIRS: NOTE #4 ENTITLED CONCRETE REPAIR SEQUENCE & CONSTRUCTION NOTES" ON S5.1.
  - REFER TO DETAILS 5 & 6 ON S5.2 FOR ADDITIONAL REPAIR DIRECTIVES.
  - REPAIR MAY BE USED ON TOP OR BOTTOM SURFACE OF SLAB AND WALLS. SEE NOTES FOR CONCRETE PATCHING MATERIALS FOR HORIZONTAL AND VERTICAL APPLICATIONS.

PLAN

7 S5.2 TYPICAL DETAIL - BAR REINFORCED SLAB & WALL REPAIR (KEYNOTE C-4) N.T.S.

A/E FIRMS ARCH: QUINN EVANS 219 1/2 N. MAIN STREET ANN ARBOR, MI T: 734.663.5888 ENG: SIMAN 211 N. 4TH AVE. ANN ARBOR, MI T: 734.900.2460	DESIGNED: KH CADD: CM TECH. REVIEW: NH DATE: 10.27.2023	SUB SHEET NO. <b>02</b> <b>S5.2</b>	TITLE OF SHEET LIBBEY BATHHOUSE <b>TYPICAL CONCRETE REPAIR DETAILS</b> REHABILITATE BATHHOUSES HOT SPRINGS NATIONAL PARK	DRAWING NO. <b>128</b> <b>182951</b> PMIS/PKG NO. 318915 222 OF 286
---	--	---	--	--



10/26/2023 1:33:34 PM