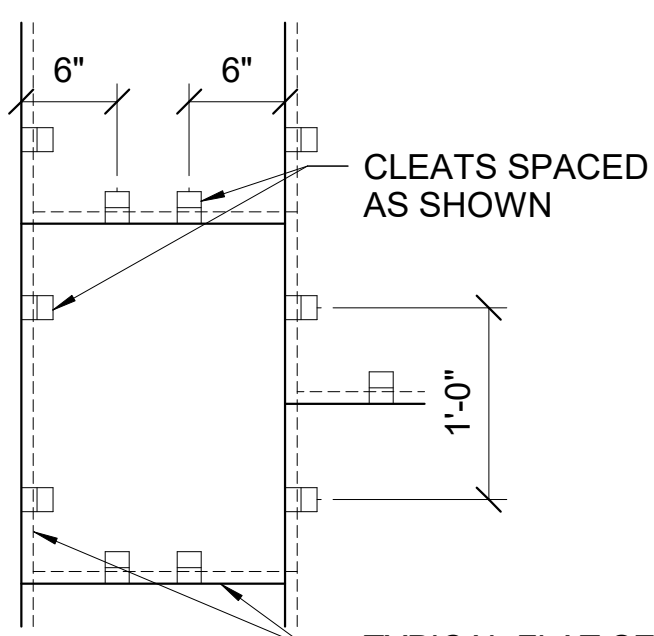
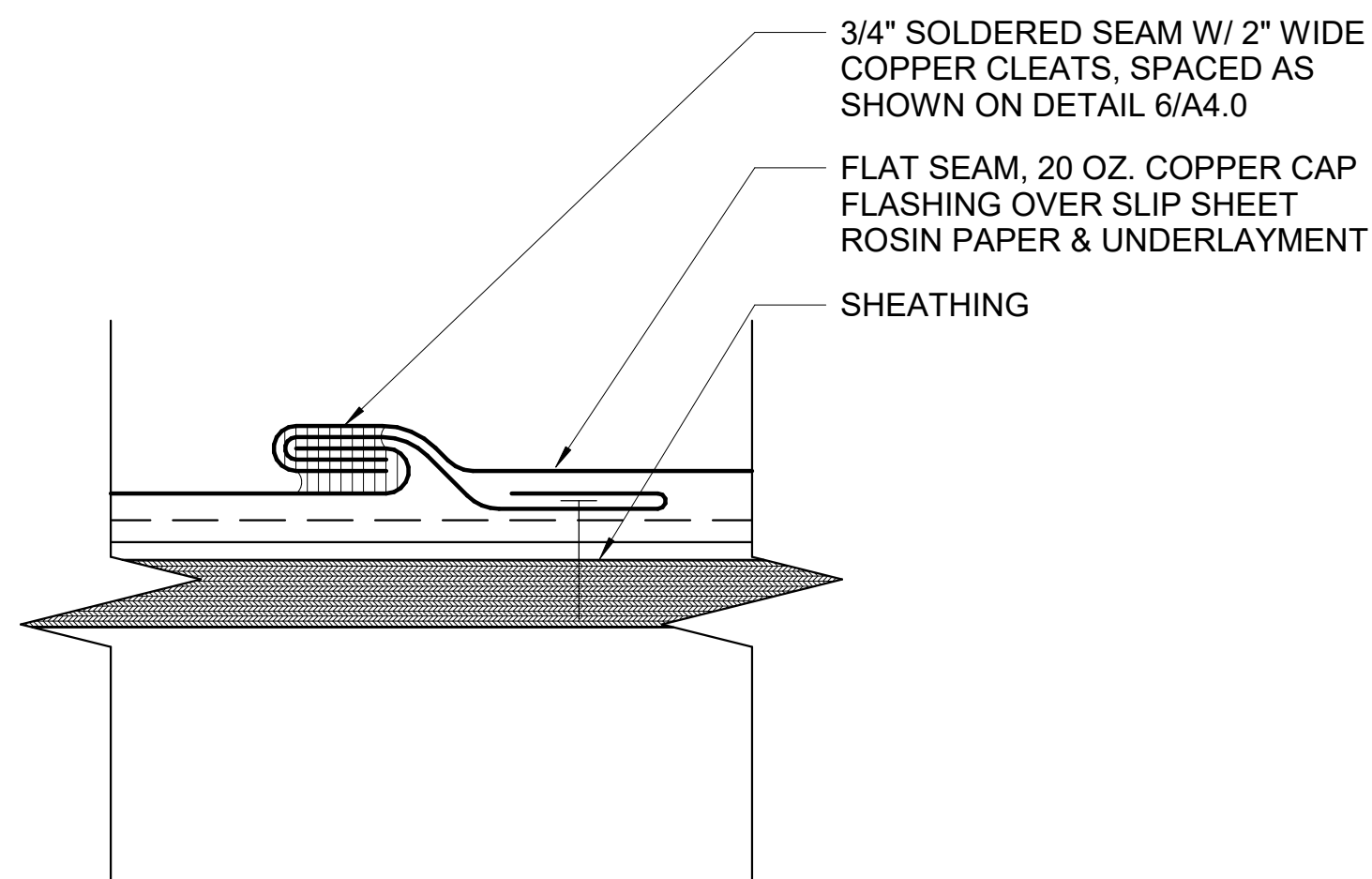


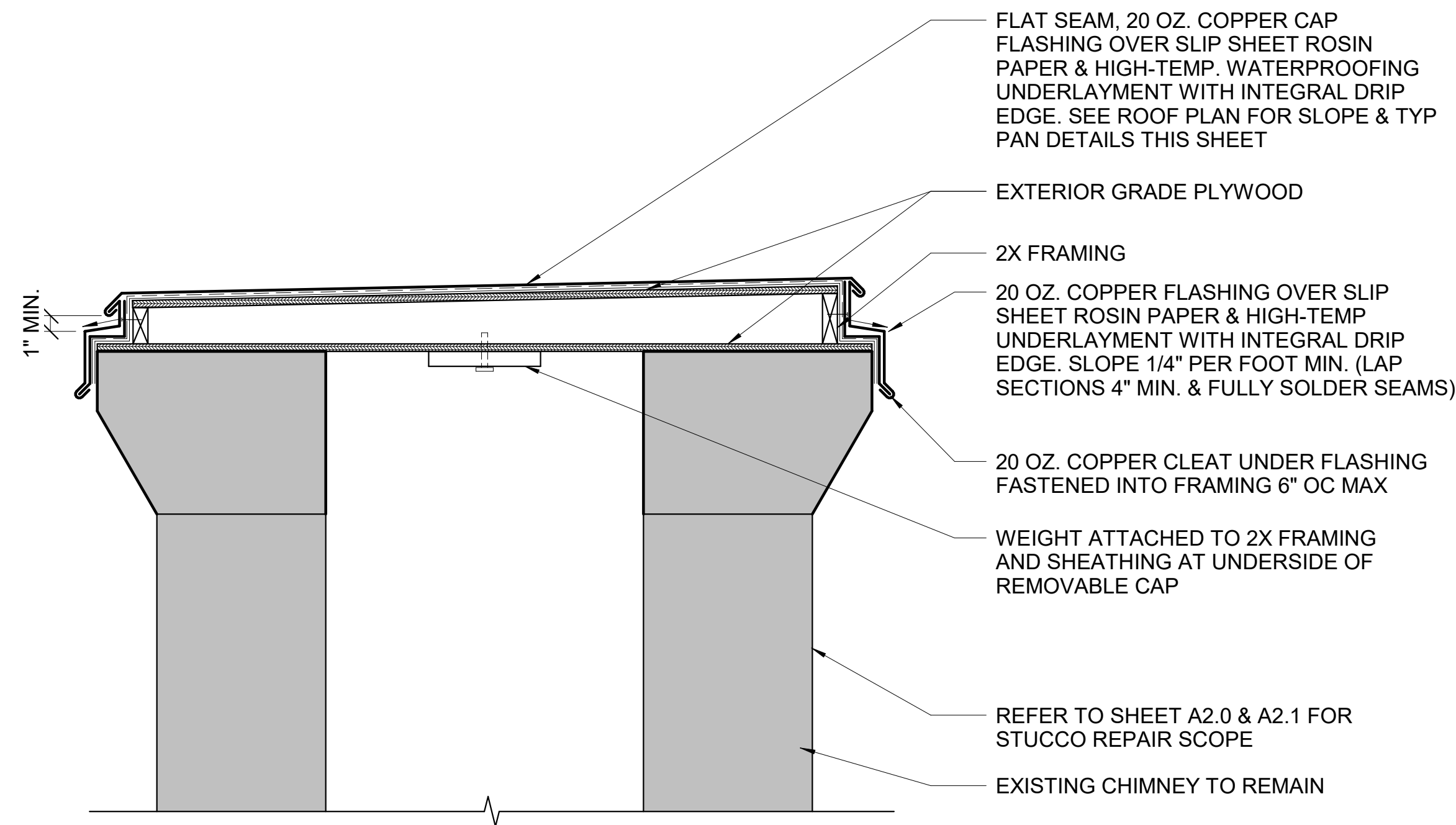
TYPICAL SHEET/PAN



TYPICAL FLAT SEAM COPPER ROOF, STAGGER TRANSVERSE SEAMS, LONGITUDINAL SEAMS ARE CONTINUOUS, INSTALL PANS SO WATER SHEDS TO UNDERLYING PAN

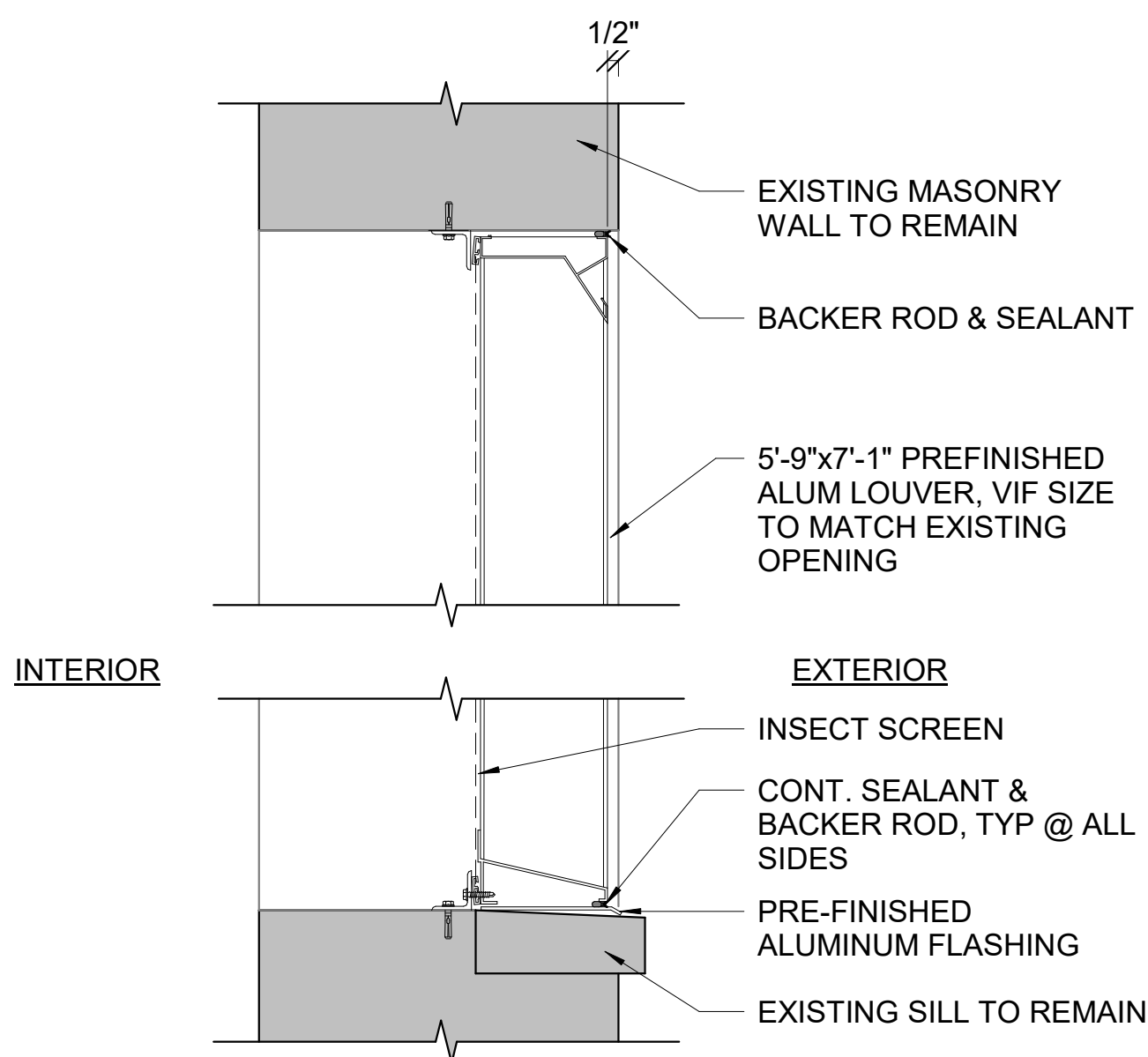


5 COPPER FLAT SEAM  
A4.0 6" = 1'-0" REFERRED FROM: A1.4

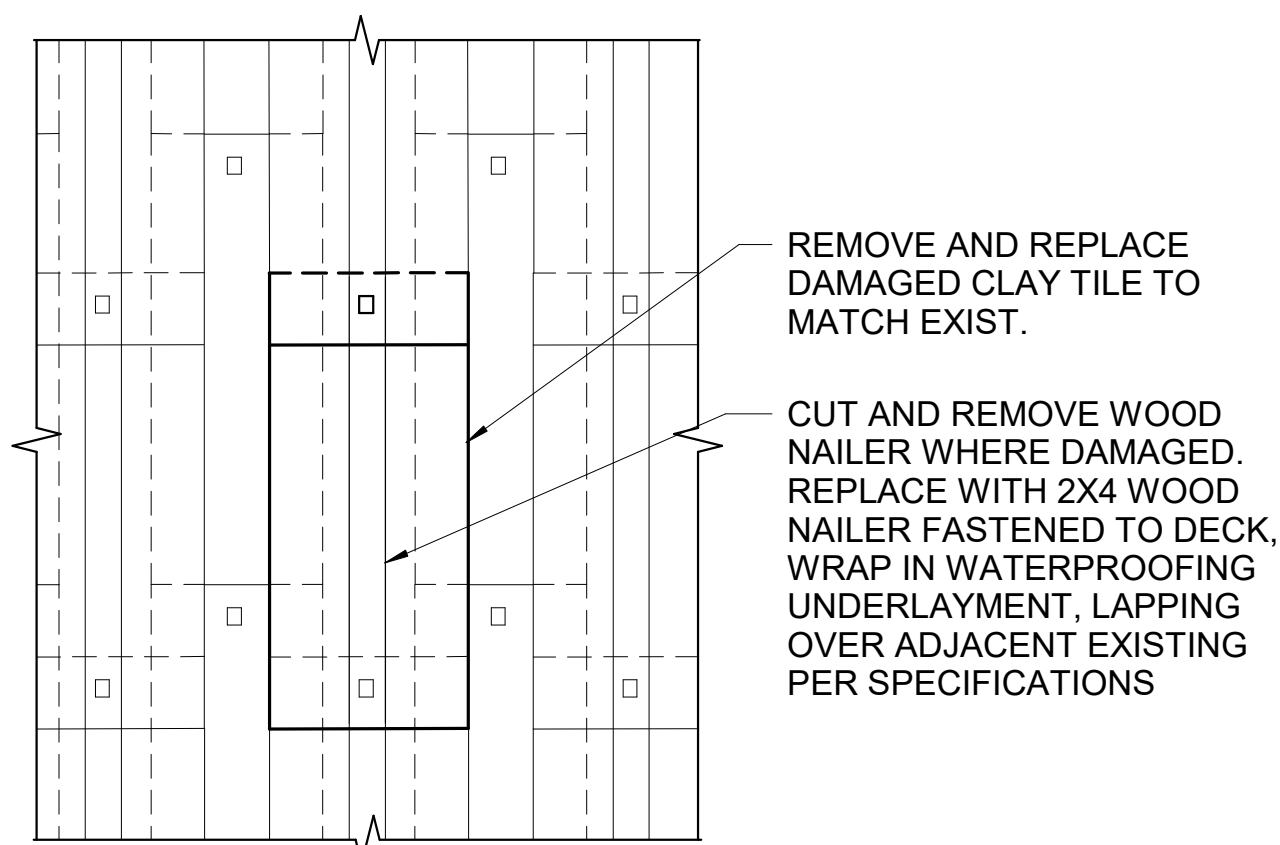


4 CHIMNEY METAL CAP SECTION DETAIL  
A4.0 1" = 1'-0" REFERRED FROM: A1.4

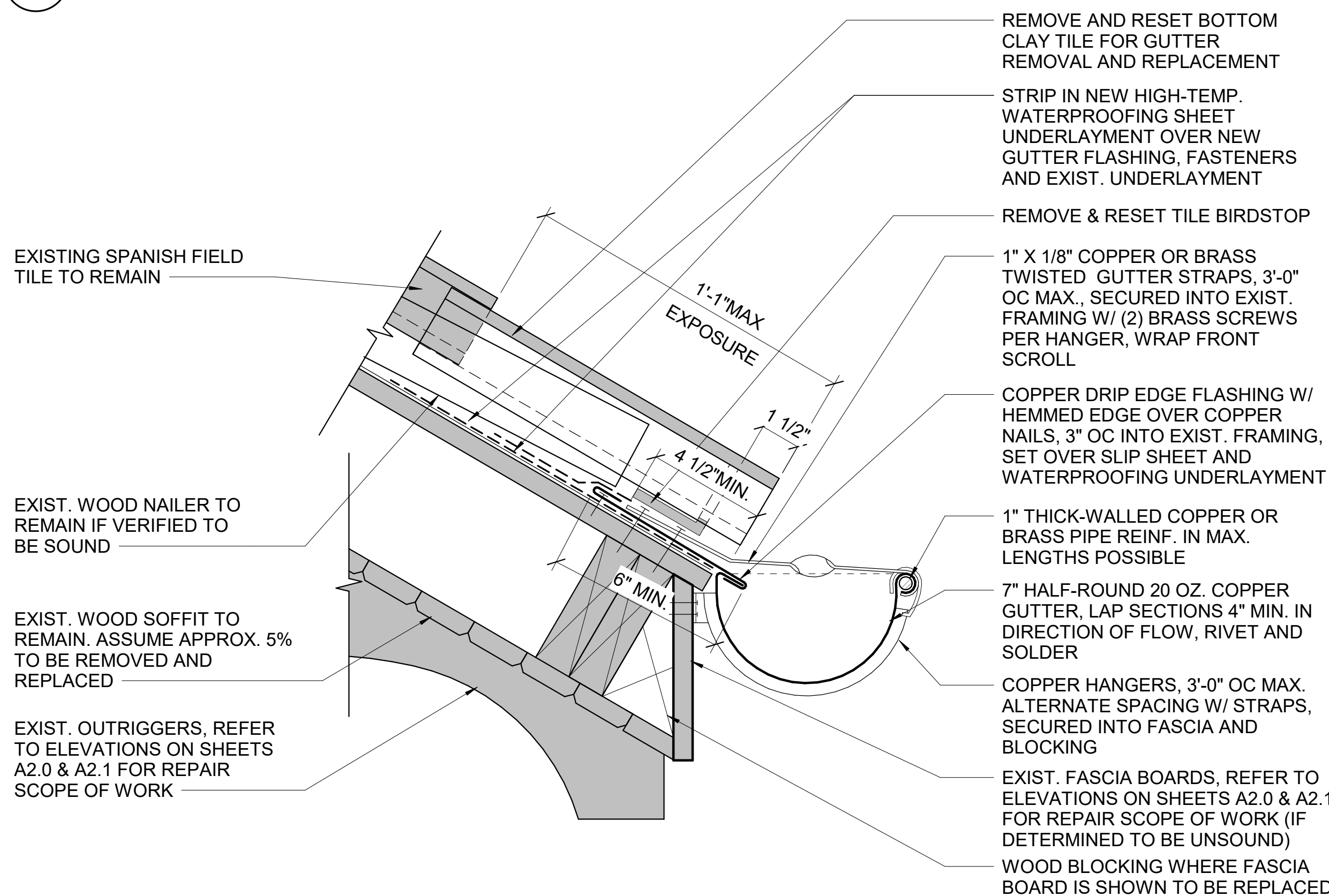
6 TYP. FLAT SEAM DETAILS  
A4.0 1" = 1'-0" REFERRED FROM:



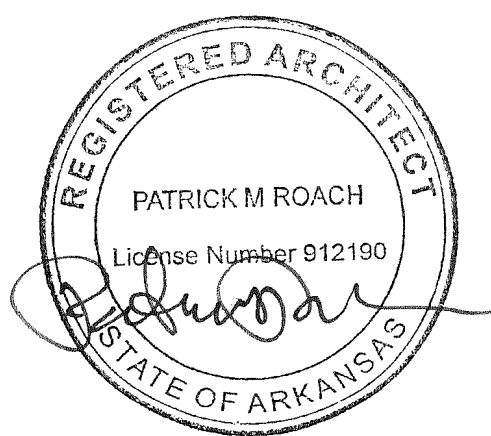
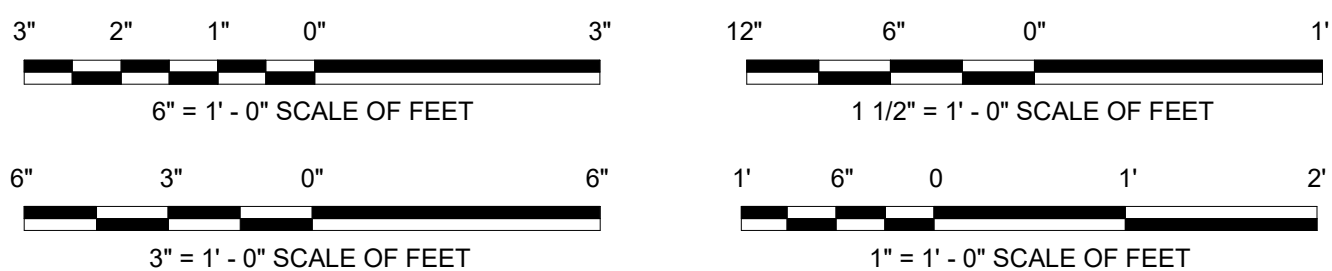
3 LOUVER SECTION DETAIL  
A4.0 1 1/2" = 1'-0"



2 MISC. CLAY FIELD TILE REPLACEMENT  
A4.0 1 1/2" = 1'-0" REFERRED FROM: A1.4



1 TYP. GUTTER REPLACEMENT DETAIL (VALLEY PAN FLASHING LOCATIONS SIM)  
A4.0 3" = 1'-0"



A/E FIRMS	DESIGNED: GK	SUB SHEET NO.	TITLE OF SHEET	DRAWING NO.
ARCH: QUINN EVANS 219 1/2 N. MAIN STREET ANN ARBOR, MI T: 734.663.5888	CADD: GK	02	LIBBEY BATHHOUSE	128
	TECH. REVIEW: KG	A4.0	EXTERIOR DETAILS	182951
	DATE: 10.27.2023		REHABILITATE BATHHOUSES HOT SPRINGS NATIONAL PARK	PMIS/PKG NO. 318915
				SHEET 211 OF 286