

KEYNOTES

- 09.10 INSTALL UNFINISHED GYPSUM BOARD COVERS OVER OPENINGS LEFT IN PLASTER WALL WHERE MECHANICAL GRILLES ARE REMOVED - COORDINATE WITH MECHANICAL
- 10.01 SURFACE MOUNTED FIRE EXTINGUISHER CABINET
- 10.02 EXISTING FIRE EXTINGUISHER TO REMAIN

NEW WORK PLAN LEGEND

EXISTING CONSTRUCTION TO REMAIN

CONCRETE

- CT-1 REMOVE DEBRIS, SOILS, AND BIOLOGICAL GROWTH FROM CONCRETE SLAB ON GRADE
- CT-2 APPROXIMATE AREA OF CONC. FLOOR SLAB TO BE INFILLED TO MATCH ADJACENT EXISTING. REFER TO STRUCTURAL FOR DETAILS.

STUCCO

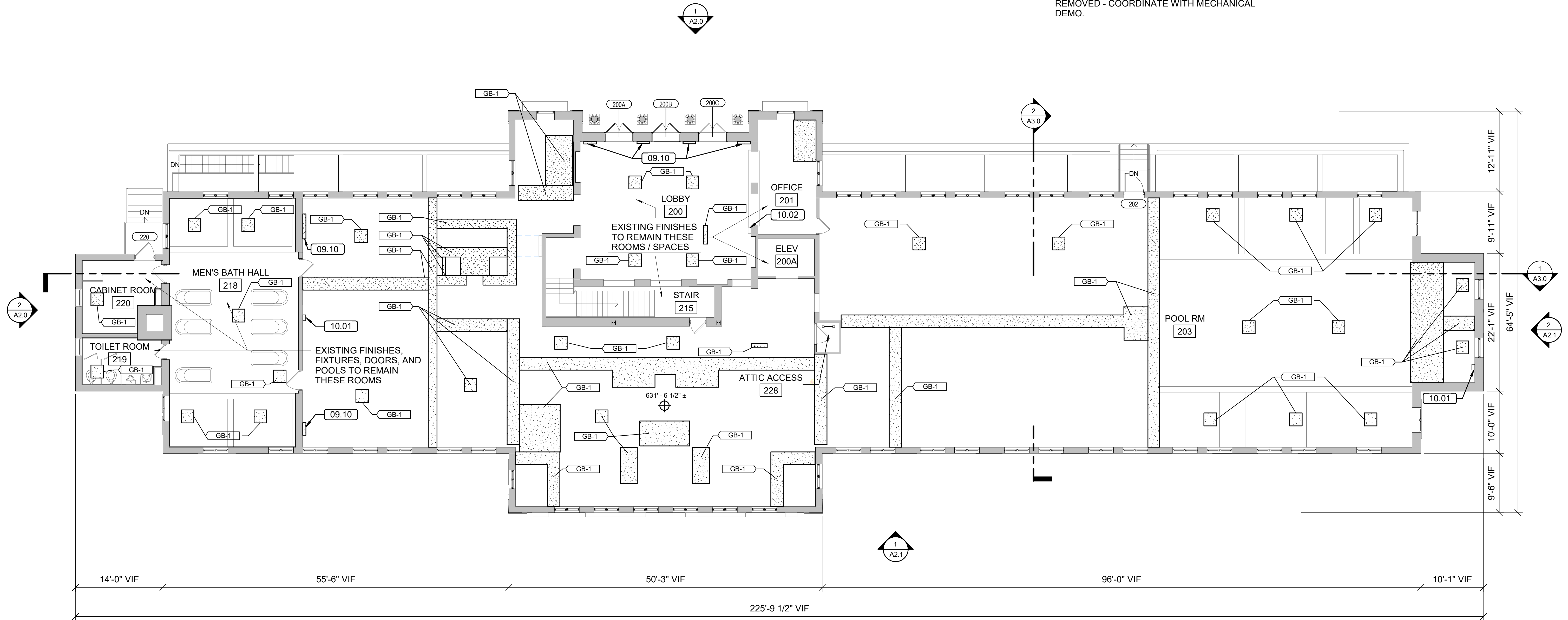
- ST-2 REMOVE / CLEAN BIOLOGICAL GROWTH FROM STUCCO.

GYPSUM BOARD

- GB-1 PROVIDE UNFINISHED GYPSUM BOARD COVERS OVER OPENINGS LEFT IN PLASTER CEILING WHERE OPENINGS EXIST, WALLS ARE BEING REMOVED, OR MECHANICAL DUCTWORK PENETRATIONS/INTAKES/EXHAUST GRILLES REMOVED - COORDINATE WITH MECHANICAL DEMO.

NEW WORK PLAN GENERAL NOTES

1. HISTORIC LOBBIES, MEN'S BATH, AND VERTICAL CIRCULATION TO REMAIN AS-IS.
2. PROTECT EXISTING CONSTRUCTION AND FINISHES TO REMAIN FROM DAMAGE IN AREAS IMMEDIATELY ADJACENT TO AREAS OF WORK. PATCH REPAIRS AS REQUIRED TO MATCH EXISTING.
3. BROOM CLEAN FLOORS THROUGH BUILDING, FOLLOWING ALL WORK.
4. ELEVATOR IS NOT OPERATIONAL. CONTRACTOR IS NOT TO OCCUPY, OPERATE, OR PLACE ANY MATERIALS IN THE ELEVATOR CAB OR HOISTWAY.



1 UPPER LEVEL PLAN
A1.2 1/8" = 1'-0"

8' 0' 8' 16'
1/8" = 1'-0" SCALE OF FEET



A/E FIRMS ARCH: QUINN EVANS 219 1/2 N. MAIN STREET ANN ARBOR, MI T: 734.663.5888	DESIGNED: GK CADD: GK TECH. REVIEW: KG DATE: 10.27.2023	SUB SHEET NO. 02 A1.2	TITLE OF SHEET LIBBEY BATHHOUSE UPPER LEVEL PLAN REHABILITATE BATHHOUSES HOT SPRINGS NATIONAL PARK	DRAWING NO. 128 182951 PMIS/PKG NO. 318915 SHEET 206 OF 286
--	--	---	---	---