

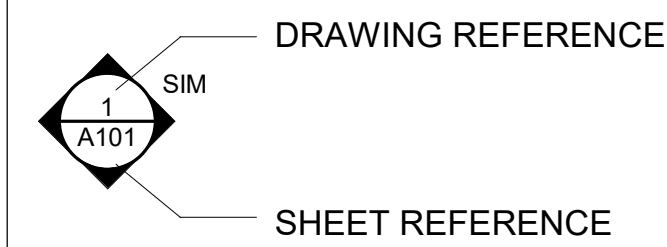
ABBREVIATIONS

A/C	AIR CONDITIONING	FD	FLOOR DRAIN	NIC	NOT IN CONTRACT
ABA	ARCHITECTURAL BARRIERS ACT	FDN	FOUNDATION	NO	NUMBER
ABT	ABOUT	FE	FIRE EXTINGUISHER	NOM	NOMINAL
ACCESS	ACCESSIBLE	FEC	FIRE EXTINGUISHER CABINET	NPS	NATIONAL PARK SERVICE
ACM	ASBESTOS CONTAINING MATERIAL	FF	FINISHED FACE	NTS	NOT TO SCALE
ACOUS	ACOUSTIC	FGL	FIBERGLASS		
ACP	ACOUSTICAL CEILING PANEL	FHC	FIRE HOSE CABINET	OC	ON CENTER
AD	AREA DRAIN	FIN(S)	FINISH(ES)	OD	OUTSIDE DIAMETER
ADA	AMERICANS WITH DISABILITIES ACT	FIXT	FIXTURE	OFF	OFFICE
ADJ	ADJUSTABLE	FL	FLOOR(ING)	OH	OVERHEAD
AFF	ABOVE FINISHED FLOOR	FLAM	FLAMMABLE	OPNG	OPENING
AGG	AGGREGATE	FLUOR	FLUORESCENT	OPP	OPPOSITE
ALT	ALTERNATE	FOS	FACE OF CONCRETE	OPP HD	OPPOSITE HAND
ALUM	ALUMINIUM	FOC	FACE OF STUDS		
APPROX	APPROXIMATELY	FP	FIREPROOF(ING)	PAR	PARALLEL
ARCH	ARCHITECT(URAL, URE)	FR	FRAME(D,ING)	PART	PARTITION
ASPH	ASPHALT(IC)	FT	FEET	PC	PRECAST
ASSOC	ASSOCIATED	FTG	FOOTING	PERF	PERFORATE(D)
AUTO	AUTOMATIC	FUR	FURR(ED,ING)	PL	PLATE
AWP	ACOUSTICAL WALL PANEL			PLAM	PLASTIC LAMINATE
		GA	GAUGE	PLAS	PLASTER
BD	BOARD	GALV	GALVANIZED	PLWD	PLYWOOD
BIT	BITUMINOUS, BITUMEN	GB	GRAB BAR	PNL	PANEL(ED)
BLDG	BUILDING	GC	GENERAL CONTRACT(OR)	PR	PAIR
BLKG	BLOCKING	GL	GLASS, GLAZING	PREP	PREPARE (SURFACE)
BM	BEAM	GOVT	GOVERNMENT	PROV	PROVIDE
BOT	BOTTOM	GT	GROUT	PSF	POUNDS PER SQUARE FOOT
BS	BOTH SIDES	GWB	GYPSUM WALLBOARD	PSI	POUNDS PER SQUARE INCH
BTDN	BETWEEN			PT	POINT
		H	HIGH	PTD	PAINT(ED)
CAB	CABINET	HC	HOLLOW CORE	PVMT	PAVEMENT
CEM	CEMENT	HDR	HEADER		
CJ	CONTROL JOINT	HDWD	HARDWOOD	QTY	QUANTITY
CLG	CEILING	HDWR	HARDWARE		
CLO	CLOSET	HGT	HEIGHT	R	RADIUS, RISER
CLR	CLEAR(ANCE)	HM	HOLLOW METAL	RB	RUBBER BASE
CMU	CONCRETE MASONRY UNIT	HORIZ	HORIZONTAL	REF	REFERENCE
CO	CONTRACTING OFFICER	HP	HIGH POINT	REINF	REINFORCED
COL	COLUMN	HR	HOUR	REQ / REQS	REQUIREMENT(S)
COM	COMMUNICATIONS	HT	HEIGHT	REQD / REQD	REQUIRED
CONC	CONCRETE	HVAC	HEATING, VENTILATION & AIR CONDITIONING	RES	RESILIENT
COND	CONDITION			RET	RETAINING
CONFIG	CONFIGURATION	ID	INSIDE DIAMETER	REV	REVISION(S) / REVISE(D)
CONST	CONSTRUCTION	IN	INCH(ES)	RFG	ROOFING
CONT	CONTINUOUS	INCAN	INCANDESCENT	RH	RIGHT HAND
COORD	COORDINATE	INCL	INCLUDE(D,ING)	RL	RAIN LEADER
CORR	CORRIDOR	INSUL	INSULATION, INSULATED	RM	ROOM
CPT	CARPET(ED)	INT	INTERIOR	RO	ROUGH OPENING
CT	CERAMIC TILE			S	SOUTH, SEAL
CTR	CENTER	JAN	JANITOR	SC	SOLID CORE
		JT(S)	JOINT(S)	SCHED	SCHEDULE
D	DEEP	N	NORTH	SECT	SECTION
DEG	DEGREE			SF	SQUARE FEET
DF	DRINKING FOUNTAIN	KIT	KITCHEN	SHT	SHEET
DIAG	DIAGONAL			SIM	SIMILAR
DIAM	DIAMETER	LAM	LAMINATE(D)	SLL	SOUND / LIGHT LOCK
DIM	DIMENSION	LAV	LAVATORY	SPEC(S)	SPECIFICATION(S)
DIV	DIVISION	LBL	LABEL	SQ	SQUARE
DN	DOWN	LF	LINEAR FOOT	SS	STAINLESS STEEL
DR	DOOR	LH	LEFT HAND	ST	STAINLESS
DTL	DETAIL	LL	LIVE LOAD	STD	STANDARD
DWG(S)	DRAWING(S)	LP	LOW POINT	STL	STEEL
		LTG	LIGHTING	STN	STAIN
E	EAST	LTL	LINTEL	STO	STORAGE
E-P	EPOXY PAINT			STRUC	STRUCTURAL
EA	EACH	MAS	MASONRY	SUSP	SUSPENDED
EJ	EXPANSION JOINT	MATL	MATERIAL(S)	SYM	SYMMETRICAL
EL	ELEVATION (TOPO)	MAX	MAXIMUM	SYS	SYSTEM
ELEC	ELECTRICAL	MECH	MECHANICAL		
ELEV	ELEVATION (ARCH),ELEVATOR	MED	MEDIUM	T	TREAD
EMER	EMERGENCY	MEMB	MEMBRANE	T&G	TONGUE AND GROOVE
ENCL	ENCLOS(E,URE)	MFR	MANUFACTURE(R)	T.O.	TOP OF
EQ	EQUAL	MIN	MINIMUM	TECH	TECHNOLOGY
EQUIP	EQUIPMENT	MISC	MISCELLANEOUS	TEL	TELEPHONE
EST	ESTIMATE(D)	MO	MASONRY OPENING	TEMP	TEMPERED
EXH	EXHAUST	MTD	MOUNTED	THK	THICK(NESS)
EXIST	EXISTING	MTG	MOUNTING	THRESH	THRESHOLD
EXP	EXPOSED, EXPANSION	MTL	METAL	TOC	TOP OF CURB
EXT	EXTERIOR				
FA	FIRE ALARM	JC	JANITOR CLOSET		
FAS	FASTEN(ER)	NAT	NATURAL		

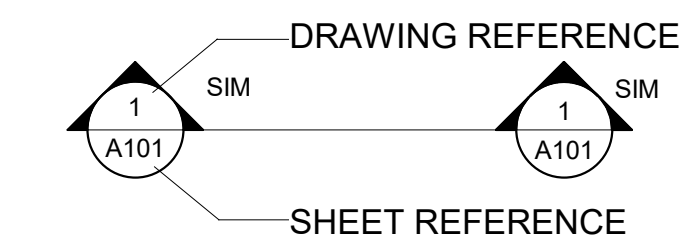
TOL	TOLERANCE	UL	UNDERWRITER'S LABORATORY
TOM	TOP OF MASONRY	UNFIN	UNFINISHED
TOS	TOP OF STEEL	UON	UNLESS OTHERWISE NOTED
TOW	TOP OF WALL		
TRANS	TRANSPARENT	VAR	VARIES
TV	TELEVISION	VCT	VINYL COMPOSITION TILE
TYP	TYPICAL	VERT	VERTICAL
		VEST	VESTIBULE
		VIF	VERIFY IN FIELD
		VU	VENTILATION UNIT
		VWC	VINYL WALLCOVERING
		W	WIDE, WEST
		W/	WITH
		W/O	WITHOUT
		WC	WATER CLOSET
		WD	WOOD
		WDW	WINDOW
		WH	WALL HUNG
		WP	WORK POINT
		WT	WEIGHT
		WWF	WELDED WIRE FABRIC
#	NUMBER		
&	AND		
+	EXIST (OR APPROX) DIM - VIF		
@	AT		
C	CENTER LINE		
L	ANGLE		

SYMBOLS

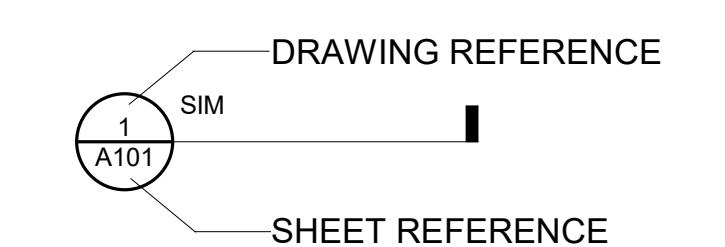
INTERIOR ELEVATION



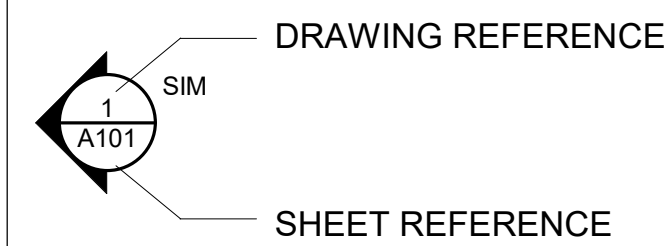
BLDG SECTION CUT



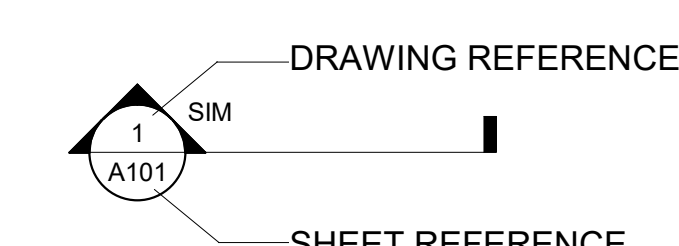
DETAIL CUT



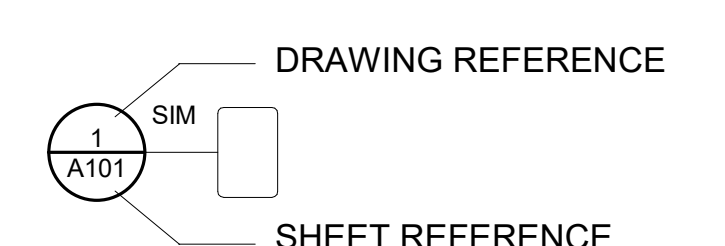
EXTERIOR ELEVATION



WALL SECTION CUT



DETAIL / PLAN



SYMBOLS

Room name	ROOM NUMBER		EXISTING ELEVATION		KEYNOTE
	FINISH TYPE		NEW ELEVATION		SCOPE DESIGNATION
	DOOR NUMBER	+	WORK POINT		REVISION CLOUD AND INDICATOR
	WALL TYPES		EXISTING COLUMN LINE		CONSTRUCTION ASSEMBLY
	WINDOW NUMBER		NEW COLUMN LINE	X/SHEET #	MATCHLINE
	LOUVER TAG			X/SHEET #	

CODE SUMMARY

APPLICABLE CODES AND STANDARDS

2021 INTERNATIONAL BUILDING CODE
 2021 INTERNATIONAL EXISTING BUILDING CODE - CHAPTER 12
 2021 INTERNATIONAL FIRE CODE
 2021 INTERNATIONAL PLUMBING CODE
 2021 INTERNATIONAL MECHANICAL CODE
 2021 INTERNATIONAL ENERGY CONSERVATION CODE
 NFPA 70 NEC 2023 - NATIONAL ELECTRICAL CODE
 NFPA 72 - NATIONAL FIRE ALARM CODE
 NFPA 90A - INSTALLATION OF AIR CONDITIONING AND VENTILATING SYSTEMS
 NFPA 13 - INSTALLATION OF STANDPIPES, PRIVATE HYDRANTS AND HOSE SYSTEMS
 ASHRAE 90.1 2016 - ENERGY STANDARD FOR BUILDINGS
 2021 ICC/ANSI 117.1 STANDARDS
 ARCHITECTURAL BARRIERS ACT ACCESSIBILITY STANDARDS (ABAAS)

ACTUAL BUILDING AREA

FIRST FLOOR: 10,040 GSF
 SECOND FLOOR: 10,030 GSF

TOTAL: 20,070 GSF

TYPE OF CONSTRUCTION

TYPE II-B, UNSPRINKLED
 REINFORCED CONCRETE STRUCTURE (FLOORS, BEAMS, COLUMNS)
 EXTERIOR NON-STRUCTURAL MASONRY WALL INFILL AND STUCCO FINISH
 WIRE MESH PLASTER CEILING AT SECOND FLOOR
 STEEL ROOF FRAMING WITH PLASTER INFILL AND CLAY TILE ROOFING

BUILDING HEIGHT

EXISTING (NON-SPRINKLERED): ALLOWED 55 FEET AND 2 STORIES
 NO CHANGES TO THE BUILDING HEIGHT

OCCUPANCY CLASSIFICATION

EXISTING USE GROUP A-3 INDOOR SWIMMING POOLS (WITHOUT SPECTATOR SEATING) / GROUP B BUSINESS
 - FIRST FLOOR: A3 (INDOOR SWIMMING POOLS (WITHOUT SPECTATOR SEATING)) AND B (OFFICES)
 - SECOND FLOOR: B (LOBBY, SPA)

PROPOSED USE: UNOCCUPIED

SUMMARY OF WORK

THE LIBBEY BATHHOUSE PROJECT TO BE STABILIZED FOR MOTHBALLING PURPOSES, INCLUDING MINOR REPAIRS TO EXISTING MATERIALS, INCLUSION OF NEW HVAC, UTILITY CONNECTIONS, AND ELECTRICAL UPGRADES.

ALTERATIONS

HISTORIC BUILDING, IEBC CHAPTER 12

ALTERATION LEVEL 1, IEBC CHAPTER 7

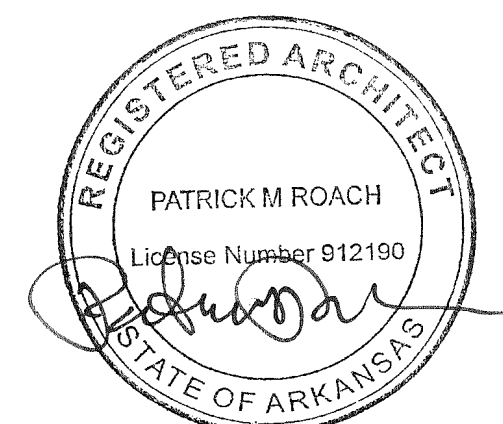
REMOVAL OF EXISTING NON-HISTORIC PARTITIONS

FIRE SPRINKLER

NO SPRINKLERS AND NOT REQUIRED PER IEBC 1011.2.1

FIRE ALARMS

NO FIRE ALARM PULL STATIONS AND NOTIFICATIONS IN BUILDING
 PROPOSED TO ADD FIRE ALARM PULL STATIONS AND NOTIFICATIONS



A/E FIRMS	DESIGNED: GK	SUB SHEET NO.	TITLE OF SHEET	DRAWING NO.
ARCH: QUINN EVANS 219 1/2 N. MAIN STREET ANN ARBOR, MI T: 734.663.5888	CADD: GK	02 A0.1	LIBBEY BATHHOUSE SYMBOLS AND ABBREVIATIONS, AND CODE SUMMARY REHABILITATE BATHHOUSES HOT SPRINGS NATIONAL PARK	128 182951
	TECH. REVIEW: KG			PMIS/PKG NO. 318915
	DATE: 10.27.2023			SHEET 201 OF 286