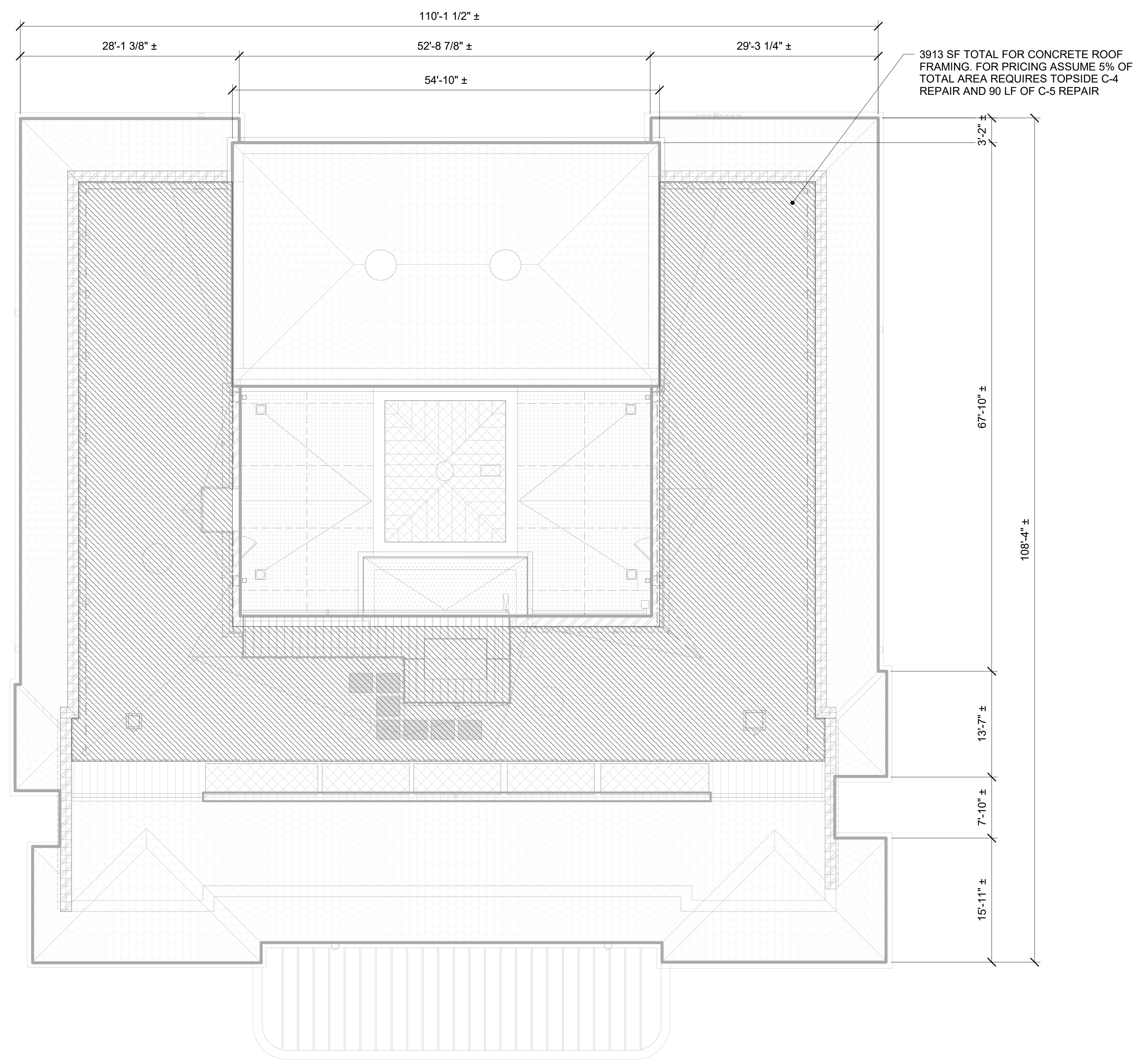


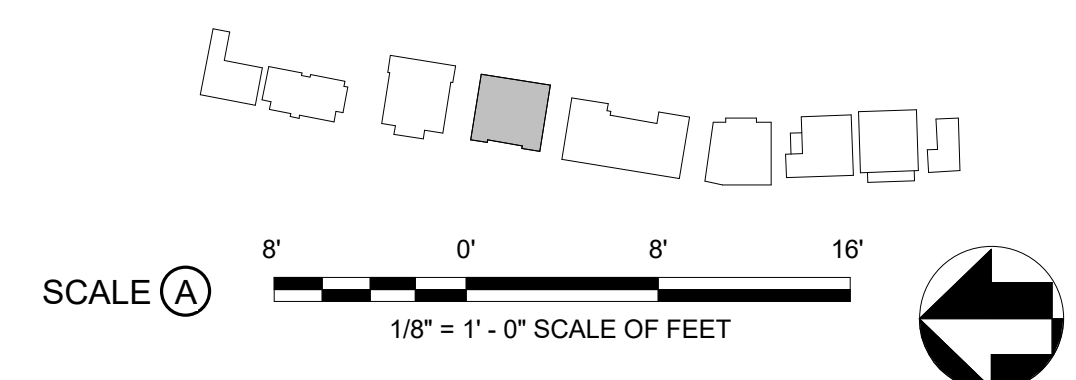
## GENERAL SHEET NOTES

1. QUANTITY DENOTES SQUARE FOOTAGE (SF) OR LINEAR FOOTAGE (LF) OF REPAIR UPON REPAIR TYPE. SEE REPAIR QUANTITIES ON S5.1 FOR TOTAL REPAIR AMOUNTS.
2. CONTRACTOR SHALL VERIFY ALL CONDITIONS IN FIELD AND SHALL EXPOSE REPAIR AREAS DOWN TO SOUND CONCRETE PRIOR TO REPAIR INSTALLATION.
3. CONTRACTOR SHALL COORDINATE REPAIR WORK WITH MEANS AND METHODS AND SEQUENCE OF OTHER RENOVATION WORK/TRADES.
4. ROOF FRAMING REPAIRS INDICATED ON PLAN ARE INTENDED TO BE TOPSIDE REPAIRS.
5. CONTRACTOR TO VERIFY FIELD CONDITIONS AS ASSUMED PER CONTRACT DOCUMENTS. NOTIFY CONTRACTING OFFICER IMMEDIATELY WITH ANY DISCREPANCIES. CONTRACTOR TO REVIEW TO OCCUR PRIOR TO REPAIR WORK.
6. VERIFY ALL DIMENSIONS IN FIELD. COORDINATE ALL DIMENSIONS WITH ARCHITECT, CIVIL, MEP, AND OTHER PRIME CONTRACTORS.
7. UNIT PRICING SHALL BE PROVIDED FOR EACH REPAIR TYPE AND FINAL QUANTITIES RECONCILED WITH TABLE OF S5.1. CONTRACTOR SHALL REVIEW GENERAL EXTENTS AND QUANTITIES OF REPAIRS WITH CONTRACTOR IN THE FIELD PRIOR TO REPAIR.

MASTER KEYNOTE LIST FOR REPAIRS	
KEY VALUE	REPAIR DESCRIPTION
C-4	SPALL, DELAMINATION, OR INADEQUATE COVER AT CONCRETE SLAB/WALL. REFER TO DETAILS 1, 2, & 3 ON S5.2 FOR EXPOSURE AND CONDITION OF STEEL REINFORCEMENT.
C-5	CRACK REPAIR, SEE 4 & 5 ON S5.2 BASED ON CRACK SIZE.



**1** ROOF REPAIR PLAN  
S1.1 1/8" = 1'-0" SCALE (A)



A/E FIRMS ARCH: QUINN EVANS 219 1/2 N. MAIN STREET ANN ARBOR, MI T: 734.663.5888 ENG: SIMAN 211 N 4TH AVE. ANN ARBOR, MI T: 734.800.2460	DESIGNED: KH CADD: CM TECH. REVIEW: NH DATE: 10.27.2023	SUB SHEET NO. <b>04</b> <b>S1.1</b>	TITLE OF SHEET HOSP BUCKSTAFF + FORDYCE ROOFS <b>ROOF REPAIR PLAN</b>  REHABILITATE BATHHOUSES HOT SPRINGS NATIONAL PARK	DRAWING NO. <b>128</b> <b>182951</b> PMIS/PKG NO. 318915 SHEET 280 OF 286
--	--	---	---	---

10/24/2023 3:05:28 PM