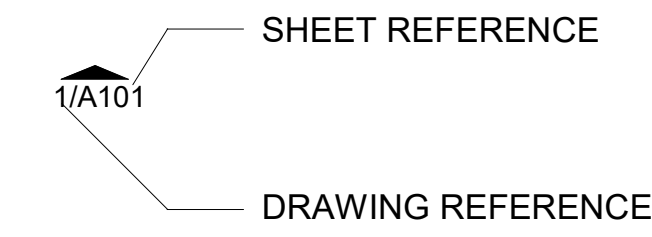


ABBREVIATIONS

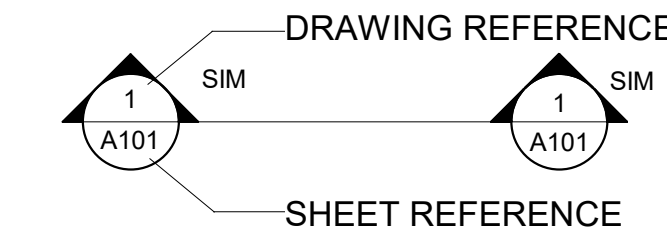
A/C	AIR CONDITIONING	FD	FLOOR DRAIN	NIC	NOT IN CONTRACT	TOC	TOP OF CURB
ABA	ARCHITECTURAL BARRIERS ACT	FDN	FOUNDATION	NO	NUMBER	TOL	TOLERANCE
ABT	ABOUT	FE	FIRE EXTINGUISHER	NOM	NOMINAL	TOM	TOP OF MASONRY
ACCESS	ACCESSIBLE	FEC	FIRE EXTINGUISHER CABINET	NPS	NATIONAL PARK SERVICE	TOS	TOP OF STEEL
ACM	ASBESTOS CONTAINING MATERIAL	FF	FINISHED FACE	NTS	NOT TO SCALE	TOW	TOP OF WALL
ACOUS	ACOUSTIC	FGL	FIBERGLASS	OC	ON CENTER	TRANS	TRANSPARENT
ACP	ACOUSTICAL CEILING PANEL	FHC	FIRE HOSE CABINET	OD	OUTSIDE DIAMETER	TV	TELEVISION
AD	AREA DRAIN	FIN(S)	FINISH(ES)	OFF	OFFICE	TYP	TYPICAL
ADA	AMERICANS WITH DISABILITIES ACT	FIXT	FIXTURE	OH	OVERHEAD	UL	UNDERWRITER'S LABORATORY
ADJ	ADJUSTABLE	FL	FLOOR(ING)	OPNG	OPENING	UNFIN	UNFINISHED
AFF	ABOVE FINISHED FLOOR	FLAM	FLAMMABLE	OPP	OPPOSITE	UON	UNLESS OTHERWISE NOTED
AGG	AGGREGATE	FLUOR	FLUORESCENT	OPP HD	OPPOSITE HAND	VAR	VARIES
ALT	ALTERNATE	FOC	FACE OF CONCRETE	PAR	PARALLEL	VCT	VINYL COMPOSITION TILE
ALUM	ALUMINIUM	FOS	FACE OF STUDS	PART	PARTITION	VERT	VERTICAL
APPROX	APPROXIMATELY	FP	FIREPROOF(ING)	PC	PRECAST	VEST	VESTIBULE
ARCH	ARCHITECT(URAL, URE)	FR	FRAME(D,ING)	PERF	PERFORATE(D)	VIF	VERIFY IN FIELD
ASPH	ASPHALT(IC)	FT	FEET	PL	PLATE	VU	VENTILATION UNIT
ASSOC	ASSOCIATED	FTG	FOOTING	PLAM	PLASTIC LAMINATE	VWC	VINYL WALLCOVERING
AUTO	AUTOMATIC	FUR	FURR(ED,ING)	PLAS	PLASTER	W	WIDE, WEST
AWP	ACOUSTICAL WALL PANEL	GA	GAUGE	PLWD	PLYWOOD	W/	WITH
BD	BOARD	GALV	GALVANIZED	PNL	PANEL(ED)	W/O	WITHOUT
BIT	BITUMINOUS, BITUMEN	GB	GRAB BAR	PR	PAIR	WC	WATER CLOSET
BLDG	BUILDING	GC	GENERAL CONTRACT(OR)	PREP	PREPARE (SURFACE)	WD	WOOD
BLKG	BLOCKING	GL	GLASS, GLAZING	PROV	PROVIDE	WDW	WINDOW
BM	BEAM	GOVT	GOVERNMENT	PSF	POUNDS PER SQUARE FOOT	WH	WALL HUNG
BOT	BOTTOM	GT	GROUT	PSI	POUNDS PER SQUARE INCH	WP	WORK POINT
BS	BOTH SIDES	GWB	GYPSPUM WALLBOARD	PT	POINT	WT	WEIGHT
BTWN	BETWEEN	H	HIGH	PTD	PAINT(ED)	WWF	WELDED WIRE FABRIC
CAB	CABINET	HC	HOLLOW CORE	PVMT	PAVEMENT	#	NUMBER
CEM	CEMENT	HDR	HEADER	QTY	QUANTITY	&	AND
CJ	CONTROL JOINT	HDWD	HARDWOOD	R	RADIUS, RISER	+	EXIST (OR APPROX) DIM - VIF
CLG	CEILING	HDWR	HARDWARE	RB	RUBBER BASE	@	AT
CLO	CLOSET	HGT	HEIGHT	REF	REFERENCE	C	CENTER LINE
CLR	CLEAR(ANCE)	HM	HOLLOW METAL	REINF	REINFORCED	L	ANGLE
CMU	CONCRETE MASONRY UNIT	HORIZ	HORIZONTAL	REQ / REQS	REQUIREMENT(S)		
CO	CONTRACTING OFFICER	HP	HIGH POINT	REQD / REQ'D	REQUIRED		
COL	COLUMN	HR	HOUR	RES	RESILIENT		
COM	COMMUNICATIONS	HT	HEIGHT	RET	RETAINING		
CONC	CONCRETE	HVAC	HEATING, VENTILATION & AIR CONDITIONING	REV	REVISION(S) / REVISE(D)		
COND	CONDITION	ID	INSIDE DIAMETER	RFG	ROOFING		
CONFIG	CONFIGURATION	IN	INCH(ES)	RH	RIGHT HAND		
CONST	CONSTRUCTION	INCL	INCLUDE(D,ING)	RL	RAIN LEADER		
CONT	CONTINUOUS	INCAN	INCANDESCENT	RM	ROOM		
COORD	COORDINATE	INSUL	INSULATION, INSULATED	RO	ROUGH OPENING		
CORR	CORRIDOR	INT	INTERIOR	S	SOUTH, SEAL		
CPT	CARPET(ED)	JAN	JANITOR	SC	SOLID CORE		
CT	CERAMIC TILE	JT(S)	JOINT(S)	SCHED	SCHEDULE		
CTR	CENTER	N	NORTH	SCP	SCUPPER		
D	DEEP	KIT	KITCHEN	SECT	SECTION		
DEG	DEGREE	LAM	LAMINATE(D)	SF	SQUARE FEET		
DF	DRINKING FOUNTAIN	LAV	LAVATORY	SHT	SHEET		
DIAG	DIAGONAL	LBL	LABEL	SIM	SIMILAR		
DIAM	DIAMETER	LF	LINEAR FOOT	SLL	SOUND / LIGHT LOCK		
DIM	DIMENSION	LH	LEFT HAND	SPEC(S)	SPECIFICATION(S)		
DIV	DIVISION	LL	LIVE LOAD	SQ	SQUARE		
DN	DOWN	LP	LOW POINT	SS	STAINLESS STEEL		
DR	DOOR	LTG	LIGHTING	ST	STAINLESS		
DTL	DETAIL	LTL	LINTEL	STD	STANDARD		
DWG(S)	DRAWING(S)	MAS	MASONRY	STL	STEEL		
E	EAST	MATL	MATERIAL(S)	STN	STAIN		
E-P	EPOXY PAINT	MAX	MAXIMUM	STO	STORAGE		
EA	EACH	MECH	MECHANICAL	STRUC	STRUCTURAL		
EJ	EXPANSION JOINT	MED	MEDIUM	SUSP	SUSPENDED		
EL	ELEVATION (TOPO)	MEMB	MEMBRANE	SYM	SYMMETRICAL		
ELEC	ELECTRICAL	MFR	MANUFACTURE(R)	SYS	SYSTEM		
ELEV	ELEVATION (ARCH),ELEVATOR	MIN	MINIMUM	T	TREAD		
EMER	EMERGENCY	MISC	MISCELLANEOUS	T&G	TONGUE AND GROOVE		
ENCL	ENCLOS(E,URE)	MO	MASONRY OPENING	T.O.	TOP OF		
EQ	EQUAL	MTD	MOUNTED	TECH	TECHNOLOGY		
EQUIP	EQUIPMENT	MTG	MOUNTING	TEL	TELEPHONE		
EST	ESTIMATE(D)	MTL	METAL	TEMP	TEMPERED		
EXH	EXHAUST	JC	JANITOR CLOSET	THK	THICK(NESS)		
EXIST	EXISTING	NAT	NATURAL	THRESH	THRESHOLD		
EXP	EXPOSED, EXPANSION						
EXT	EXTERIOR						
FA	FIRE ALARM						
FAS	FASTEN(ER)						

SYMBOLS

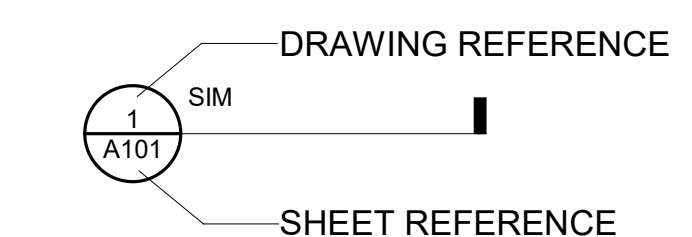
EXTERIOR ELEVATION



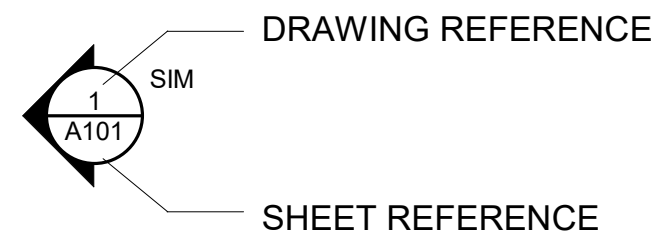
BLDG SECTION CUT



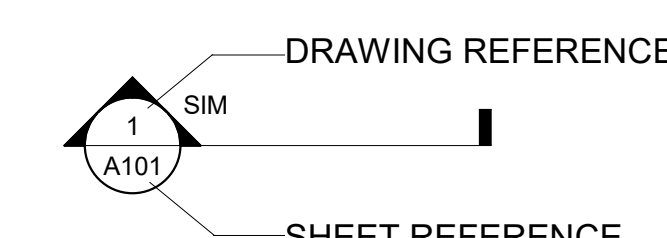
DETAIL CUT



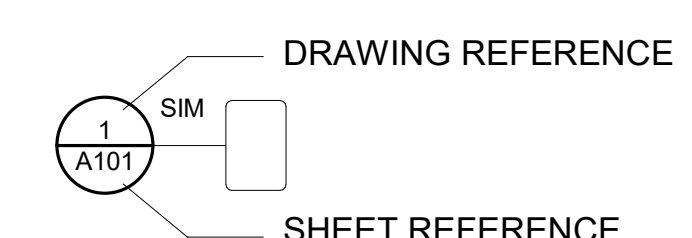
EXTERIOR ELEVATION



WALL SECTION CUT



DETAIL / PLAN



SYMBOLS

Room name	ROOM NUMBER	⊕	EXISTING ELEVATION	XX-XX	KEYNOTE
101	FINISH TYPE	⊕	NEW ELEVATION	xx	MATERIAL DESIGNATION (REFER TO MATERIALS SCHED.)
101	DOOR NUMBER	+	WORK POINT	☁	REVISION CLOUD AND INDICATOR
XX	WALL TYPES	⊕	EXISTING COLUMN LINE	XX	CONSTRUCTION ASSEMBLY
XX	WINDOW NUMBER	⊕	NEW COLUMN LINE	X/SHEET #	MATCHLINE
XX	LOUVER TAG			X/SHEET #	MATCHLINE

CODE SUMMARY

APPLICABLE CODES AND STANDARDS
 2021 INTERNATIONAL BUILDING CODE
 2021 INTERNATIONAL EXISTING BUILDING CODE - CHAPTER 12
 2021 INTERNATIONAL FIRE CODE
 2021 INTERNATIONAL PLUMBING CODE
 2021 INTERNATIONAL MECHANICAL CODE
 2021 INTERNATIONAL ENERGY CONSERVATION CODE
 NFPA 70 NEC - NATIONAL ELECTRICAL CODE
 NFPA 72 - NATIONAL FIRE ALARM CODE
 NFPA 90A - INSTALLATION OF AIR CONDITIONING AND VENTILATING SYSTEMS
 NFPA 13 - INSTALLATION OF STANDPIPES, PRIVATE HYDRANTS AND HOSE SYSTEMS
 ASHRAE 90.1 - ENERGY STANDARD FOR BUILDINGS
 2021 ICC/ANSI 117.1 STANDARDS
 ARCHITECTURAL BARRIERS ACT ACCESSIBILITY STANDARDS (ABAAS)

ACTUAL BUILDING AREA

BASEMENT: 10,000 GSF
 FIRST FLOOR: 10,000 GSF
 SECOND FLOOR: 7,700 GSF
 THIRD FLOOR: 7,700 GSF

TOTAL: 35,400 GSF

TYPE OF CONSTRUCTION

TYPE II-B, UNSPRINKLED
 REINFORCED CONCRETE STRUCTURE (FLOORS, ROOF, BEAMS, COLUMNS)
 EXTERIOR MASONRY WALL INFILL AND MASONRY FINISH

OCCUPANCY CLASSIFICATION

USE GROUP A-3 MUSEUM AND LOBBY / GROUP B BUSINESS
 - BASEMENT: B (MECHANICAL AND SUPPORT SPACES)
 - FIRST FLOOR: A3 (MUSEUM AND LOBBY)
 - SECOND FLOOR: A3 (MUSEUM AND LOBBY)
 - THIRD FLOOR: A3 (MUSEUM AND LOBBY)

SUMMARY OF WORK

THE FORDYCE BATHHOUSE PROJECT INCLUDES ROOF REPLACEMENT AND MINOR MASONRY REPAIRS TO UPPER EXTERIOR CLADDING AND COPING. THE TOTAL ROOF AREA IS 10,000 GSF, WITH THE TOTAL ROOF REPLACEMENT AREA BEING 4,200 GSF.

ALTERATIONS

HISTORIC BUILDING, IEBC CHAPTER 12

IEBC SECTION 1202: REPAIRS
 IEBC 1202.1 GENERAL: REPAIRS TO ANY PORTION OF A HISTORIC BUILDING OR STRUCTURE SHALL BE PERMITTED WITH ORIGINAL OR LIKE MATERIALS AND ORIGINAL METHODS OF CONSTRUCTION, SUBJECT TO THE PROVISIONS OF THIS CHAPTER. HAZARDOUS MATERIALS, SUCH AS ASBESTOS AND LEAD-BASED PAINT, SHALL NOT BE USED WHERE THE CODE FOR NEW CONSTRUCTION WOULD NOT PERMIT THEIR USE IN BUILDINGS OF SIMILAR OCCUPANCY, PURPOSE AND LOCATION.

IEBC 1202.2 REPLACEMENT: REPLACEMENT OF EXISTING OR MISSING FEATURES USING ORIGINAL MATERIALS SHALL BE PERMITTED. PARTIAL REPLACEMENT FOR REPAIRS THAT MATCH THE ORIGINAL IN CONFIGURATION, HEIGHT AND SIZE SHALL BE PERMITTED.

GENERAL PROJECT NOTES

- WORK INVOLVES RESTORATION WORK OF A HISTORIC BUILDING. TREAT THE BUILDING RESPECTFULLY. CAREFULLY RESPECT EXISTING CONSTRUCTION AND TREAT ALL EXISTING MATERIALS AS IRREPLACEABLE. DO NOT ALTER, REMOVE OR DISFIGURE ANY EXISTING MATERIALS, ELEMENTS OR FINISHED UNLESS INDICATED ON THE DRAWINGS OR IN THE SPECIFICATIONS, OR DIRECTED BY THE CONTRACTING OFFICER'S REPRESENTATIVE (COR).
- CONTRACTOR SHALL USE ALL REASONABLE AND CUSTOMARY CARE TO VERIFY ALL EXISTING CONDITIONS IN FIELD. CONTRACTOR SHALL NOTIFY THE CONTRACTING OFFICER IMMEDIATELY OF INCONSISTENCIES BETWEEN THE DRAWINGS AND ACTUAL CONDITIONS BEFORE PROCEEDING WITH CONSTRUCTION OR DEMOLITION. INFORMATION CONTAINED ON THESE DRAWINGS WITH REGARD TO EXISTING CONDITIONS OF CONSTRUCTION IS PROVIDED FOR THE CONVENIENCE OF THE CONTRACTOR IN EXECUTING THE WORK. THE INFORMATION ON THE DRAWINGS IS BASED ON LIMITED ACCESS TO THE EXISTING BUILDING EXTERIOR.
- ALL DIMENSIONS ARE BASED ON LIMITED FIELD VERIFICATION - CONTRACTOR TO VERIFY ALL DIMENSIONS IN FIELD.
- MATERIALS IDENTIFIED ON THE DRAWINGS ARE TO BE NEW AND PROVIDED BY THE CONTRACTOR UNLESS OTHERWISE NOTED.



A/E FIRMS ARCH: QUINN EVANS 219 1/2 N. MAIN STREET ANN ARBOR, MI T: 734.663.5888	DESIGNED: GK	SUB SHEET NO. 04 A0.1	TITLE OF SHEET HOSP BUCKSTAFF + FORDYCE ROOFS SYMBOLS AND ABBREVIATIONS OPTION 1 REHABILITATE BATHHOUSES HOT SPRINGS NATIONAL PARK	DRAWING NO. 128 182951
	CADD: GK			PMIS/PKG NO. 318915
	TECH. REVIEW: KG			SHEET 273 OF 286
	DATE: 10.27.2023			