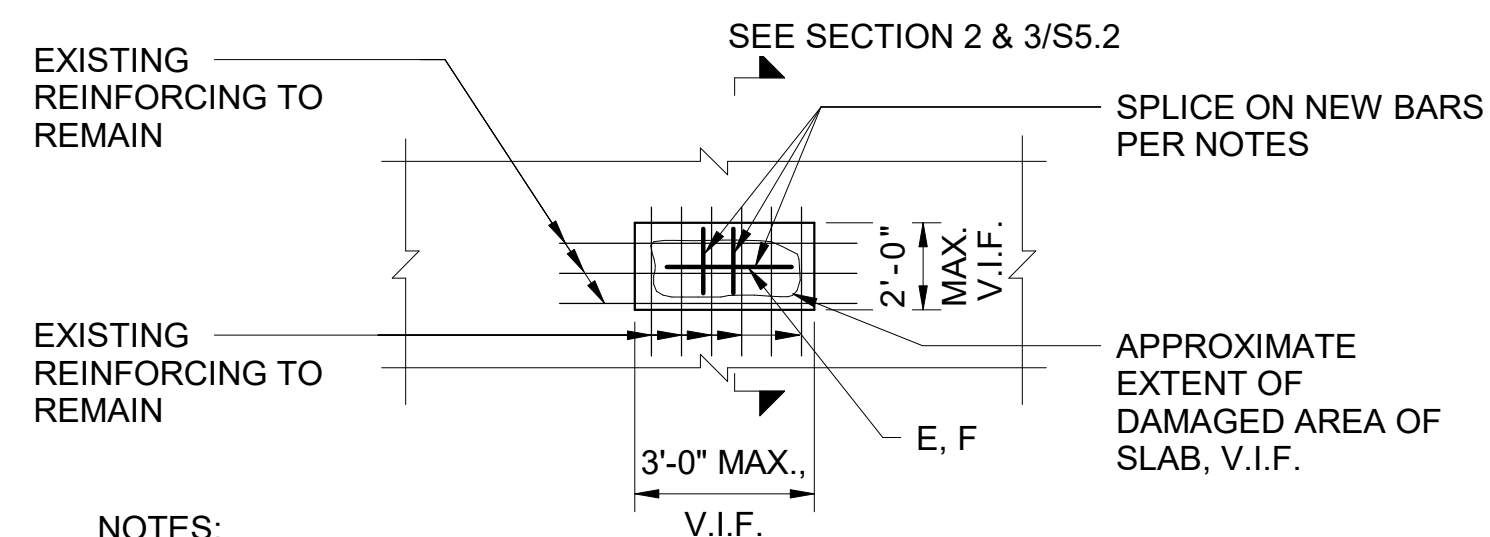


1
S5.2
TYPICAL DETAIL - BAR REINFORCED SLAB REPAIR
(KEYNOTE C-4)

NO SCALE



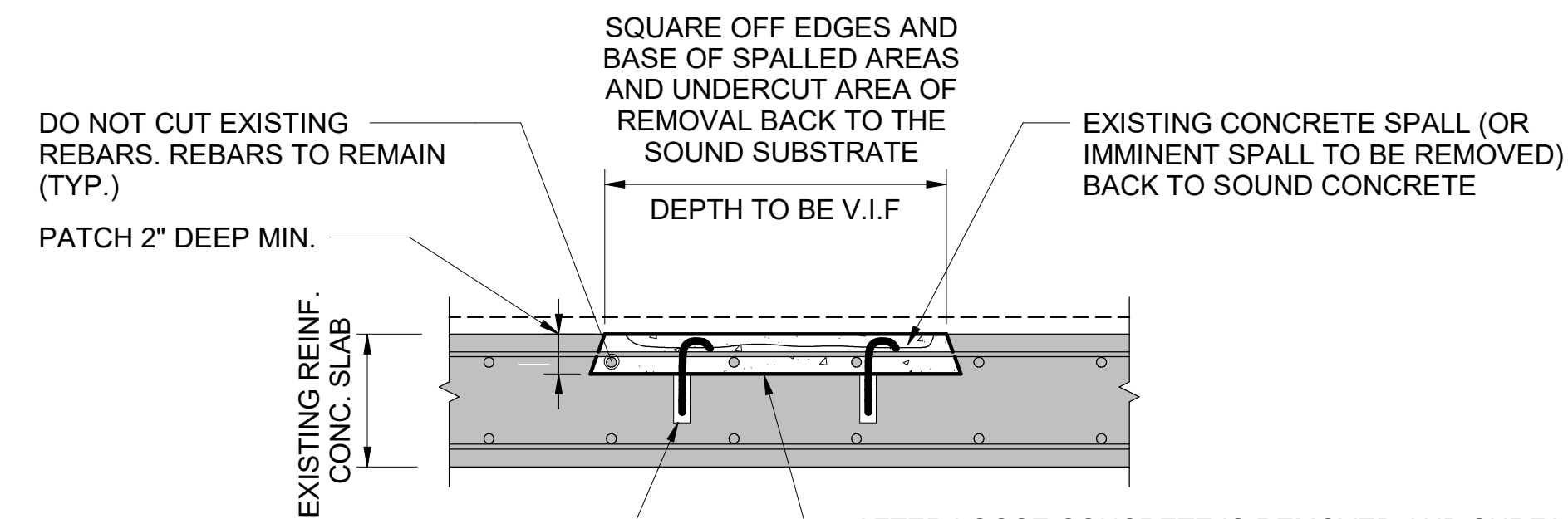
NOTES:

- ALPHABETICAL KEYNOTES IN REPAIR DETAIL CORRESPOND TO "NOTES - CONCRETE REPAIRS: NOTE #4 ENTITLED CONCRETE REPAIR SEQUENCE & CONSTRUCTION NOTES" ON S5.1.
- REFER TO DETAILS 2 & 3 ON S5.2. FOR ADDITIONAL REPAIR DIRECTIVES.
- REPAIR MAY BE USED ON TOP OR BOTTOM SURFACE OF SLAB AND WALLS. SEE NOTES FOR CONCRETE PATCHING MATERIALS FOR HORIZONTAL AND VERTICAL APPLICATIONS.

PLAN

REPAIR PROCEDURE:

- REMOVE LOOSE CONCRETE AND FOREIGN MATERIALS, ROUGHEN EXISTING CONCRETE SURFACES THAT ARE TO RECEIVE PATCH CONCRETE.
- REMOVE RUST, SCALE, OIL AND ANY OTHER FOREIGN MATERIALS FROM STEEL REINFORCING BARS.
- COAT EXISTING CONCRETE AND STEEL WITH ANTI-CORROSION AGENTS AS SPECIFIED BY MANUFACTURER.
- PREPARE AND APPLY PATCH CONCRETE PER MANUFACTURER'S SPECIFICATION. FOLLOW INSTRUCTIONS FOR LIFT LAYERS, ENVIRONMENT CONDITIONS, TOOLS, AND ALL OTHER PROCEDURES.



DO NOT CUT EXISTING REBARS. REBARS TO REMAIN (TYP.)
PATCH 2" DEEP MIN.
PROVIDE 1/4" DIAMETER STAINLESS STEEL HOOKED BARS, SET IN EPOXY GROUT 3" INTO EXISTING CONCRETE WALL. MINIMUM (2) HOOKS PER EVERY 1 SF OF SPALL AREA. OMISSION OF DOWELS ARE ACCEPTABLE GIVEN:
1. SPALL AREA IS LESS THAN 1 SF
2. IF PATCH IS UNDERCUTTING EXISTING REINFORCEMENT THAT IS AT LEAST 1'-0" O.C. IN EACH DIRECTION.

AFTER LOOSE CONCRETE IS REMOVED AND SURFACE IS PREPARED PER MANUFACTURER'S REQUIREMENTS, CLEAN EXISTING REINF AND COAT WITH ANTI-CORROSION AGENT PER SPECIFICATIONS, REPLACE VOID WITH CONCRETE PATCH MATERIAL*

*SEE SPECIFICATION SECTION 03 01 30 FOR REQUIRED CONCRETE PATCH/REPAIR MORTAR MATERIAL. CONTRACTOR SHALL SUBMIT SPECIFICATIONS OF ALL PRODUCTS TO THE CONTRACTING OFFICER PRIOR TO STAGING THE WORK.

2
S5.2
TYPICAL DETAIL CONCRETE SPALL PATCH REBAR EXPOSED BUT INTACT
(KEYNOTE C-4)

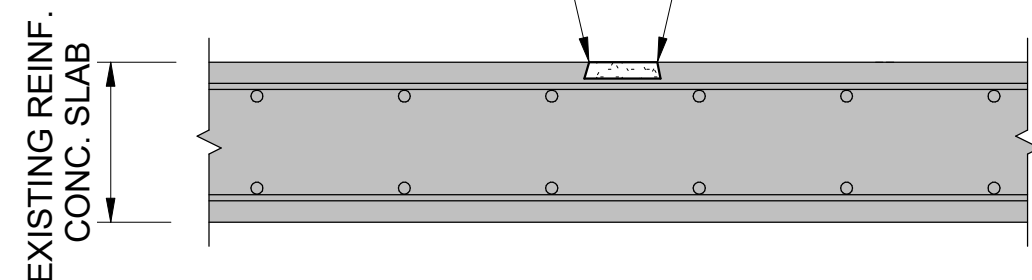
NO SCALE

REPAIR PROCEDURE:

- REMOVE LOOSE CONCRETE AND FOREIGN MATERIALS, ROUGHEN EXISTING CONCRETE SURFACES THAT ARE TO RECEIVE PATCH CONCRETE.
- PREPARE AND APPLY PATCH CONCRETE PER MANUFACTURER'S SPECIFICATION. FOLLOW INSTRUCTIONS FOR LIFT LAYERS, ENVIRONMENT CONDITIONS, TOOLS, AND ALL OTHER PROCEDURES.

SURFACE SPALL: REMOVE UNSOUND SURROUNDING CONCRETE. SQUARE OFF EDGES AND BASE OF SPALLED AREAS AND UNDERCUT AREA OF REMOVAL, CLEAN AND APPLY PATCH CONCRETE*

PATCH 2" DEEP MAX.
NOTE: DOWELS MAY BE REQUIRED IF SPALL AREA IS MORE THAN 1 SF; REFER TO DETAIL 2/S5.2



*SEE SPECIFICATION SECTION 03 01 30 FOR REQUIRED CONCRETE PATCH/REPAIR MORTAR MATERIAL. CONTRACTOR SHALL SUBMIT SPECIFICATIONS OF ALL PRODUCTS TO THE CONTRACTING OFFICER PRIOR TO STAGING THE WORK.

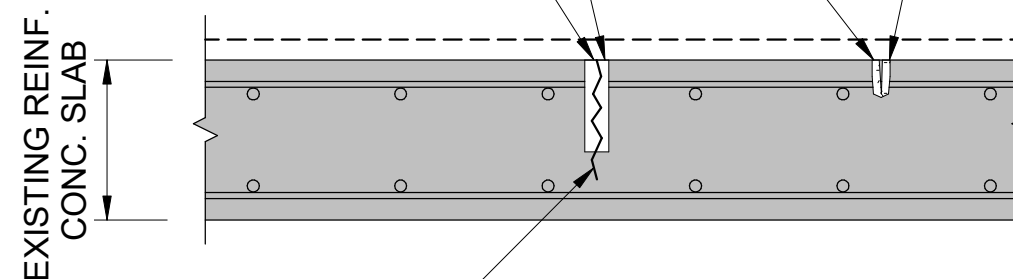
3
S5.2
TYPICAL DETAIL CONCRETE SPALL PATCH REBAR NOT EXPOSED
(KEYNOTE C-4)

NO SCALE

3/8" DIA. PLASTIC THREADED PORTS AT 2'-0" O.C. FOR INJECTION OF EPOXY GEL (ALT: USE FUNNELS OR BRUSHES FOR APPLYING EPOXY FILLER PER MANUFACTURERS' RECOMMENDATIONS.)

SOUND SURFACE CRACKS (CONCRETE DOES NOT SPALL OFF WITH MODERATE HAMMERING); ROUTE CRACK TO A MIN WIDTH OF 1/2" AND MIN. DEPTH OF 3/4", CLEAN AND INJECT WITH EPOXY GEL*

SOUND SURFACE CRACKS (CONCRETE SPALLS OFF WITH MODERATE HAMMERING): REMOVE UNSOUND CONCRETE, ROUTE CRACK TO A MIN WIDTH OF 1/2" AND MIN. DEPTH OF 3/4", CLEAN AND INJECT WITH EPOXY GEL*



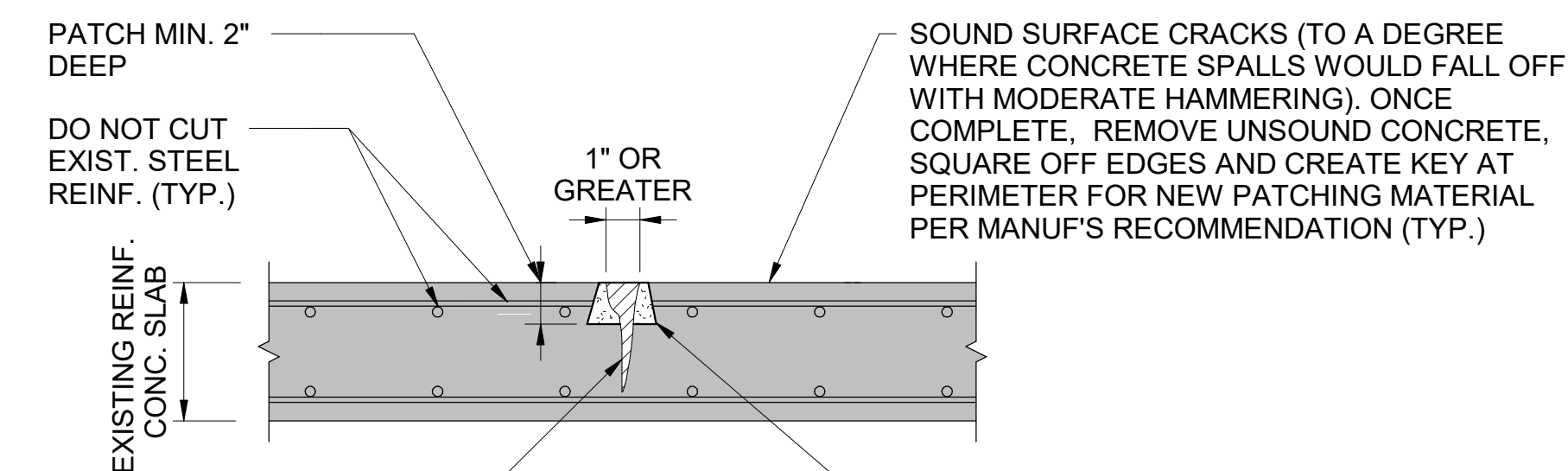
EXISTING SURFACE CRACK, SEE ELEVATION FOR APPROXIMATE LOCATIONS V.I.F. ACTUAL SIZE AND EXTENT

NOTE: FOR CRACKS SMALLER THAN 1/8" IN WIDTH/THICKNESS, NO REPAIR NECESSARY. FOR CRACKS LARGER THAN 1" IN WIDTH/THICKNESS, SEE DETAIL 5/S5.2

*EPOXY GEL SHALL BE SIKADUR 35 HI-MOD LV OR APPROVED EQUAL. CONTRACTOR SHALL SUBMIT SPECIFICATIONS OF ALL PRODUCTS TO THE CONTRACTING OFFICER PRIOR TO STAGING THE WORK.

4
S5.2
TYPICAL DETAIL CONCRETE CRACK REPAIR, SMALL (KEYNOTE C-5)

NO SCALE



INJECT EPOXY INTO REMAINING AREA OF CRACK (IF ANY) BEYOND AREA OF REMOVALS PER DETAIL 4/S5.2

AFTER LOOSE CONCRETE IS REMOVED DOWN TO SOUND MATERIAL PREP SURFACE, COAT AND PATCH VOID FOLLOWING DETAILS 1, 2, & 3/S5.2 AS APPLICABLE.

*EPOXY GEL SHALL BE SIKADUR 35 HI-MOD LV OR APPROVED EQUAL. CONTRACTOR SHALL SUBMIT SPECIFICATIONS OF ALL PRODUCTS TO THE CONTRACTING OFFICER PRIOR TO STAGING THE WORK.

5
S5.2
TYPICAL DETAIL CONCRETE CRACK REPAIR, LARGE (KEYNOTE C-5)

NO SCALE

A/E FIRMS	DESIGNED:	SUB SHEET NO.	TITLE OF SHEET	DRAWING NO.
ARCH: QUINN EVANS 219 1/2 N. MAIN STREET ANN ARBOR, MI T: 734.663.5888	KH	03 S5.2	HOSP BUCKSTAFF + FORDYCE ROOFS TYPICAL CONCRETE REPAIR DETAILS	128 182951
ENG: SILMAN 211 14TH AVE. ANN ARBOR, MI T: 734.800.2460	CM			PMIS/PKG NO. 318915
	TECH. REVIEW: NH		REHABILITATE BATHHOUSES HOT SPRINGS NATIONAL PARK	266 OF 286
	DATE: 10.27.2023			

