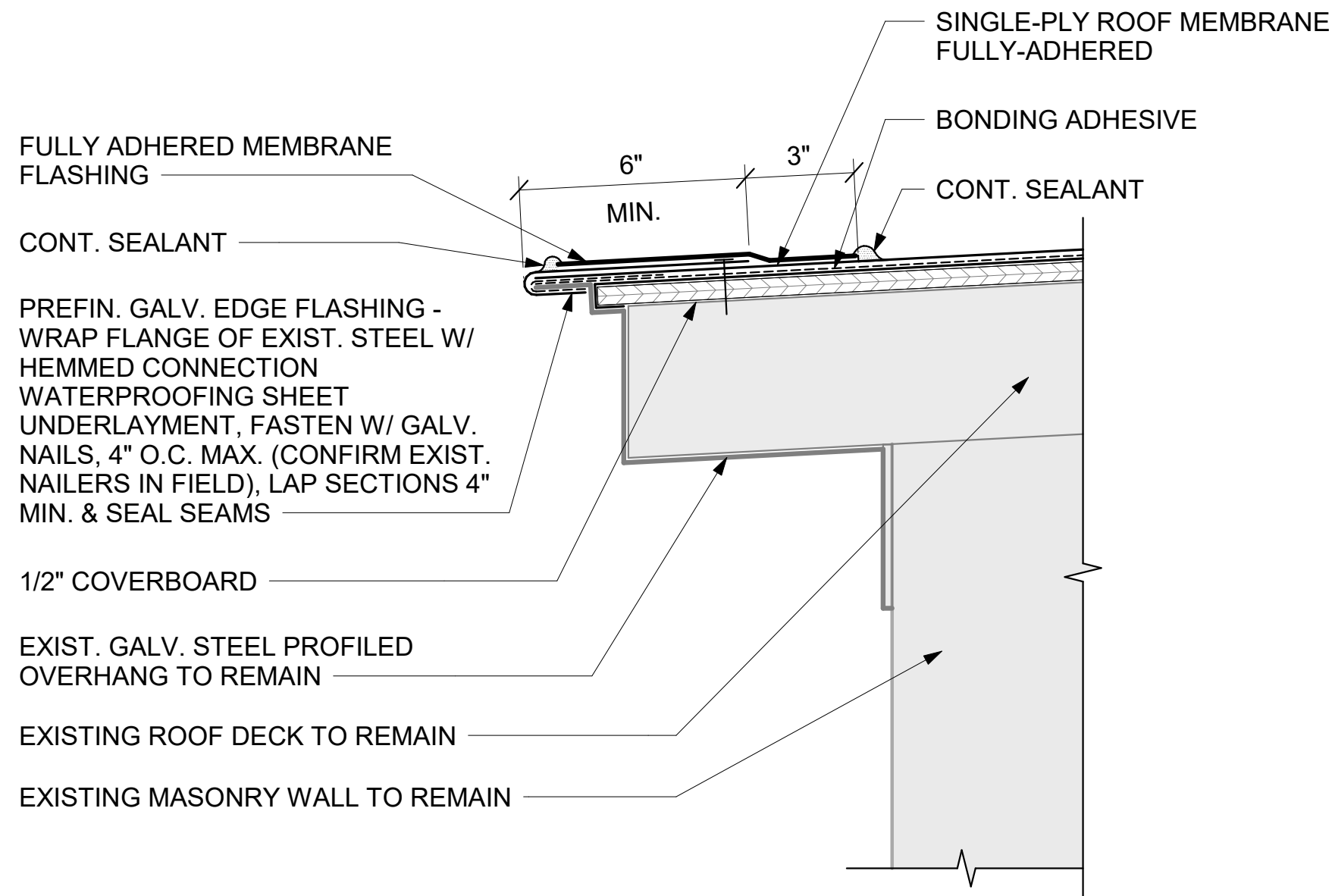


NOTE:
JOINT SHOWN FULLY OPEN AT LOWEST TEMPERATURE, REFER TO TABLE FOR EXPANSION GAP SIZE REQUIRED AT INSTALLATION TEMPERATURE.

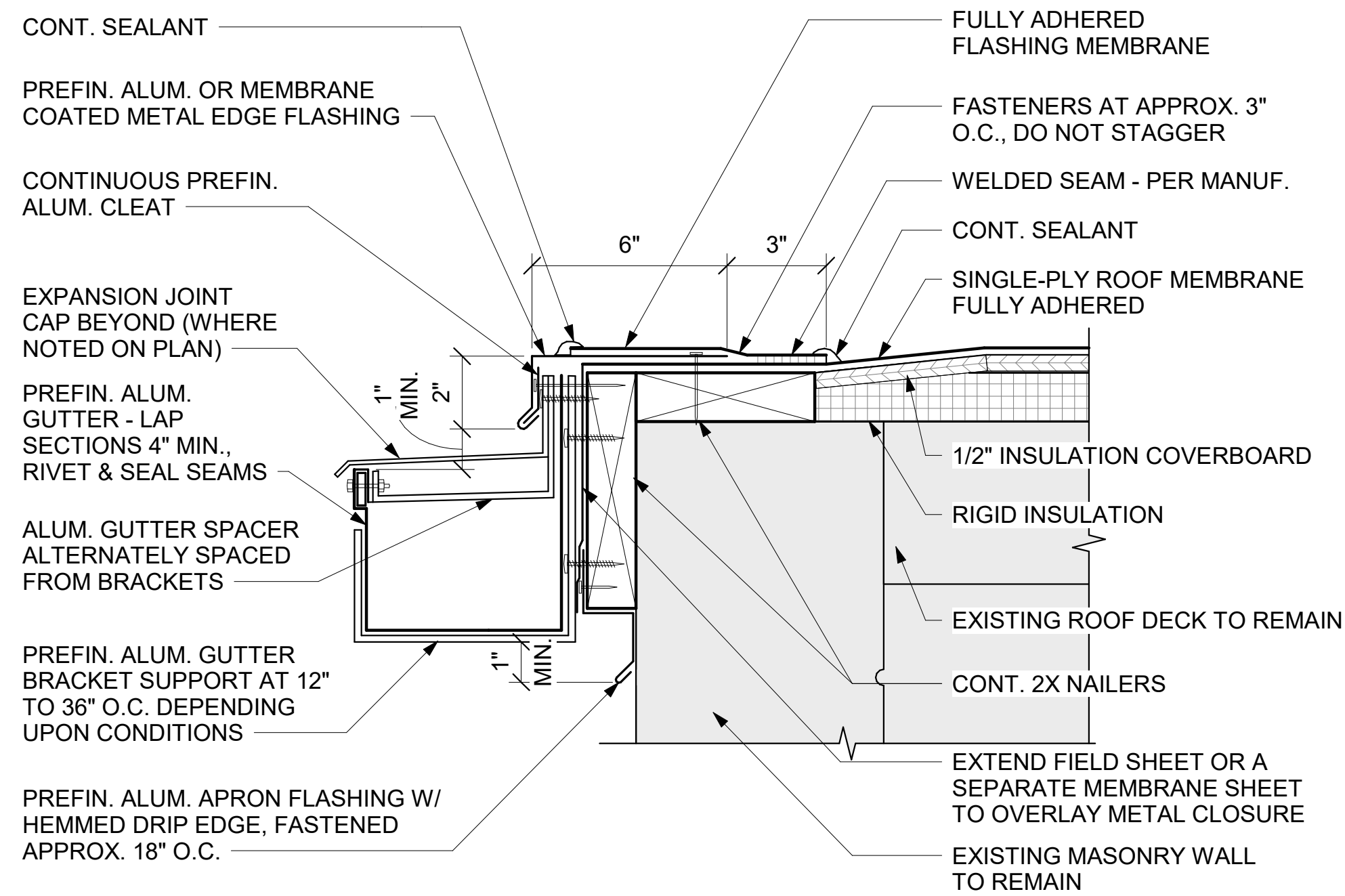
4 GUTTER EXPANSION JOINT - EJ-1
A5.3

Temp. °F, (C)	Copper or Stainless Steel		Aluminum	
	10 ft. (3 m)	50 ft. (15 m)	10 ft. (3 m)	50 ft. (15 m)
E@170 (77)	1/16" 2 mm	3/16" 5 mm	1/16" 2 mm	3/16" 5 mm
120 (49)	1/8" 3 mm	1/2" 13 mm	3/16" 5 mm	5/8" 16 mm
100 (38)	3/16" 5 mm	5/8" 16 mm	3/16" 5 mm	13/16" 21 mm
75 (24)	3/16" 5 mm	3/4" 19 mm	1/4" 6 mm	1 1/16" 27 mm
35 (1.7)	1/4" 6 mm	15/16" 24 mm	5/16" 8 mm	1 3/8" 35 mm
0 (-17)	1/4" 6 mm	1 1/8" 29 mm	3/8" 10 mm	1 1/2" 43 mm



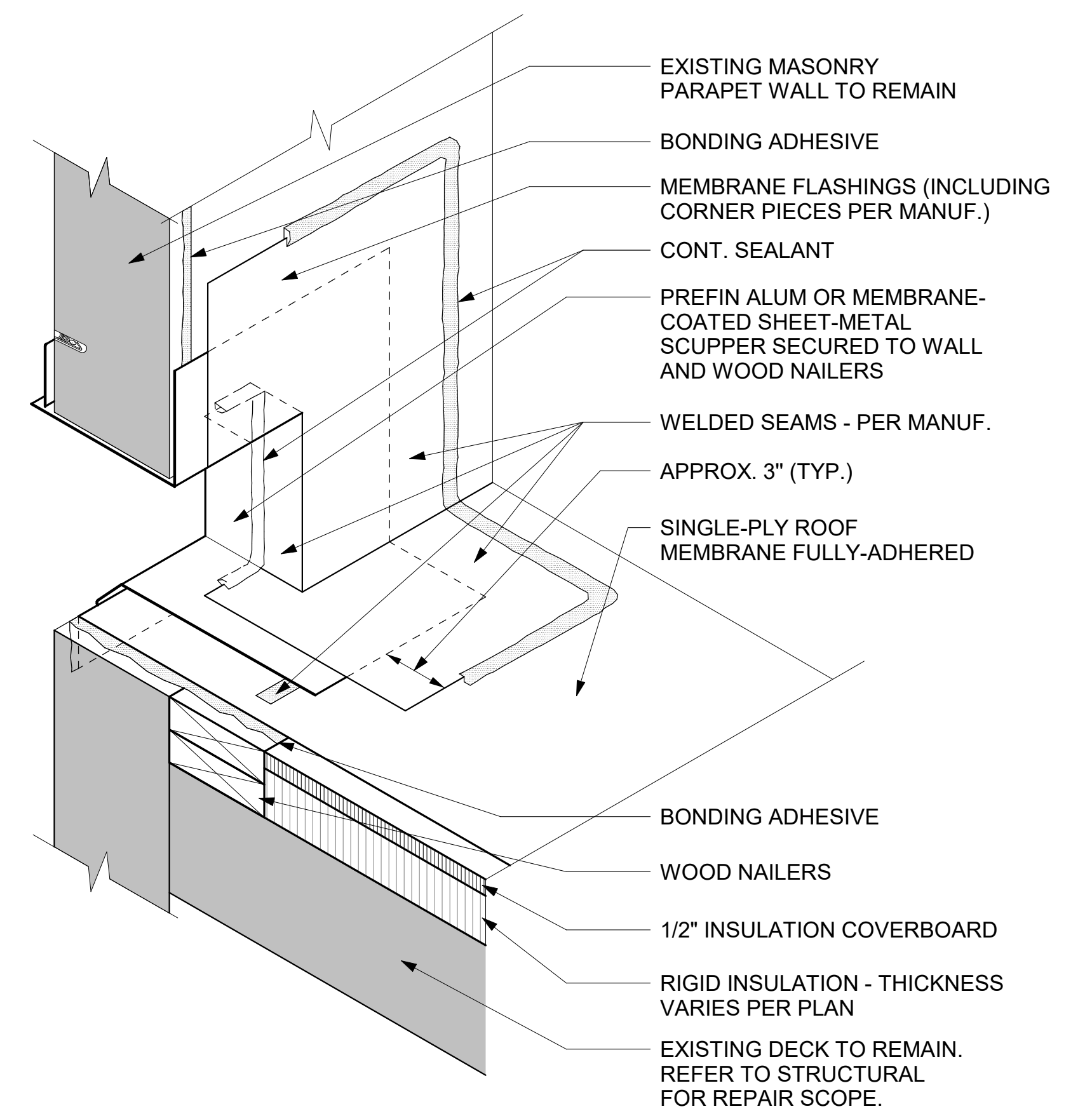
NOTE:
1. CONTRACTOR TO CONFIRM OVERHANG FRAMING & CONDITION OF EXISTING ROOF DECK IN FIELD.

3 PENTHOUSE ROOF EDGE DETAIL
A5.3 3" = 1'-0" REFERRED FROM: A1.1



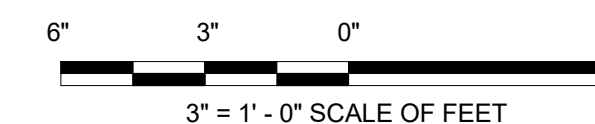
NOTES:
1. GUTTER BRACKETS TO BE AT LEAST ONE GAUGE HEAVIER THAN GUTTER STOCK.
2. ATTACH WOOD NAILER TO WALL/DECK WITH SUITABLE FASTENERS.
3. GUTTER SIZE VARIES PER LOCATION, REFER TO SPECIFICATION FOR SIZES BY TYPE, AS DESIGNATED ON PLAN.

2 EDGE & GUTTER DETAIL
A5.3 3" = 1'-0" REFERRED FROM: A1.1



NOTES:
1. CONDUCTOR HEAD TO BE 1 INCH MINIMUM BELOW BOTTOM OF THROUGH-WALL SCUPPER.
2. MAINTAIN EXIST. THRU WALL OPENING DIMENSIONS, UON.

1 THROUGH-WALL SCUPPER DETAIL - LAYERED AXON SECTION
A5.3 3" = 1'-0" REFERRED FROM:



A/E FIRMS	DESIGNED: GK	SUB SHEET NO.	TITLE OF SHEET	DRAWING NO.
ARCH: QUINN EVANS 219 1/2 N. MAIN STREET ANN ARBOR, MI T: 734.663.5888	CADD: GK	03 A5.3	HOSP BUCKSTAFF + FORDYCE ROOFS	128 182951
	TECH. REVIEW: KG		BUCKSTAFF ROOF DETAILS	PMIS/PKG NO. 318915
	DATE: 10.27.2023		REHABILITATE BATHHOUSES HOT SPRINGS NATIONAL PARK	SHEET 261 OF 286