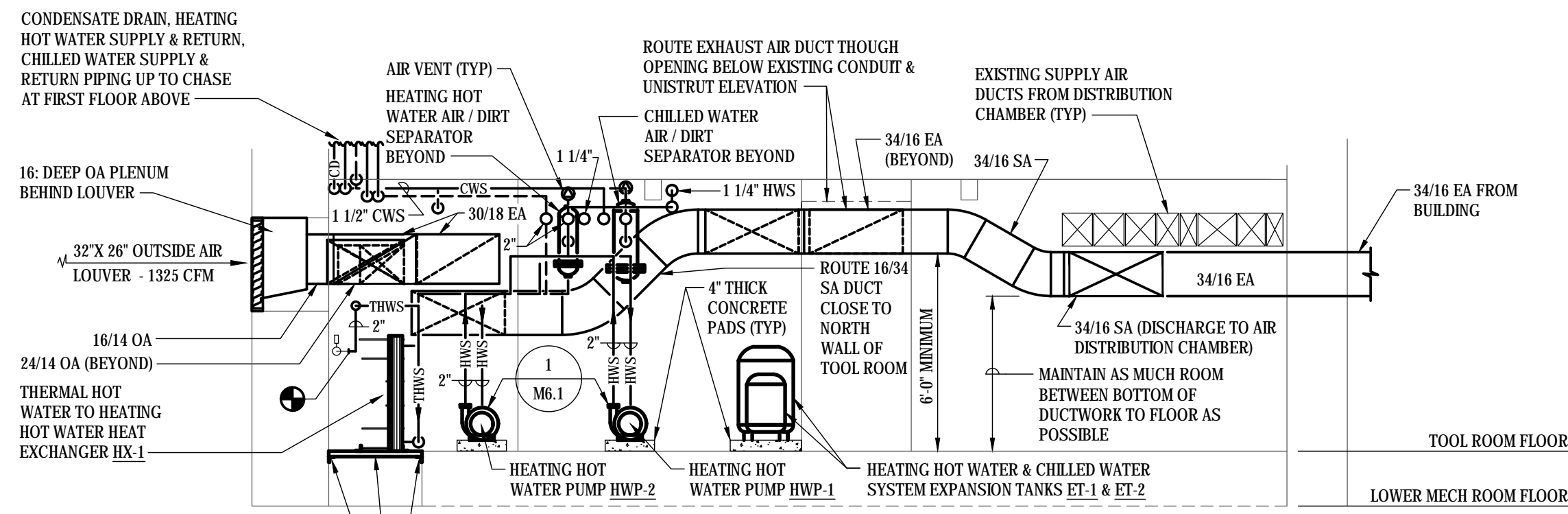
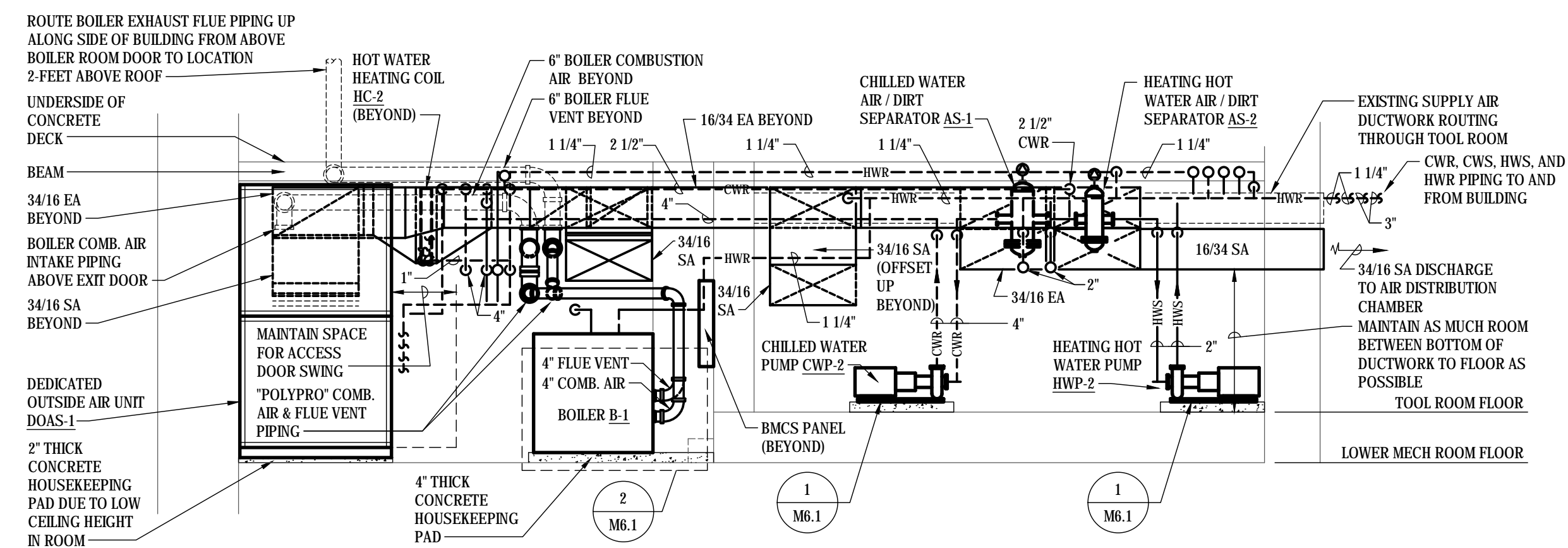


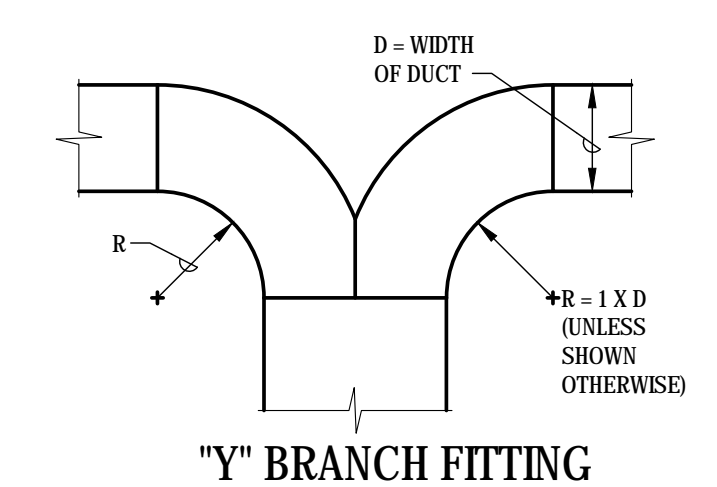
**SECTION 1**  
SCALE: 1/4" = 1'-0"  
M6-2



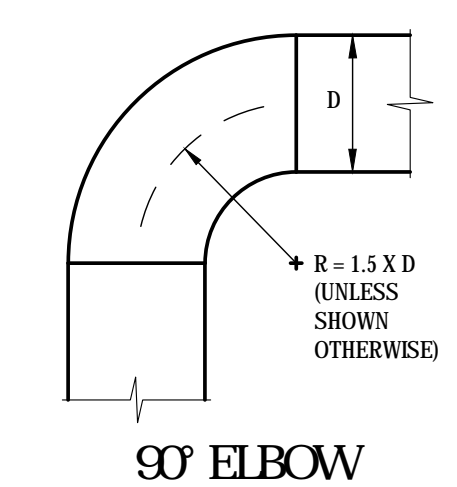
**SECTION 2**  
SCALE: 1/4" = 1'-0"  
M6-2



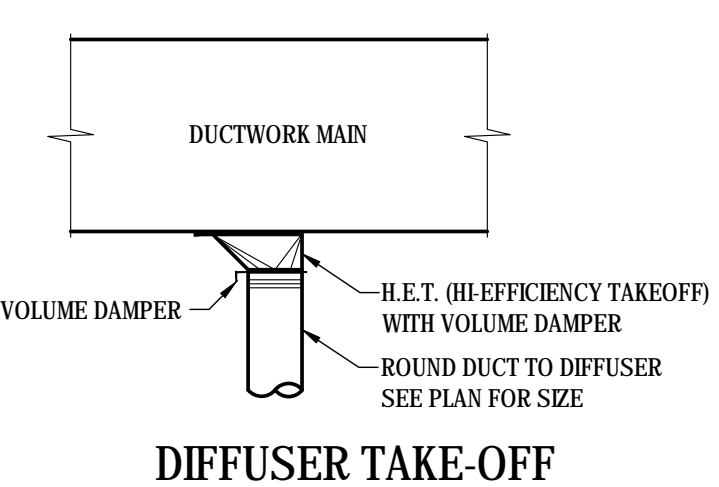
**SECTION 3**  
SCALE: 1/4" = 1'-0"  
M6-2



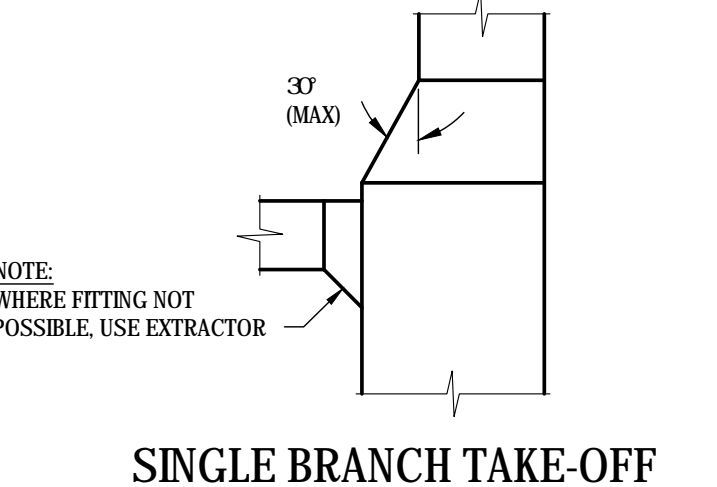
**Y BRANCH FITTING**



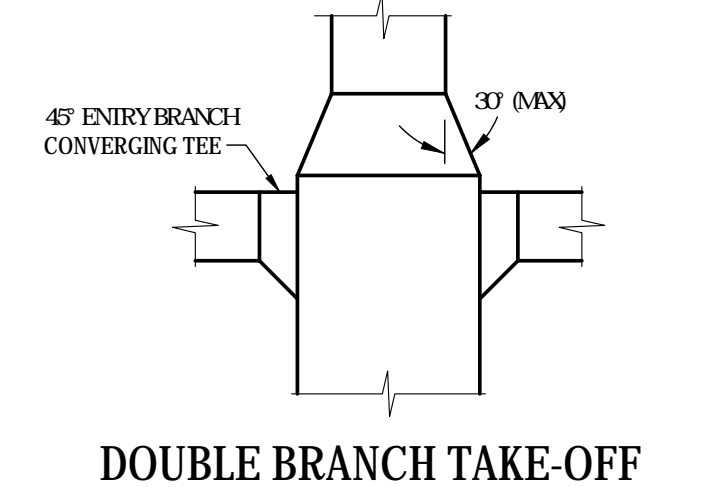
**90 ELBOW**



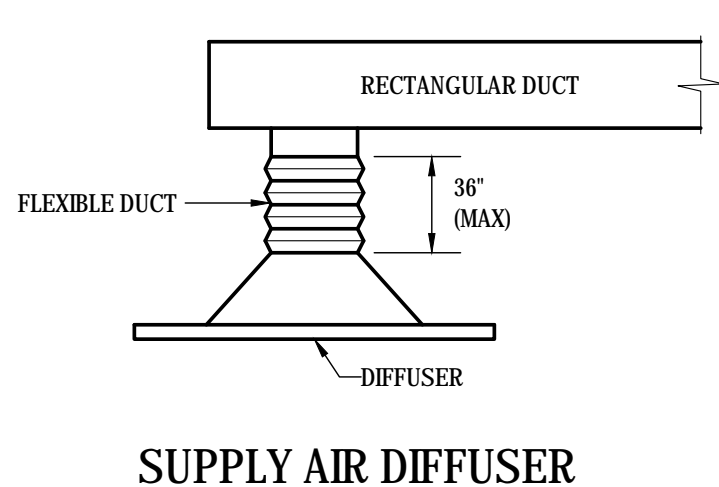
**DIFFUSER TAKE-OFF**



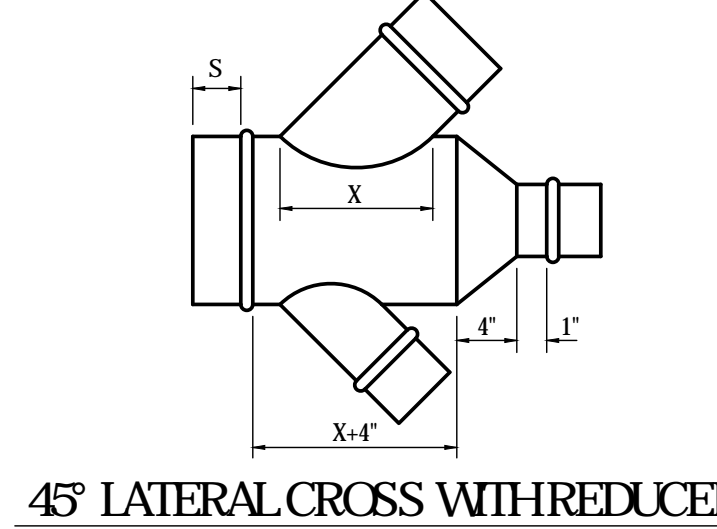
**SINGLE BRANCH TAKE-OFF**



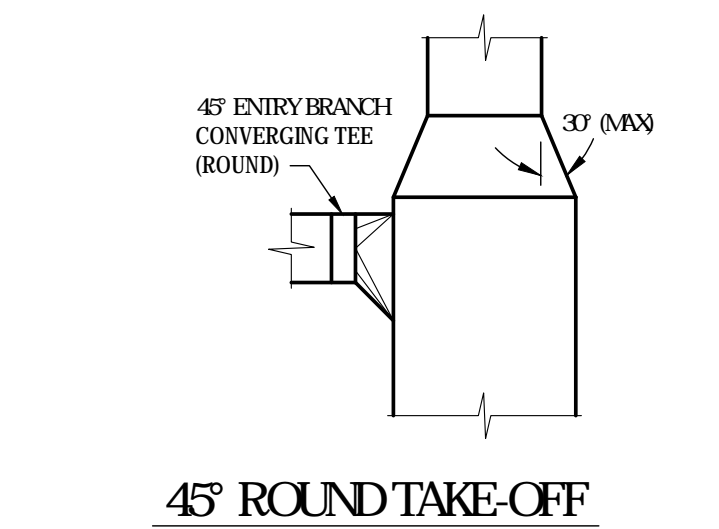
**DOUBLE BRANCH TAKE-OFF**



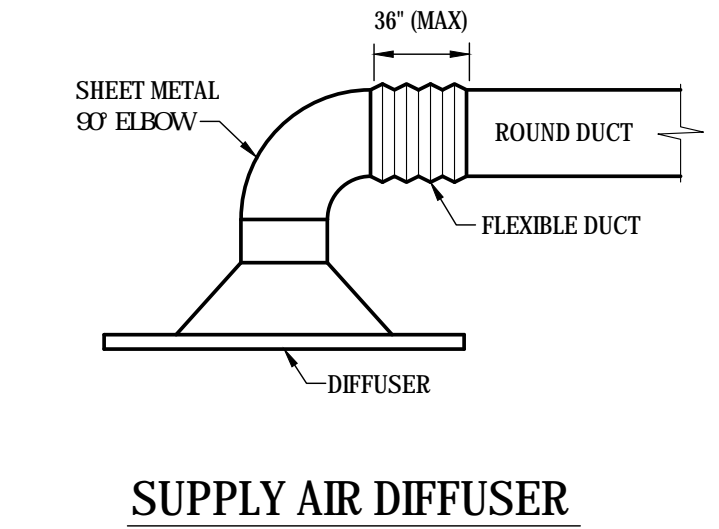
**SUPPLY AIR DIFFUSER**



**45 LATERAL CROSS WITH REDUCER**

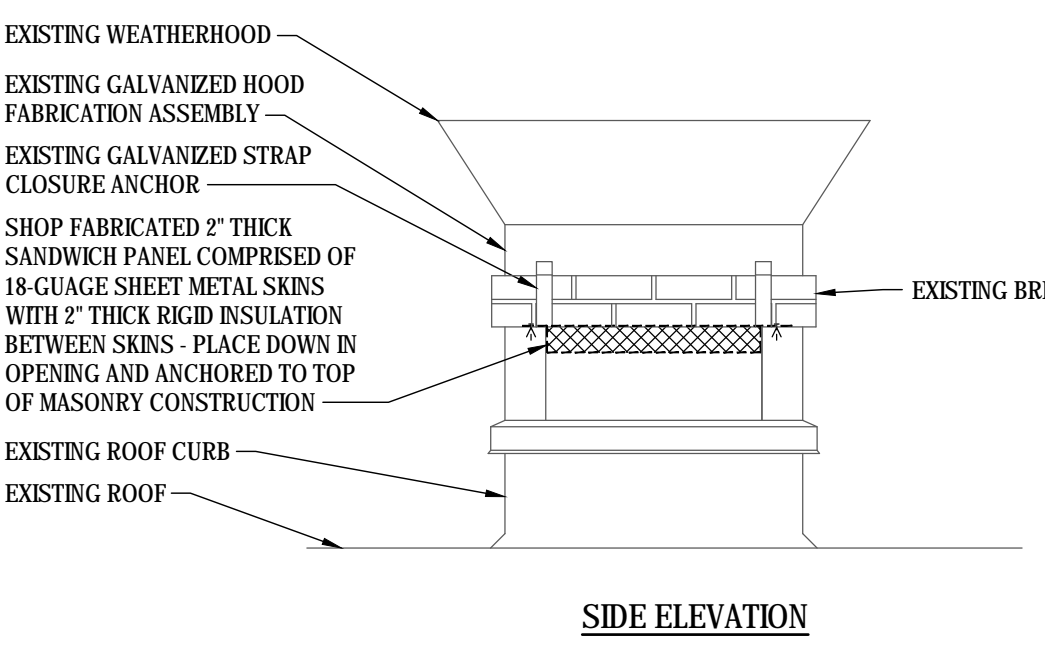


**45 ROUND TAKE-OFF**

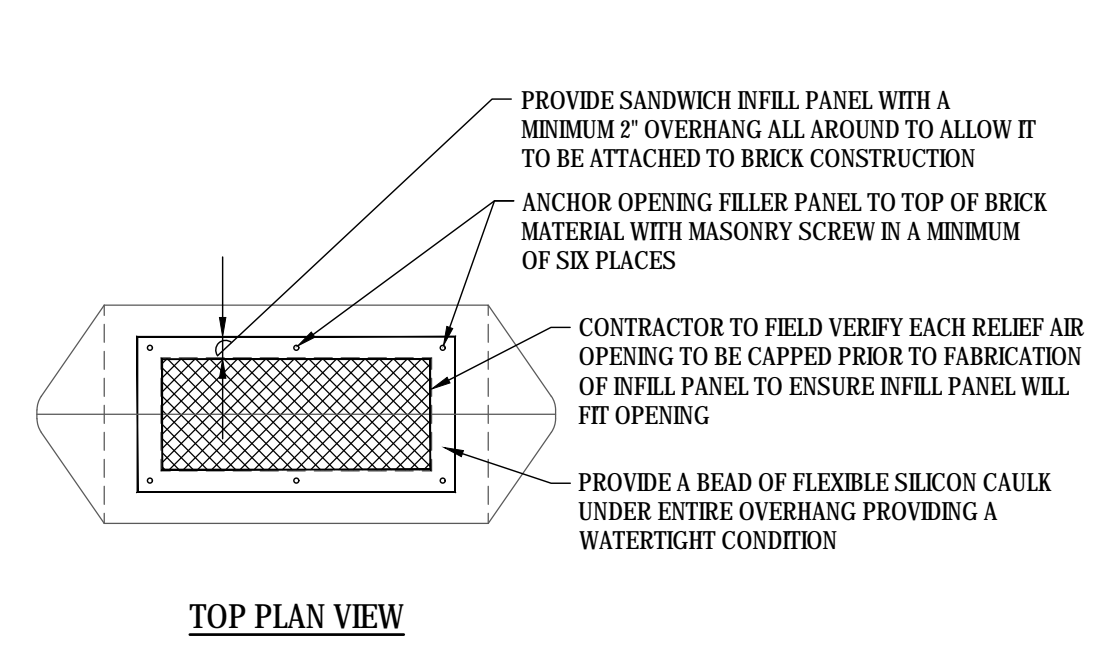


**SUPPLY AIR DIFFUSER**

**DUCT FITTING DETAILS**  
NO SCALE  
M-60 - Duct Fitting Details 2020-09-07  
M6-2



**SIDE ELEVATION**



**TOP PLAN VIEW**

**TYPICAL RELIEF OPENING CAP DETAIL**  
NO SCALE  
M6-2

© COPYRIGHT 2024 A/E 20239955  
Permission to reproduce all or part of this drawing is hereby granted solely for the limited purpose of construction of this project or archiving. Unauthorized copying, disclosure or construction use without written permission of Alvine Engineering is prohibited by copyright law.  
**NOTE:**  
DO NOT SCALE DRAWINGS. VERIFY ALL DIMENSIONS and clearances from ARCHITECTURAL, STRUCTURAL, shop and other appropriate drawing or at site. lay out and coordinate all work prior to installation to provide clearances required for operation, maintenance, and codes and verify non-interference with other work. DO NOT FABRICATE PRIOR TO VERIFICATION OF CLEARANCE FOR ALL TRADES. READ SPECIFICATIONS.

FINAL CONSTRUCTION DOCUMENTS

A/E FIRM PRIME: KENNETH HAHN ARCHITECTS, INC. OMAHA, NE. SUBCONTRACTOR: ALVINE ENGINEERING OMAHA, NE.	DESIGNED: MRG DRAWN BY: MRG TECH. REVIEW: BAH DATE: 2/15/2024	SUB SHEET NO.  <b>M6-2</b>	TITLE OF SHEET <b>MECHANICAL SECTIONS AND DETAILS</b> BUCKSTAFF BATHHOUSE HVAC HOT SPRINGS NATIONAL PARK HOT SPRINGS, AK	DRAWING NO. XXX/XXXX PMIS NO. 177425 SHEET 32 OF 60
---	--	----------------------------------	--	--