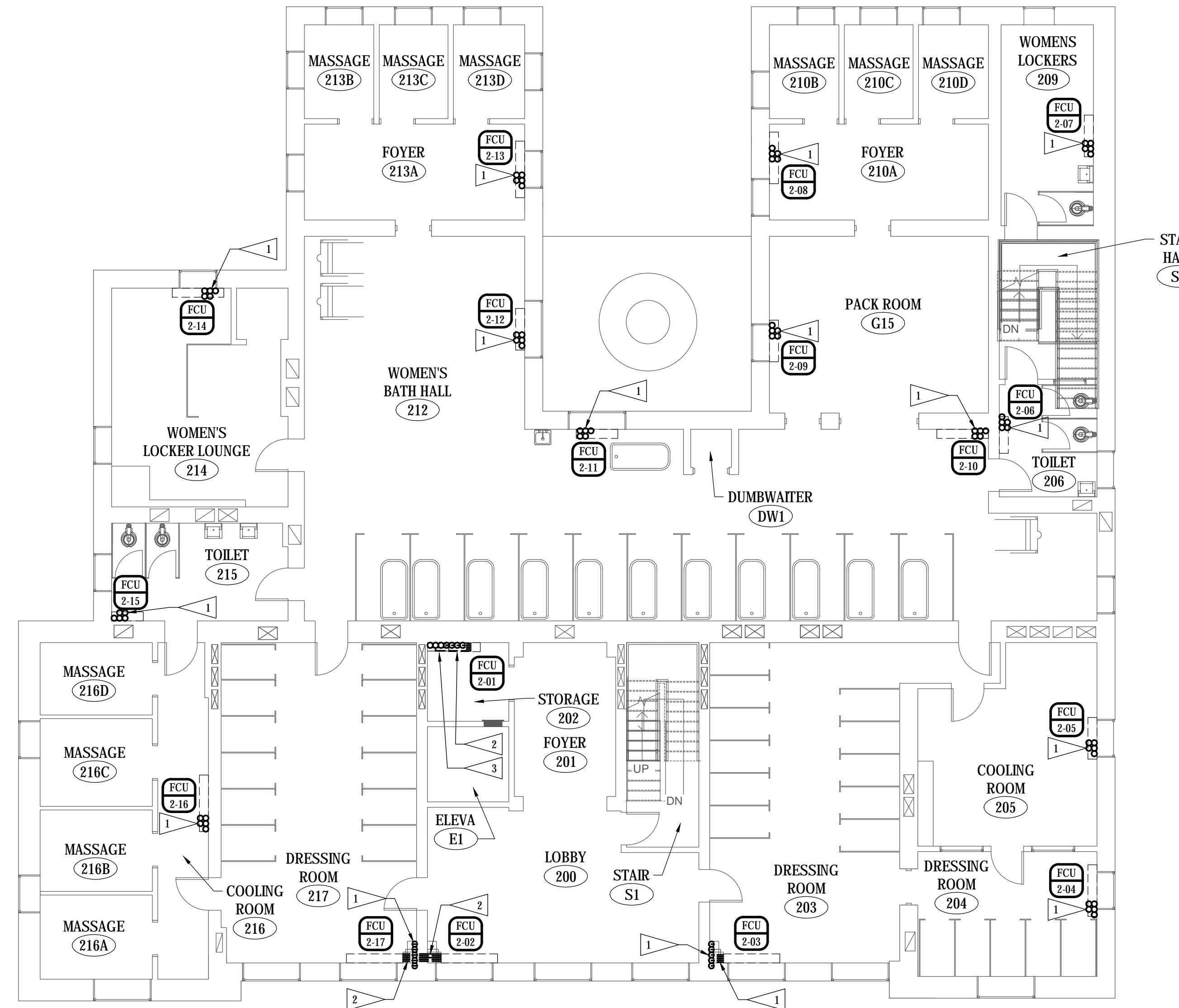


FLAG NOTES

- 1 3/4" CHILLED WATER SUPPLY & RETURN, 3/4" HEATING HOT WATER SUPPLY & RETURN AND 3/4" CONDENSATE DRAIN PIPING DOWN TO FIRST FLOOR CHASE.
- 2 ROUTE 3/4" CHILLED WATER SUPPLY & RETURN, 3/4" HEATING HOT WATER SUPPLY & RETURN AND 3/4" CONDENSATE DRAIN PIPED HORIZONTALLY FROM VERTICAL RISERS AT CHASE TO FAN COIL UNIT ON THIS FLOOR.
- 3 1" - 7" W.C. NATURAL GAS, 3/4" DRAIN PAN DRAIN, AND 3/4" CONDENSATE DRAIN UP AND DOWN IN CHASE. 3/4" CHILLED WATER SUPPLY & RETURN, AND 3/4" HEATING HOT WATER SUPPLY & RETURN PIPING DOWN IN CHASE.



© COPYRIGHT 2024 AEF 20239955
 Permission to reproduce all or part of this drawing is hereby granted solely for the limited purpose of construction of this project or archiving. Unauthorized copying, disclosure or construction use without written permission of Alvine Engineering is prohibited by copyright law.
NOTE:
 DO NOT SCALE DRAWINGS. VERIFY ALL DIMENSIONS and clearances from ARCHITECTURAL, STRUCTURAL, shop and other appropriate drawing or at site. lay out and coordinate all work prior to installation to provide clearances required for operation, maintenance, and codes and verify non-interference with other work. DO NOT FABRICATE PRIOR TO VERIFICATION OF CLEARANCE FOR ALL TRADES. READ SPECIFICATIONS.

FINAL CONSTRUCTION DOCUMENTS

SECOND FLOOR PLAN - HVAC PIPING
 SCALE: 1/8" = 1'-0"

A/E FIRM PRIME: KENNETH HAHN ARCHITECTS, INC. OMAHA, NE. SUBCONTRACTOR: ALVINE ENGINEERING OMAHA, NE.	DESIGNED: MRG	SUB SHEET NO. M3-3	TITLE OF SHEET SECOND FLOOR PLAN - HVAC PIPING BUCKSTAFF BATHHOUSE HVAC HOT SPRINGS NATIONAL PARK HOT SPRINGS, AK	DRAWING NO. XXX/XXXX
	DRAWN BY: MRG			PMIS NO. 177425
	TECH. REVIEW: BAH			SHEET
	DATE: 2/15/2024			26 OF 60

February 16, 2024 7:21am MK-L.dwg impregray