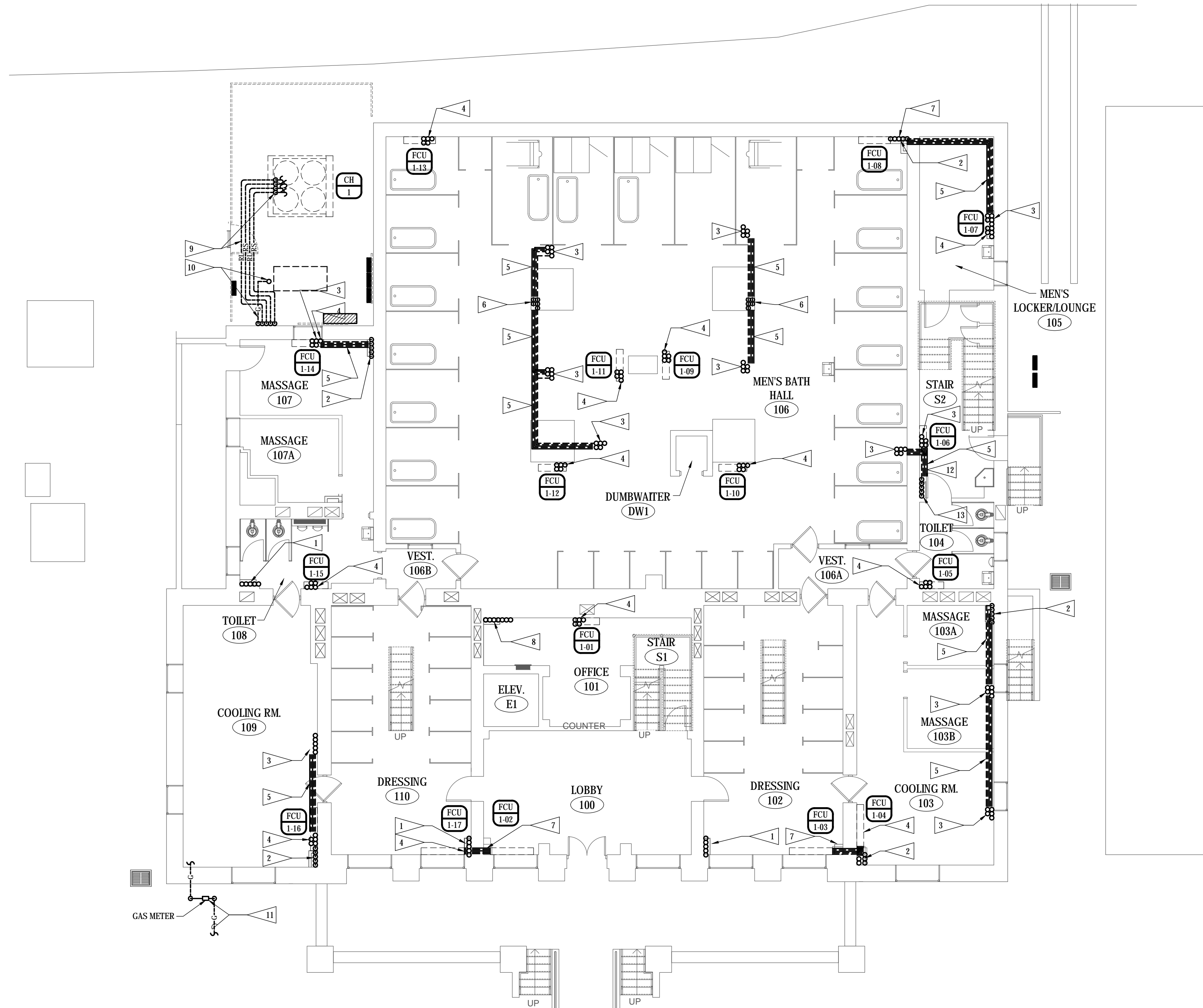


FLAG NOTES

- 1 3/4" CHILLED WATER SUPPLY & RETURN, 3/4" HEATING HOT WATER SUPPLY & RETURN, AND 3/4" CONDENSATE DRAIN PIPING DOWN IN NEW CHASE AND UP TO FAN COIL UNIT AT SECOND FLOOR.
- 2 3/4" CHILLED WATER SUPPLY & RETURN, 3/4" HEATING HOT WATER SUPPLY & RETURN, AND 3/4" CONDENSATE DRAIN PIPING DOWN IN NEW CHASE.
- 3 3/4" CHILLED WATER SUPPLY & RETURN, 3/4" HEATING HOT WATER SUPPLY & RETURN, AND 3/4" CONDENSATE DRAIN PIPING UP TO FAN COIL UNIT AT SECOND FLOOR.
- 4 3/4" CHILLED WATER SUPPLY & RETURN, 3/4" HEATING HOT WATER SUPPLY & RETURN, AND 3/4" CONDENSATE DRAIN PIPING FROM FAN COIL UNIT AT FIRST FLOOR DOWN TO BASEMENT FLOOR.
- 5 ROUTE 3/4" CHILLED WATER SUPPLY AND RETURN, 3/4" HEATING HOT WATER SUPPLY AND RETURN, AND 3/4" CONDENSATE DRAIN PIPING IN SOFFIT RACKED ALONG WALL (SEE ARCHITECTURAL DRAWINGS FOR SOFFIT).
- 6 1" CHILLED WATER SUPPLY & RETURN, 1" HEATING HOT WATER SUPPLY & RETURN, AND 1" CONDENSATE DRAIN PIPING DOWN IN EXISTING CHASE TO BASEMENT FLOOR.
- 7 ROUTE 3/4" CHILLED WATER SUPPLY & RETURN, 3/4" HEATING HOT WATER SUPPLY & RETURN, AND 3/4" CONDENSATE PIPING TO FAN COIL ON FIRST FLOOR FROM RISERS AT ADJACENT CHASE.
- 8 1" - 7" W.C. NATURAL GAS, 3/4" DRAIN PAN DRAIN, 3/4" CONDENSATE DRAIN, 3/4" RETURN PIPING UP AND DOWN IN CHASE.
- 9 SUPPORT REFRIGERANT PIPING BELOW CHILLER SUPPORT STRUCTURE. OFFSET PIPING UP TO ABOVE CHILLER SUPPORT STRUCTURE AND CONTINUE PIPING TO CHILLER CONNECTION LOCATIONS.
- 10 SUPPORT NATURAL GAS PIPING BELOW CHILLER SUPPORT STRUCTURE. OFFSET PIPING UP TO ABOVE CHILLER SUPPORT STRUCTURE AND CONTINUE PIPING TO EMERGENCY ENGINE GENERATOR.
- 11 NATURAL GAS METER AND UNDERGROUND GAS UTILITY TO BE PROVIDED BY LOCAL GAS COMPANY. GAS COMPANY TO DETERMINE IF EXISTING GAS UTILITY HAS THE CAPACITY TO SERVE BUILDING CONNECTED LOAD ESTIMATED AT 3055 CFH.
- 12 3/4" CHILLED WATER SUPPLY & RETURN, 3/4" HEATING HOT WATER SUPPLY & RETURN, AND 3/4" CONDENSATE DRAIN PIPING FROM VERTICAL CHASE TO FAN COIL UNIT AT FIRST FLOOR. RACK PIPING ALONG WALL FROM WALL WITH UNISTRUT AND PIPE CLAMPS. HIDE PIPING AT WALL WITH METAL ENCLOSURE HUNG FROM WALL WITH METAL CLIPS. PROVIDE ENCLOSURE WITH A MINIMUM DEPTH OF 5" AND A HEIGHT MATCHING ADJACENT FAN COIL UNIT. CONTRACTOR SHALL PROVIDE KYNAR FINISH OVER ENCLOSURE WITH COLOR TO MATCH ADJACENT FAN COIL UNIT.
- 13 ROUTE 3/4" CHILLED WATER SUPPLY & RETURN, 3/4" HEATING HOT WATER SUPPLY & RETURN, AND 3/4" CONDENSATE DRAIN PIPING IN VERTICAL CHASE ROUTING FROM BELOW FLOOR TO SOFFIT BELOW SECOND FLOOR. PROVIDE BRANCH PIPING TO FAN COIL AT FIRST FLOOR FROM VERTICAL RISERS IN CHASE.



© COPYRIGHT 2024 AEF 20239955
 Permission to reproduce all or part of this drawing is hereby granted solely for the limited purpose of construction of this project or archiving. Unauthorized copying, disclosure or construction use without written permission of Alvine Engineering is prohibited by copyright law.
NOTE:
 DO NOT SCALE DRAWINGS. VERIFY ALL DIMENSIONS and clearances from ARCHITECTURAL, STRUCTURAL, shop and other appropriate drawing or at site. lay out and coordinate all work prior to installation to provide clearances required for operation, maintenance, and codes and verify non-interference with other work. DO NOT FABRICATE PRIOR TO VERIFICATION OF CLEARANCE FOR ALL TRADES. READ SPECIFICATIONS.

FINAL CONSTRUCTION DOCUMENTS

GROUND FLOOR PLAN - HVAC PIPING
 SCALE: 1/8" = 1'-0"

A/E FIRM PRIME: KENNETH HAHN ARCHITECTS, INC. OMAHA, NE. SUBCONTRACTOR: ALVINE ENGINEERING OMAHA, NE.	DESIGNED: MRG	SUB SHEET NO. M3-2	TITLE OF SHEET GROUND FLOOR PLAN - HVAC PIPING BUCKSTAFF BATHHOUSE HVAC HOT SPRINGS NATIONAL PARK HOT SPRINGS, AK	DRAWING NO. XXX/XXXX
	DRAWN BY: MRG		PMIS NO. 177425	
	TECH. REVIEW: BAH		SHEET	
	DATE: 2/15/2024		25 OF 60	