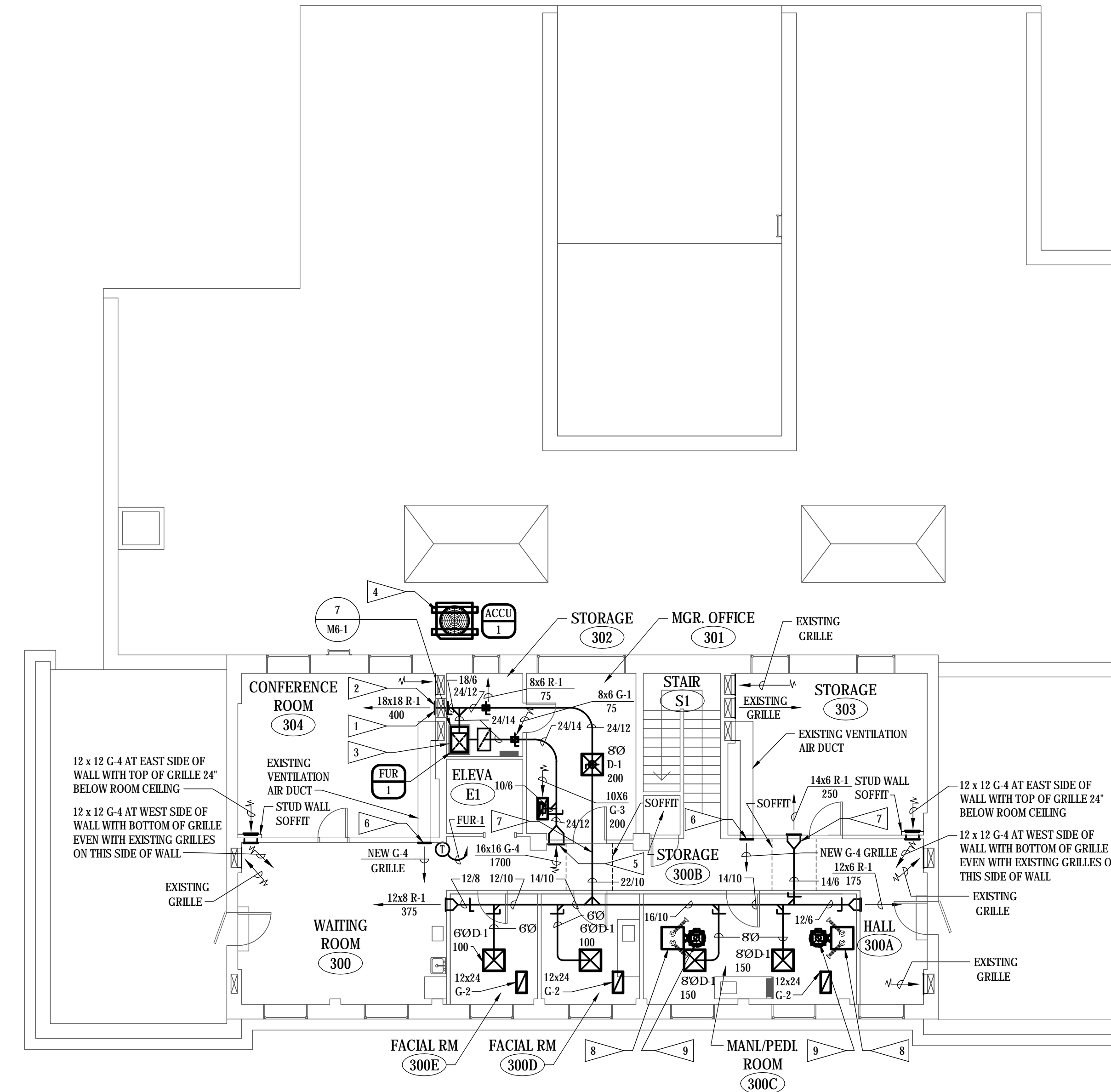


**FLAG NOTES**

- 1 CONTRACTOR TO REMOVE EXISTING GRILLE AND PROVIDE NEW OPENING IN WALL TO VENTILATION SHAFT AT AN ELEVATION AT 6'-6" ABOVE FLOOR. REINSTALL EXISTING GRILLE AT NEW OPENING IN WALL. NEW OPENING IN WALL TO MATCH EXISTING OPENING (FIELD VERIFY SIZE).
- 2 INSTALL NEW DUCTWORK THROUGH EXISTING SHAFT WALL. LOCATE NEW SIDEWALL SUPPLY GRILLE AT SAME BOTTOM ELEVATION AS GRILLE REMOVED AND RELOCATED. PATCH EXISTING OPENING IN WALL AS REQUIRED SO NO OPENING IS VISIBLE AFTER NEW GRILLE IS INSTALLED AT OPENING.
- 3 NEW VERTICALLY CONFIGURED, HI-EFFICIENCY GAS-FIRED, FURNACE WITH DX COOLING COIL. MOUNT FURNACE IN AUXILIARY DRAIN PAN ON FLOOR. PROVIDE FURNACE WITH BOTTOM RETURN AIR BASE ALLOWING BOTH SIDE AND BOTTOM RETURN AIR CONNECTION.
- 4 AIR-COOLED CONDENSING UNIT LOCATED AT ROOF ADJACENT TO THIRD LEVEL. SUPPORT ON PREFABRICATED ROOF EQUIPMENT SUPPORT.
- 5 SIDEWALL RETURN AIR GRILLE AT CORRIDOR WALL.
- 6 PROVIDE NEW SIDEWALL VENTILATION AIR DISCHARGE GRILLES AT CORRIDOR WALL. CONTRACTOR SHALL VERIFY SIZE OF EXISTING GRILLES REMOVED AS PART OF DEMOLITION WORK AND PROVIDE NEW GRILLES WITH SIZE TO MATCH GRILLES REMOVED.
- 7 ROUTE DUCT ACROSS CORRIDOR IN ARCHITECTURAL SOFFIT AS HIGH AS POSSIBLE AS DUCTWORK PASSES BELOW EXISTING BEAM AT DOORWAY OF MANAGERS OFFICE.
- 8 PROVIDE AIR PURIFICATION SYSTEM FOR PEDICURE AND MANICURE STATIONS. SYSTEMS SHALL BE "HEALTHY AIR" MODEL HA-CMSC-G2-3-WD OVERHEAD SUPPORTED SOURCE CAPTURE SYSTEMS. PROVIDE EACH SYSTEM WITH 2-QTY. 7-FOOT LONG x 3" DIAMETER SELF-SUPPORTING EXTRACTION HOSES WITH RECTANGULAR INLET HOODS WITH 50 CFM AIRFLOW PER HOOD. UNIT OPERATION SHALL BE THROUGH REMOTE CONTROL OPERATORS. EACH SYSTEM SHALL BE PROVIDED WITH PRE-FILTERS, HEPA FILTERS, CARBON ACTIVATED FILTERS AND 10 KV ELECTROSTATIC FIELD. SUSPEND/SUPPORT EACH UNIT FROM CONCRETE STRUCTURE ABOVE PER MANUFACTURER'S RECOMMENDATIONS (COORDINATE LOCATION WITH END USER). PROVIDE EACH AIR PURIFICATION SYSTEM OUTLET TRANSITION ALLOWING DUCTED CONDITION TO TO 6" DIAMETER EXHAUST DUCT.
- 9 PROVIDE EACH 6" DIAMETER EXHAUST DUCT WITH 120-VOLT MOTORIZED DAMPER TO OPEN WHEN AIR PURIFICATION SYSTEM IS ON AND CLOSE WHEN AIR PURIFICATION SYSTEM IS OFF. ROUTE EXHAUST AIR DUCTS UP TO EXHAUST HOOD HD-1 ON ROOF ABOVE. PROVIDE DUCT TRANSITION FROM ROUND DUCT TO CURB INLET AS REQUIRED.



**THIRD FLOOR PLAN - HVAC**  
SCALE: 1/8" = 1'-0"

© COPYRIGHT 2024 AEF 20239955  
Permission to reproduce all or part of this drawing is hereby granted solely for the limited purpose of construction of this project or archiving. Unauthorized copying, disclosure or construction use without written permission of Alvine Engineering is prohibited by copyright law.  
**NOTE:**  
DO NOT SCALE DRAWINGS. VERIFY ALL DIMENSIONS and clearances from ARCHITECTURAL, STRUCTURAL, shop and other appropriate drawing or at site. lay out and coordinate all work prior to installation to provide clearances required for operation, maintenance, and codes and verify non-interference with other work. DO NOT FABRICATE PRIOR TO VERIFICATION OF CLEARANCE FOR ALL TRADES. READ SPECIFICATIONS.

FINAL CONSTRUCTION DOCUMENTS

A/E FIRM PRIME: KENNETH HAHN ARCHITECTS, INC. OMAHA, NE. SUBCONTRACTOR: ALVINE ENGINEERING OMAHA, NE.	DESIGNED: MRG	SUB SHEET NO.  <b>M2-4</b>	TITLE OF SHEET  <b>THIRD FLOOR PLAN - HVAC</b>	DRAWING NO. XXX/XXXX
	DRAWN BY: MRG		BUCKSTAFF BATHHOUSE HVAC HOT SPRINGS NATIONAL PARK HOT SPRINGS, AK	PMIS NO. 177425
	TECH. REVIEW: BAH			SHEET
	DATE: 2/15/2024			22 OF 60