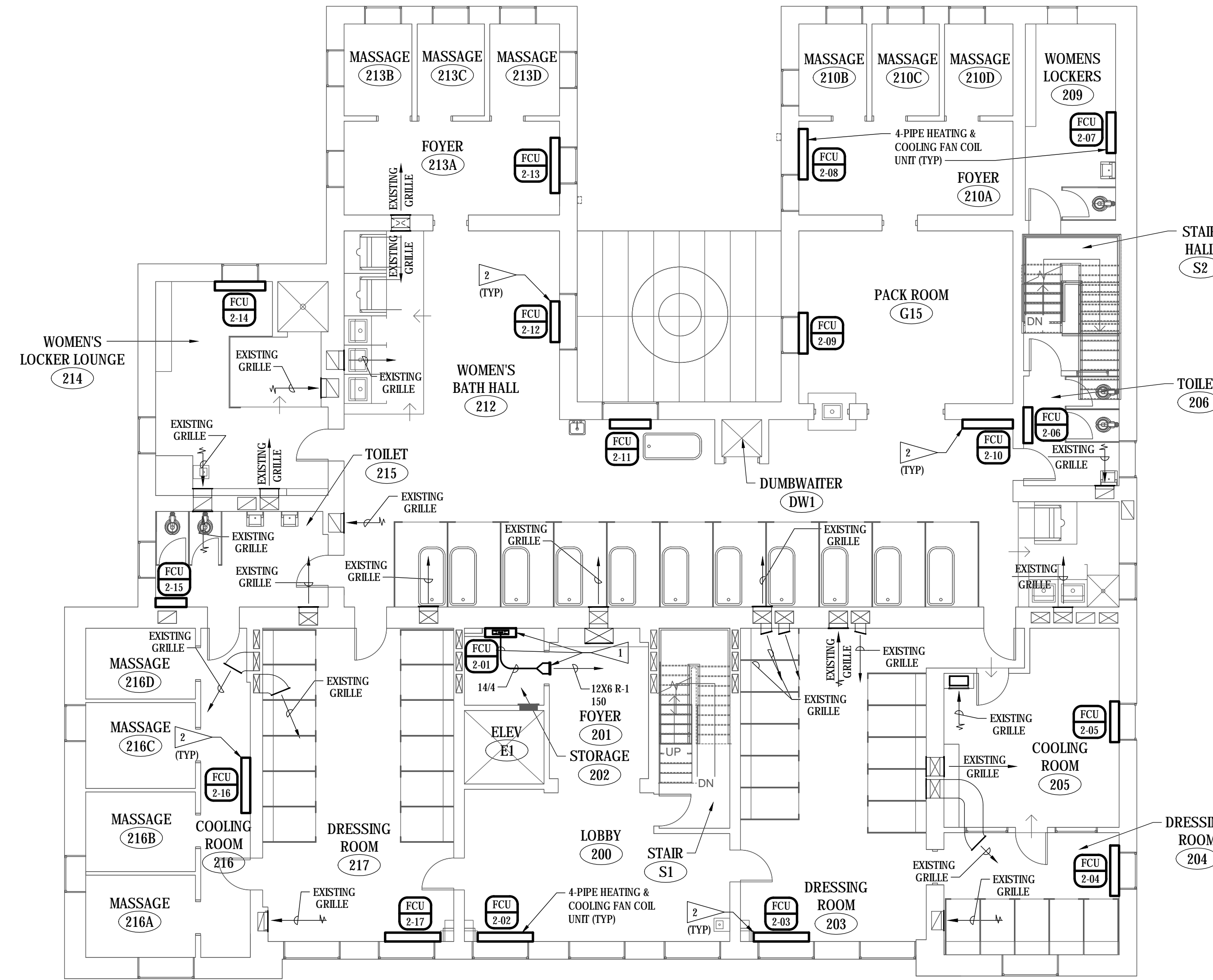


FLAG NOTES

- 1 CONNECT RIGID SUPPLY AIR DUCT TO FAN COIL UNIT DISCHARGE WITH FLEXIBLE DUCT CONNECTION. ROUTE DUCTWORK UP HIGH THROUGH ROOM TO SIDEWALL SUPPLY AIR REGISTER LOCATED AT OPPOSITE SIDE OF WALL TO SERVE EXISTING LOBBY SITTING AREA.
- 2 EACH FAN COIL UNIT SHALL BE PROVIDED WITH A CONTROLLER AND ON-BOARD TEMPERATURE SENSOR. SPACE TEMPERATURE SETPOINT SHALL BE SET THROUGH BUILDING AUTOMATION SYSTEM. SPACE TEMPERATURE OVERRIDE WILL BE POSSIBLE THROUGH MANUAL SPACE TEMPERATURE ADJUSTMENT AT EACH FAN COIL UNIT.



© COPYRIGHT 2024 AEF 20239955
 Permission to reproduce all or part of this drawing is hereby granted solely for the limited purpose of construction of this project or archiving. Unauthorized copying, disclosure or construction use without written permission of Alvine Engineering is prohibited by copyright law.
NOTE:
 DO NOT SCALE DRAWINGS. VERIFY ALL DIMENSIONS and clearances from ARCHITECTURAL, STRUCTURAL, shop and other appropriate drawing or at site. lay out and coordinate all work prior to installation to provide clearances required for operation, maintenance, and codes and verify non-interference with other work. DO NOT FABRICATE PRIOR TO VERIFICATION OF CLEARANCE FOR ALL TRADES. READ SPECIFICATIONS.

FINAL CONSTRUCTION DOCUMENTS

SECOND FLOOR PLAN - HVAC
 SCALE: 1/8" = 1'-0"

A/E FIRM PRIME: KENNETH HAHN ARCHITECTS, INC. OMAHA, NE. SUBCONTRACTOR: ALVINE ENGINEERING OMAHA, NE.	DESIGNED: MRG DRAWN BY: MRG TECH. REVIEW: BAH DATE: 2/15/2024	SUB SHEET NO. M2-3	TITLE OF SHEET SECOND FLOOR PLAN - HVAC BUCKSTAFF BATHHOUSE HVAC HOT SPRINGS NATIONAL PARK HOT SPRINGS, AK	DRAWING NO. XXX/XXX PMIS NO. 177425 SHEET 21 OF 60
---	--	----------------------------------	---	---

February 16, 2024, 7:21am MC: L.dmg, mrg@kha.com