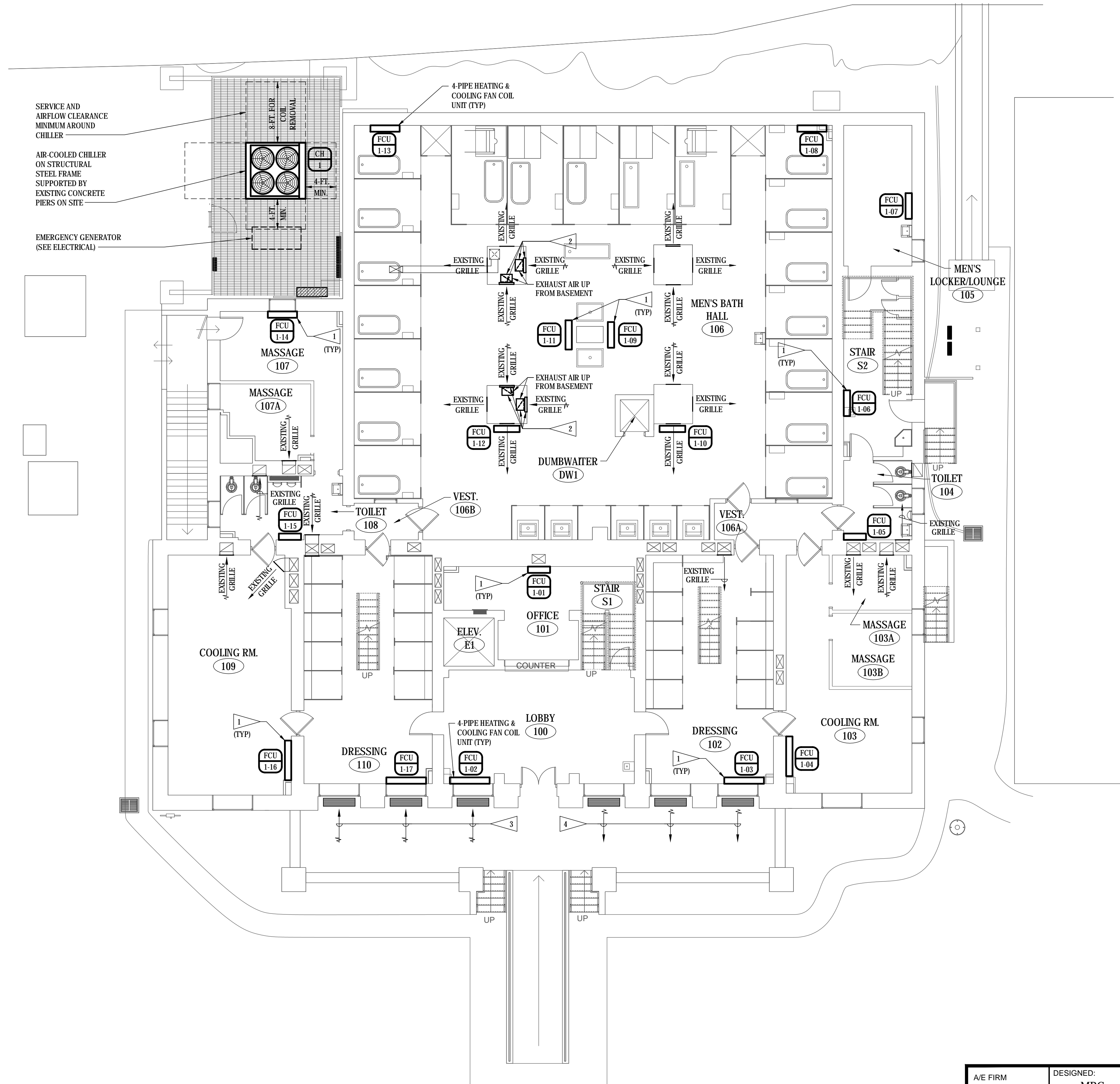


FLAG NOTES

- 1 EACH FAN COIL UNIT SHALL BE PROVIDED WITH A CONTROLLER AND ON-BOARD TEMPERATURE SENSOR. SPACE TEMPERATURE SETPOINT SHALL BE SET THROUGH BUILDING AUTOMATION SYSTEM. SPACE TEMPERATURE OVERRIDE WILL BE POSSIBLE THROUGH MANUAL SPACE TEMPERATURE ADJUSTMENT AT EACH FAN COIL UNIT.
- 2 18"X12" EXHAUST AIR DUCT UP FROM BASEMENT CRAWLSPACE BELOW. OFFSET AND CONNECT DUCT TO NEW SHEET METAL DUCT SIZED TO MATCH EXISTING GRILLE SIZE (FIELD VERIFY SIZE). PAINT INSIDE OF NEW DUCTWORK BEHIND GRILLE BLACK.
- 3 CONTRACTOR TO COMPLETELY CLEAN EXISTING EXTERIOR PORCH DECK GRILLE AS GRILLE WILL BE USED FOR NEW OUTSIDE AIR INTAKE.
- 4 CONTRACTOR TO COMPLETELY CLEAN EXISTING EXTERIOR PORCH DECK GRILLE AS GRILLE WILL BE USED FOR NEW RELIEF AIR OUTLET.



SERVICE AND AIRFLOW CLEARANCE MINIMUM AROUND CHILLER

AIR-COOLED CHILLER ON STRUCTURAL STEEL FRAME SUPPORTED BY EXISTING CONCRETE PIERS ON SITE

EMERGENCY GENERATOR (SEE ELECTRICAL)

GROUND FLOOR PLAN - HVAC
SCALE: 1/8" = 1'-0"

© COPYRIGHT 2024 A/E 20239955
Permission to reproduce all or part of this drawing is hereby granted solely for the limited purpose of construction of this project or archiving. Unauthorized copying, disclosure or construction use without written permission of Alvine Engineering is prohibited by copyright law.
NOTE:
DO NOT SCALE DRAWINGS. VERIFY ALL DIMENSIONS and clearances from ARCHITECTURAL, STRUCTURAL, shop and other appropriate drawing or at site. lay out and coordinate all work prior to installation to provide clearances required for operation, maintenance, and codes and verify non-interference with other work. DO NOT FABRICATE PRIOR TO VERIFICATION OF CLEARANCE FOR ALL TRADES. READ SPECIFICATIONS.

FINAL CONSTRUCTION DOCUMENTS

A/E FIRM PRIME: KENNETH HAHN ARCHITECTS, INC. OMAHA, NE. SUBCONTRACTOR: ALVINE ENGINEERING OMAHA, NE.	DESIGNED: MRG	SUB SHEET NO. M2-2	TITLE OF SHEET GROUND FLOOR PLAN - HVAC BUCKSTAFF BATHHOUSE HVAC HOT SPRINGS NATIONAL PARK HOT SPRINGS, AK	DRAWING NO. XXX/XXXX
	DRAWN BY: MRG			PMIS NO. 177425
	TECH. REVIEW: BAH			SHEET
	DATE: 2/15/2024			20 OF 60