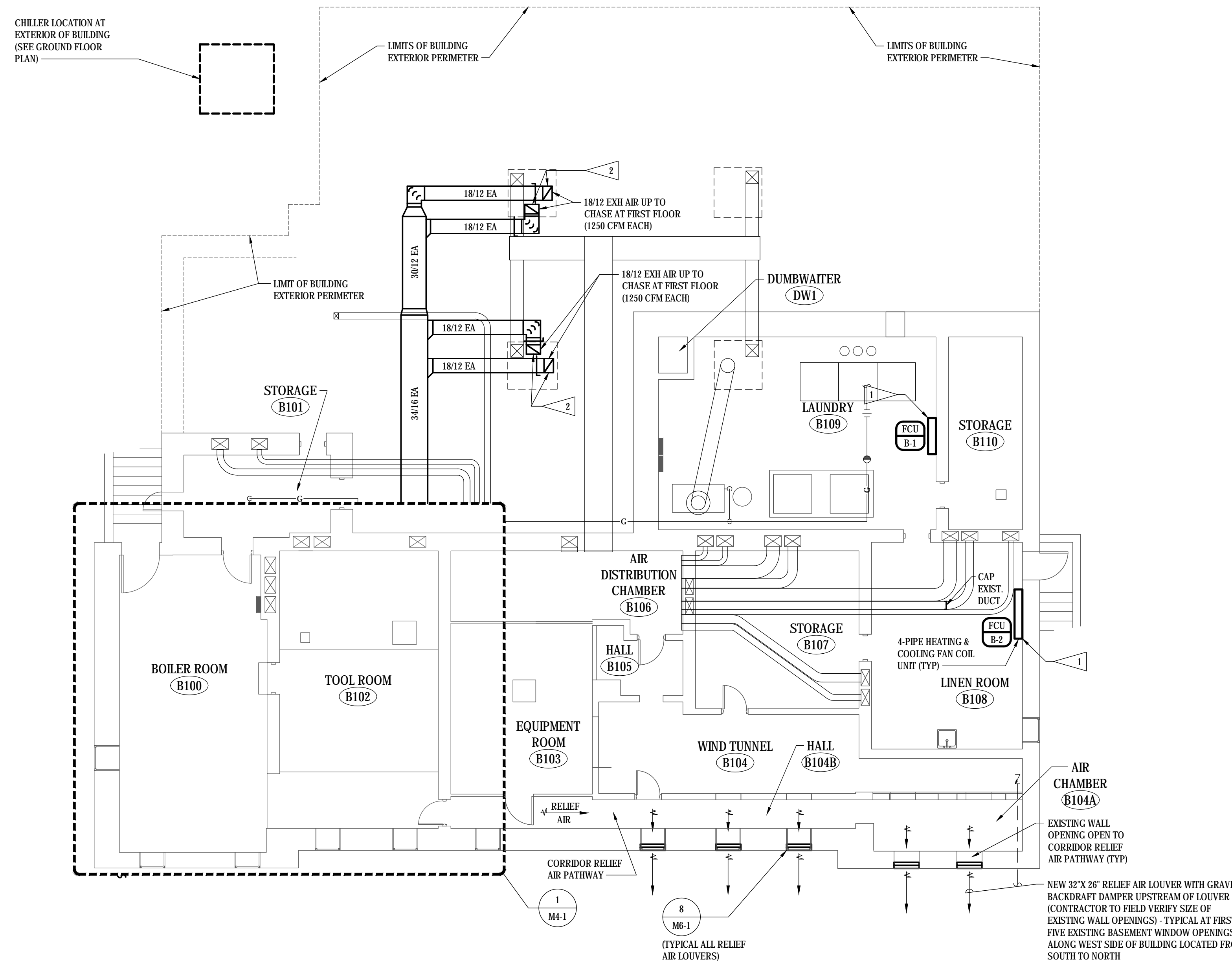


FLAG NOTES

- 1 EACH FAN COIL UNIT SHALL BE PROVIDED WITH A CONTROLLER AND ON-BOARD TEMPERATURE SENSOR. SPACE TEMPERATURE SETPOINT SHALL BE SET THROUGH BUILDING AUTOMATION SYSTEM. SPACE TEMPERATURE OVERRIDE WILL BE POSSIBLE THROUGH MANUAL SPACE TEMPERATURE ADJUSTMENT AT EACH FAN COIL UNIT.
- 2 ROUTE NEW EXHAUST AIR DUCTS UP TO GROUND FLOOR ENCLOSURES AT GROUND FLOOR ABOVE. COORDINATE NEW EXHAUST DUCT ROUTING WITHIN EXISTING CRAWLSPACE WITH EXISTING VENTILATION DUCTWORK ROUTING TO SAME ENCLOSURES AT GROUND FLOOR.



© COPYRIGHT 2024 AEF 20239955
 Permission to reproduce all or part of this drawing is hereby granted solely for the limited purpose of construction of this project or archiving. Unauthorized copying, disclosure or construction use without written permission of Alvine Engineering is prohibited by copyright law.
NOTE:
 DO NOT SCALE DRAWINGS. VERIFY ALL DIMENSIONS and clearances from ARCHITECTURAL, STRUCTURAL, shop and other appropriate drawing or at site. lay out and coordinate all work prior to installation to provide clearances required for operation, maintenance, and codes and verify non-interference with other work. DO NOT FABRICATE PRIOR TO VERIFICATION OF CLEARANCE FOR ALL TRADES. READ SPECIFICATIONS.

BASEMENT FLOOR PLAN - HVAC
 SCALE: 1/8" = 1'-0"

FINAL CONSTRUCTION DOCUMENTS

A/E FIRM PRIME: KENNETH HAHN ARCHITECTS, INC. OMAHA, NE. SUBCONTRACTOR: ALVINE ENGINEERING OMAHA, NE.	DESIGNED: MRG	SUB SHEET NO. M2-1	TITLE OF SHEET BASEMENT FLOOR PLAN - HVAC BUCKSTAFF BATHHOUSE HVAC HOT SPRINGS NATIONAL PARK HOT SPRINGS, AK	DRAWING NO. XXX/XXXX
	DRAWN BY: MRG			PMIS NO. 177425
	TECH. REVIEW: BAH			SHEET
	DATE: 2/15/2024			19 OF 60

February 16, 2024 7:23am MC: L.dwg impregio