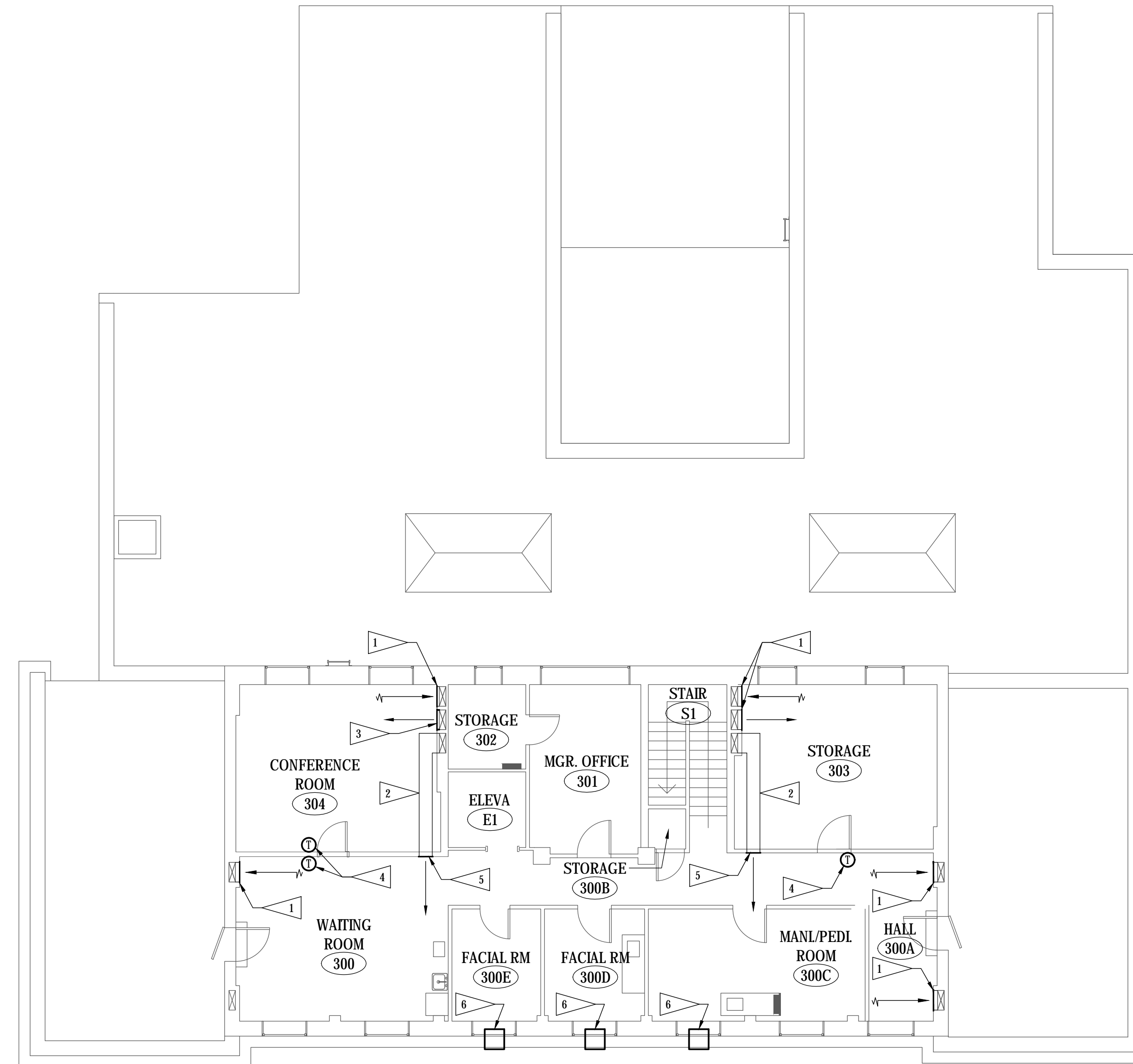


FLAG NOTES

- 1 EXISTING GRILLE AT WALL TO REMAIN.
- 2 EXISTING VENTILATION AIR DUCTWORK IN HORIZONTAL SOFFIT TO REMAIN.
- 3 CONTRACTOR TO REMOVE EXISTING GRILLE AND PROVIDE NEW OPENING IN WALL TO VENTILATION SHAFT AT A LOWER ELEVATION ALLOWING NEW DUCTWORK TO BE INSTALLED AT EXISTING SHAFT WALL AT SAME ELEVATION AS GRILLE BEING REMOVED AND RELOCATED. SEE THIRD FLOOR HVAC FLOOR PLAN ON SHEET M2-4 FOR NEW WORK.
- 4 REMOVE EXISTING CONTROL THERMOSTAT SHOWN BOLD COMPLETE. REMOVE CONTROL AIR TUBING OR WIRING BACK INTO WALL AND ABANDON IN PLACE.
- 5 REMOVE EXISTING SIDEWALL VENTILATION AIR DISCHARGE GRILLES AT CORRIDOR SIDE OF WALL. DUCTWORK SERVING GRILLES WILL REMAIN AND BE REUSED.
- 6 REMOVE EXISTING WINDOW AIR CONDITIONING UNIT AND TURN OVER TO GOVERNMENTS REPRESENTATIVE. COORDINATE WITH GENERAL CONTRACTOR WINDOW GLASS THAT NEEDS TO BE PROVIDED ONCE WINDOW AIR CONDITIONING UNITS HAVE BEEN REMOVED.



THIRD FLOOR PLAN - MECHANICAL DEMOLITION
 SCALE: 1/8" = 1'-0"

© COPYRIGHT 2024 AEF 20239955
 Permission to reproduce all or part of this drawing is hereby granted solely for the limited purpose of construction of this project or archiving. Unauthorized copying, disclosure or construction use without written permission of Alvine Engineering is prohibited by copyright law.
NOTE:
 DO NOT SCALE DRAWINGS. VERIFY ALL DIMENSIONS and clearances from ARCHITECTURAL, STRUCTURAL, shop and other appropriate drawing or at site. lay out and coordinate all work prior to installation to provide clearances required for operation, maintenance, and codes and verify non-interference with other work. DO NOT FABRICATE PRIOR TO VERIFICATION OF CLEARANCE FOR ALL TRADES. READ SPECIFICATIONS.

FINAL CONSTRUCTION DOCUMENTS

A/E FIRM PRIME: KENNETH HAHN ARCHITECTS, INC. OMAHA, NE. SUBCONTRACTOR: ALVINE ENGINEERING OMAHA, NE.	DESIGNED: MRG DRAWN BY: MRG TECH. REVIEW: BAH DATE: 2/15/2024	SUB SHEET NO. M1-4	TITLE OF SHEET THIRD FLOOR PLAN - MECHANICAL DEMOLITION BUCKSTAFF BATHHOUSE HVAC HOT SPRINGS NATIONAL PARK HOT SPRINGS, AK	DRAWING NO. XXX/XXXX PMIS NO. 177425 SHEET 17 OF 60
---	---	----------------------------------	---	--