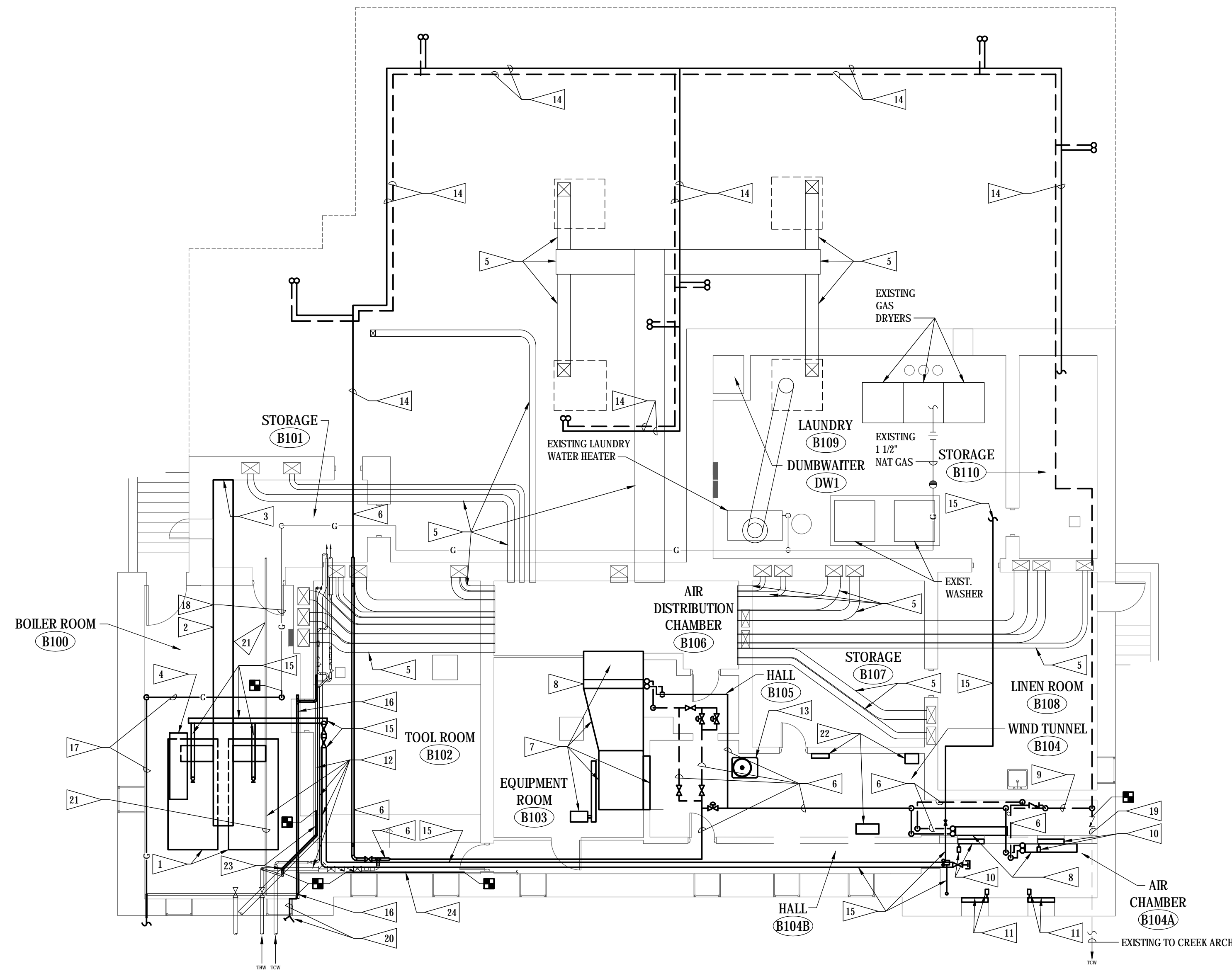


FLAG NOTES

- 1 REMOVE EXISTING BOILER COMPLETE INCLUDING ALL ASSOCIATED ABANDONED STEAM AND CONDENSATE RETURN PIPING COMPLETE SHOWN BOLD. VERIFY PIPING IN FIELD.
- 2 REMOVE EXISTING BOILER BREACHING SHOWN BOLD COMPLETE.
- 3 COORDINATE WITH GENERAL CONTRACTOR INFILL OF EXISTING REMAINING OPENING IN CHIMNEY WALL ONCE BREACHING IS REMOVED.
- 4 REMOVE ABANDONED TANK ABOVE NORTH BOILER SHOWN BOLD COMPLETE INCLUDING ASSOCIATED PIPING. PIPING NOT SHOWN FOR CLARITY.
- 5 EXISTING VENTILATION DUCTWORK SHOWN TO REMAIN AND BE REUSED.
- 6 REMOVE EXISTING 3" THERMAL HOT WATER PIPING SHOWN BOLD COMPLETE.
- 7 REMOVE EXISTING VENTILATION FAN SHOWN BOLD. COMPLETE INCLUDING BELT & GUARD AND FAN MOTOR.
- 8 REMOVE EXISTING HEAT COIL INCLUDING COIL BASE AND ASSOCIATED VENTILATION DUCTWORK SHOWN BOLD COMPLETE.
- 9 REMOVE EXISTING 3" THERMAL HOT WATER PIPING SHOWN BOLD. CAP REMAINING PIPING WHERE SHOWN.
- 10 REMOVE EXISTING DAMPER ASSEMBLIES IN WALL BELOW COIL SHOWN BOLD COMPLETE. REMOVE DAMPER ACTUATOR AND TEMPERATURE CONTROL AIR LINES AND DEVICE WIRING SERVING DAMPER ACTUATOR.
- 11 REMOVE EXISTING DAMPER ASSEMBLIES IN EXTERIOR WALL SHOWN BOLD COMPLETE. REMOVE DAMPER ACTUATOR AND TEMPERATURE CONTROL AIR LINES AND DEVICE WIRING SERVING DAMPER ACTUATOR.
- 12 EXISTING THERMAL HOT AND THERMAL COLD WATER PIPING SHALL REMAIN.
- 13 REMOVE EXISTING CONDENSING UNIT SHOWN BOLD SERVING GROUND FLOOR FURNACE. TURN OVER REMOVED EQUIPMENT TO GOVERNMENT'S REPRESENTATIVE.
- 14 REMOVE EXISTING THERMAL HOT WATER SUPPLY AND RETURN PIPING IN CRAWLSPACE SHOWN DARK WHICH SERVES EXISTING FAN COIL UNIT SYSTEM. PIPING INDICATED ON PLAN IS DIAGRAMMATIC. CONTRACTOR SHALL VERIFY PIPE SIZES AND EXTENT OF EXISTING ROUTING IN FIELD.
- 15 REMOVE ABANDONED 6" STEAM PIPING INCLUDING VALVES AND FITTINGS. SHOWN DARK COMPLETE.
- 16 REMOVE ABANDONED 2" WATER PIPING SHOWN BOLD BACK TO MAIN AND CAP. FIELD VERIFY EXISTING CONDITIONS.
- 17 REMOVE EXISTING 2" NATURAL GAS PIPING SHOWN BOLD. REMOVE OUT TO EXISTING GAS METER LOCATED AT WEST SIDE OF BUILDING.
- 18 EXISTING 2" GAS PIPING TO REMAIN AND BE REUSED. CONTRACTOR TO VERIFY PIPE SIZE FOR RECONNECTION TO NEW GAS UTILITY PIPING.
- 19 EXISTING 3" THERMAL HOT WATER RETURN TO CREEK OUTSIDE OF BUILDING TO REMAIN AND BE REUSED.
- 20 REMOVE EXTERIOR HOSE BIBB AND WATER LINE SERVING HOSE BIBB BACK TO MAIN AND CAP. FIELD VERIFY EXISTING CONDITIONS.
- 21 EXISTING COLD WATER LINE SHALL BE REMOVED AND RELOCATED WITH NEW LOCATION TO BE DETERMINED IN THE FIELD. COORDINATE RELOCATING THIS LINE BASED ON FINAL DUCTWORK AND PIPING TO BE INSTALLED THROUGH EXISTING BOILER ROOM. FINAL LOCATION OF RELOCATED WATER LINE SHALL BE MADE ONCE DUCTWORK AND PIPING IS INSTALLED IN SPACE.
- 22 REMOVE EXISTING PNEUMATIC TEMPERATURE CONTROL AIR COMPRESSOR, CONTROL AIR REFRIGERATED AIR DRYER AND EXISTING PNEUMATIC TEMPERATURE CONTROL PANEL COMPLETE INCLUDING CONTROL WIRING AND CONTROL AIR LINES SHOWN BOLD.
- 23 REMOVE PORTION OF EXISTING 2" THERMAL HOT WATER PIPING SHOWN BOLD TO MAKE ROOM FOR NEW HVAC DUCTWORK AT EXISTING WALL OPENING AT WEST END OF ROOM.
- 24 REMOVE PORTION OF EXISTING 3/4" COLD WATER PIPING SHOWN BOLD.



© COPYRIGHT 2024 AEF 20239955
 Permission to reproduce all or part of this drawing is hereby granted solely for the limited purpose of construction of this project or archiving. Unauthorized copying, disclosure or construction use without written permission of Alvine Engineering is prohibited by copyright law.
NOTE:
 DO NOT SCALE DRAWINGS. VERIFY ALL DIMENSIONS and clearances from ARCHITECTURAL, STRUCTURAL, shop and other appropriate drawing or at site. lay out and coordinate all work prior to installation to provide clearances required for operation, maintenance, and codes and verify non-interference with other work. DO NOT FABRICATE PRIOR TO VERIFICATION OF CLEARANCE FOR ALL TRADES. READ SPECIFICATIONS.

BASEMENT FLOOR PLAN - MECHANICAL DEMOLITION

SCALE: 1/8" = 1'-0"

FINAL CONSTRUCTION DOCUMENTS

A/E FIRM PRIME: KENNETH HAHN ARCHITECTS, INC. OMAHA, NE. SUBCONTRACTOR: ALVINE ENGINEERING OMAHA, NE.	DESIGNED: MRG	SUB SHEET NO. M1-1	TITLE OF SHEET	DRAWING NO.
	DRAWN BY: MRG		BASEMENT FLOOR PLAN - MECHANICAL DEMOLITION BUCKSTAFF BATHHOUSE HVAC HOT SPRINGS NATIONAL PARK HOT SPRINGS, AK	XXX/XXXX
	TECH. REVIEW: BAH			PMIS NO. 177425
	DATE: 2/15/2024			SHEET 14 OF 60