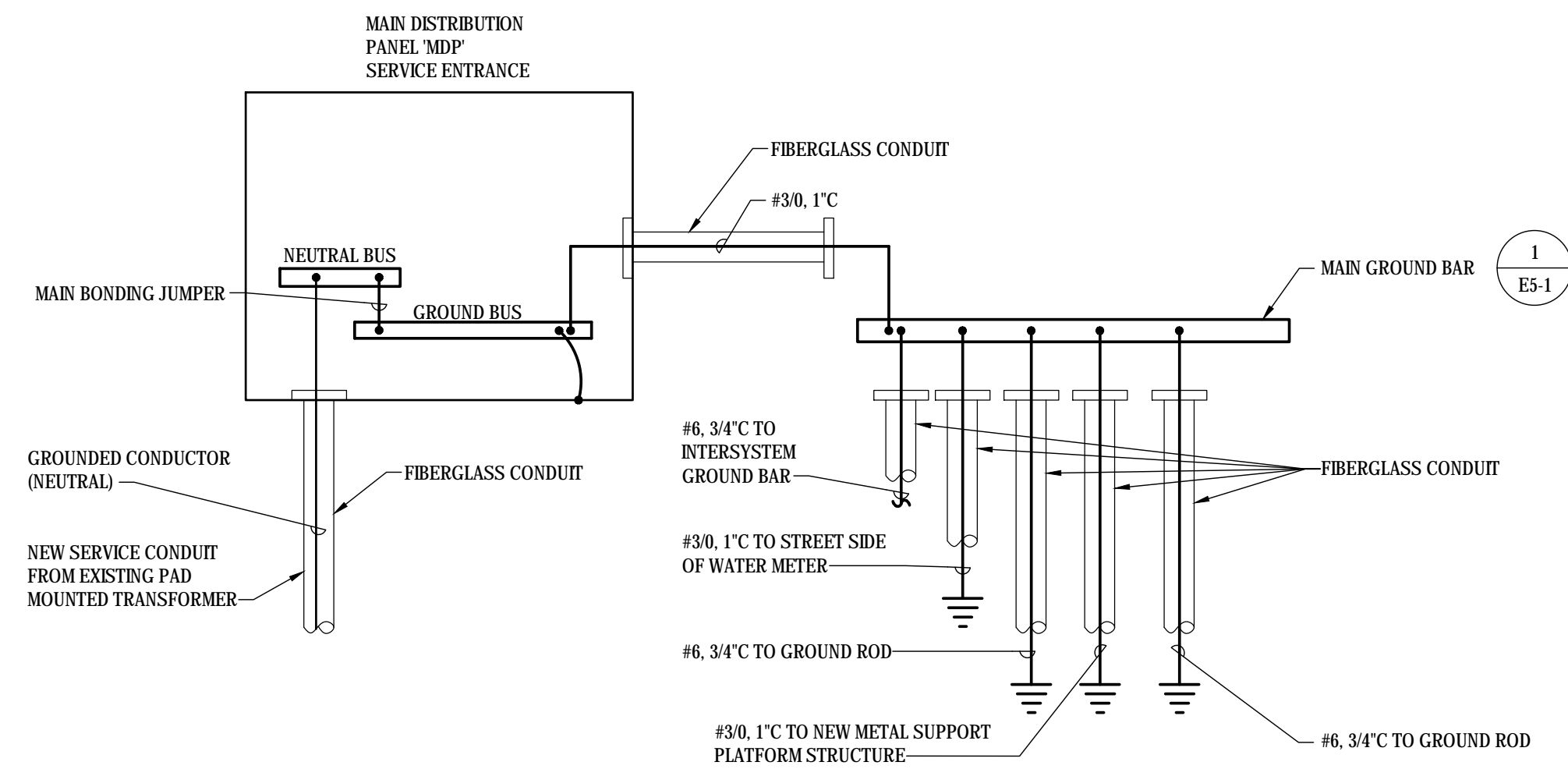


GROUND BAR SCHEDULE		
MARK	NOMINAL SIZE	ERICO CAT #
MAIN GROUND BAR	1/4" x 4" x 20"	EGBA14420CCT

GROUND BAR

NO SCALE

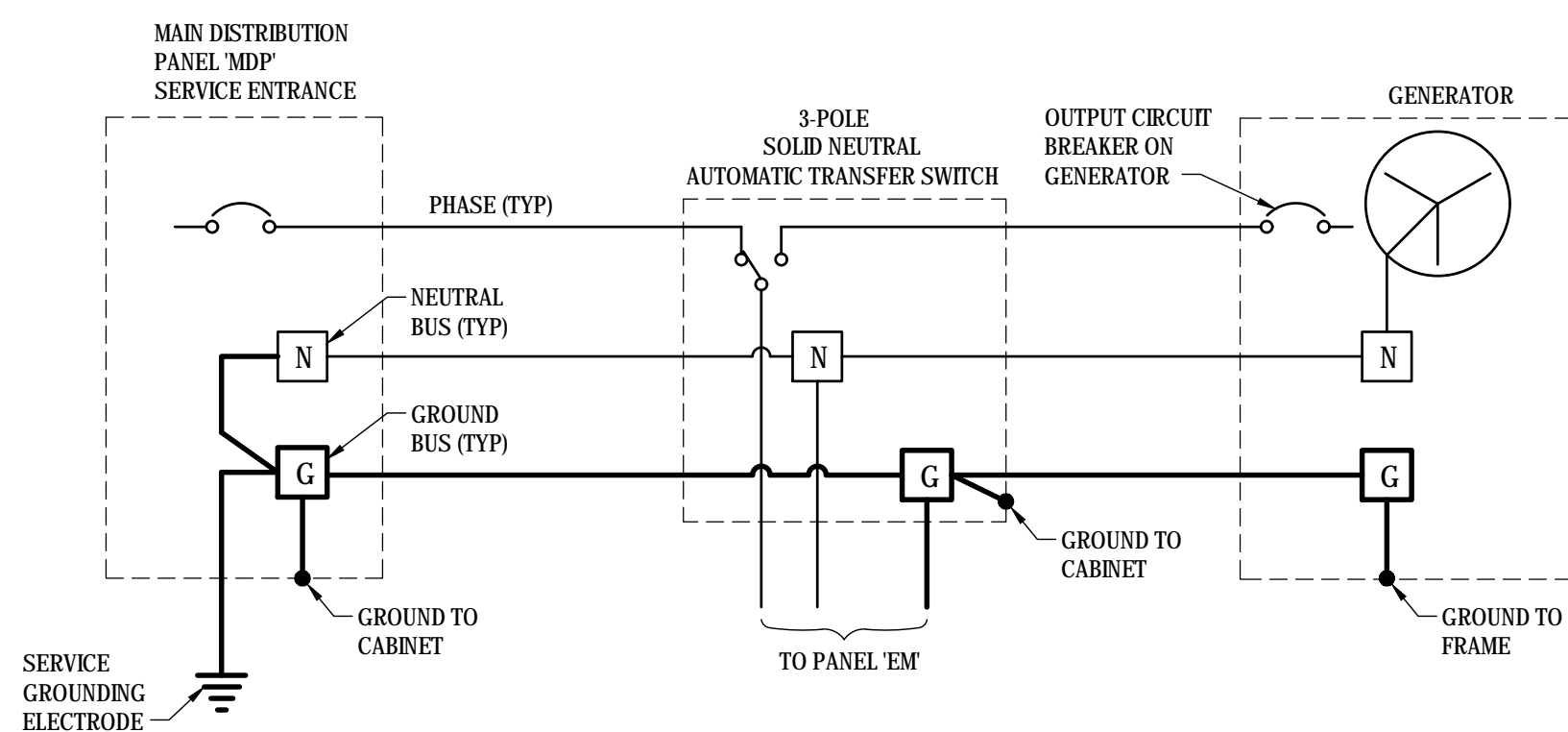
1
E5-1



SERVICE GROUNDING

NO SCALE

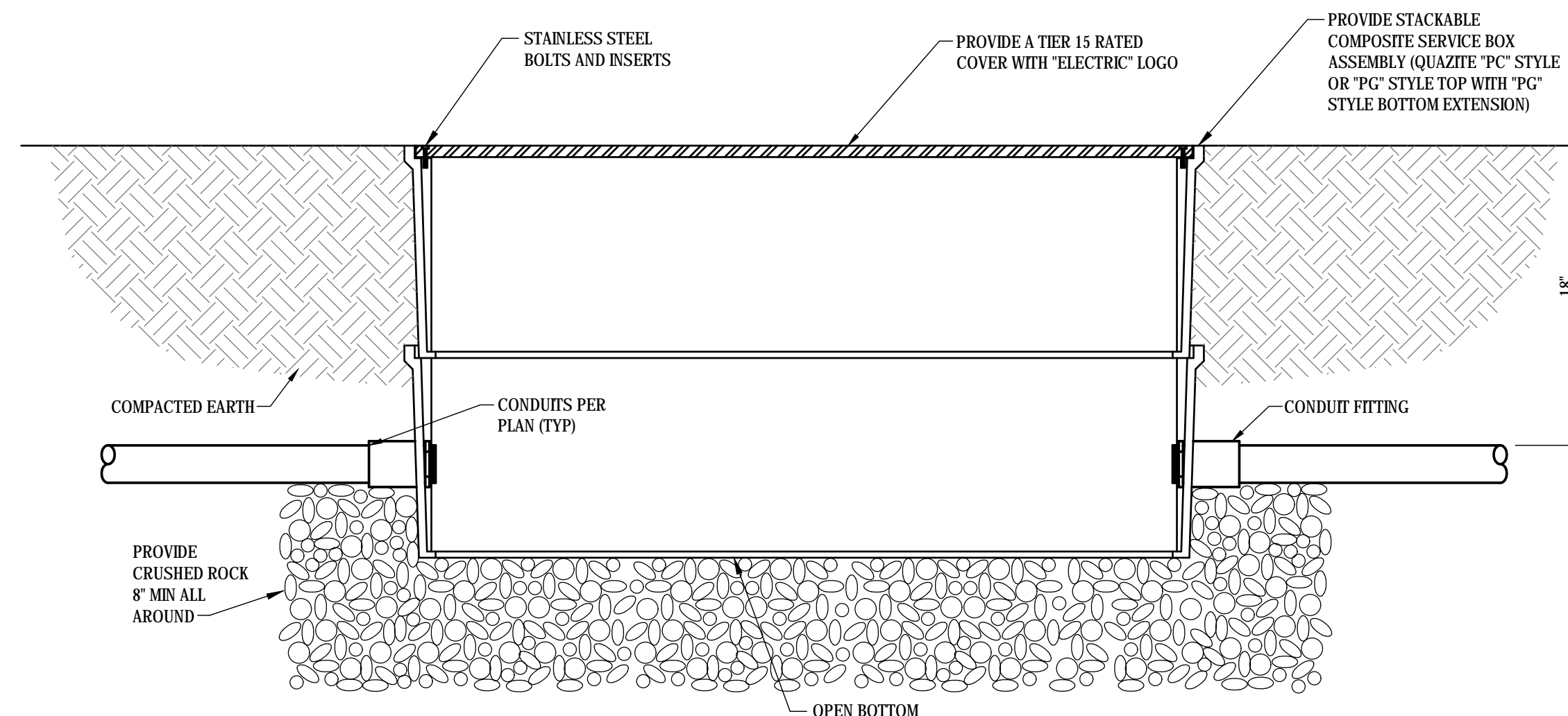
2
E5-1



GENERATOR GROUNDING WITH 3-POLE A.T.S.

NO SCALE

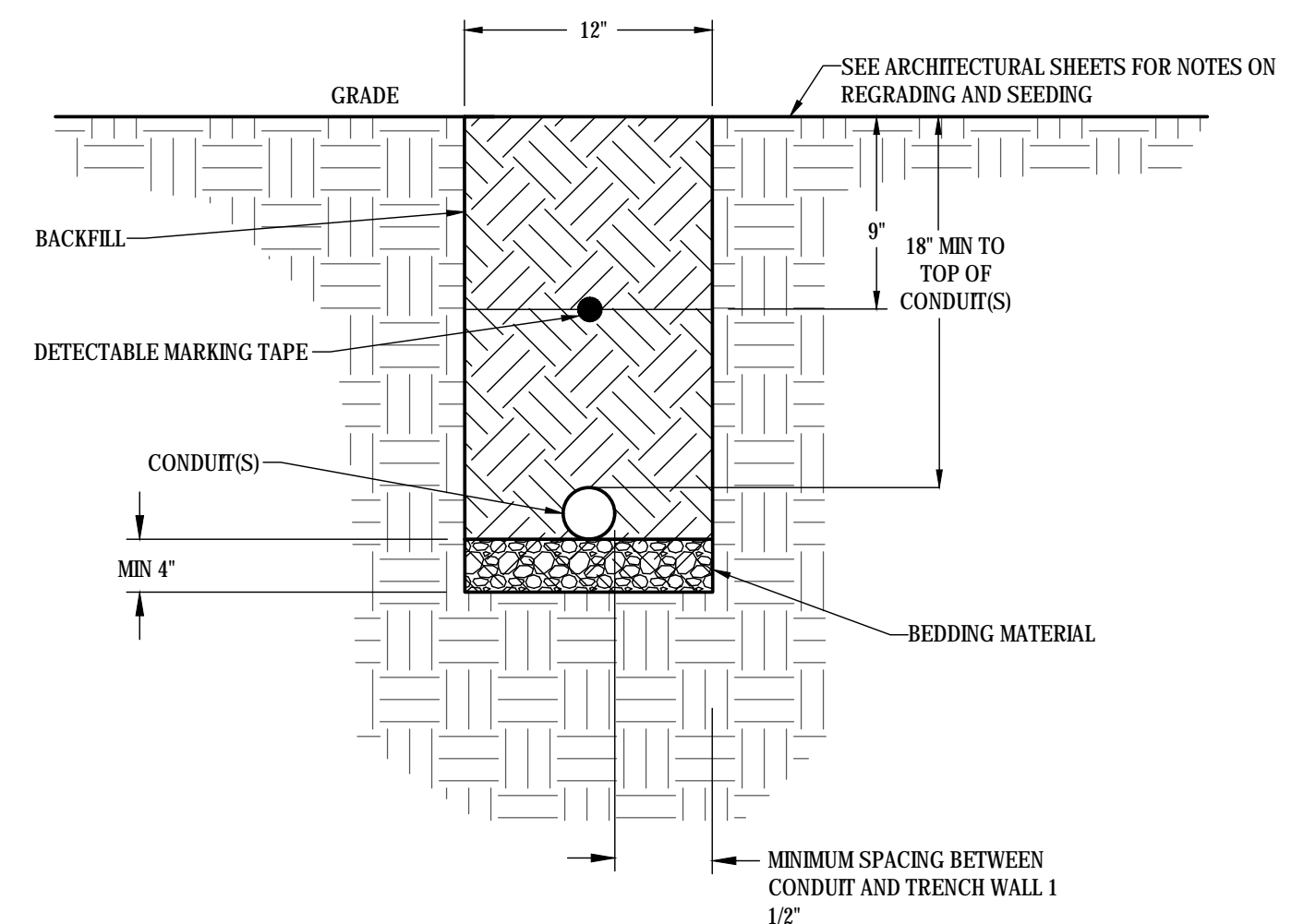
3
E5-1



PULLBOX

NO SCALE

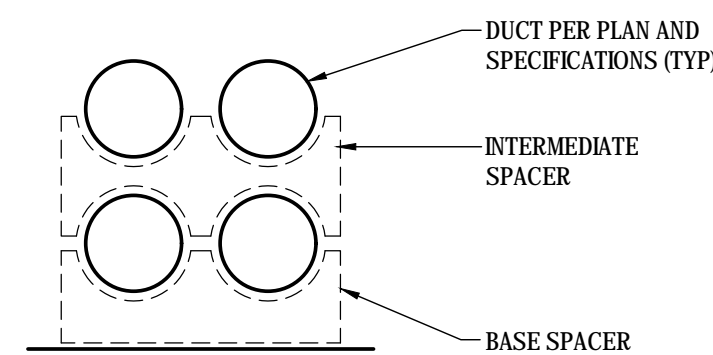
4
E5-1



TRENCH DETAIL

NO SCALE

5
E5-1

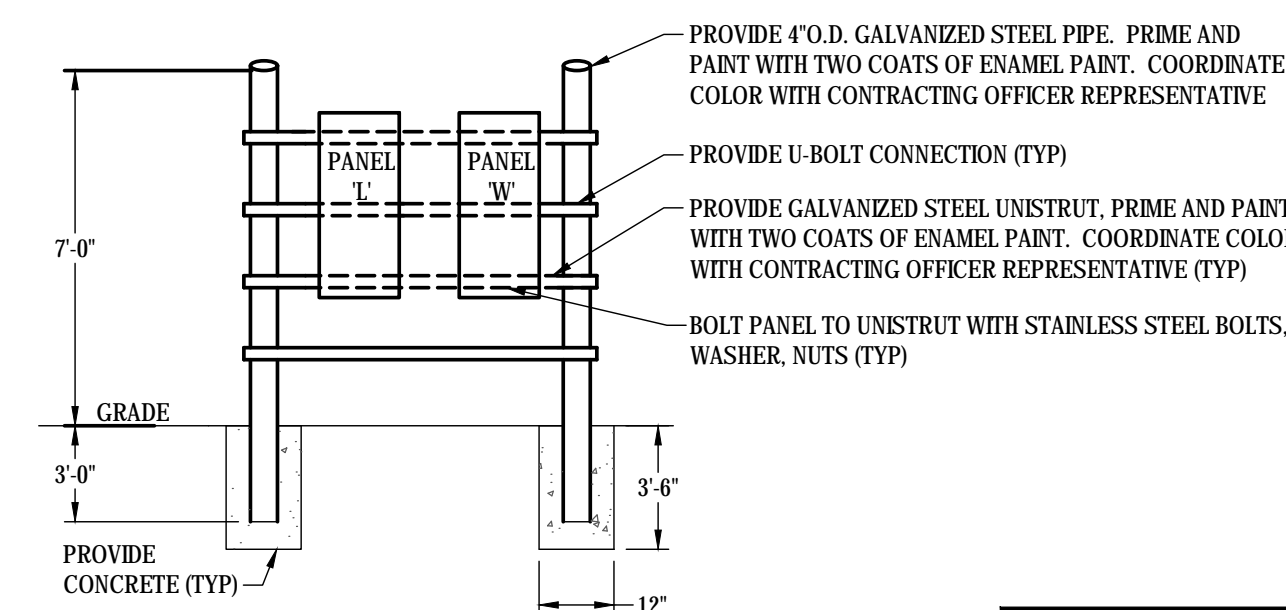


UNDERGROUND SECONDARY ELECTRICAL CONDUIT BANK

NO SCALE

- NOTES:
1. DETAIL INDICATES GENERAL LAYOUT OF BANKS. ADJUST AS REQUIRED FOR CONDUITS INSTALLED.
 2. PROVIDE NON-METALLIC CONDUIT SPACERS LOCATED A MAXIMUM OF 6 FEET ON CENTER. LOCATED AS REQUIRED BY NEC TABLE 352.30.
 3. PROVIDE MARKER TAPE ABOVE CONDUIT BANK. SEE SPECIFICATIONS.

6
E5-1



PANEL MOUNTING DETAIL

NO SCALE

7
E5-1

A/E FIRM PRIME: KENNETH HAHN ARCHITECTS, INC. OMAHA, NE. SUBCONTRACTOR: ALVINE ENGINEERING OMAHA, NE.	DESIGNED: RCF	SUB SHEET NO. E5-1	TITLE OF SHEET ELECTRICAL DETAILS BUCKSTAFF BATHHOUSE HVAC HOT SPRINGS NATIONAL PARK HOT SPRINGS, AK	DRAWING NO. XXX/XXXX
	DRAWN BY: JAS			PMIS NO. 177425
	TECH. REVIEW: GAN			SHEET 48 OF 60
	DATE: 2/15/2024			

© COPYRIGHT 2024 A/E 20239955
 Permission to reproduce all or part of this drawing is hereby granted solely for the limited purpose of construction of this project or archiving. Unauthorized copying, disclosure or construction use without written permission of Alvine Engineering is prohibited by copyright law.
 NOTE:
 DO NOT SCALE DRAWINGS. VERIFY ALL DIMENSIONS and clearances from ARCHITECTURAL, STRUCTURAL, shop and other appropriate drawing or at site. lay out and coordinate all work prior to installation to provide clearances required for operation, maintenance, and codes and verify non-interference with other work. DO NOT FABRICATE PRIOR TO VERIFICATION OF CLEARANCE FOR ALL TRADES. READ SPECIFICATIONS.

FINAL CONSTRUCTION DOCUMENTS