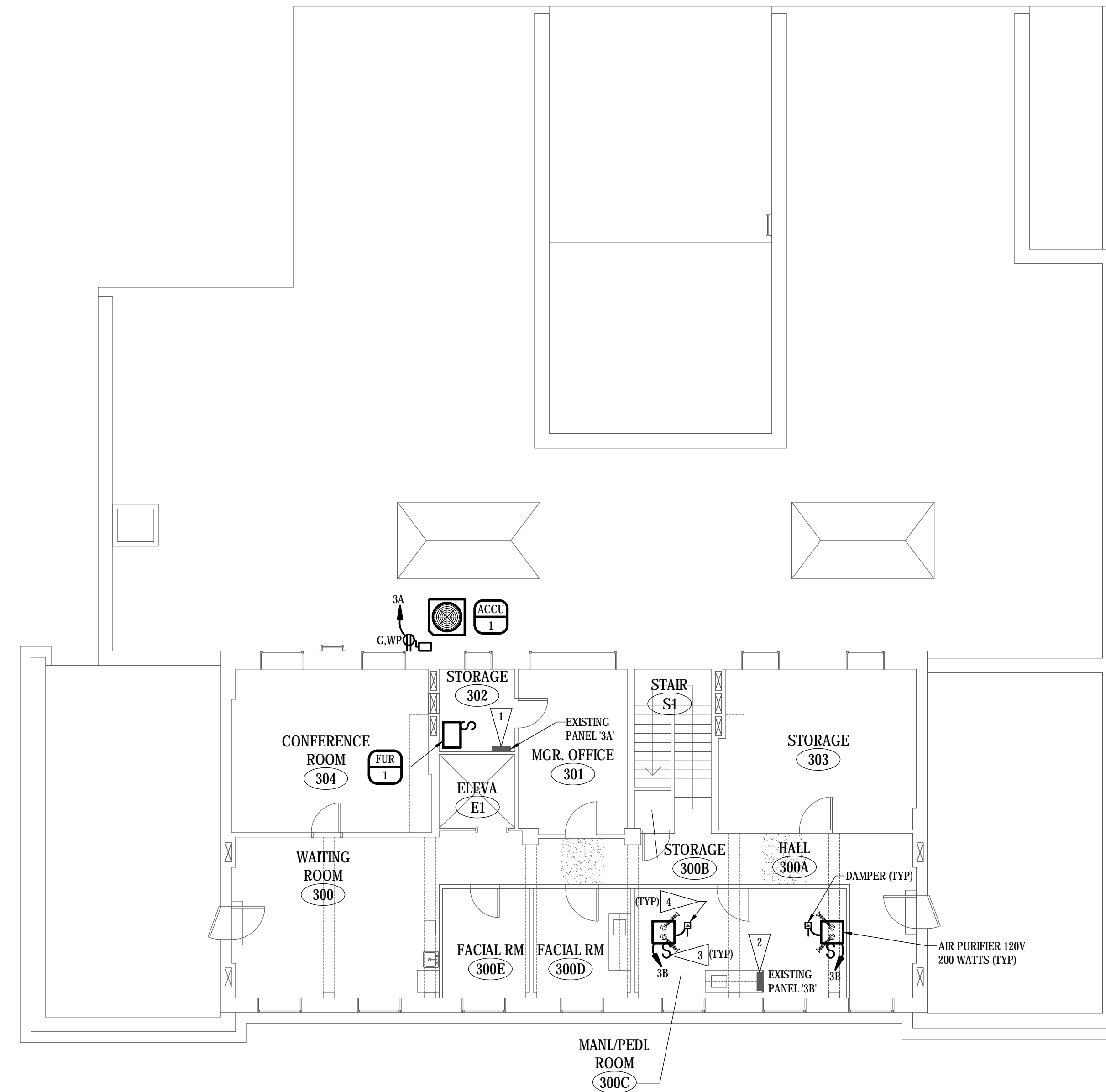


**FLAG NOTES**

- 1 PROVIDE THE FOLLOWING NEW BREAKERS: 1-20/1, 1-45/2.
- 2 PROVIDE THE FOLLOWING NEW BREAKERS: 2-20/1.
- 3 PROVIDE A TOGGLE SWITCH DISCONNECT.
- 4 PROVIDE 120V INTERLOCK WIRING TO DAMPER.



**THIRD FLOOR PLAN - POWER**  
 SCALE: 1/8" = 1'-0"

© COPYRIGHT 2024 AEF 20239955  
 Permission to reproduce all or part of this drawing is hereby granted solely for the limited purpose of construction of this project or archiving. Unauthorized copying, disclosure or construction use without written permission of Alvine Engineering is prohibited by copyright law.  
**NOTE:**  
 DO NOT SCALE DRAWINGS. VERIFY ALL DIMENSIONS and clearances from ARCHITECTURAL, STRUCTURAL, shop and other appropriate drawing or at site. lay out and coordinate all work prior to installation to provide clearances required for operation, maintenance, and codes and verify non-interference with other work. DO NOT FABRICATE PRIOR TO VERIFICATION OF CLEARANCE FOR ALL TRADES. READ SPECIFICATIONS.

FINAL CONSTRUCTION DOCUMENTS

A/E FIRM PRIME: KENNETH HAHN ARCHITECTS, INC. OMAHA, NE. SUBCONTRACTOR: ALVINE ENGINEERING OMAHA, NE.	DESIGNED: RCF	SUB SHEET NO.  <b>E3-4</b>	TITLE OF SHEET  <b>THIRD FLOOR PLAN - POWER</b>  BUCKSTAFF BATHHOUSE HVAC HOT SPRINGS NATIONAL PARK HOT SPRINGS, AK	DRAWING NO. XXX/XXXX
	DRAWN BY: JAS			PMIS NO. 177425
	TECH. REVIEW: GAN			SHEET
	DATE: 2/15/2024			46 OF 60