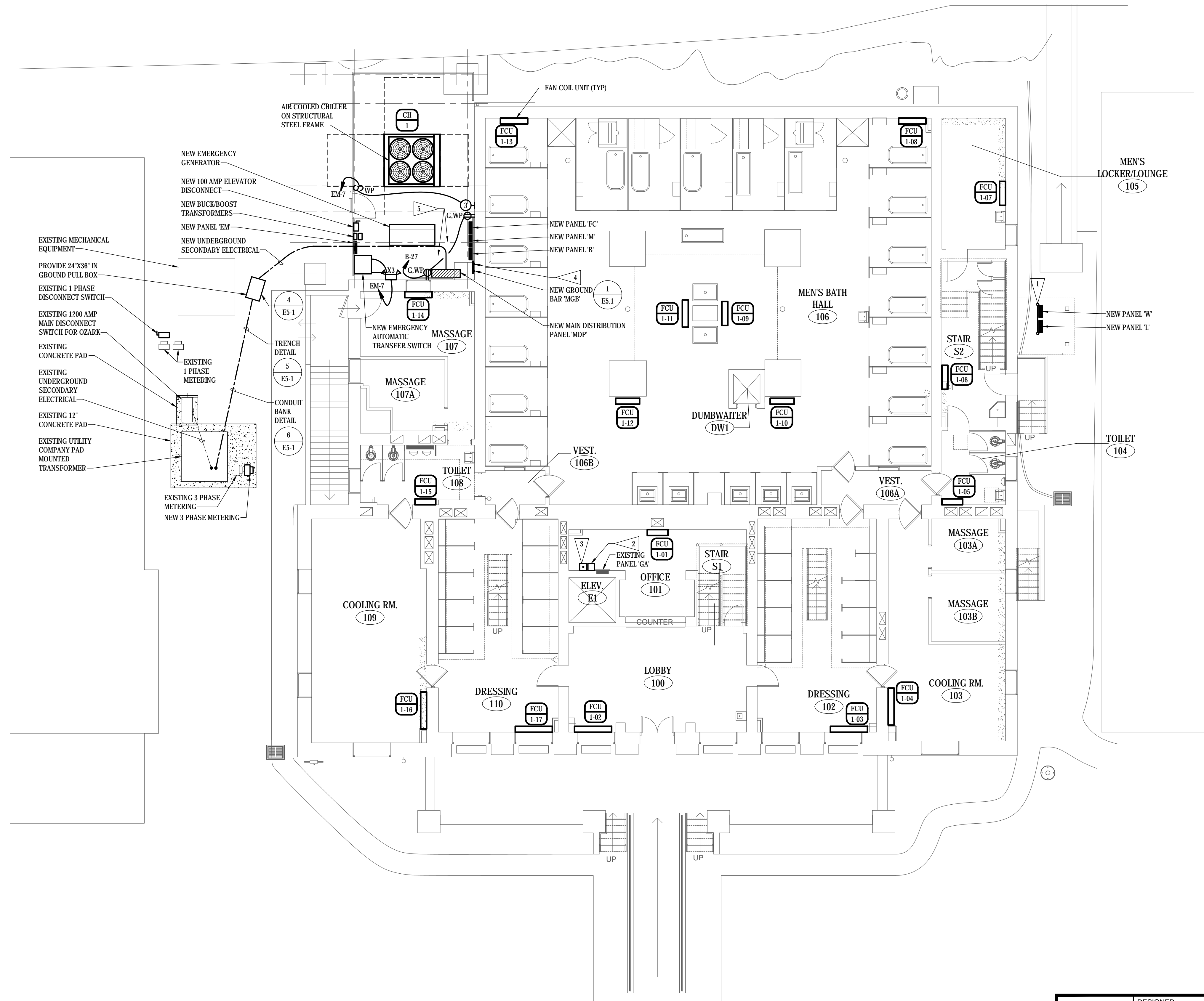


FLAG NOTES

- 1 MOUNT ON GROUND MOUNTED UNISTRUT FRAMEWORK. SEE DETAIL 7/E5-1.
- 2 REMOTE GENERATOR STATUS ANNUNCIATOR PANEL.
- 3 REMOTE GENERATOR EMERGENCY STOP SWITCH.
- 4 PROVIDE NEMA 3R ENCLOSURE AROUND GROUND BAR.
- 5 PROVIDE MINIMUM OF 3'-0" BETWEEN GENERATOR AND ELECTRICAL PANELS.



GROUND FLOOR PLAN - POWER
SCALE: 1/8" = 1'-0"

© COPYRIGHT 2024 AEF 20239955
 Permission to reproduce all or part of this drawing is hereby granted solely for the limited purpose of construction of this project or archiving. Unauthorized copying, disclosure or construction use without written permission of Alvine Engineering is prohibited by copyright law.
NOTE:
 DO NOT SCALE DRAWINGS. VERIFY ALL DIMENSIONS and clearances from ARCHITECTURAL, STRUCTURAL, shop and other appropriate drawing or at site. lay out and coordinate all work prior to installation to provide clearances required for operation, maintenance, and codes and verify non-interference with other work. DO NOT FABRICATE PRIOR TO VERIFICATION OF CLEARANCE FOR ALL TRADES. READ SPECIFICATIONS.

FINAL CONSTRUCTION DOCUMENTS

A/E FIRM PRIME: KENNETH HAHN ARCHITECTS, INC. OMAHA, NE. SUBCONTRACTOR: ALVINE ENGINEERING OMAHA, NE.	DESIGNED: RCF DRAWN BY: JAS TECH. REVIEW: GAN DATE: 2/15/2024	SUB SHEET NO. <h2 style="text-align: center;">E3-2</h2>	TITLE OF SHEET <h3 style="margin: 0;">GROUND FLOOR PLAN - POWER</h3> BUCKSTAFF BATHHOUSE HVAC HOT SPRINGS NATIONAL PARK HOT SPRINGS, AK	DRAWING NO. XXX/XXXX PMIS NO. 177425 SHEET 44 OF 60
---	--	--	--	--

February 16, 2024, 11:04am 20239955_E3-1.dwg vjennemo