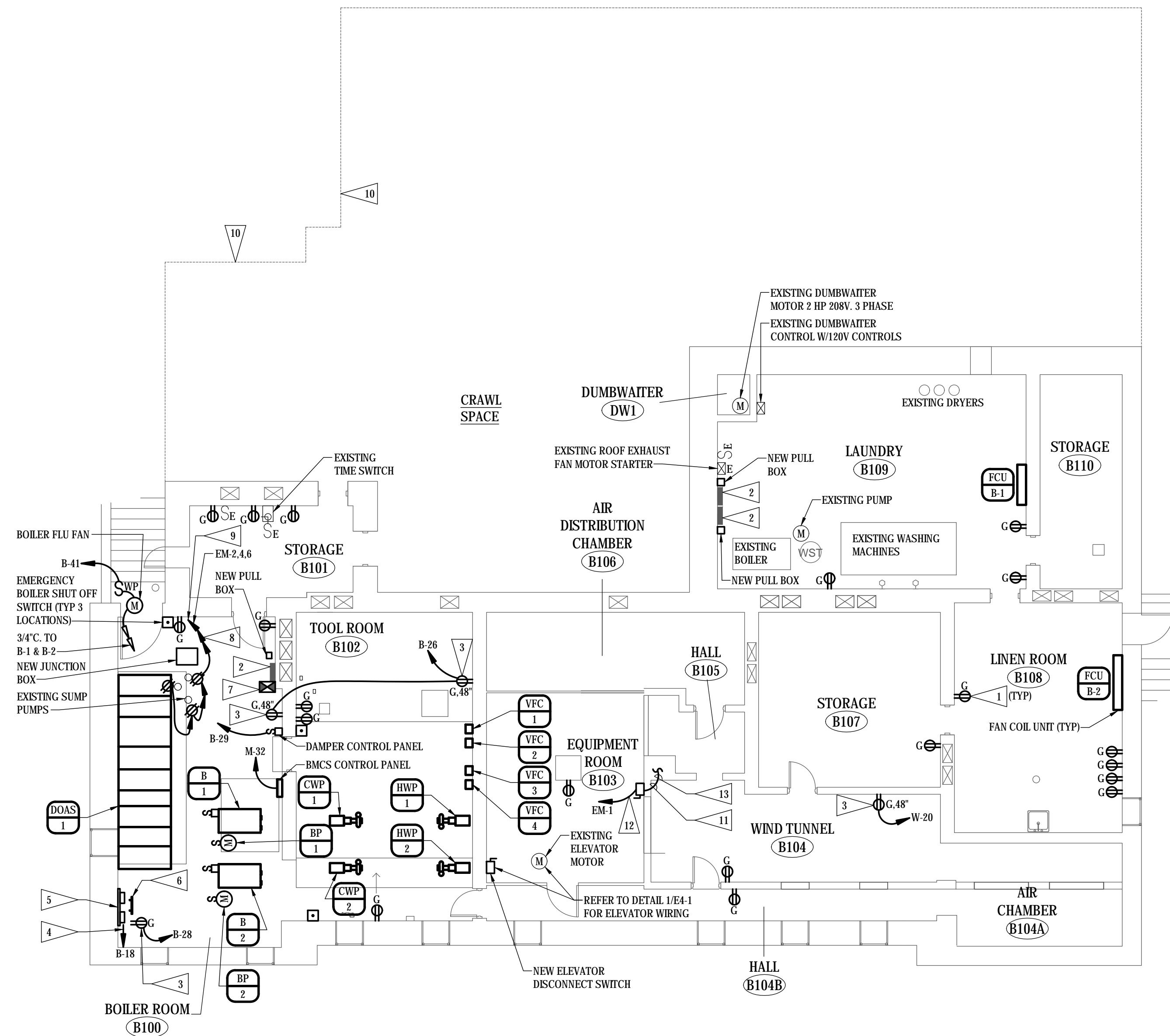


FLAG NOTES

- 1 PROVIDE NEW GFCI RECEPTACLE DEVICE AND COVERPLATE. CONNECT TO EXISTING WIRING.
- 2 ORIGINAL PANEL CONVERTED IN TO A JUNCTION BOX.
- 3 NEW GFCI RECEPTACLE IN NEW LOCATION.
- 4 RELOCATED TELEPHONE SERVICE PROVIDER INCOMING LINE. COORDINATE WITH TELEPHONE SERVICE PROVIDER COMPANY.
- 5 RELOCATED TELEPHONE TERMINAL BOARD, DEMARCATION EQUIPMENT, 110 BLOCKS, AND TELEPHONE LINES.
- 6 PROVIDE INTERSYSTEM GROUND BAR ARLINGTON CAT. NO. GB5-1 OR EQUIVALENT WITH #6 INSULATED GROUND WIRE IN 3/4" TO NEW MAIN GROUND BAR.
- 7 EXISTING CONTACTOR FOR RADIATORS. EXISTING WIRING TO RADIATORS TO REMAIN. PROVIDE NEW SUPPLY WIRING FROM NEW PANEL 'B'.
- 8 6 #10, 1 #10 GND IN 1".
- 9 ROUTE TO PANEL 'EM' CIRCUITS EM-2,4,6.
- 10 ROUTE NEW UNDERGROUND CONDUITS FROM NEW EXTERIOR ELECTRICAL GEAR THROUGH THE WALL INTO THE CRAWL SPACE ON THIS WALL. CORE DRILL THE WALL AND PROVIDE LINK SEALS AROUND EACH CONDUIT.
- 11 PROVIDE A 30 AMP, 1 POLE, FUSIBLE, DISCONNECT SWITCH. FUSED AT 20 AMPSES. PROVIDE LABEL "ELEVATOR CAB LIGHTING". COORDINATE MOUNTING LOCATION WITH CONTRACTING OFFICER OR CONTRACTING OFFICER REPRESENTATIVE.
- 12 2 #10, 1 #10 GND IN 3/4".
- 13 CONNECT TO EXISTING ELEVATOR LIGHTING CIRCUIT.



BASEMENT FLOOR PLAN - POWER
SCALE: 1/8" = 1'-0"

© COPYRIGHT 2024 AEF 20239955
 Permission to reproduce all or part of this drawing is hereby granted solely for the limited purpose of construction of this project or archiving. Unauthorized copying, disclosure or construction use without written permission of Alvine Engineering is prohibited by copyright law.
NOTE:
 DO NOT SCALE DRAWINGS. VERIFY ALL DIMENSIONS and clearances from ARCHITECTURAL, STRUCTURAL, shop and other appropriate drawing or at site. lay out and coordinate all work prior to installation to provide clearances required for operation, maintenance, and codes and verify non-interference with other work. DO NOT FABRICATE PRIOR TO VERIFICATION OF CLEARANCE FOR ALL TRADES. READ SPECIFICATIONS.

FINAL CONSTRUCTION DOCUMENTS

A/E FIRM PRIME: KENNETH HAHN ARCHITECTS, INC. OMAHA, NE. SUBCONTRACTOR: ALVINE ENGINEERING OMAHA, NE.	DESIGNED: RCF DRAWN BY: JAS TECH. REVIEW: GAN DATE: 2/15/2024	SUB SHEET NO. <div style="font-size: 2em; font-weight: bold; text-align: center;">E3-1</div>	TITLE OF SHEET <div style="font-size: 1.5em; font-weight: bold;">BASEMENT FLOOR PLAN - POWER</div> BUCKSTAFF BATHHOUSE HVAC HOT SPRINGS NATIONAL PARK HOT SPRINGS, AK	DRAWING NO. XXX/XXXX PMIS NO. 177425 SHEET 43 OF 60
---	--	---	--	--

February 16, 2024, 11:04am 20239955_E3-1.dwg vjg/eremo