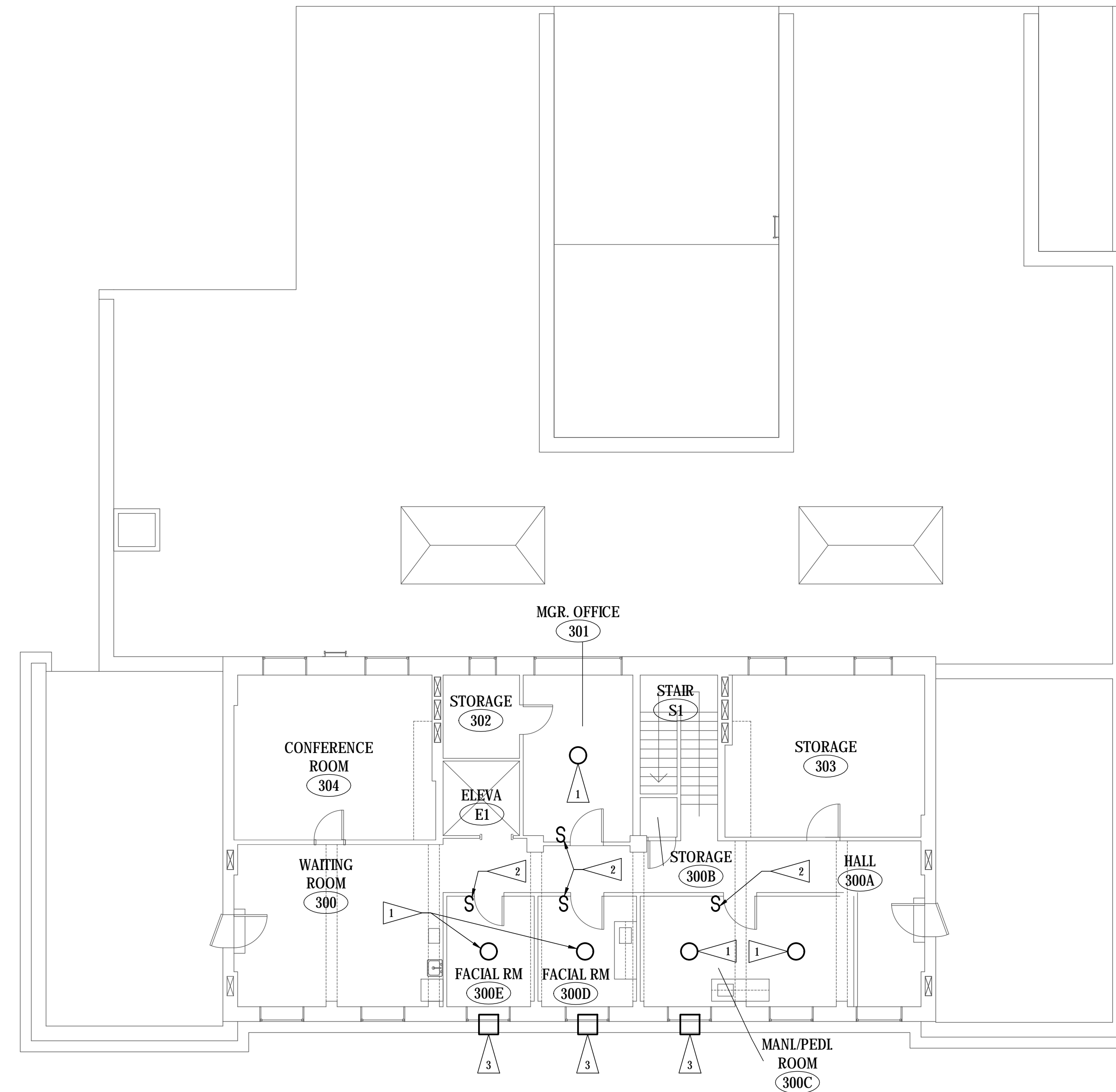


FLAG NOTES

- 1 REMOVE EXISTING LIGHTING FIXTURE AND WIRING.
- 2 REMOVE EXISTING SWITCH AND WIRING.
- 3 REMOVE WIRING TO EXISTING WINDOW AIR CONDITIONER.



THIRD FLOOR PLAN - ELECTRICAL DEMOLITION
 SCALE: 1/8" = 1'-0"

© COPYRIGHT 2024 AEF 20239955
 Permission to reproduce all or part of this drawing is hereby granted solely for the limited purpose of construction of this project or archiving. Unauthorized copying, disclosure or construction use without written permission of Alvine Engineering is prohibited by copyright law.
NOTE:
 DO NOT SCALE DRAWINGS. VERIFY ALL DIMENSIONS and clearances from ARCHITECTURAL, STRUCTURAL, shop and other appropriate drawing or at site. lay out and coordinate all work prior to installation to provide clearances required for operation, maintenance, and codes and verify non-interference with other work. DO NOT FABRICATE PRIOR TO VERIFICATION OF CLEARANCE FOR ALL TRADES. READ SPECIFICATIONS.

FINAL CONSTRUCTION DOCUMENTS

A/E FIRM PRIME: KENNETH HAHN ARCHITECTS, INC. OMAHA, NE. SUBCONTRACTOR: ALVINE ENGINEERING OMAHA, NE.	DESIGNED: RCF	E1-4	TITLE OF SHEET	DRAWING NO.
	DRAWN BY: JAS		THIRD FLOOR PLAN - ELECTRICAL DEMOLITION BUCKSTAFF BATHHOUSE HVAC HOT SPRINGS NATIONAL PARK HOT SPRINGS, AK	XXX/XXX
	TECH. REVIEW: GAN			PMIS NO. 177425
	DATE: 2/15/2024			SHEET 40 OF 60