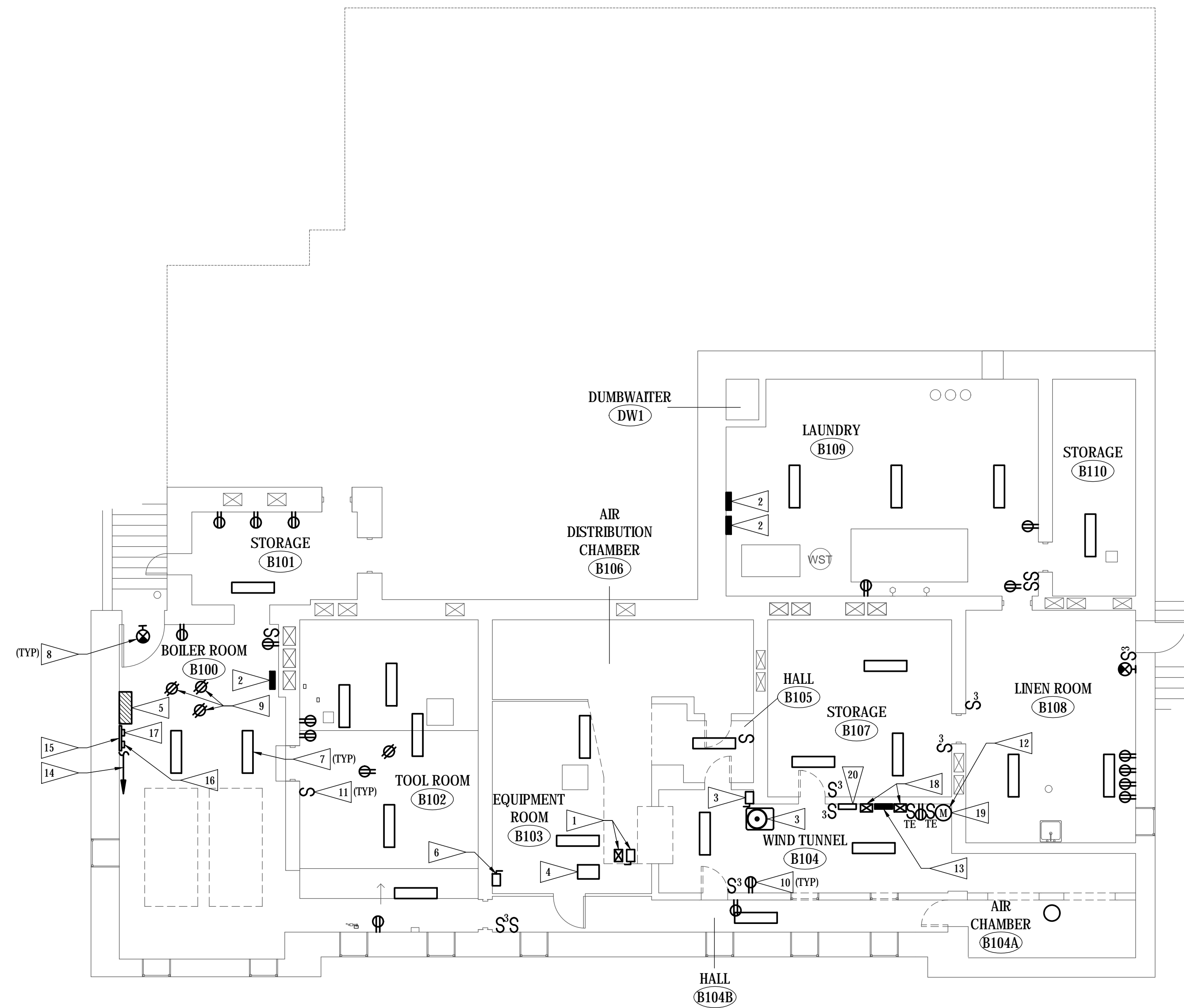


FLAG NOTES

- 1 REMOVE WIRING TO EXISTING VENTILATION FAN MOTOR STARTER AND DISCONNECT.
- 2 REMOVE LUGS, BUSBARS AND BREAKERS FROM EXISTING PANEL AND CONVERT INTO A JUNCTION BOX.
- 3 REMOVE WIRING TO EXISTING CONDENSING UNIT AND DISCONNECT.
- 4 REMOVE WIRING TO EXISTING VENTILATION FAN.
- 5 REMOVE EXISTING MAIN DISTRIBUTION PANEL.
- 6 REMOVE ELEVATOR DISCONNECT SWITCH.
- 7 REMOVE EXISTING LIGHTING FIXTURE AND WIRING.
- 8 REMOVE EXISTING EXIT LIGHT AND WIRING.
- 9 REMOVE EXISTING RECEPTACLES AND WIRING TO EXISTING SUMP PUMPS.
- 10 REMOVE EXISTING RECEPTACLE DEVICE. EXISTING BOX AND WIRING TO REMAIN FOR REUSE.
- 11 REMOVE EXISTING SWITCH AND WIRING.
- 12 REMOVE WIRING TO EXISTING AIR DRYER.
- 13 REMOVE EXISTING LOAD CENTER AND WIRING.
- 14 RELOCATE EXISTING INCOMING TELEPHONE SERVICE PROVIDER TELEPHONE LINE. COORDINATE WITH SERVICE PROVIDER.
- 15 RELOCATE EXISTING TELEPHONE TERMINAL BOARD.
- 16 RELOCATE EXISTING TELEPHONE DEMARCATION EQUIPMENT.
- 17 RELOCATE EXISTING TELEPHONE 110 BLOCK. RELOCATE EXISTING AND EXTEND EXISTING TELEPHONE WIRING.
- 18 REMOVE EXISTING MOTOR STARTERS AND WIRING.
- 19 REMOVE WIRING TO EXISTING TEMPERATURE CONTROL AIR COMPRESSOR.
- 20 REMOVE WIRING TO EXISTING TEMPERATURE CONTROL PANEL.



© COPYRIGHT 2024 AEF 20239955
 Permission to reproduce all or part of this drawing is hereby granted solely for the limited purpose of construction of this project or archiving. Unauthorized copying, disclosure or construction use without written permission of Alvine Engineering is prohibited by copyright law.
NOTE:
 DO NOT SCALE DRAWINGS. VERIFY ALL DIMENSIONS and clearances from ARCHITECTURAL, STRUCTURAL, shop and other appropriate drawing or at site. lay out and coordinate all work prior to installation to provide clearances required for operation, maintenance, and codes and verify non-interference with other work. DO NOT FABRICATE PRIOR TO VERIFICATION OF CLEARANCE FOR ALL TRADES. READ SPECIFICATIONS.

BASEMENT FLOOR PLAN - ELECTRICAL DEMOLITION
 SCALE: 1/8" = 1'-0"

FINAL CONSTRUCTION DOCUMENTS

A/E FIRM PRIME: KENNETH HAHN ARCHITECTS, INC. OMAHA, NE. SUBCONTRACTOR: ALVINE ENGINEERING OMAHA, NE.	DESIGNED: RCF	SUB SHEET NO. E1-1	TITLE OF SHEET BASEMENT FLOOR PLAN - ELECTRICAL DEMOLITION BUCKSTAFF BATHHOUSE HVAC HOT SPRINGS NATIONAL PARK HOT SPRINGS, AK	DRAWING NO. XXX/XXX PMIS NO. 177425
	DRAWN BY: JAS			
	TECH. REVIEW: GAN			
	DATE: 2/15/2024			
				SHEET 37 OF 60