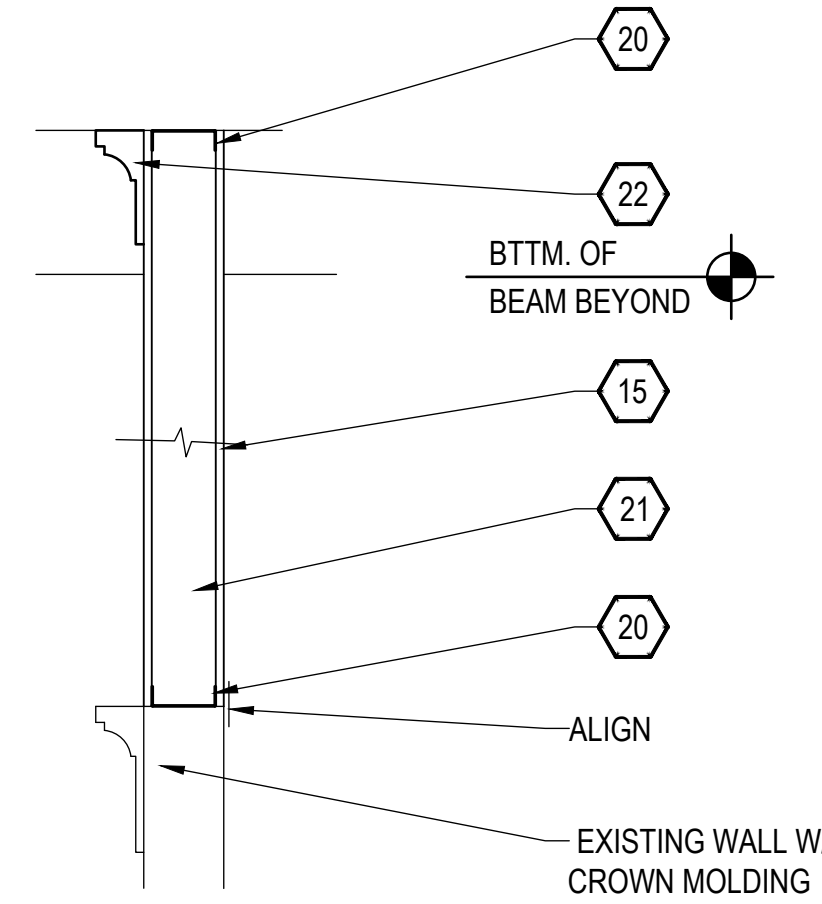
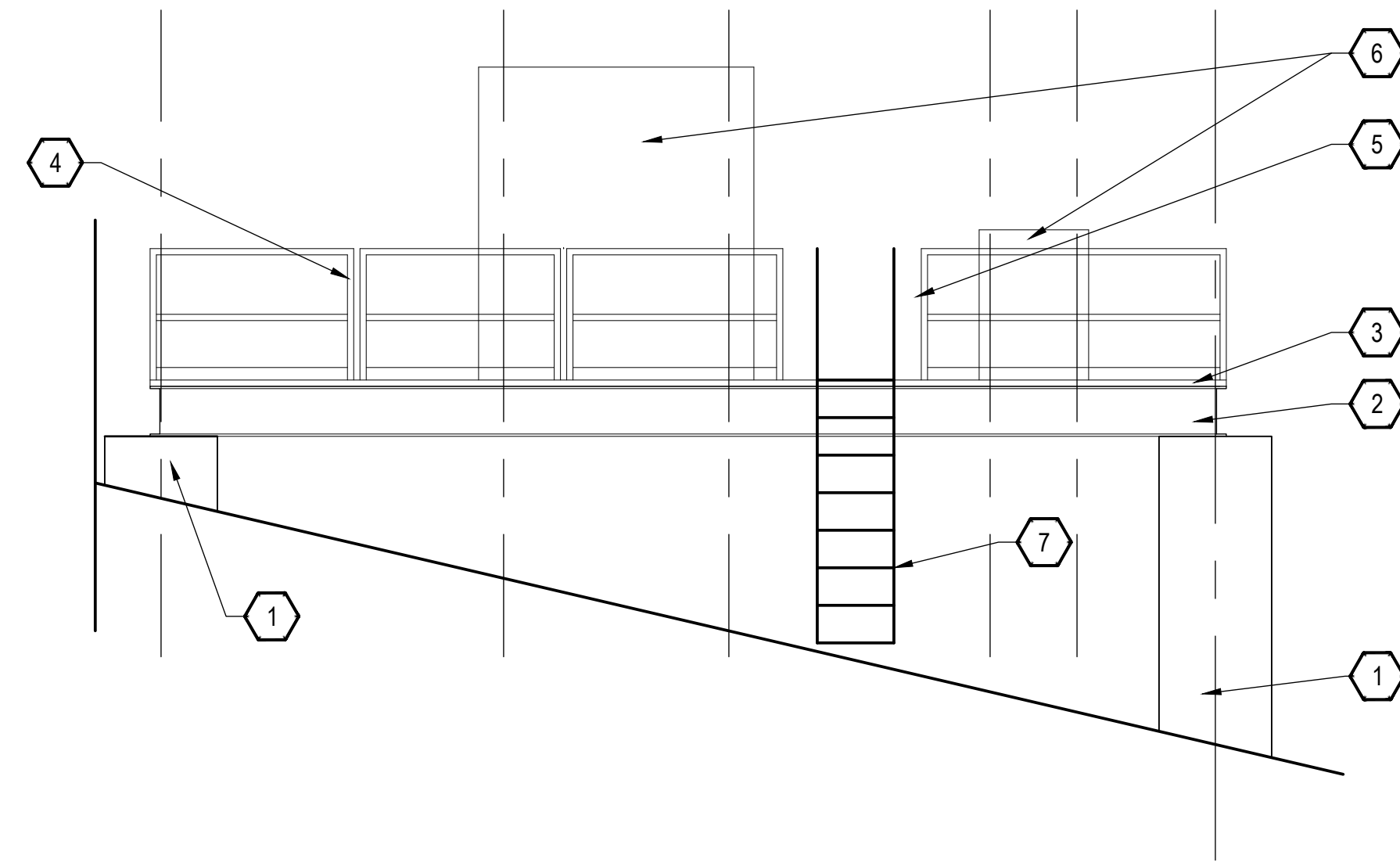


**9** WALL EXTENSION DETAIL  
NOT TO SCALE

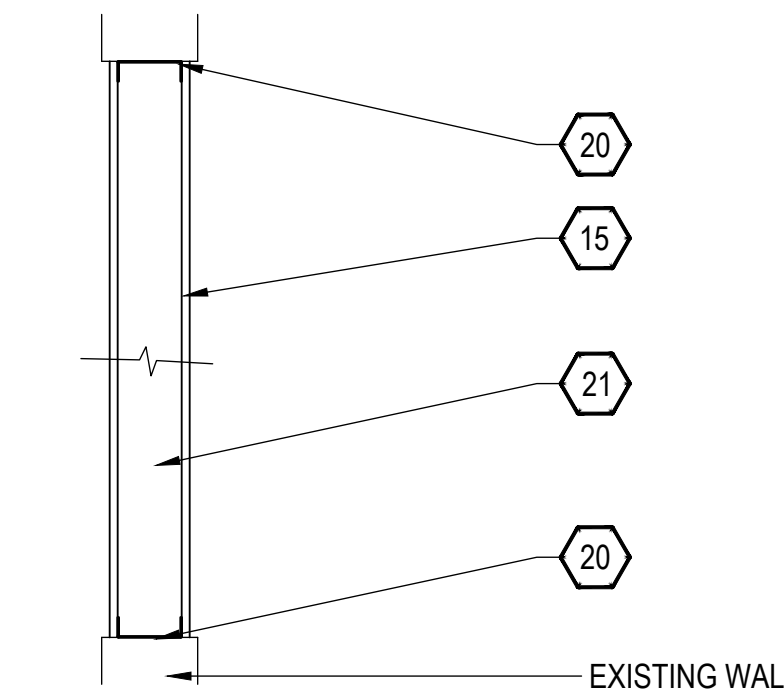


**6** WALL EXTENSION DETAIL  
NOT TO SCALE

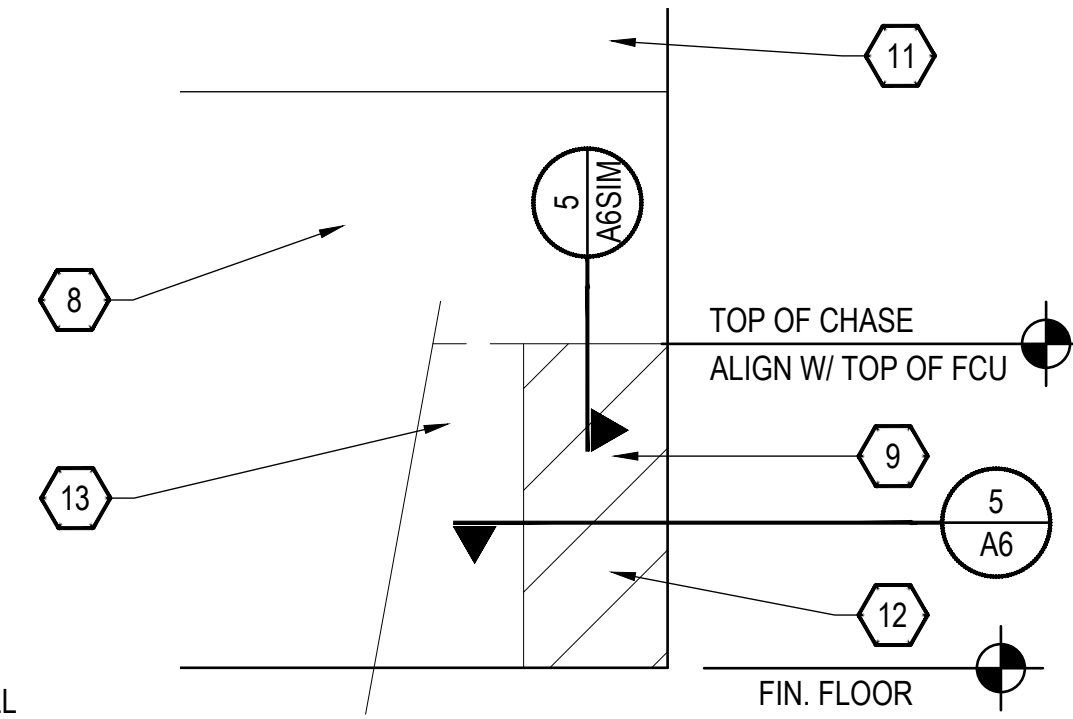


**1** ELEVATION- MECHANICAL PLATFORM  
SCALE: 1/4" = 1'-0"

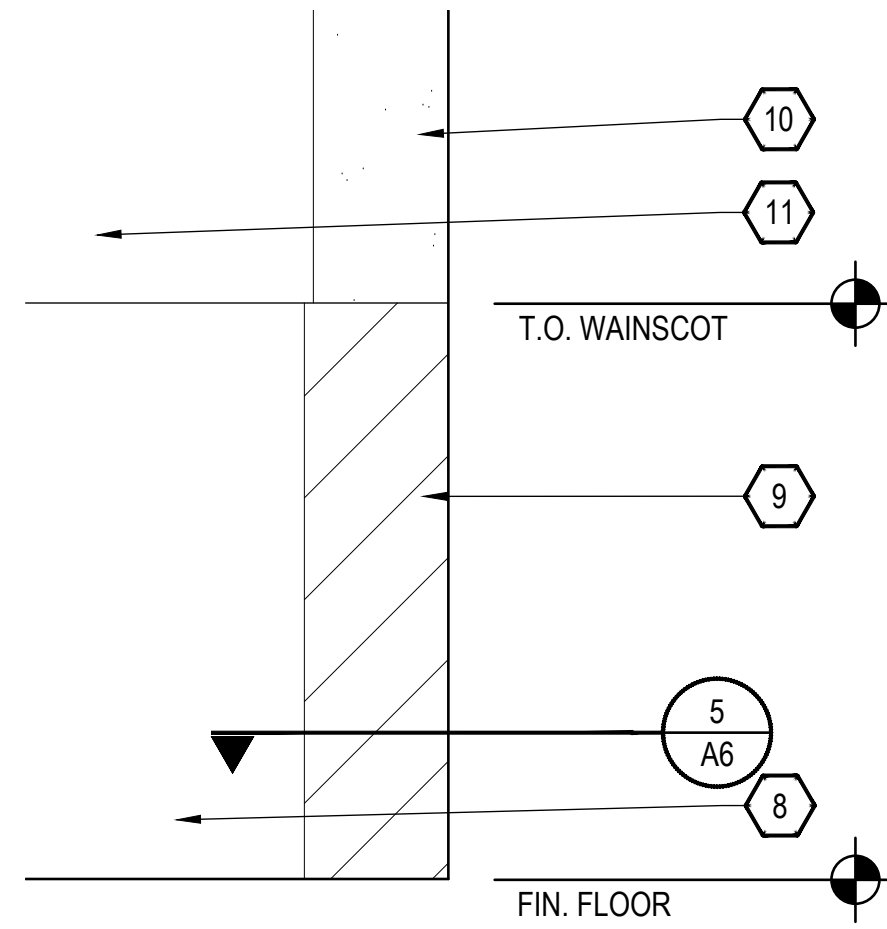
REMOVE UPPER CROWN MOLDING. PATCH AND REPAIR



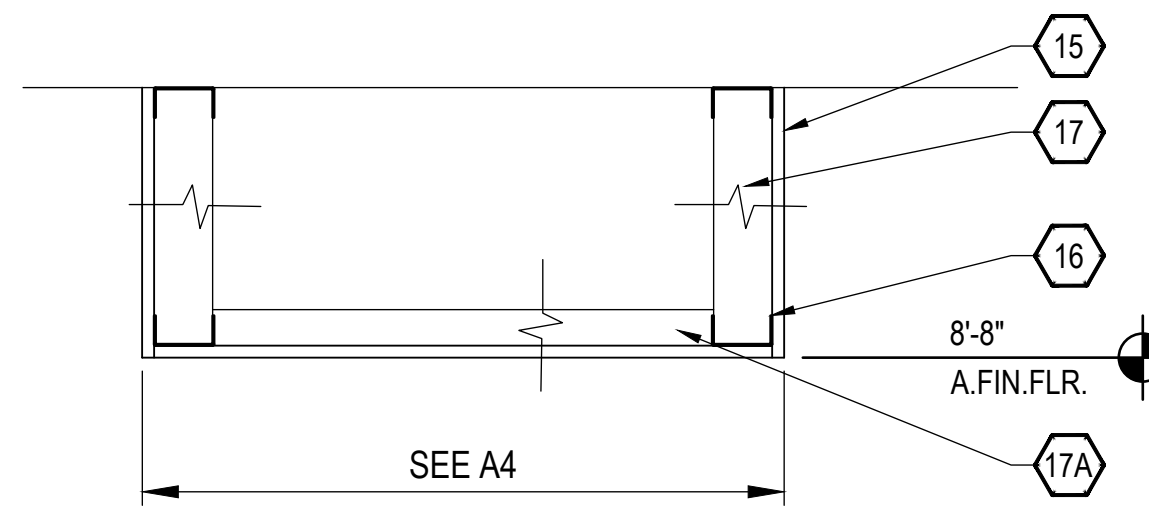
**7** INFILL DETAIL  
NOT TO SCALE



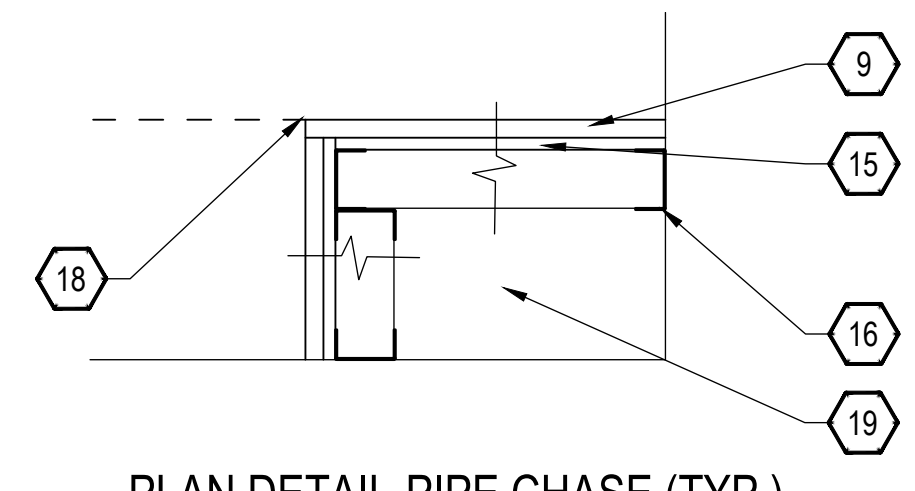
**4** ELEVATION- PARTIAL HEIGHT PIPE CHASE (TYP.)  
NOT TO SCALE



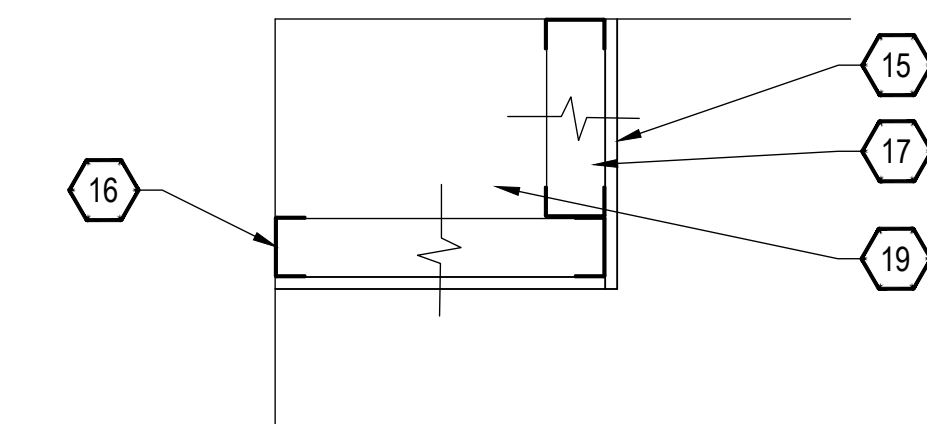
**2** ELEVATION- PIPE CHASE (TYP.)  
NOT TO SCALE



**8** SECTION - PIPE SOFFIT @ 3RD FLR.  
NOT TO SCALE



**5** PLAN DETAIL-PIPE CHASE (TYP.) SECTION-SIM.  
NOT TO SCALE



**3** SECTION - PIPE SOFFIT @ WALL (TYP.)  
NOT TO SCALE

**FLOOR PLAN KEYNOTES:**

- 1 EXISTING CONCRETE COLUMN
- 2 WIDE-FLANGE BEAM- HP PAINT. SEE STRUCTURAL
- 3 2" STEEL OPEN GRATING- SEE STRUCTURAL
- 4 42"H PIPE RAILING W/ REMOVEABLE SECTIONS- HP PAINT. SEE STRUCTURAL
- 5 SPRING-LOADED GATE- HP PAINT (IF NOT PREVIOUSLY FINISHED). SEE STRUCTURAL.
- 6 EQUIPMENT BEYOND. SEE MECHANICAL & ELECTRICAL.
- 7 BAR-STEEL LADDER W/ EXTENSIONS, BRACED- HP PAINT. SEE STRUCTURAL
- 8 EXISTING MARBLE WAINSCOT
- 9 3/4" SOLID-SURFACE MATERIAL WAINSCOT -MATCH HEIGHT (U.N.O.) AND HORIZONTAL JOINTING OF EXISTING WAINSCOT. NOTCH AS NEEDED TO ABUT EXISTING WAINSCOT.
- 10 NEW GWB PIPE CHASE. SEE 5/A6.
- 11 EXISTING PLASTER WALL BEYOND
- 12 PARTIAL HEIGHT PIPE CHASE- HEIGHT TO ALIGN WITH TOP OF FCU. CAP CHASE W/ SOLID SURFACE MATERIAL. FLATWISE PIECE TO 'CAP' VERT. WALL PIECE. SEE 5/A6.
- 13 FCU- SEE MECHANICAL
- 14 NOT USED
- 15 1/2" MR TYPE 'X' GYPSUM DRYWALL-BOTH SIDES
- 16 2-1/2" 25-GAUGE C-CHANNEL (TYP.)
- 17 17A 2-1/2" 25 -GAUGE METAL STUD @ 16" O.C. 17A -FLATWISE
- 18 ALIGN FACE OF CHASE WITH FACE OF FCU.
- 19 SIZE CHASE/SOFFIT TO ACCOMMODATE MECHANICAL PIPING- SEE 2/A2 CHASE SIZE SCHEDULE. SEE MECHANICAL
- 20 3-5/8" 25-GAUGE C-CHANNEL (TYP.) INSTALL C-CHANNEL AROUND PERIMETER AT INFILL AND AT 9/A6.
- 21 3-5/8" 25 -GAUGE METAL STUD @ 16" O.C.
- 22 WOOD CROWN MOLDING W/ FRIEZE BOARD- MATCH EXISTING. INSTALL MOLDING ALONG CEILING ONLY.
- 23 INFILL OPENING WITH 16 GAUGE GALVANIZED SHEET METAL ON METAL STUD FRAMING. USE FULL SHEETS. INSTALL SEALANT AT PERIMETER. OVERLAP THE GALVANIZED STEEL SHEETS 3" WITH SEALANT BEAD BETWEEN SHEETS AND SEALANT BEAD BETWEEN PERIMETER CHANNEL AND SHEET. MAKE AIRTIGHT.

FINAL CONSTRUCTION DOCUMENTS

A/E FIRM PRIME: KENNETH HAHN ARCHITECTS, INC. OMAHA, NE. SUBCONTRACTOR: ALVINE ENGINEERING OMAHA, NE.	DESIGNED: KJH	SUB SHEET NO.  <b>A6</b>	TITLE OF SHEET  <b>DETAILS, ELEVATIONS, SECTIONS</b>  BUCKSTAFF BATHHOUSE HVAC HOT SPRINGS NATIONAL PARK HOT SPRINGS, AK	DRAWING NO. XXXX/XXXX
	DRAWN BY: TWM			PMIS NO. 177425
	TECH. REVIEW: CLZ			SHEET
	DATE: 2/15/2024			11 OF 60