

**GENERAL NOTES**

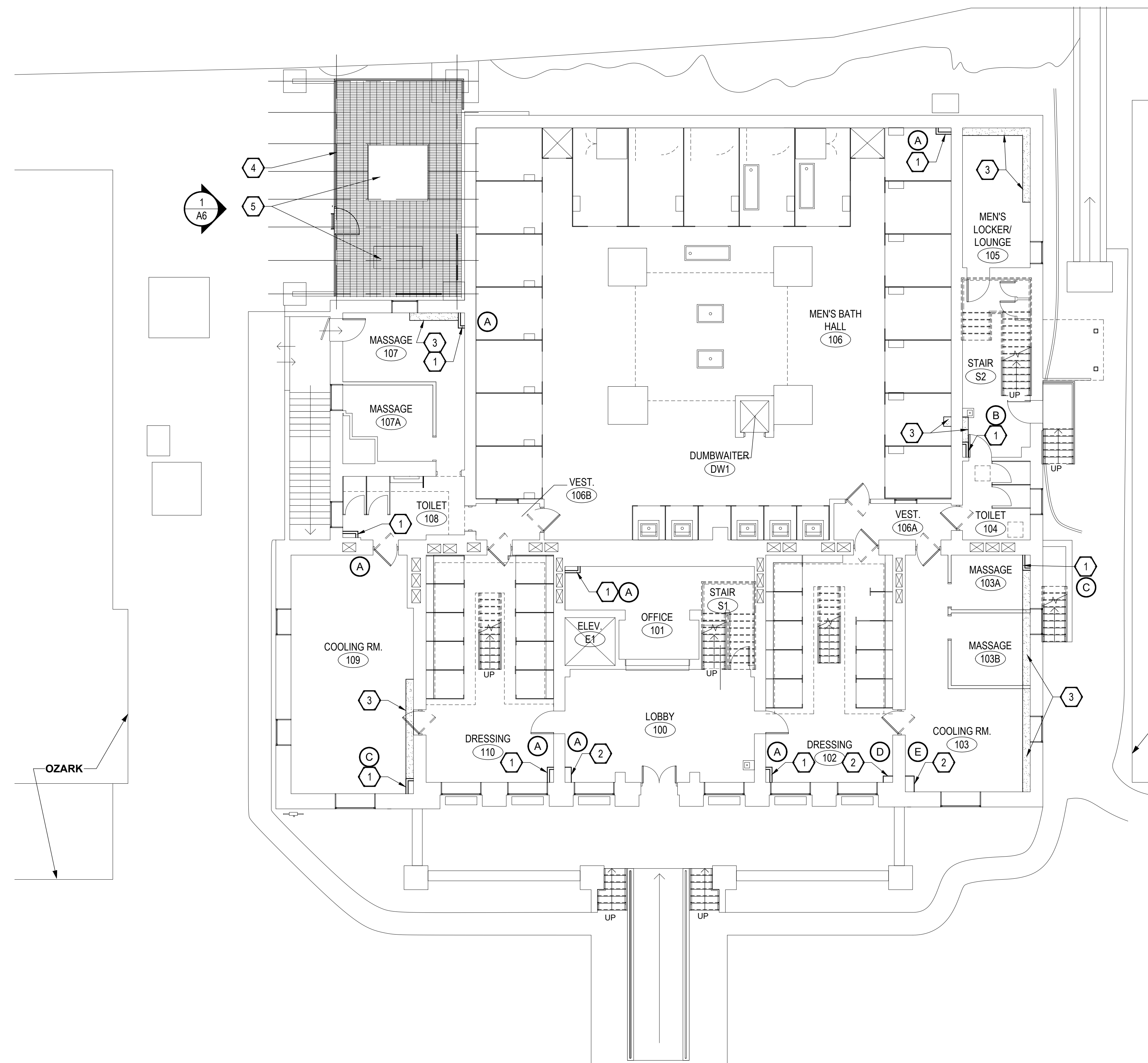
1. PATCH/REPAIR FLOOR AS REQUIRED TO MATCH ADJACENT AREA WHERE NEW FCU DOES NOT COMPLETELY COVER OLD LOCATIONS.
2. PATCH AND REPAIR FLOOR AND WALL TO MATCH ADJACENT AREA WHERE EQUIPMENT IS PERMANENTLY REMOVED.
3. CLEAN FLOOR AND WALL AT FCUs AS NEEDED AS PART OF PREP FOR NEW FCUs.

**FLOOR PLAN KEYNOTES:**

1. VERTICAL PIPE CHASE-FULL HEIGHT WITH SOLID-SURFACE WAINSCOT- PRIME AND PAINT EXPOSED GWB. SEE 2 & 5 /A6. SEE MECHANICAL. SEE 2/A2 FOR RECOMMENDED SIZE.
2. PARTIAL HEIGHT VERTICAL PIPE CHASE- HEIGHT TO MATCH FCU. INSTALL WAINSCOT AND CAP OF SOLID SURFACE MATERIAL. SEE 4 & 5 /A6. SEE MECHANICAL. SEE 2/A2 FOR RECOMMENDED SIZE.
3. SOFFIT-HORIZONTAL PIPE CHASE- PRIME AND PAINT. SEE 3/A6 AND MECHANICAL.
4. MECHANICAL EQUIPMENT PLATFORM WITH GALVANIZED STRUCTURAL STEEL BEAMS-PAINT, GALVANIZED STEEL PIPE RAILINGS AND SPRING-LOADED GATE- PAINT, AND GALVANIZED BAR STEEL LADDER WITH EXTENSIONS-PAINT. SEE STRUCTURAL. NOTE PAINT IS HIGH-PERFORMANCE PRODUCTS.
5. EQUIPMENT- SEE ELECTRICAL AND MECHANICAL.

RECOMMENDED OUTSIDE DIMENSION. COORDINATE VARIANCE W/ CO/COR	
(A)	10" X 2'-0"
(B)	9" X 2'-0" -WIDTH AS NEEDED TO FIT BEHIND DOOR
(C)	1'-0" X 2'-0"
(D)	10" X 1'-3"
(E)	1'-2" X 2'-0"

**2 CHASE SIZE SCHEDULE**



**1 GROUND FLOOR PLAN**  
SCALE: 1/8" = 1'-0"

FINAL CONSTRUCTION DOCUMENTS

A/E FIRM PRIME: KENNETH HAHN ARCHITECTS, INC. OMAHA, NE. SUBCONTRACTOR: ALVINE ENGINEERING OMAHA, NE.	DESIGNED: KJH DRAWN BY: TWM TECH. REVIEW: CLZ DATE: 2/15/2024	SUB SHEET NO.  <b>A2</b>	TITLE OF SHEET  <b>GROUND FLOOR PLAN</b>  BUCKSTAFF BATHHOUSE HVAC HOT SPRINGS NATIONAL PARK HOT SPRINGS, AK	DRAWING NO. XXX/XXXX PMIS NO. 177425 SHEET 7 OF 60
---	--	--------------------------------	--	---

Feb 16, 2024 - 10:28am C:\IT\soft\khh\work\165100\_HOSP\_Buckstaff\_HVAC\DWG\165100\_1\_F08P\_2.dwg USER: bobd