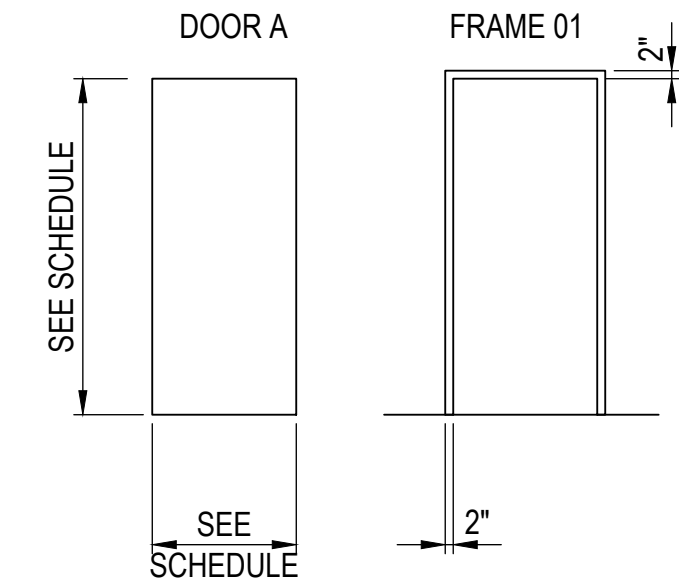


2 WALL PENETRATION
NOT TO SCALE

| NO. | DOOR | | | FRAME | | | FIRE RATING | DETAIL | NOTES |
|------|-------------------------|------|------|-------|------|--------|-------------|--------------|---------|
| | SIZE | TYPE | MAT. | TYPE | MAT. | DEPTH | | | |
| B100 | 2'-10" x 6'-4" x 1-3/4" | A | HM | F01 | HM | 5-7/8" | 45 MIN. | 3, 5/SIM /A1 | A, D |
| B102 | 2'-2" x 6'-4" x 1-3/4" | A | HM | F01 | HM | 5-7/8" | 45 MIN. | 3, 5/A1 | A, B, D |
| B104 | 2'-6" x 6'-8" x 1-3/4" | A | HM | F01 | HM | 5-7/8" | NA | 3, 4/A1 | A, C |
| B105 | 2'-6" x 6'-8" x 1-3/4" | A | HM | F01 | HM | 5-7/8" | NA | 3, 4/A1 | A, C |
| B107 | 2'-6" x 6'-2" x 1-3/4" | A | HM | F01 | HM | 5-7/8" | NA | 3, 4/A1 | A, C |

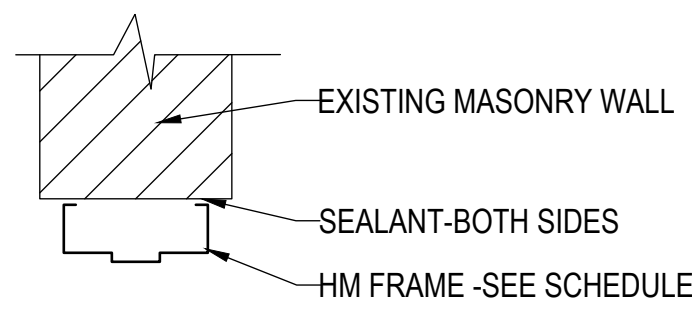
NOTES:
 A. FEILD VERIFY ALL DOOR AND FRAME SIZES AFTER DEMOLITION AND PATCHING.
 B. FRAME AND DOOR TO FIT UNDER AIR DUCT. SEE MECHANICAL.
 C. PROVIDE SEALANT AT PERIMETER OF FRAMES.
 D. PROVIDE FIRE-RATED CAULK AT RATED DOORS.

LEGEND
 HM GALVANIZED HOLLOW METAL

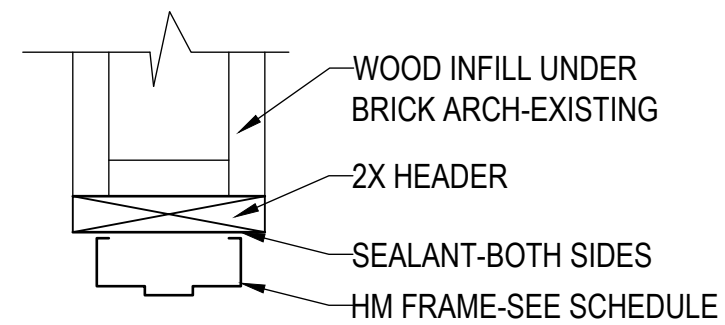


FLOOR PLAN KEYNOTES:

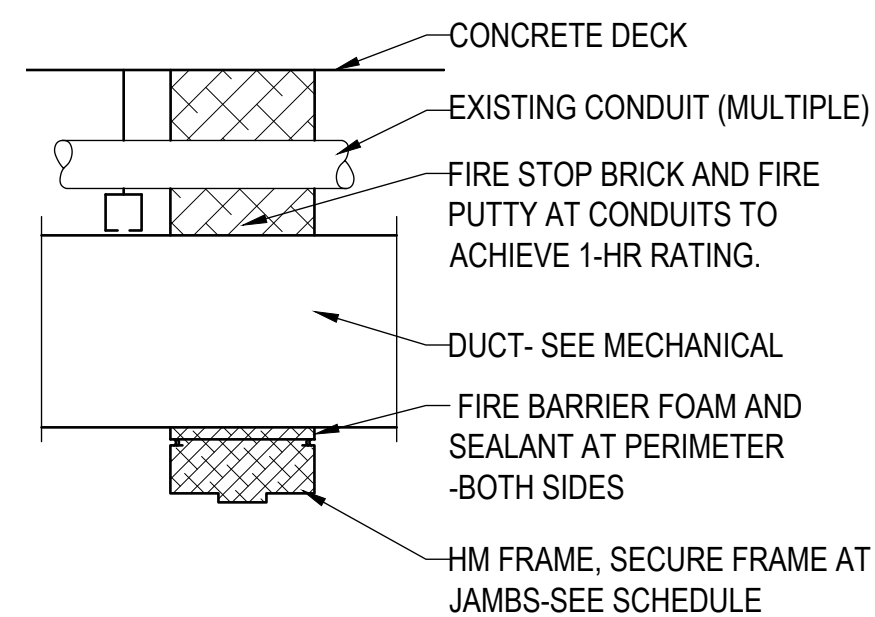
- 1 NEW DOOR AND FRAME-PAINT. SEE SHEET A1.
- 2 INFILL OPENING PER 7/A6. PROVIDE SEALANT AT PERIMETER-BOTH SIDES. PRIME AND PAINT. USE 6" STUDS WHERE ABLE DUE TO WALL THICKNESS.
- 3 AS NEEDED-PATCH AND REPAIR WHERE FRAME WAS REMOVED. MATCH ADJACENT AREA.
- 4 NEW CONCRETE HOUSEKEEPING PADS- SEE MECHANICAL.
- 5 PATCH AND REPAIR AIR DISTRIBUTION CHAMBER AS NEEDED TO BE REASONABLY AIRTIGHT. COORDINATE WITH CO/COR.
- 6 INFILL OPENING WITH GALVANIZED SHEET METAL ON METAL STUD FRAMING. SEE 9/A6.
- 7 NEW DOOR AND FRAME, 1-HOUR RATED -PAINT. SECURE FRAME AT JAMBS. PROVIDE FIRE STOP BRICK AND FIRE PUTTY INFILL ABOVE FRAME AT CONDUITS TO ACHIEVE 1-HR RATING. FOLLOW MANUFACTURER'S RECOMMENDATIONS. PROVIDE FIRE SEALANT AND FIRE BARRIER FOAM AT DOOR HEAD AND JAMBS. SEE 5/A1.
- 8 EXISTING PENETRATION, APPROX. 18" H X 18" W. OF MULTIPLE PIPES THROUGH CONCRETE WALL. INFILL OPENING WITH FIRE STOP BRICKS AND FIRE PUTTY TO ACHIEVE 1-HR RATING. FOLLOW MANUFACTURER'S RECOMMENDATIONS. SEE 2/A1.
- 9 NEW DOOR AND FRAME-PAINT. INSTALL 2X SUPPORT UNDER EDGE OF PLENUM DECK TO STABILIZE. SEE AD-1.



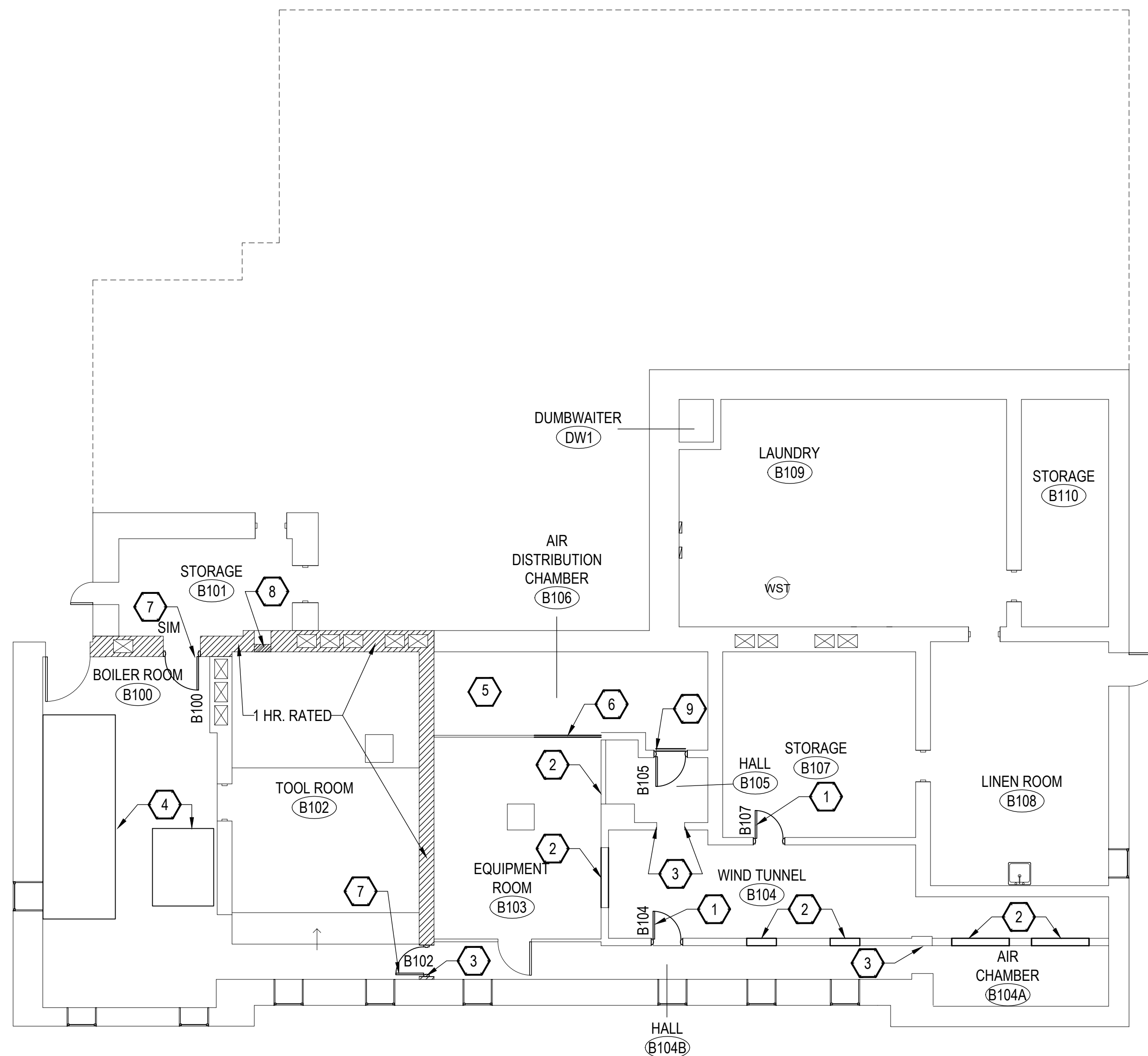
3 DOOR JAMB/HEAD @ MASONRY
SCALE: 1-1/2" = 1'-0"



4 DOOR HEAD @ WOOD INFILL
SCALE: 1-1/2" = 1'-0"



5 FRAME HEAD -1 HOUR-RATED
SCALE: 1-1/2" = 1'-0"



1 BASEMENT PLAN
SCALE: 1/8" = 1'-0"

| | | | | | |
|---|--|----------------------|---------------|--|------------------|
| A/E FIRM PRIME: KENNETH HAHN ARCHITECTS, INC. OMAHA, NE. | | DESIGNED: KJH | SUB SHEET NO. | TITLE OF SHEET | DRAWING NO. |
| SUBCONTRACTOR: ALVINE ENGINEERING OMAHA, NE. | | DRAWN BY: TWM | A1 | BASEMENT PLAN | XXX/XXXX |
| | | TECH. REVIEW: CLZ | | | |
| | | DATE: 2/15/2024 | | BUCKSTAFF BATHHOUSE HVAC HOT SPRINGS NATIONAL PARK HOT SPRINGS, AK | SHEET 6 OF 60 |

FINAL CONSTRUCTION DOCUMENTS