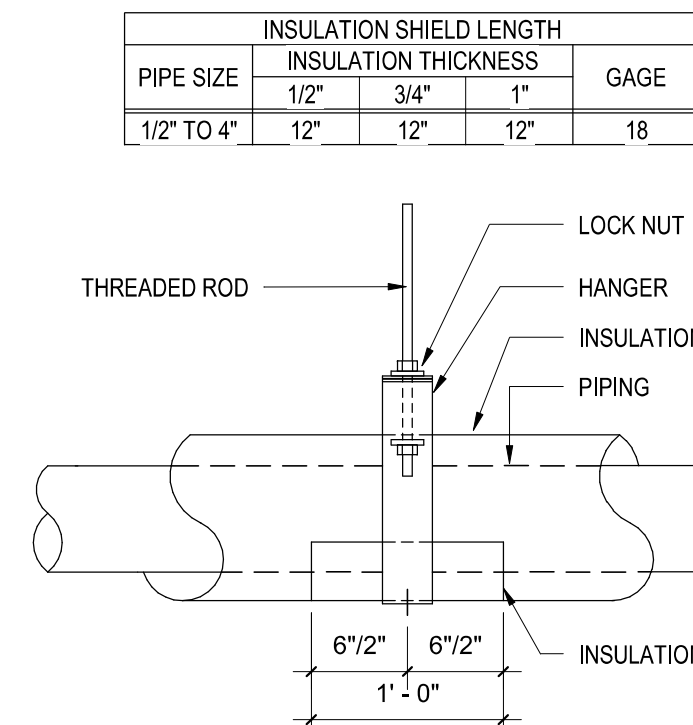
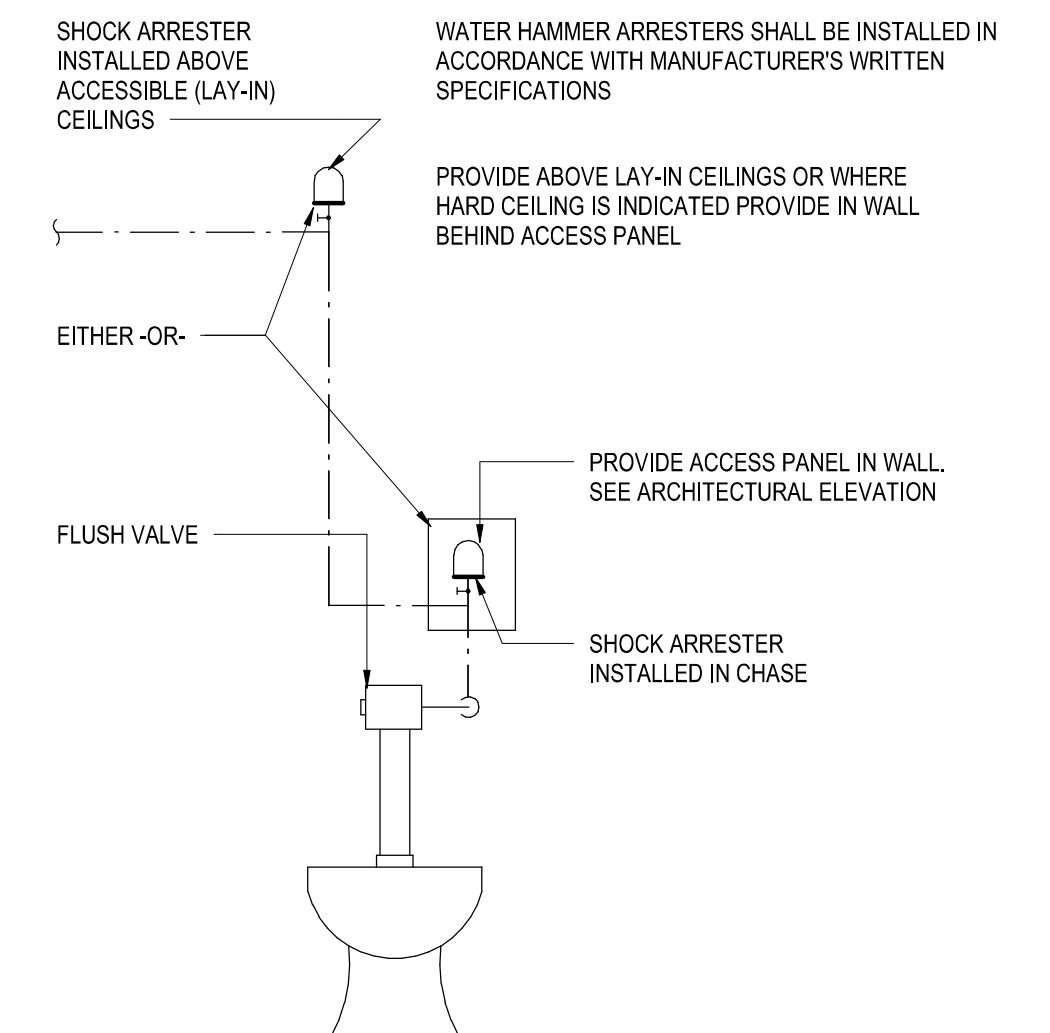


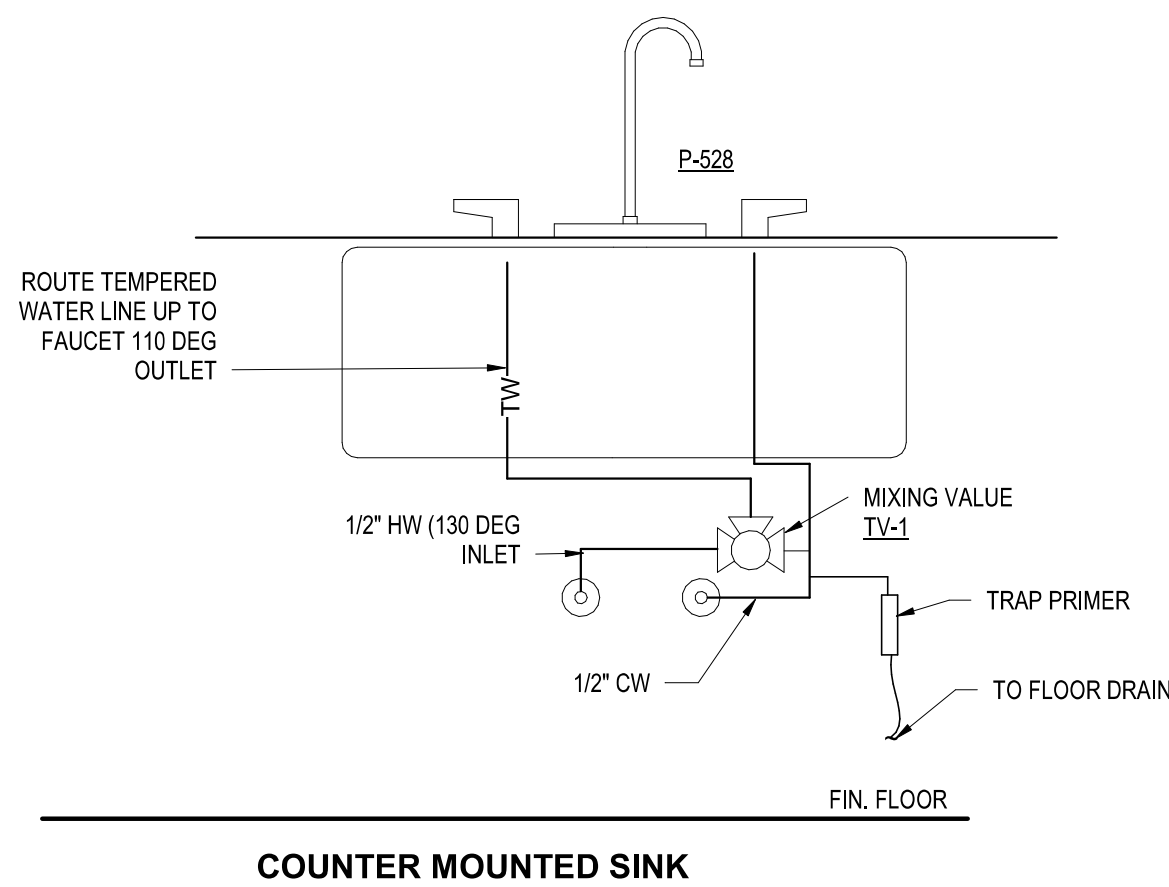
A1 PIPING SYSTEM IDENTIFICATION
NOT TO SCALE



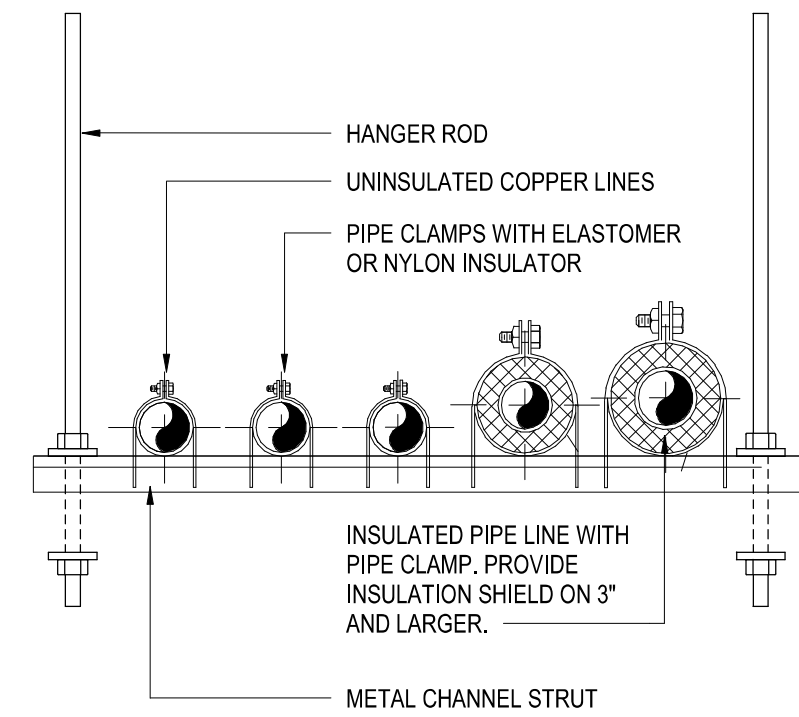
A4 INSULATION SHIELD DETAIL
NOT TO SCALE



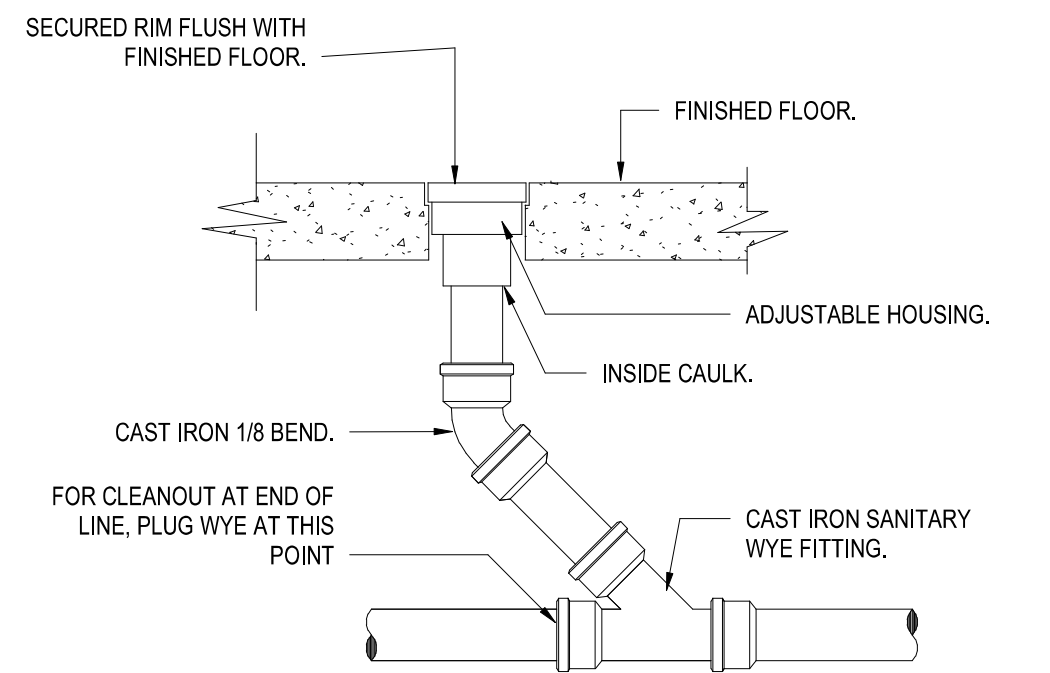
A5 WATER HAMMER ARRESTOR
NOT TO SCALE



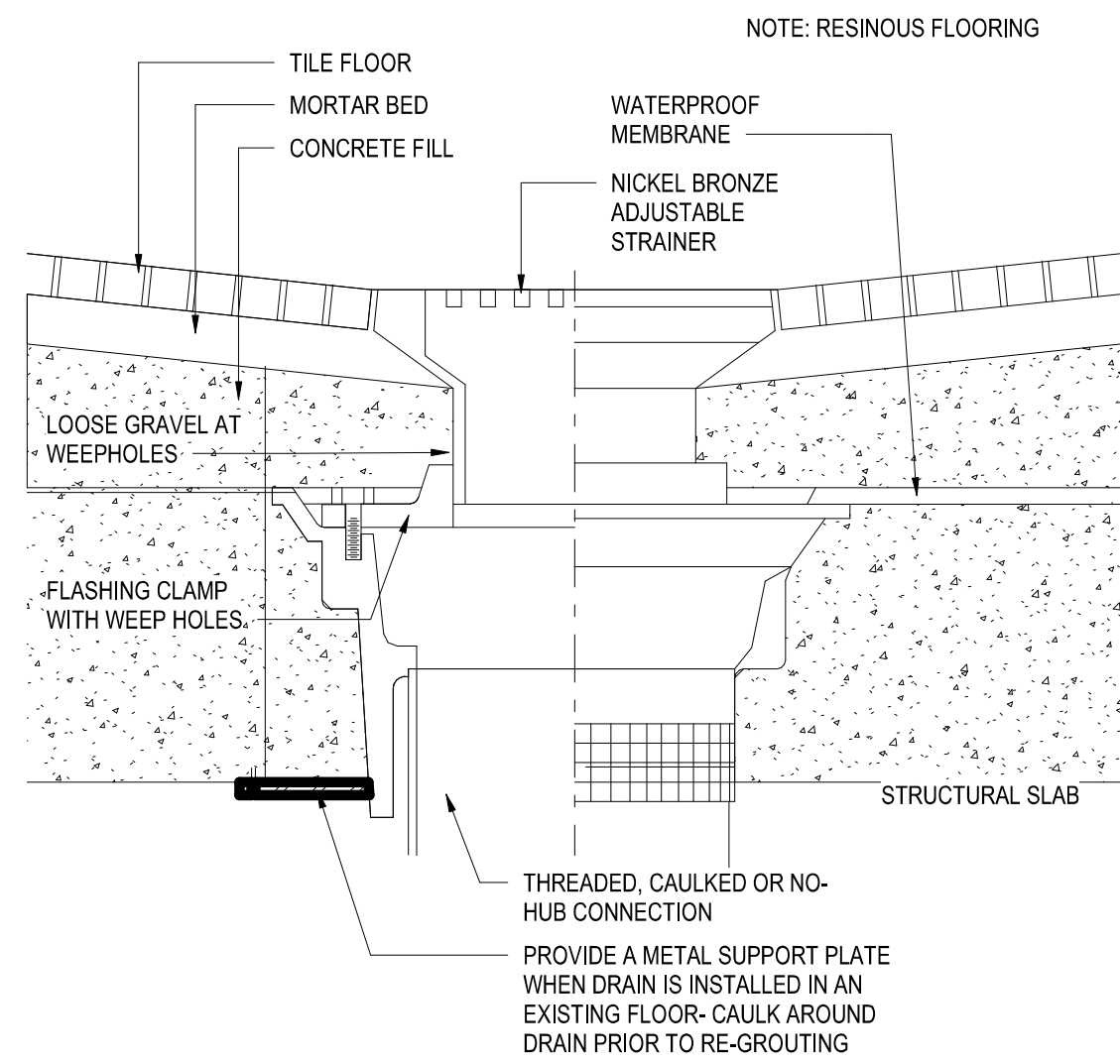
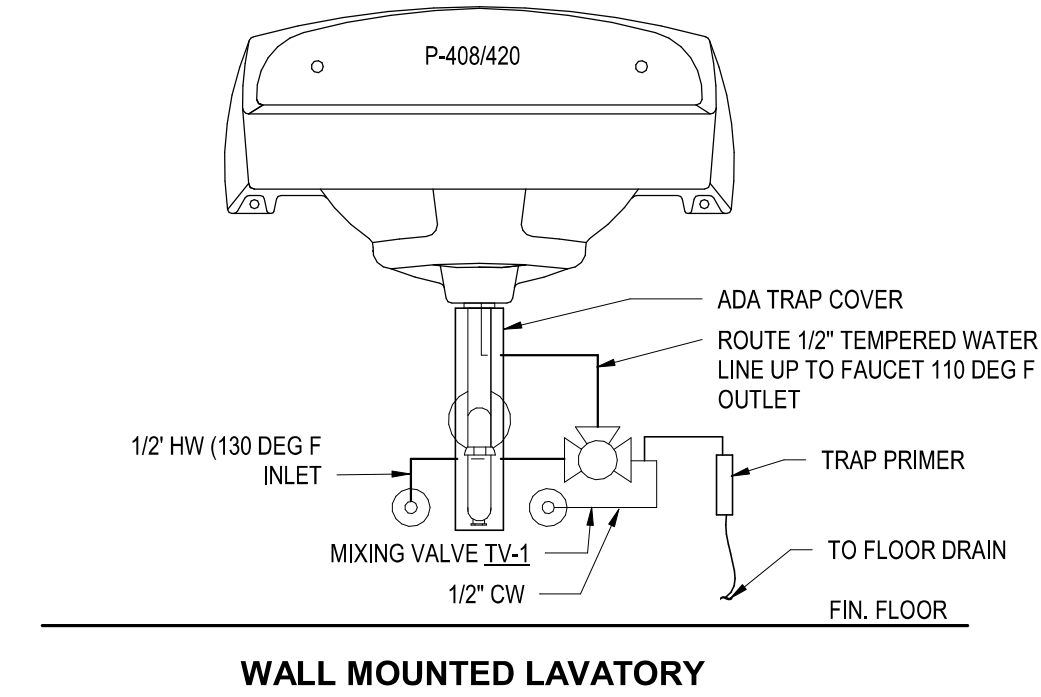
C3 MIXING VALVE FOR SINKS/LAVATORIES
1 1/2" = 1'-0"



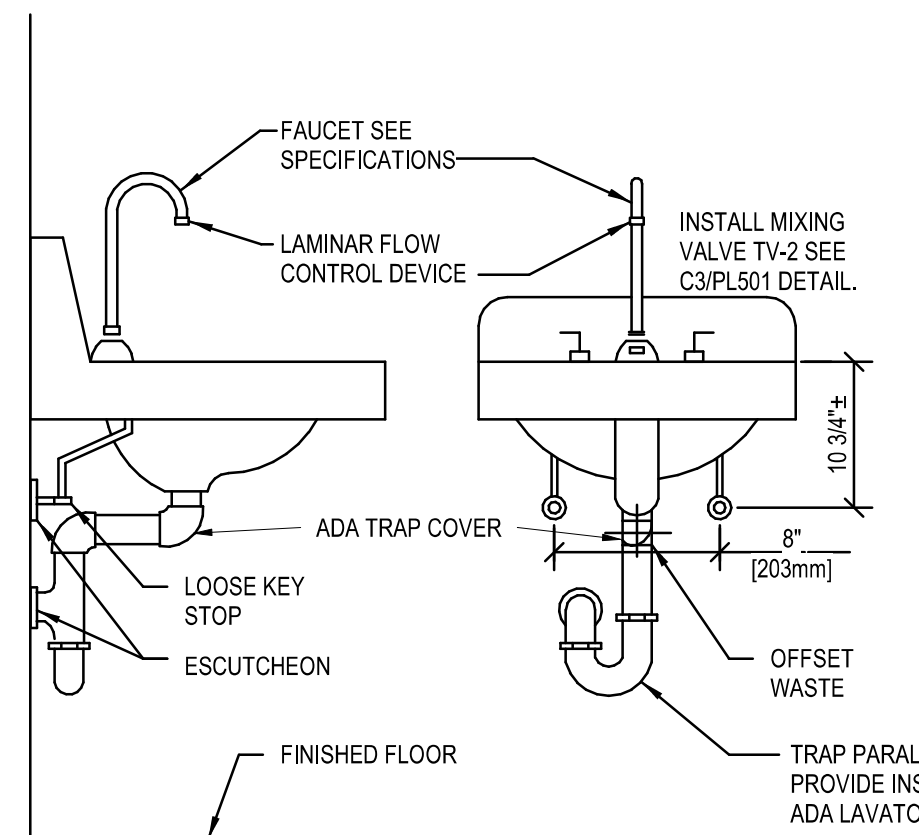
B4 TRAPEZE HANGER DETAIL
NOT TO SCALE



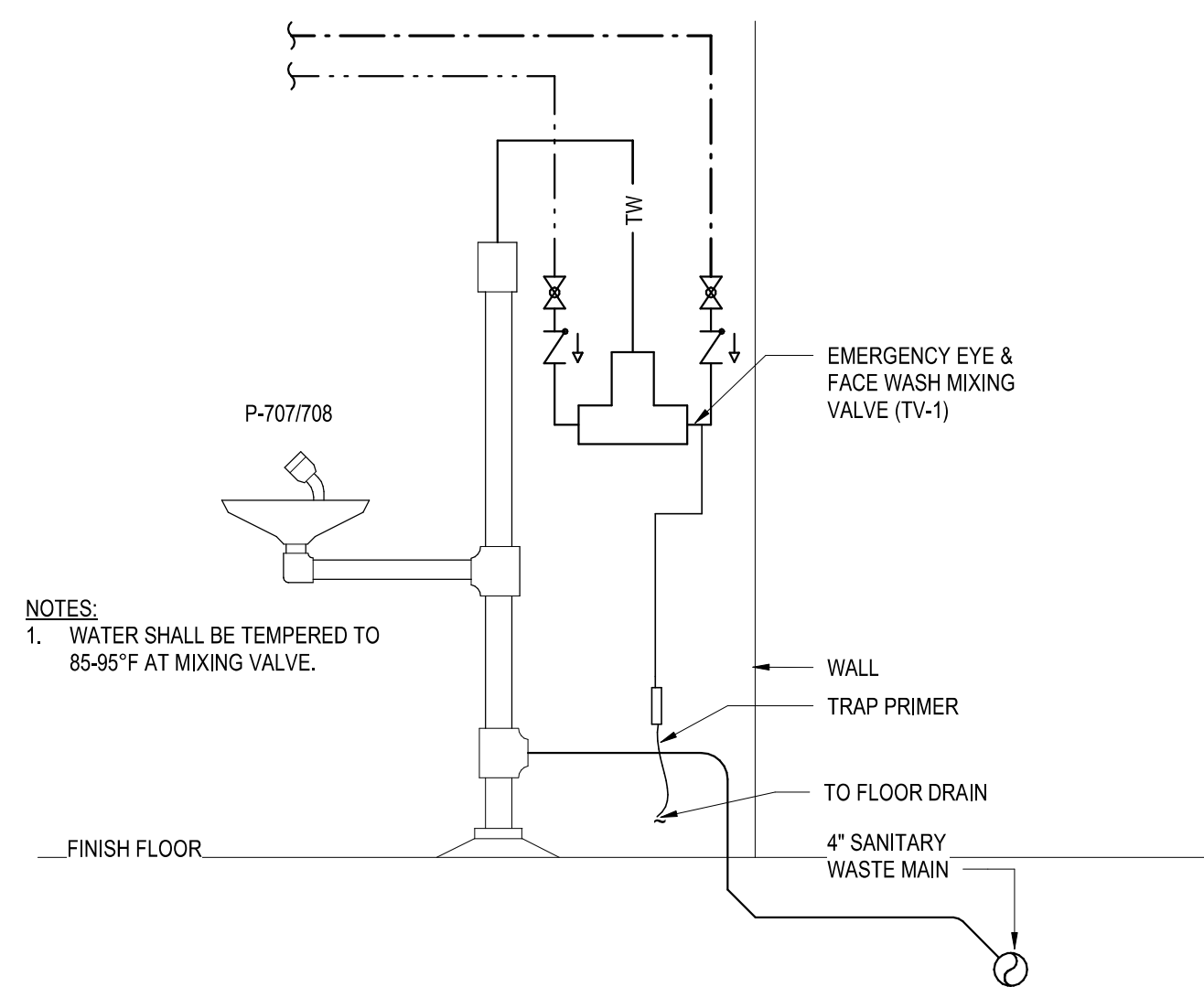
B5 FLOOR CLEANOUT DETAIL
NOT TO SCALE



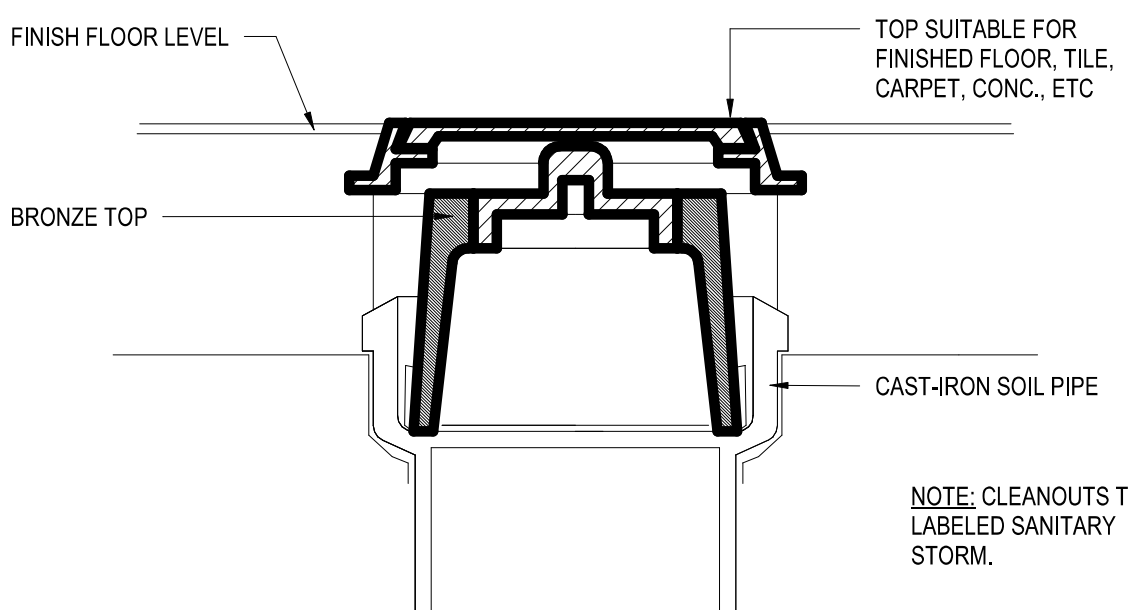
C4 TYPE "C" FLOOR DRAIN (FDC) DETAIL
NOT TO SCALE



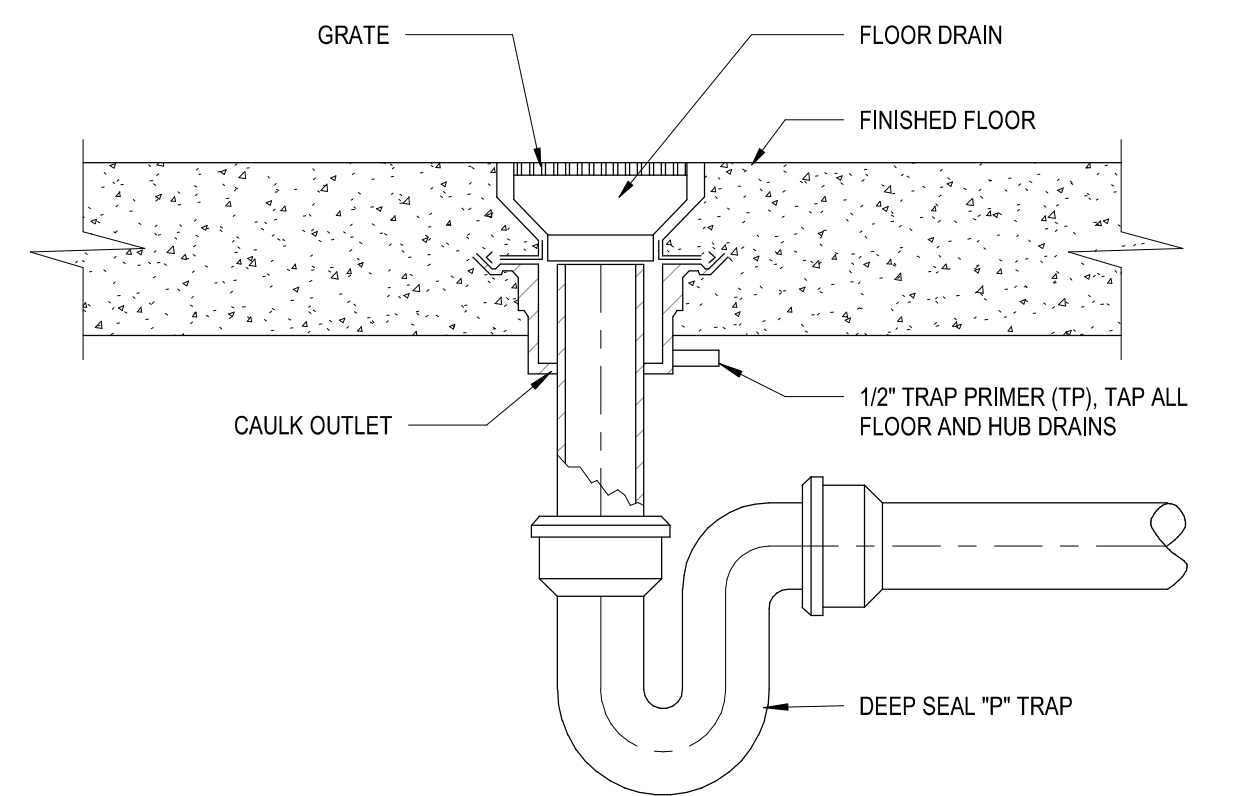
C5 TYPICAL WHEELCHAIR LAVATORY DETAIL
NOT TO SCALE



D3 EMERGENCY EYE & FACE WASH
NOT TO SCALE



D4 CLEAN OUT DETAIL
NOT TO SCALE



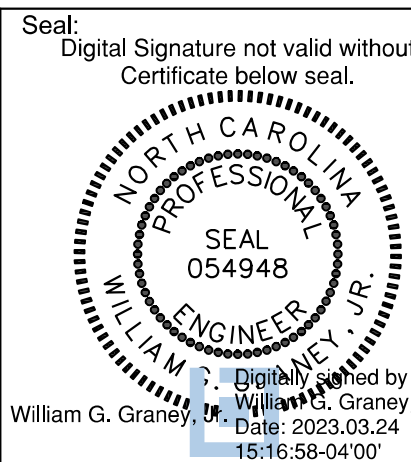
D5 TYPICAL FLOOR DRAIN DETAIL
NOT TO SCALE

Revisions:		
No.	Description	Date

CONSULTANTS:



8701 RED OAK BLVD, SUITE 500
CHARLOTTE, NC 28217
PHONE: 704.522.0405
WWW.BRITTPETERS.COM



ARCHITECT / ENGINEERS:



8016 TOWER POINT DRIVE
CHARLOTTE, NC 28227
P 704.814.1320
F 704.321.0833

HG PROJECT: 18002
COPYRIGHT © 2021

Drawing Title:

DETAILS

Project Phase:
BID DOCUMENTS

FULLY SPRINKLERED

Project Title:

**RENOVATE MED SURGE
WARDS**

Location:

**VETERANS HEALTHCARE SYSTEM
OF THE OZARKS**

Date:

MARCH 24, 2024

Checked:

WGG

Drawn:

DM

Project Number:

564-17-140

Building Number:

1

Drawing Number:

PL501

Sheet **114** of **162**

**Engineering
Service**



VA U.S. Department
of Veterans Affairs