

**PHASING NOTES:**  
**REFER TO PHASING ON SHEETS GC122 THRU GC123b FOR PHASED AREAS OF WORK.**

SEE DEDUCT ALTERNATE 5 ON SHEET G1001 FOR ALTERNATE WORK PHASE 2. REFER GC123a AND GC123b FOR MORE INFORMATION.

**GENERAL NOTES**

1. REFER TO SHEET PL001 FOR LEGEND, ABBREVIATIONS, SCHEDULES AND GENERAL NOTES.
2. CONTRACTOR SHALL ENSURE ALL NEW PIPING TO CONNECT TO EXISTING PIPING OF EQUAL OR GREATER IN SIZE.

**SHEET KEYNOTES**

1. EXISTING MEDICAL GAS PIPING TO REMAIN.
2. EXISTING MEDICAL GAS PIPING DOWN TO FIRST FLOOR SHALL REMAIN UNDISTURBED.
3. EXISTING GAS PIPING TO SERVE ANCILLARY AREA NOT IN PROJECT SCOPE.
4. PROVIDE CEILING MOUNTED PHENOLIC LABEL FOR ALL SHUT-OFF VALVES LOCATED ABOVE THE CEILING.
5. NEW MEDICAL MAIN PIPING WITH TIE-IN CONNECTIONS WITH LOCKABLE SERVICE VALVES. SHALL BE INSTALLED DURING PHASE 1B. REFER TO SHEET PG101 FOR CONTINUATION OF PIPE ROUTING.

**PARTITION GRAPHICS**

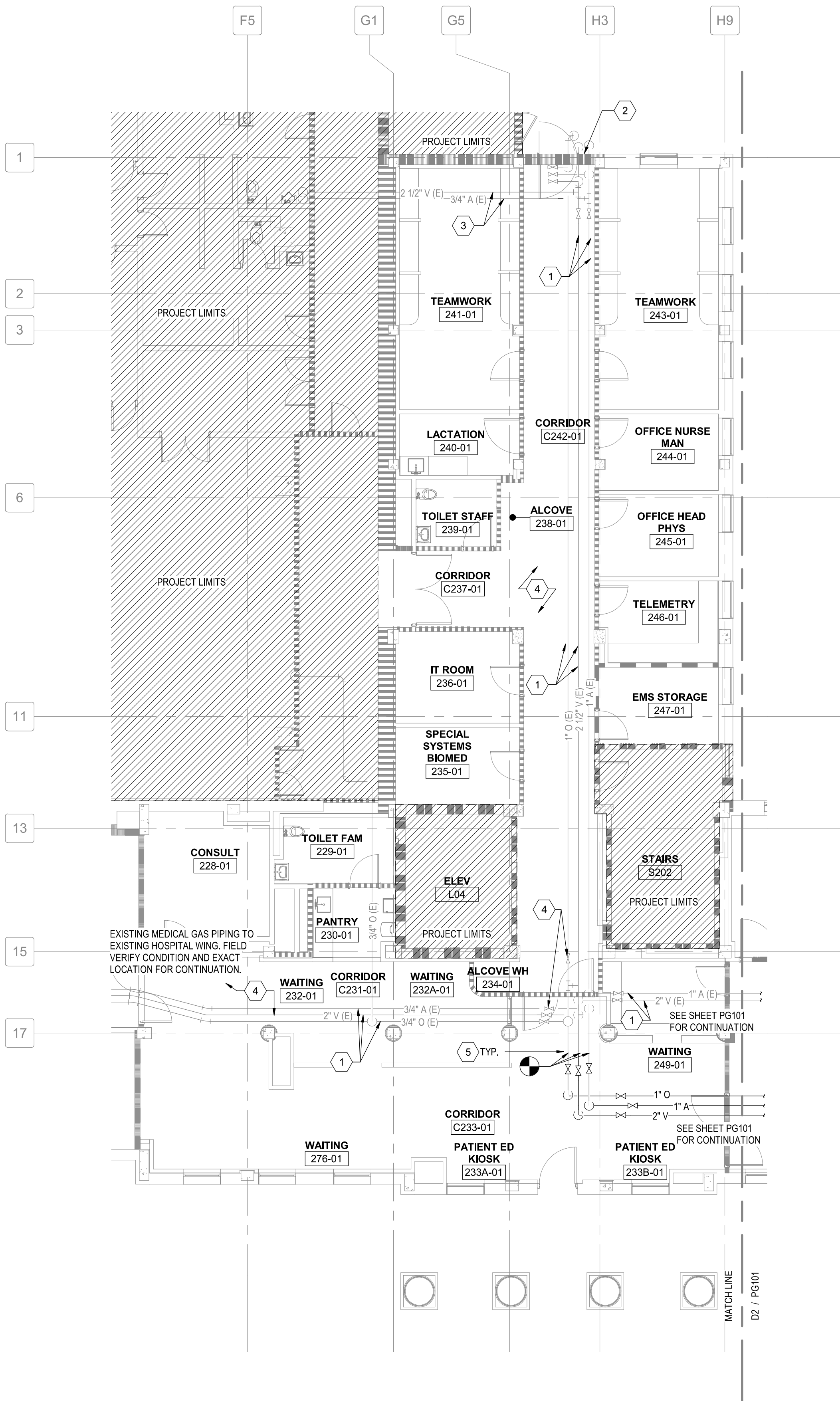
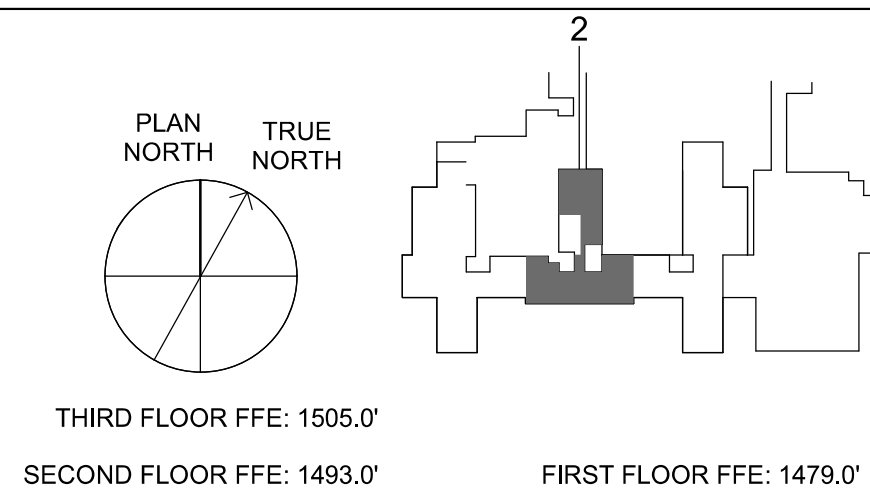
**PARTITION PHASING**

- EXISTING ELEMENT TO REMAIN
- EXISTING ELEMENT TO BE DEMOLISHED
- TEMPORARY 1-HOUR RATED ELEMENT TO BE CONSTRUCTED AND DEMOLISHED IN SAME PHASE

**PARTITION RATING**

- NO RATING
- SMOKE RESISTIVE PARTITION - NON RATED
- 1 HOUR FIRE BARRIER
- 1 HOUR FIRE/SMOKE BARRIER
- 2 HOUR FIRE BARRIER
- 2 HOUR FIRE/ SMOKE BARRIER

**KEY PLAN**



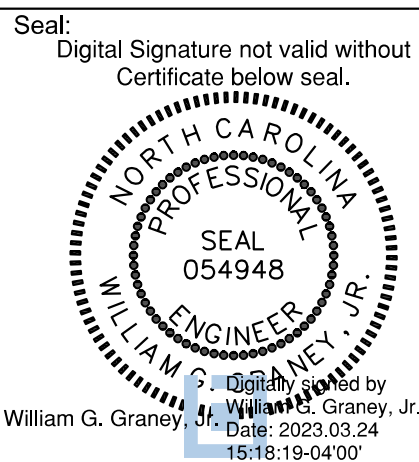
**D2 PARTIAL 2 SECOND FLOOR MED GAS PLAN - PHASE 2**  
1/8" = 1'-0"

Revisions:		
No.	Description	Date

**CONSULTANTS:**



8701 RED OAK BLVD, SUITE 500  
CHARLOTTE, NC 28217  
PHONE: 704.522.0405  
WWW.BRITTPETERS.COM



**ARCHITECT / ENGINEERS:**



8016 TOWER POINT DRIVE  
CHARLOTTE, NC 28227  
P 704.814.1320  
F 704.321.0833

HDG PROJECT: 18002  
COPYRIGHT © 2021

Drawing Title:

**PARTIAL 2 SECOND FLOOR  
MED GAS PLAN - PHASE 2**

Project Phase:

BID DOCUMENTS

**FULLY SPRINKLERED**

Project Title:

**RENOVATE MED SURGE  
WARDS**

Location:

VETERANS HEALTHCARE SYSTEM  
OF THE OZARKS

Date:

MARCH 24, 2024

Checked:

WGG

Drawn:

DM

Project Number:

564-17-140

Building Number:

**1**

Drawing Number:

**PG102**

Sheet **113** of **162**

**Engineering  
Service**



**VA** U.S. Department  
of Veterans Affairs