

0 8' three inches = one foot
0 8' one and one half inches = one foot
0 8' one inch = one foot
0 8' one inch = one foot
0 8' three quarters inch = one foot
0 8' one half inch = one foot
0 8' one quarter inch = one foot
0 8' one eighth inch = one foot
0 8' one eighth inch = one foot

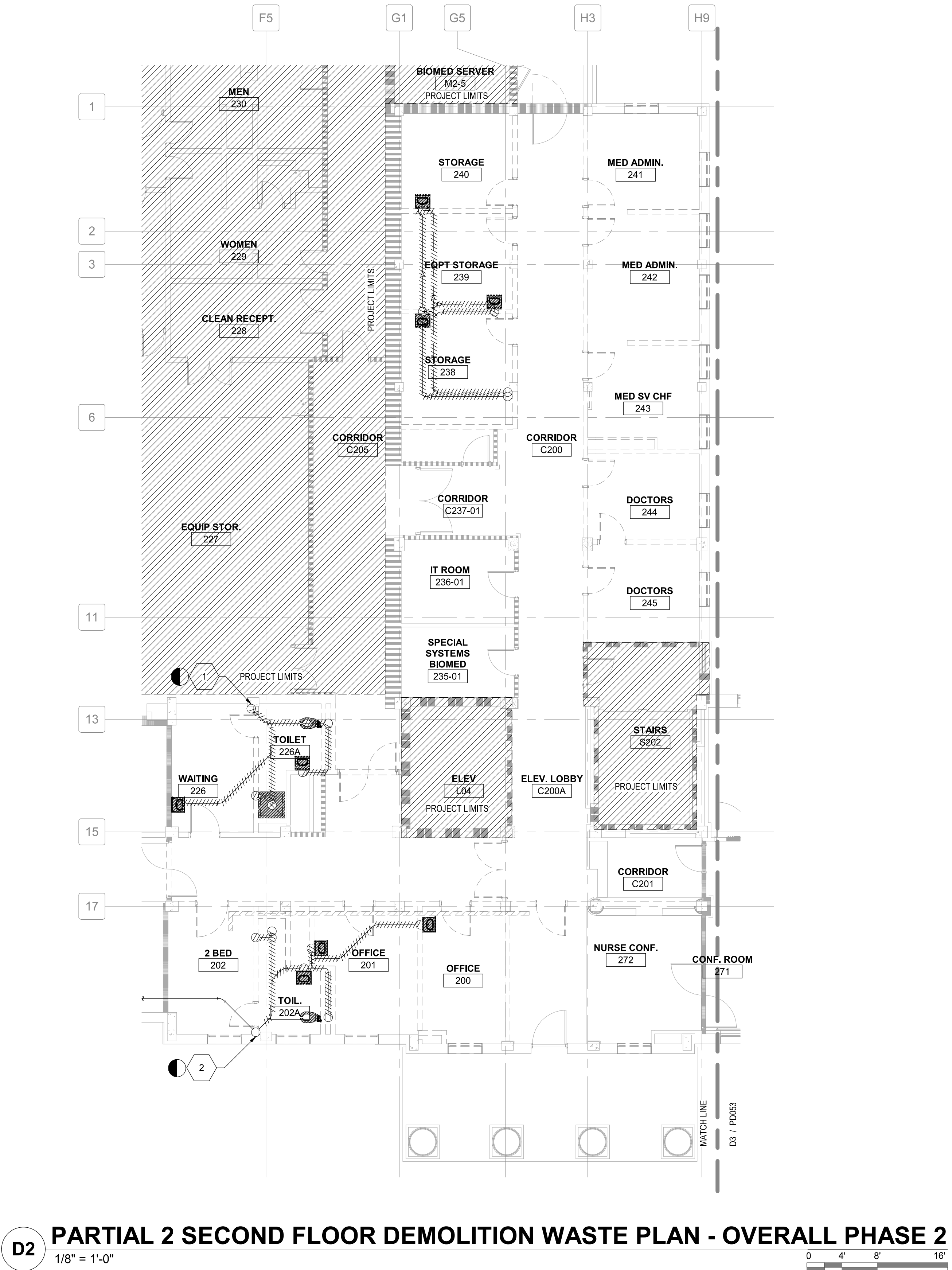
A
B
C
D

PHASING NOTES:
REFER TO PHASING ON SHEETS GC119 THRU GC123b FOR PHASED AREAS OF WORK.

SEE DEDUCT ALTERNATE 5 ON SHEET GI001 FOR ALTERNATE WORK PHASE 2. REFER GC123a AND GC123b FOR MORE INFORMATION.

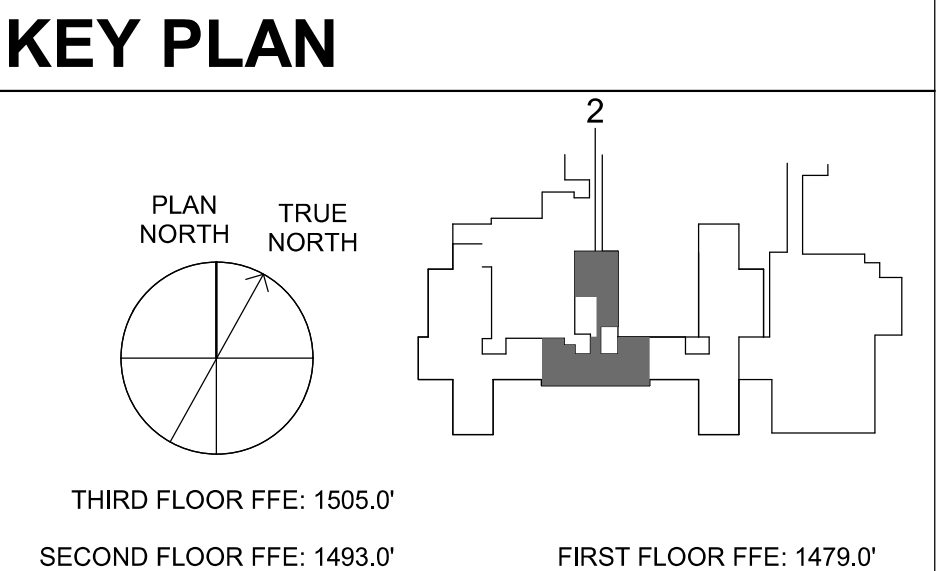
- GENERAL NOTES**
- A. COORDINATE PROJECT PHASING AND WORK AREA WITH GC120 SERIES DRAWINGS AND SPECIFICATIONS.
 - B. DEMOLISH ALL FIXTURES IN PROJECT AREA.
 - C. COORDINATE WITH THE COR AND TURN OVER ALL FIXTURES, VALVES, OR OTHER DEVICES THAT THE GOVERNMENT TAGS AS SALVAGE OR DIRECTS THE CONTRACTOR TO SALVAGE.
 - D. UTILITY SERVICES MUST BE MAINTAINED TO THE FLOOR ABOVE OR BELOW. ANY DISRUPTION IN SERVICES SHALL BE COORDINATED WITH THE COR 2 WEEKS BEFORE THE DISRUPTION. SERVICES SHALL NOT BE OUT FOR MORE THAN 8 HOURS OR AS ALLOWED BY THE COR.
 - E. ALL WORK ON THE FLOORS BELOW SHALL BE DONE ON NIGHTS OR WEEK ENDS UNLESS OTHERWISE PERMITTED BY COR.
 - F. SEE PL001 FOR ADDITIONAL GENERAL NOTES.
 - G. REMOVE EXISTING ZONE BOX. FILL SUBSEQUENT HOLE WITH LIKE MATERIALS.

- SHEET KEYNOTES**
- 1 4" SANITARY DOWN TO FIRST FLOOR.
 - 2 4" SANITARY DOWN TO BASEMENT.



PARTITION GRAPHICS

- PARTITION PHASING**
- EXISTING ELEMENT TO REMAIN
 - EXISTING ELEMENT TO BE DEMOLISHED
 - TEMPORARY 1-HOUR RATED ELEMENT TO BE CONSTRUCTED AND DEMOLISHED IN SAME PHASE
- PARTITION RATING**
- NO RATING
 - SMOKE RESISTIVE PARTITION - NON RATED
 - 1 HOUR FIRE BARRIER
 - 1 HOUR FIRE/SMOKE BARRIER
 - 2 HOUR FIRE BARRIER
 - 2 HOUR FIRE/ SMOKE BARRIER



Revisions:		
No.	Description	Date

CONSULTANTS:

BRITT, PETERS AND ASSOCIATES INC.
consulting engineers

8701 RED OAK BLVD, SUITE 500
CHARLOTTE, NC 28217
PHONE: 704.522.0405
WWW.BRITTPETERS.COM

Seal:
Digital Signature not valid without Certificate below seal.

WILLIAM G. GRANDY JR.
Professional Engineer
No. 054948
Exp. 12/31/2023

Digitally signed by William G. Grandy Jr., DN: cn=William G. Grandy Jr., o=Professional Engineer, ou=North Carolina, c=US

ARCHITECT / ENGINEERS:

HARRELL DESIGN GROUP, P.C.

8016 TOWER POINT DRIVE
CHARLOTTE, NC 28227

P 704.814.1320
F 704.321.0833

HDG PROJECT: 18002
COPYRIGHT © 2021

Drawing Title:

PARTIAL 2 SECOND FLOOR DEMOLITION WASTE PLAN - PHASE 2

Project Phase:

BID DOCUMENTS

FULLY SPRINKLERED

Project Title:

RENOVATE MED SURGE WARDS

Location:

VETERANS HEALTHCARE SYSTEM OF THE OZARKS

Date:

MARCH 24, 2024

Checked:

WGG

Drawn:

DM

Project Number:

564-17-140

Building Number:

1

Drawing Number:

PD054

Sheet

101 of **162**

Engineering Service

VETERANS HEALTH CARE SYSTEM OF THE OZARKS

VA U.S. Department of Veterans Affairs