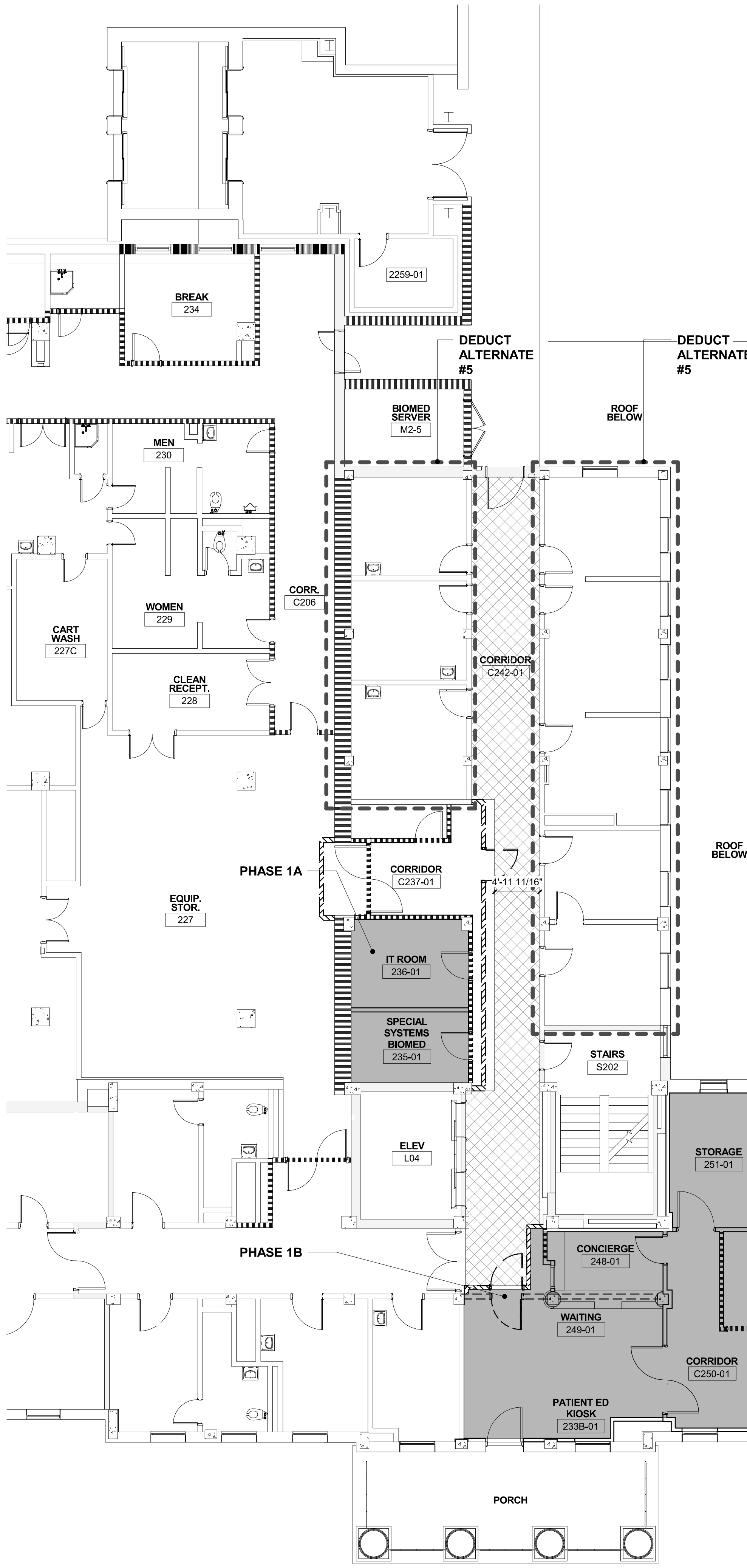
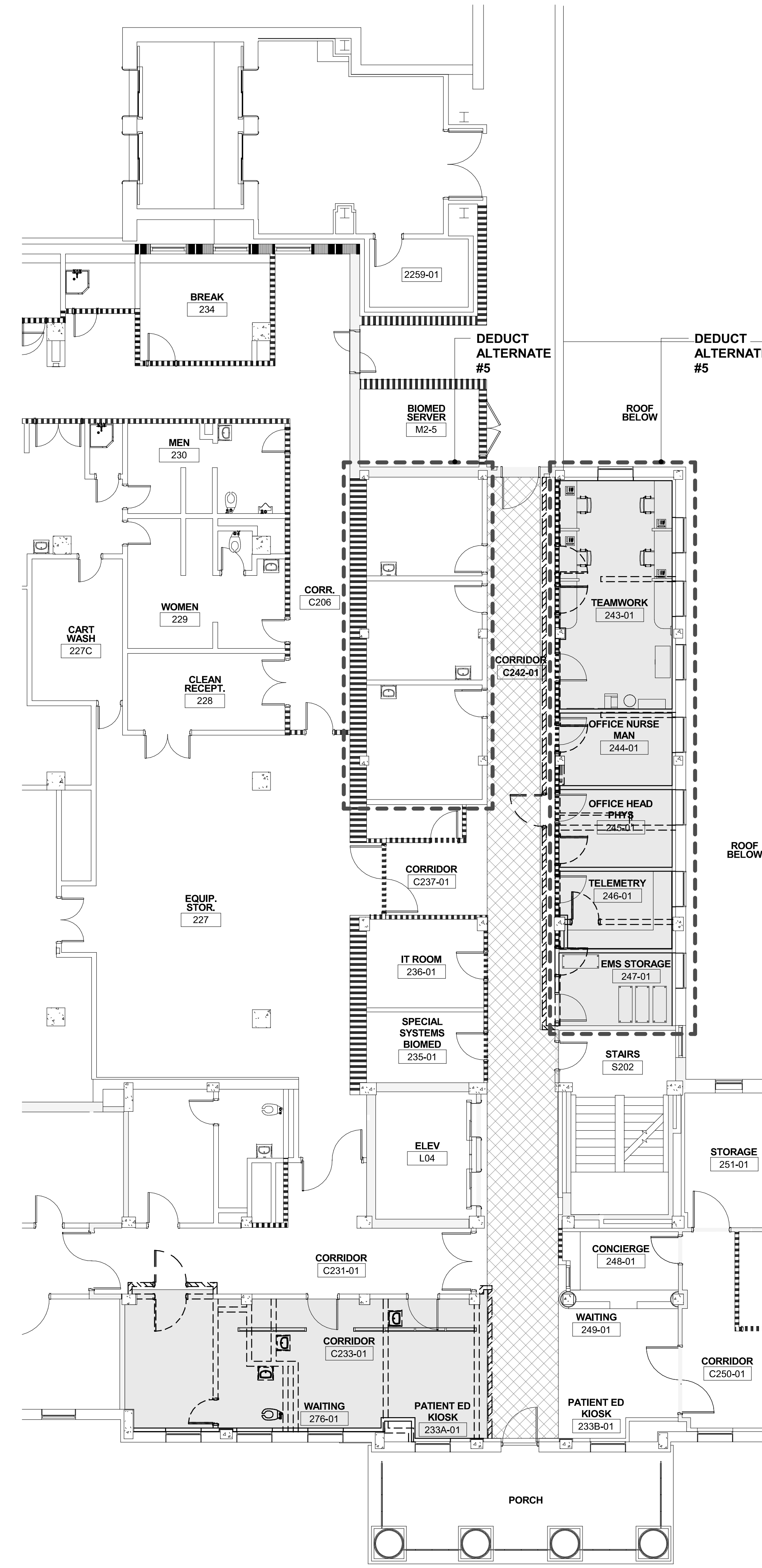


0 2 4 6 8 10 12 14 16 18 20 22 24 26 28 30 32 34 36 38 40 42 44 46 48 50 52 54 56 58 60 62 64 66 68 70 72 74 76 78 80 82 84 86 88 90 92 94 96 98 100

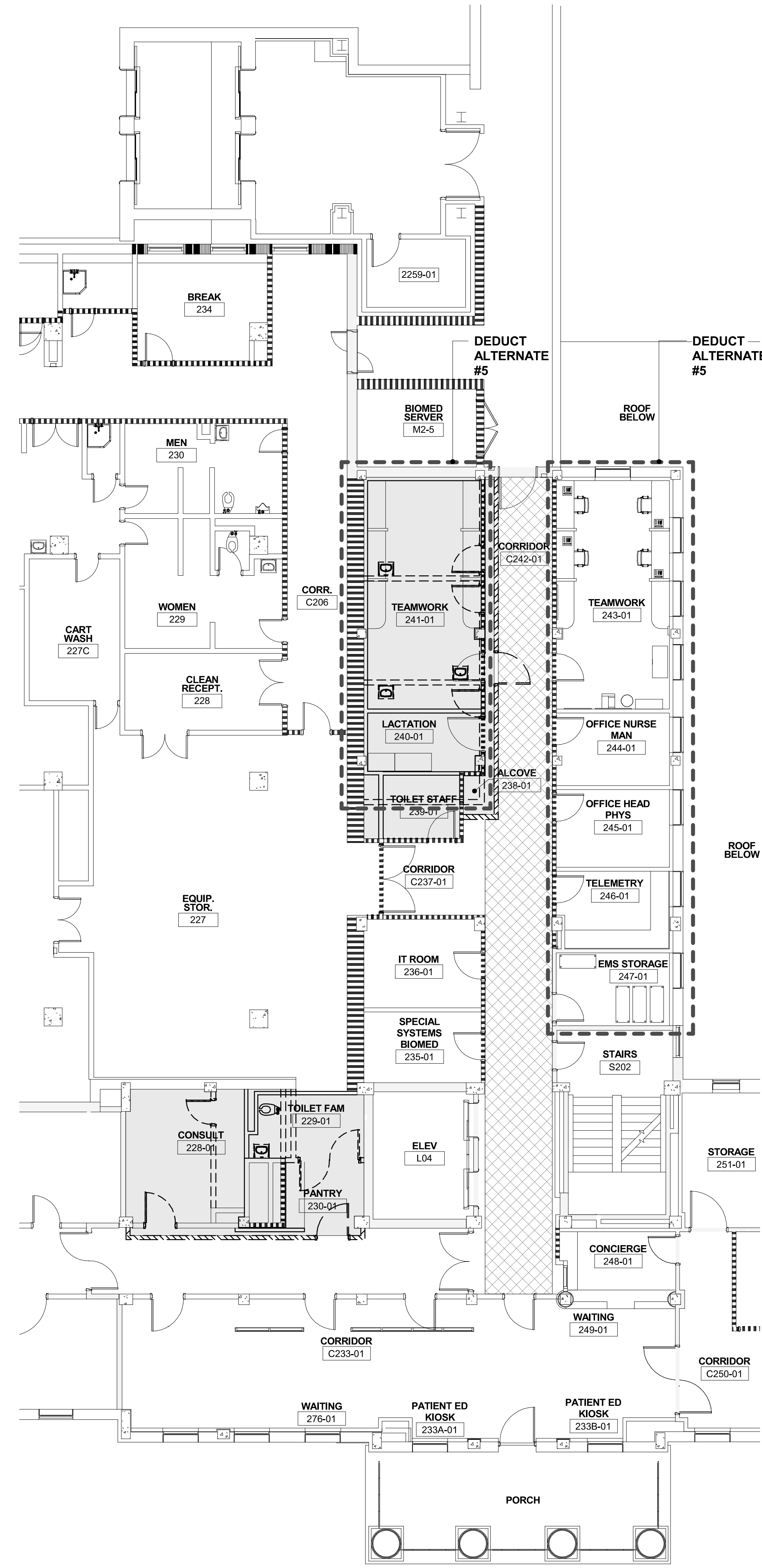
one eighth inch = one foot
one quarter inch = one foot
three eighths inch = one foot
one half inch = one foot
three quarters inch = one foot
one inch = one foot
one and one half inches = one foot
two inches = one foot
three inches = one foot
four inches = one foot
five inches = one foot
six inches = one foot
seven inches = one foot
eight inches = one foot
nine inches = one foot
ten inches = one foot
eleven inches = one foot
twelve inches = one foot
thirteen inches = one foot
fourteen inches = one foot
fifteen inches = one foot
sixteen inches = one foot
seventeen inches = one foot
eighteen inches = one foot
nineteen inches = one foot
twenty inches = one foot
twenty one inches = one foot
twenty two inches = one foot
twenty three inches = one foot
twenty four inches = one foot
twenty five inches = one foot
twenty six inches = one foot
twenty seven inches = one foot
twenty eight inches = one foot
twenty nine inches = one foot
thirty inches = one foot
thirty one inches = one foot
thirty two inches = one foot
thirty three inches = one foot
thirty four inches = one foot
thirty five inches = one foot
thirty six inches = one foot
thirty seven inches = one foot
thirty eight inches = one foot
thirty nine inches = one foot
forty inches = one foot
forty one inches = one foot
forty two inches = one foot
forty three inches = one foot
forty four inches = one foot
forty five inches = one foot
forty six inches = one foot
forty seven inches = one foot
forty eight inches = one foot
forty nine inches = one foot
fifty inches = one foot
fifty one inches = one foot
fifty two inches = one foot
fifty three inches = one foot
fifty four inches = one foot
fifty five inches = one foot
fifty six inches = one foot
fifty seven inches = one foot
fifty eight inches = one foot
fifty nine inches = one foot
sixty inches = one foot
sixty one inches = one foot
sixty two inches = one foot
sixty three inches = one foot
sixty four inches = one foot
sixty five inches = one foot
sixty six inches = one foot
sixty seven inches = one foot
sixty eight inches = one foot
sixty nine inches = one foot
seventy inches = one foot
seventy one inches = one foot
seventy two inches = one foot
seventy three inches = one foot
seventy four inches = one foot
seventy five inches = one foot
seventy six inches = one foot
seventy seven inches = one foot
seventy eight inches = one foot
seventy nine inches = one foot
eighty inches = one foot
eighty one inches = one foot
eighty two inches = one foot
eighty three inches = one foot
eighty four inches = one foot
eighty five inches = one foot
eighty six inches = one foot
eighty seven inches = one foot
eighty eight inches = one foot
eighty nine inches = one foot
ninety inches = one foot
ninety one inches = one foot
ninety two inches = one foot
ninety three inches = one foot
ninety four inches = one foot
ninety five inches = one foot
ninety six inches = one foot
ninety seven inches = one foot
ninety eight inches = one foot
ninety nine inches = one foot
one hundred inches = one foot



D1 PARTIAL WARD 2 - PHASE 1A-1B
1/8" = 1'-0"



D2 PARTIAL WARD 2 - PHASE 2A
1/8" = 1'-0"



D3 PARTIAL WARD 2 - PHASE 2B
1/8" = 1'-0"

GENERAL SHEET NOTES

- A. REFER TO SHEET A001 FOR GENERAL PROJECT NOTES.
B. EXISTING BUILDING CONFIGURATION DEPICTED IS BASED ON CONDITIONS OBSERVED AT TIME OF DESIGN. CONTRACTOR SHALL VERIFY ALL CONDITIONS IN FIELD AT TIME OF CONSTRUCTION.
C. WITHIN EACH IDENTIFIED PHASE, GC WILL INSTALL UPRIGHT SPRINKLER HEADS IN AREAS OF CONSTRUCTION. SEE FX DRAWINGS FOR FURTHER INFORMATION.
D. AT GC COMPLETION OF EACH INTERIM PHASE AND FINAL PHASE, GC TO PROVIDE 5 SEQUENTIAL BUSINESS DAYS FOR VA OBSERVATION AND PUNCH LIST REVIEW. VA WILL NOT TAKE BENEFICIAL OCCUPANCY OR TAKE FINAL ACCEPTANCE UNTIL INTERIM AND FINAL PUNCH LIST ITEMS ARE COMPLETED.
E. IN PHASES 2, ALL TRASH IS REMOVED BY COVERED CARTS.

PHASING SUMMARY

GENERAL CONTRACTOR AND SUBCONTRACTORS ABOVE CEILING WORK MUST BE CAREFULLY PHASED AND COORDINATED WITH THE HOSPITAL'S ONGOING, EXISTING OPERATIONS AND APPROVED BY COR. WORK SHALL ALSO CONFORM TO NEW CONSTRUCTION PHASES ON 2B AND 2.
AT THE BEGINNING OF EACH PHASE, COORDINATE MEP WORK PRIOR TO ANY DEMOLITION.
DURING ALL PHASES, GC TO PROVIDE TEMPORARY PARTITION IN CORRIDOR CONNECTING TO ELEVATOR IN WARD 2, FOR MATERIAL DELIVERY/REMOVAL. GC SHOULD MAINTAIN A CLEAR HALLWAY WIDTH OF 48" FOR PATIENT-CARE ACCESS.
WARD 2 PHASING:

- A. **2A. RENOVATE EAST SIDE OF CORRIDOR C200 AND SOUTH SIDE OF CORRIDOR C201.**
a. VA TO VACATE OFFICES ON EAST SIDE OF C200 & SOUTHSIDE OF C201.
b. GC TO CONSTRUCT TEMPORARY PARTITION PARALLEL TO EAST SIDE OF C200.
c. GC TO USE C201 SOUTH CORRIDOR WALL AND CONSTRUCTED TEMPORARY PARTITIONS TO ISOLATE OFFICES 200, 201, AND PAT. ROOM 202 AND TOILET 202A.
d. GC TO COMMENCE EAST SIDE AND SOUTH SIDE RENOVATIONS TO 2.
e. VA OCCUPIES NEW OFFICES ON EAST SIDE OF 2 AND CREATES NEW CORRIDOR AT SOUTH SIDE.
f. ABOVE CEILING WORK ON 2 INDICATED ABOVE SHALL OCCUR AFTER HOURS, ROOM BY ROOM, AND DEPARTMENT BY DEPARTMENT.
B. **2B. RENOVATE WEST SIDE OF CORRIDOR C200 AND NORTH SIDE OF CORRIDOR C201.**
a. VA TO VACATE OFFICES ON WEST SIDE OF C200 & NORTH SIDE OF C201.
b. GC TO CONSTRUCT TEMPORARY PARTITION PARALLEL TO WEST SIDE OF C200.
c. GC TO USE C201 CONSTRUCT TEMPORARY PARTITIONS TO ISOLATE WAITING 226 AND TOILET 226A.
d. GC TO COMMENCE WEST SIDE AND NORTH SIDE RENOVATIONS TO 2.
e. VA OCCUPIES NEW OFFICES ON WEST SIDE OF 2 AND CREATES NEW CONSULT ROOM, FAMILY TOILET AND PANTRY.
f. ABOVE CEILING WORK ON 2 INDICATED ABOVE SHALL OCCUR AFTER HOURS, ROOM BY ROOM, AND DEPARTMENT BY DEPARTMENT.
- IMPACTED AREAS UNDER 2 RENOVATION - RADIOLOGY EXAM ROOMS, PROSTHETIC STORAGE, PHARMACY, STERILE FLUIDS, IV ANTEROOM CLEAN STORAGE, & INTRAVENOUS ADMIXTURES.**

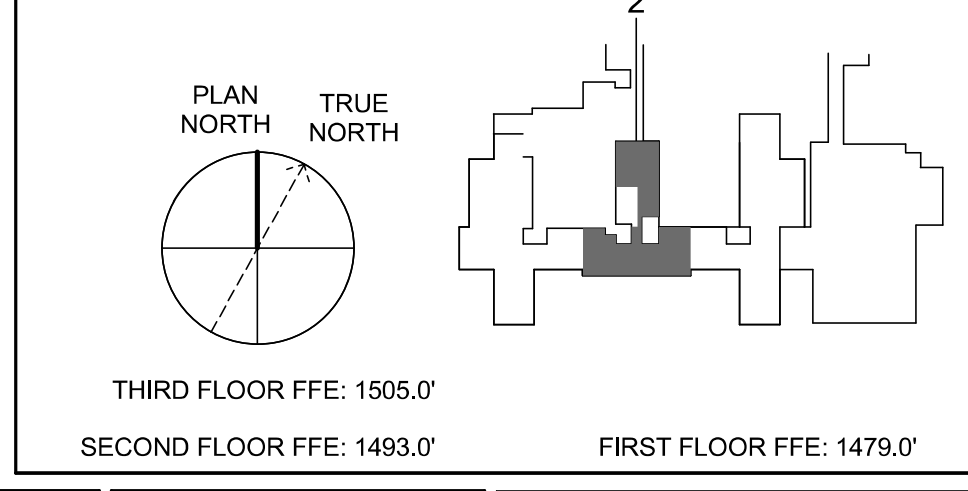
SYMBOLS LEGEND

- DENOTES AREAS OF WORK ABOVE CEILING
 INDICATES AREA NOT IN SCOPE OF WORK
 PHASE 1
 PHASE 2

PARTITION GRAPHICS

- PARTITION PHASING**
— EXISTING ELEMENT TO REMAIN
--- EXISTING ELEMENT TO BE DEMOLISHED
- - - - - TEMPORARY 1-HOUR RATED ELEMENT TO BE CONSTRUCTED AND DEMOLISHED IN SAME PHASE
- PARTITION RATING**
— NO RATING
 SMOKE RESISTIVE PARTITION - NON RATED
 1 HOUR FIRE BARRIER
 1 HOUR FIRE/SMOKE BARRIER
 2 HOUR FIRE BARRIER
 2 HOUR FIRE/ SMOKE BARRIER

KEY PLAN



Revisions:		
No.	Description	Date

CONSULTANTS:

BRITT, PETERS AND ASSOCIATES
CONSULTING ENGINEERS
8701 RED OAK BLVD, SUITE 500
CHARLOTTE, NC 28217
PHONE: 704.522.0405
WWW.BRITTPETERS.COM

Seal:

ARCHITECT / ENGINEERS:

HARRELL DESIGN GROUP, P.C.
8016 TOWER POINT DRIVE
CHARLOTTE, NC 28227
P 704.814.1320
F 704.321.0833
HDG PROJECT: 18002
COPYRIGHT © 2023

Drawing Title:
SECOND FLOOR PHASING PLAN - WARD 2 - PHASE 2

Project Phase:
BID DOCUMENTS

FULLY SPRINKLERED

Project Title:
RENOVATE MED SURGE WARDS

Location:
VETERANS HEALTHCARE SYSTEM OF THE OZARKS

Date:
JANUARY 25, 2022

Checked:
JC/LK

Drawn:
GG/DW

Project Number:
564-17-140

Building Number:
1

Drawing Number:
GC123a

Sheet **17** of **162**

Engineering Service

VA U.S. Department of Veterans Affairs