

0

8"

three inches = one foot

A

0

6"

one and one half inches = one foot

B

0

3"

one inch = one foot

2

0

3"

three quarters inch = one foot

C

0

3"

one half inch = one foot

4

0

3"

three eighths inch = one foot

D

0

3"

one quarter inch = one foot

8

0

3"

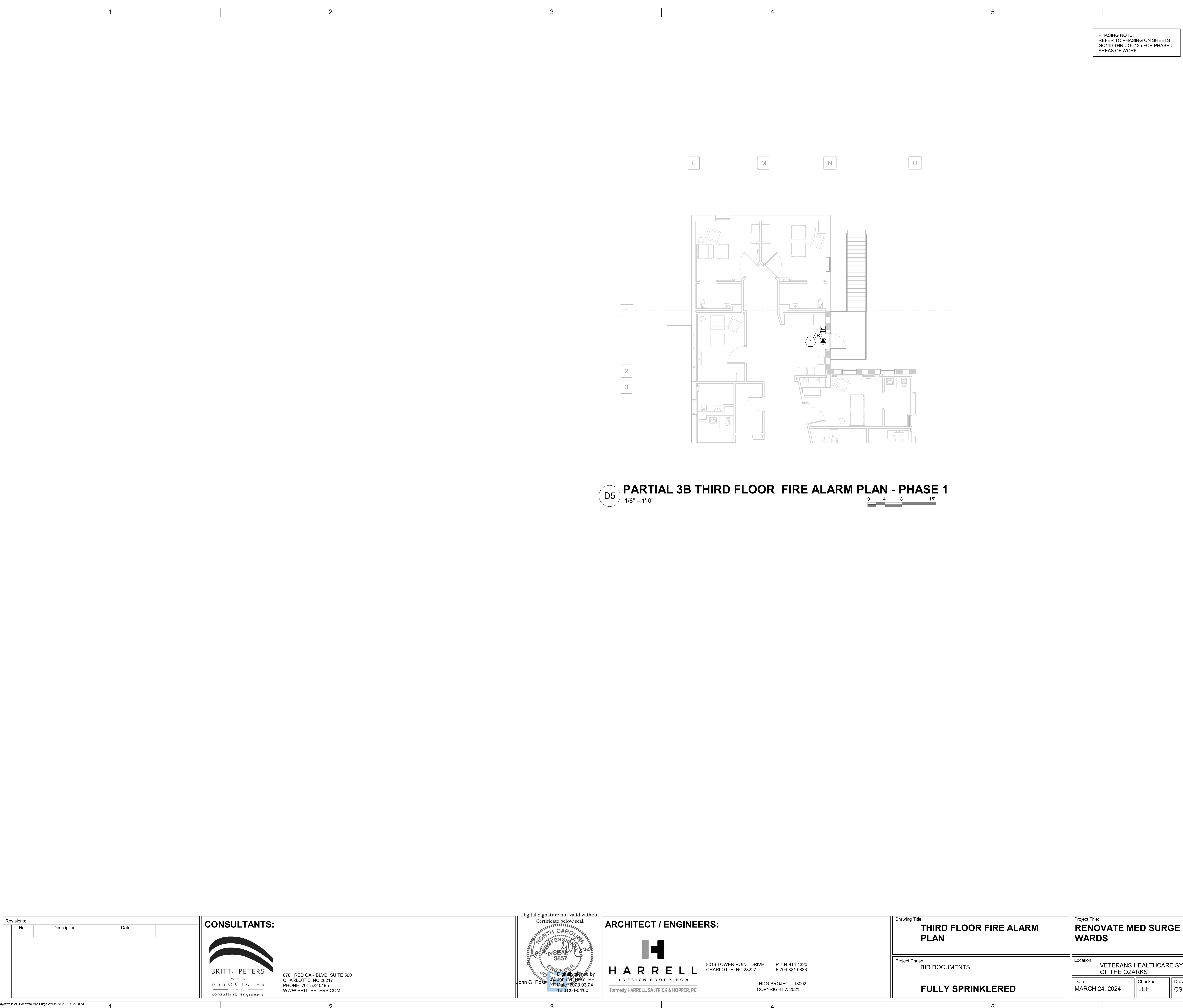
one eighth inch = one foot

16

0

3"

one eighth inch = one foot



GENERAL NOTES

A. FIRE ALARM DEVICES ARE TO BE INSTALLED IN ACCORDANCE WITH NFPA 72.

B. ACTUATION OF ANY SYSTEM INITIATING DEVICE SHALL ACTIVATE ALL INDICATING DEVICES, UNLESS NOTED OTHERWISE.

C. VERIFY COMPONENT TYPES AND QUANTITIES WITH PLAN DRAWINGS.

D. ALL FIRE ALARM WIRING TO BE INSTALLED IN RACEWAYS.

E. PROVIDE ALL REQUIRED POWER SUPPLIES, BOOSTER PANELS, MODULES, ETC. FOR A COMPLETE SYSTEM.

F. FIRE PROTECTION CONTRACTOR TO COORDINATE SPECIFIC WIRING REQUIREMENTS WITH EQUIPMENT MANUFACTURER.

G. PROVIDE A NEW FACP IN THE SECOND FLOOR SPECIAL SYSTEMS ROOM. CONTRACTOR SHALL PROVIDE ALSO A FULLY COMPATIBLE REMOTE ANNUNCIATOR WHERE INDICATED.

H. REFER TO THE SPECIFICATIONS FOR MOUNTING HEIGHTS FOR INITIATING DEVICES AND NOTIFICATION APPLIANCES.

I. SMOKE DETECTORS IN ELEVATOR LOBBIES, AND ELEVATOR SHAFTS SHALL BE PROGRAMMED FOR ELEVATOR RECALL OPERATION. ACTIVATION OF A SMOKE DETECTOR IN THE ELEVATOR SHAFT AND SECONDARY RECALL FLOOR LOBBY SHALL RECALL THE ELEVATOR TO THE PRIMARY RECALL FIRST FLOOR LOBBY. ACTIVATION OF A SMOKE DETECTOR IN THE PRIMARY RECALL FIRST FLOOR LOBBY SHALL RECALL THE ELEVATOR TO THE SECONDARY RECALL SECOND FLOOR LOBBY.

J. REVIEW THE CONSTRUCTION DOCUMENTS OF ALL TRADES FOR PHASING REQUIREMENTS.

K. CONFIRM MOUNTING HEIGHTS WITH ARCHITECTURAL INTERIOR ELEVATIONS PRIOR TO ROUGH-IN.

SHEET KEYNOTES

1. FIRE ALARM RELAY TO SEND SIGNAL TO OVERRIDE CARD READER AND RELEASE LOCK.

2. PROVIDE NEW DUCT SMOKE DETECTOR IN AHU DUCTS. EXTEND EXISTING FIRE ALARM SYSTEM AS REQUIRED. NEW DETECTORS SHALL BE OF SIMILAR TYPE AS EXISTING AND COMPATIBLE WITH EXISTING FIRE ALARM SYSTEM. PROVIDE VISUAL INDICATOR FOR DETECTOR IN CEILING DIRECTLY BELOW DETECTOR.

3. PROVIDE NEW DUCT SMOKE DETECTOR FOR TEMPORARY UNIT DUCT WORK. EXTEND EXISTING FIRE ALARM SYSTEM AS REQUIRED. NEW DETECTORS SHALL BE OF SIMILAR TYPE AS EXISTING AND COMPATIBLE WITH EXISTING FIRE ALARM SYSTEM. PROVIDE VISUAL INDICATOR FOR DETECTOR IN CEILING DIRECTLY BELOW DETECTOR.

PARTITION GRAPHICS

PARTITION PHASING

EXISTING ELEMENT TO REMAIN

EXISTING ELEMENT TO BE DEMOLISHED

TEMPORARY 1-HOUR RATED ELEMENT TO BE CONSTRUCTED AND DEMOLISHED IN SAME PHASE

PARTITION RATING

NO RATING

SMOKE RESISTIVE PARTITION - NON RATED

1 HOUR FIRE BARRIER

1 HOUR FIRE/SMOKE BARRIER

2 HOUR FIRE BARRIER

2 HOUR FIRE/ SMOKE BARRIER

KEY PLAN

PLAN NORTH

TRUE NORTH

BASEMENT AREA OF WORK

THIRD FLOOR FFE: 1505.0'

SECOND FLOOR FFE: 1493.0'

FIRST FLOOR FFE: 1479.0'

Revisions:

CONSULTANTS:

BRITT, PETERS AND ASSOCIATES INC. consulting engineers

8701 RED OAK BLVD, SUITE 500 CHARLOTTE, NC 28217 PHONE: 704.522.0405 WWW.BRITTPETERS.COM

Digital Signature not valid without Certificate below seal.

JOHN G. ROSS, PE

12/01/04-04/00'

ARCHITECT / ENGINEERS:

HARRELL DESIGN GROUP, P.C.

8016 TOWER POINT DRIVE CHARLOTTE, NC 28227 P 704.814.1320 F 704.321.0833

HDG PROJECT: 18002 COPYRIGHT © 2021

Drawing Title:

THIRD FLOOR FIRE ALARM PLAN

Project Phase:

BID DOCUMENTS

FULLY SPRINKLERED

Project Title:

RENOVATE MED SURGE WARDS

Location:

VETERANS HEALTHCARE SYSTEM OF THE OZARKS

Date:

MARCH 24, 2024

Checked:

LEH

Drawn:

CSR

Project Number:

564-17-140

Building Number:

1

Drawing Number:

FA103

Sheet

89 of 162

Engineering Service

VETERANS HEALTH CARE SYSTEM OF THE OZARKS

VA U.S. Department of Veterans Affairs