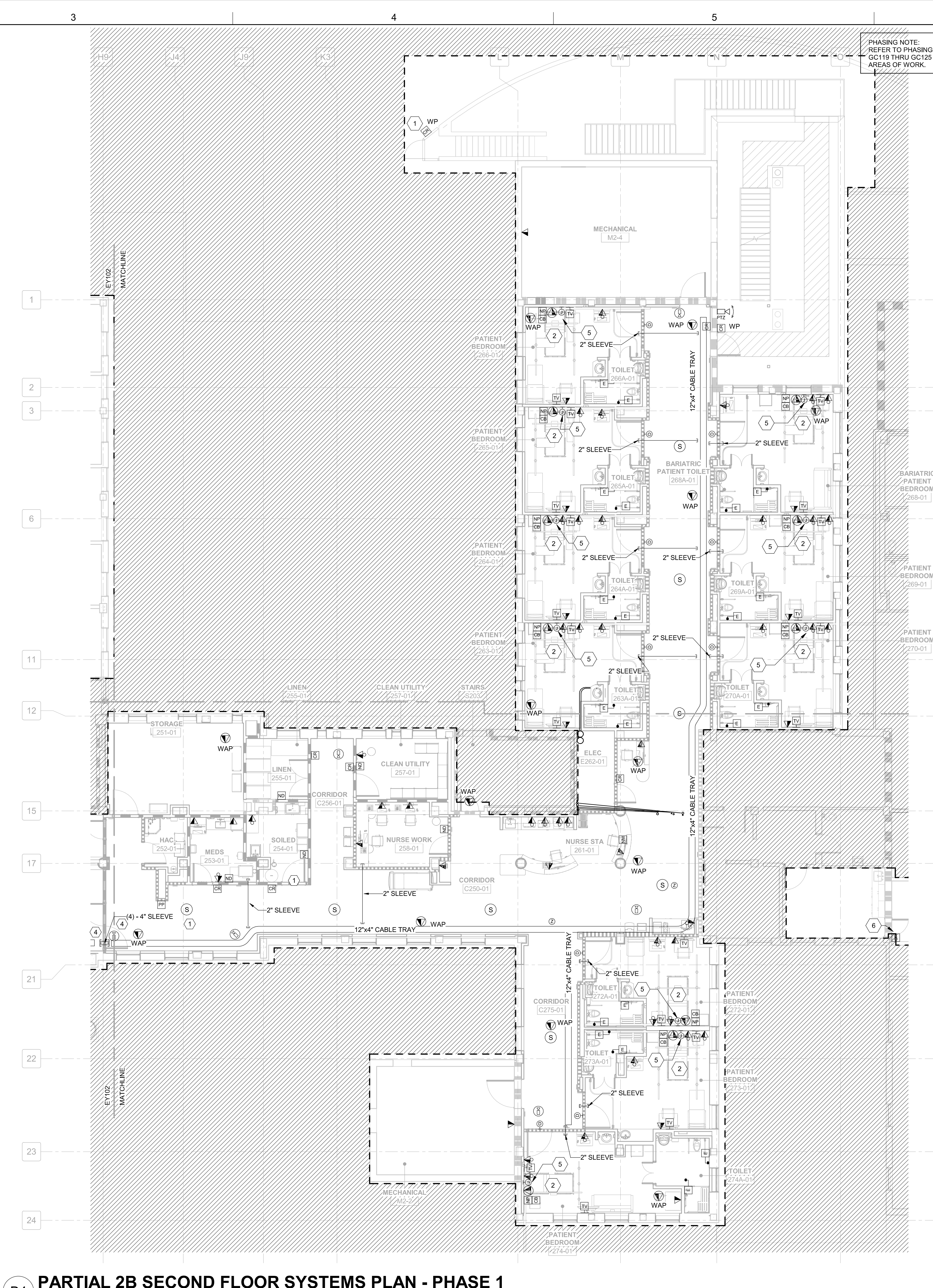
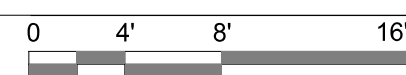


D1 PARTIAL 2 SECOND FLOOR SYSTEMS PLAN - PHASE 1  
1/8" = 1'-0"



D4 PARTIAL 2B SECOND FLOOR SYSTEMS PLAN - PHASE 1  
1/8" = 1'-0"



## GENERAL NOTES

- REFER TO ARCHITECTURAL REFLECTED CEILING PLAN FOR EXACT LOCATION OF ALL CEILING MOUNTED FIXTURES AND DEVICES. CONFIRM TELEPHONE/DATA OUTLET LOCATIONS AND MOUNTING HEIGHTS WITH ARCHITECTURAL INTERIOR ELEVATIONS PRIOR TO ROUGH-IN.
- CONFIRM TV OUTLET LOCATIONS AND MOUNTING HEIGHT WITH ARCHITECTURAL INTERIOR ELEVATIONS PRIOR TO ROUGH-IN.
- COORDINATE LOCATION AND MOUNTING HEIGHT OF ALL DOOR SECURITY DEVICES AND HARDWARE (CARD READERS, ETC.) WITH ARCHITECTURAL FLOOR PLANS AND INTERIOR ELEVATIONS PRIOR TO ROUGH-IN.
- REVIEW THE CONSTRUCTION DOCUMENTS OF ALL TRADES FOR PHASING REQUIREMENTS.
- NEW VOICE AND DATA CABLES PATCH INTO NEW IT ROOM 2C106 IN UNIT 2.
- PACS, VASS, CATV AND OVERHEAD PAGING SYSTEM SPEAKERS TIE-IN TO NEW SPECIAL SYSTEMS ROOM 2C105 IN UNIT 2.
- PRIOR TO SUBMISSION, VERIFY FINAL CAMERA POSITIONS WITH LOCAL CAMPUS SAFETY OFFICER. INCLUDE 3 ADDITIONAL CAMERAS AND INSTALLATION TO BE INSTALLED IN THE PHASE AREA AT LOCATIONS TO BE DETERMINED BY COR.

## SHEET KEYNOTES

- PEDESTAL MOUNTED CARD READ. COORDINATE EXACT LOCATION WITH HARDWARE PROVIDER. VERIFY EXACT CONTROLS WITH STATION STANDARDS.
- ABOVE CEILING JUNCTION BOXES FOR ELECTRICAL DEVICES SHOWN. SEE ARCHITECTURAL DETAIL D6/AE405 FOR HEAD WALL DETAILS.
- PROVIDE J-HOOKS 9" ON CENTER IN HALLWAY FROM CONDUIT SLEEVES TO IT/SPECIAL SYSTEMS ROOMS FOR TEMPORARY CABLE SUPPORTS. CABLES SHALL BE SUPPORTED AND PROTECTED THROUGHOUT DEMOLITION AND CONSTRUCTION OF PHASE 2. CABLE TO BE TRANSFERRED TO TRAY AFTER CONSTRUCTION OF PHASE 2, AND J-HOOKS TO BE REMOVED.
- PHASE 2 RACEWAYS AND CONDUITS FOR POWER, LIGHTING, AND SPECIAL SYSTEMS LOCATED WITHIN PHASE 1 AREA AND SERVING PHASE 2 DEVICES SHALL BE INSTALLED IN PHASE 1.
- 37 PIN BED CONNECTOR.
- PROVIDE TEMPORARY CARD READER UNTIL DOOR IS DEMOLISHED DURING FINAL PHASE.

## PARTITION GRAPHICS

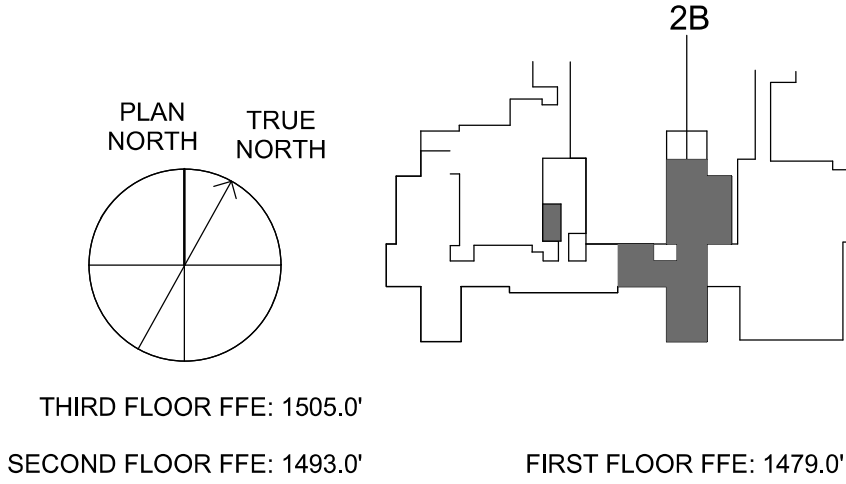
### PARTITION PHASING

- EXISTING ELEMENT TO REMAIN
- EXISTING ELEMENT TO BE DEMOLISHED
- TEMPORARY 1-HOUR RATED ELEMENT TO BE CONSTRUCTED AND DEMOLISHED IN SAME PHASE

### PARTITION RATING

- NO RATING
- SMOKE RESISTIVE PARTITION - NON RATED
- 1 HOUR FIRE BARRIER
- 1 HOUR FIRE/SMOKE BARRIER
- 2 HOUR FIRE BARRIER
- 2 HOUR FIRE/ SMOKE BARRIER

## KEY PLAN

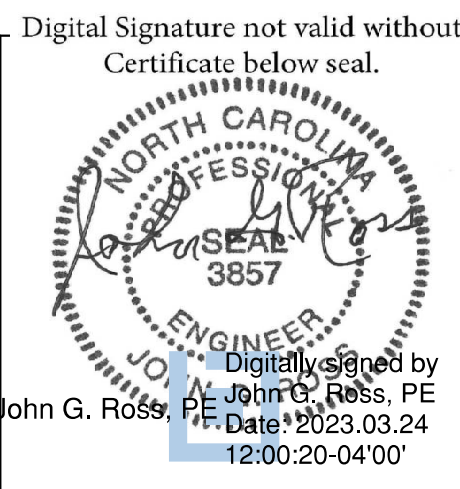


Revisions:		
No.	Description	Date

### CONSULTANTS:



8701 RED OAK BLVD, SUITE 500  
CHARLOTTE, NC 28217  
PHONE: 704.522.0405  
WWW.BRITTPETERS.COM



### ARCHITECT / ENGINEERS:



8016 TOWER POINT DRIVE  
CHARLOTTE, NC 28227  
P 704.814.1320  
F 704.321.0833  
HDG PROJECT: 18002  
COPYRIGHT © 2021

Drawing Title:

PARTIAL 2B SECOND FLOOR  
SYSTEMS PLAN - PHASE 1

Project Phase:

BID DOCUMENTS

FULLY SPRINKLERED

Project Title:

RENOVATE MED SURGE  
WARDS

Location:

VETERANS HEALTHCARE SYSTEM  
OF THE OZARKS

Date:

MARCH 24, 2024

Checked:

LEH

Drawn:

CSR

Project Number:

564-17-140

Building Number:

1

Drawing Number:

EY101

Sheet 153 of 162

Engineering  
Service



VA U.S. Department  
of Veterans Affairs