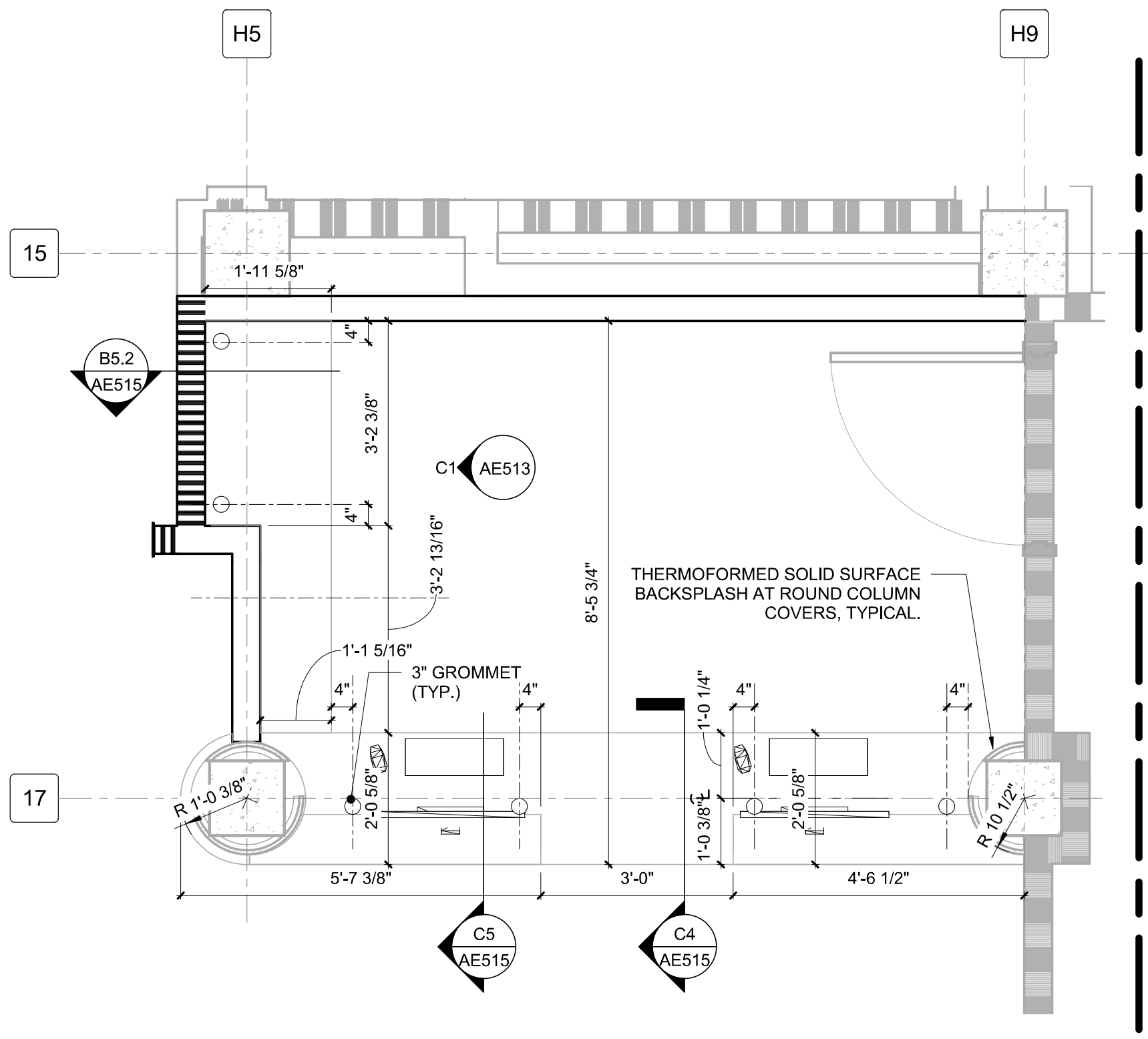
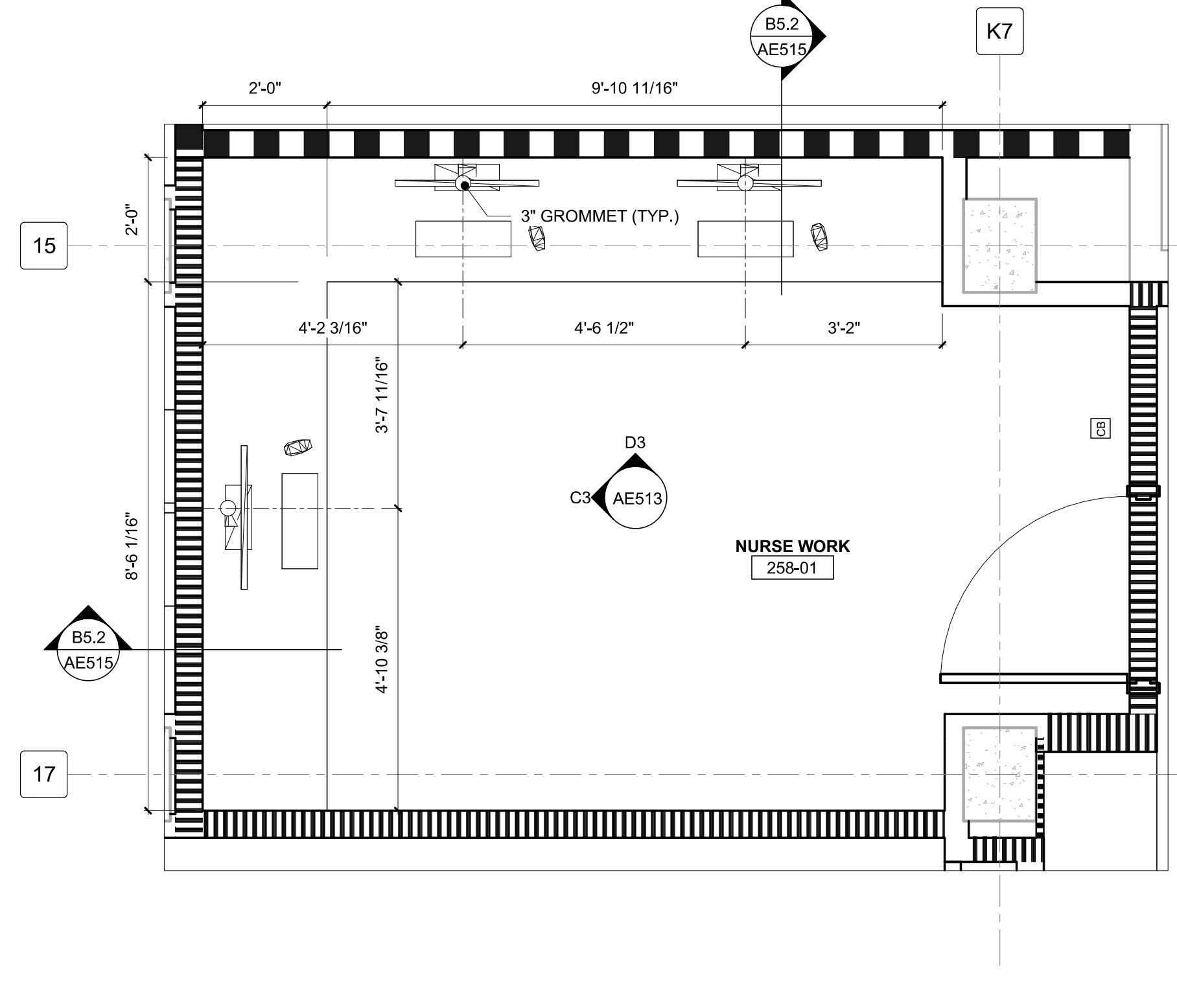


GENERAL SHEET NOTES

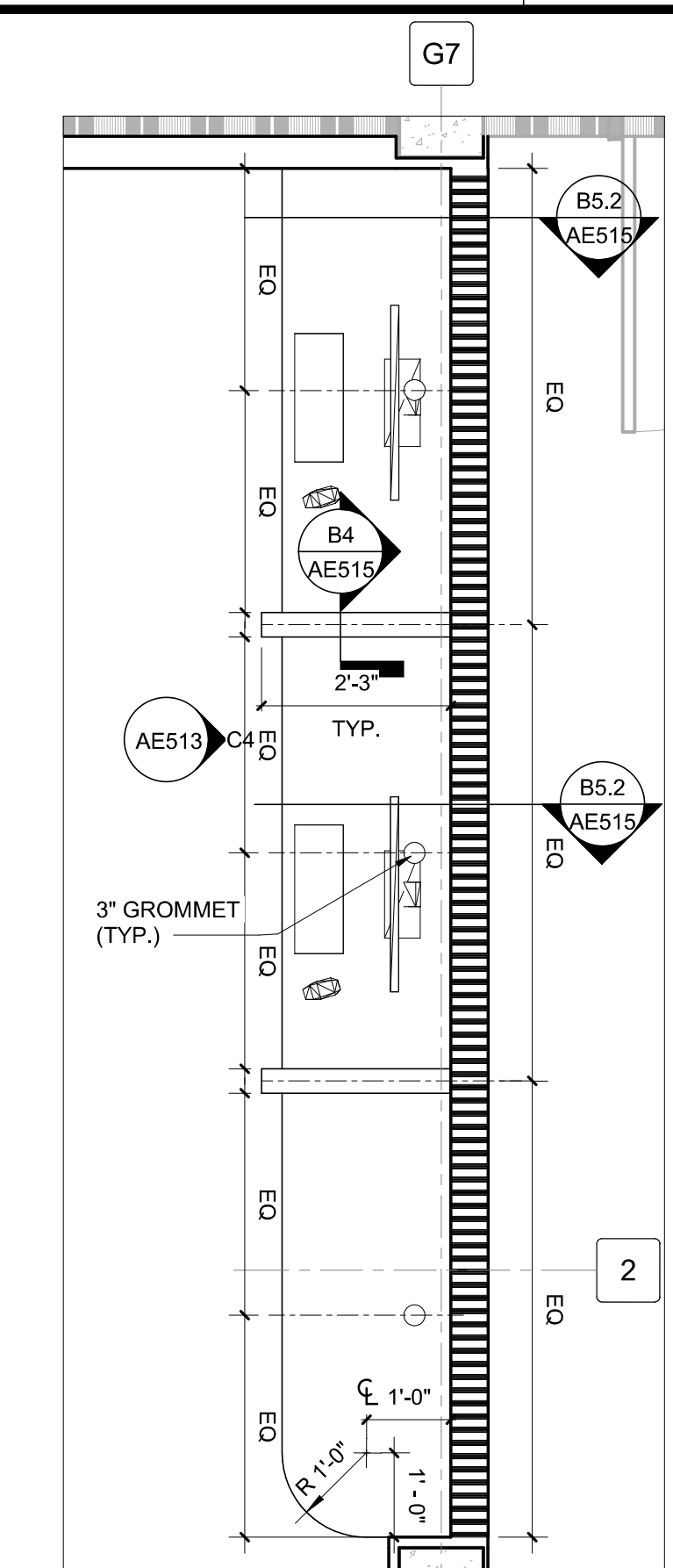
- A. CONTRACTOR TO FIELD VERIFY MEASUREMENTS, BEFORE FABRICATING ANY MILLWORK / COUNTERTOPS AND BRING ANY DISCREPANCIES TO THE ATTENTION OF THE ARCHITECT IN WRITING.
- B. FOR TYPICAL NOTES, SEE SHEET A1001 FOR INFORMATION.
- NOTE: STATION WILL FURNISH TEAMWORK FURNISHINGS THROUGH ACTIVATION.



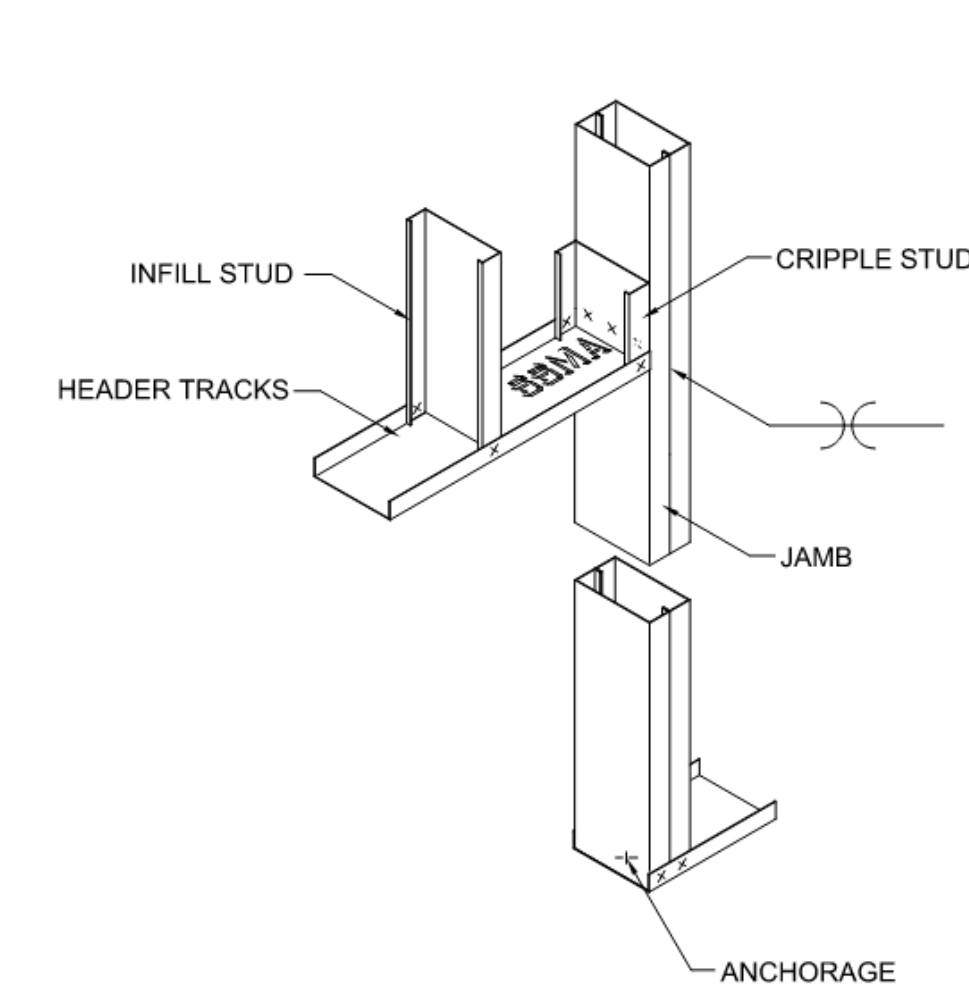
A1 MILLWORK @ CONCIERGE - PLAN
1/2" = 1'-0"



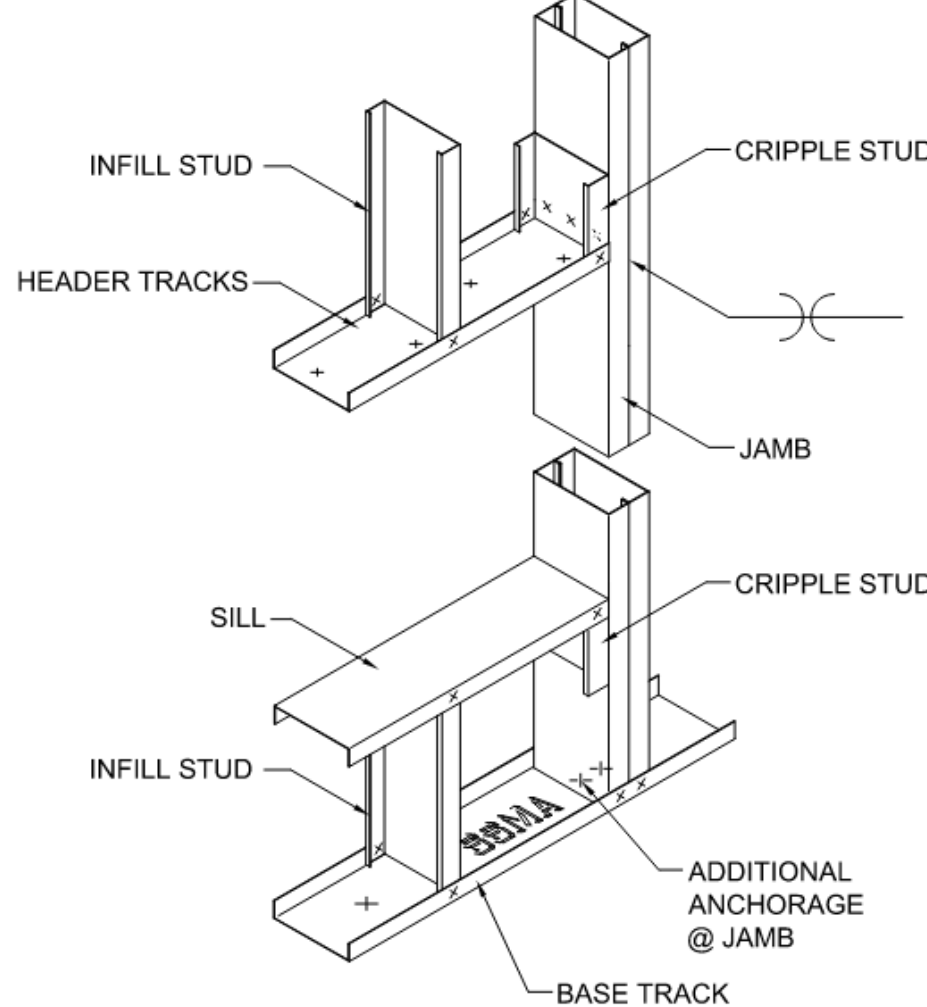
A3 MILLWORK @ NURSE WORK - PLAN
1/2" = 1'-0"



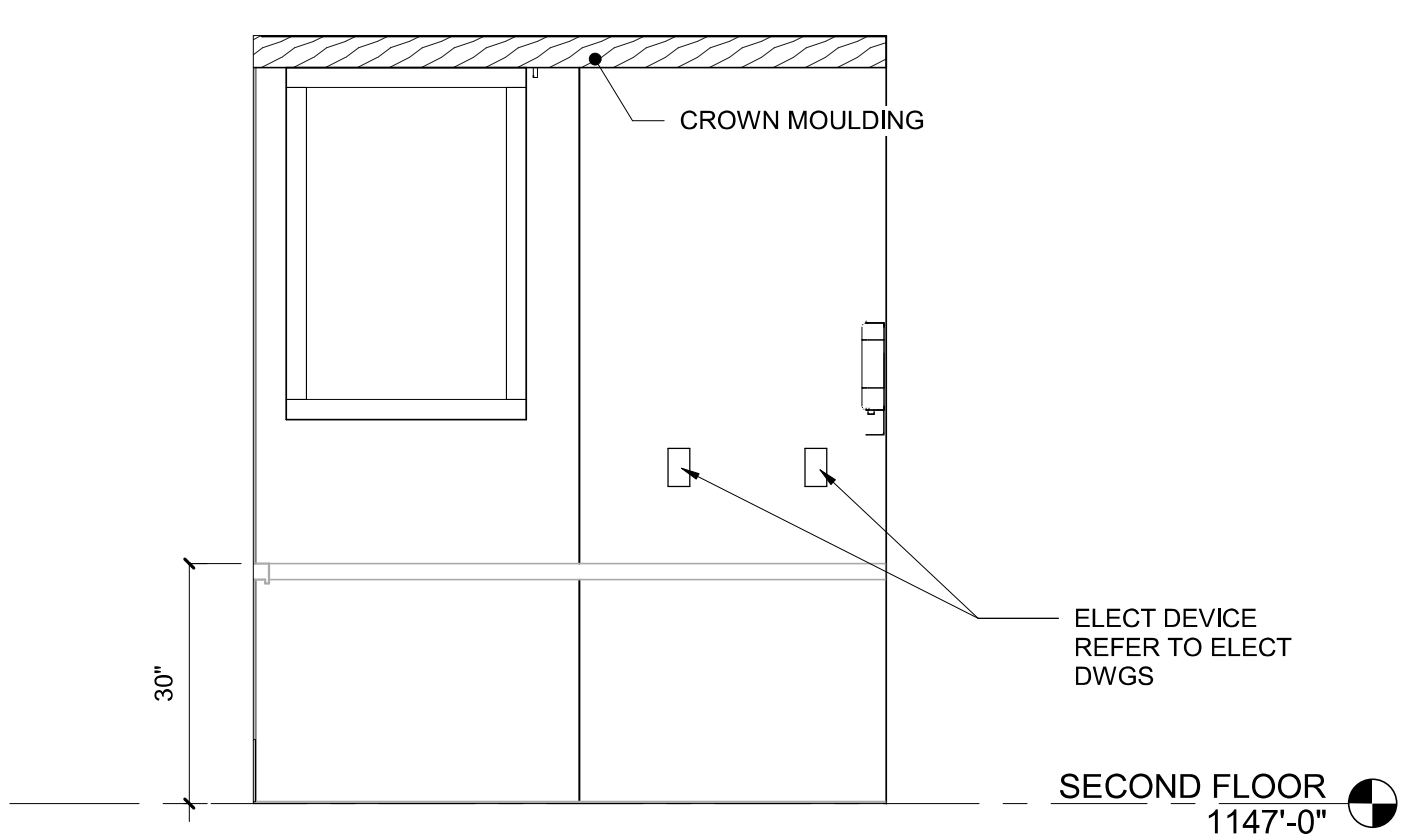
B4 MILLWORK @ TEAMWORK - PLAN
1/2" = 1'-0"



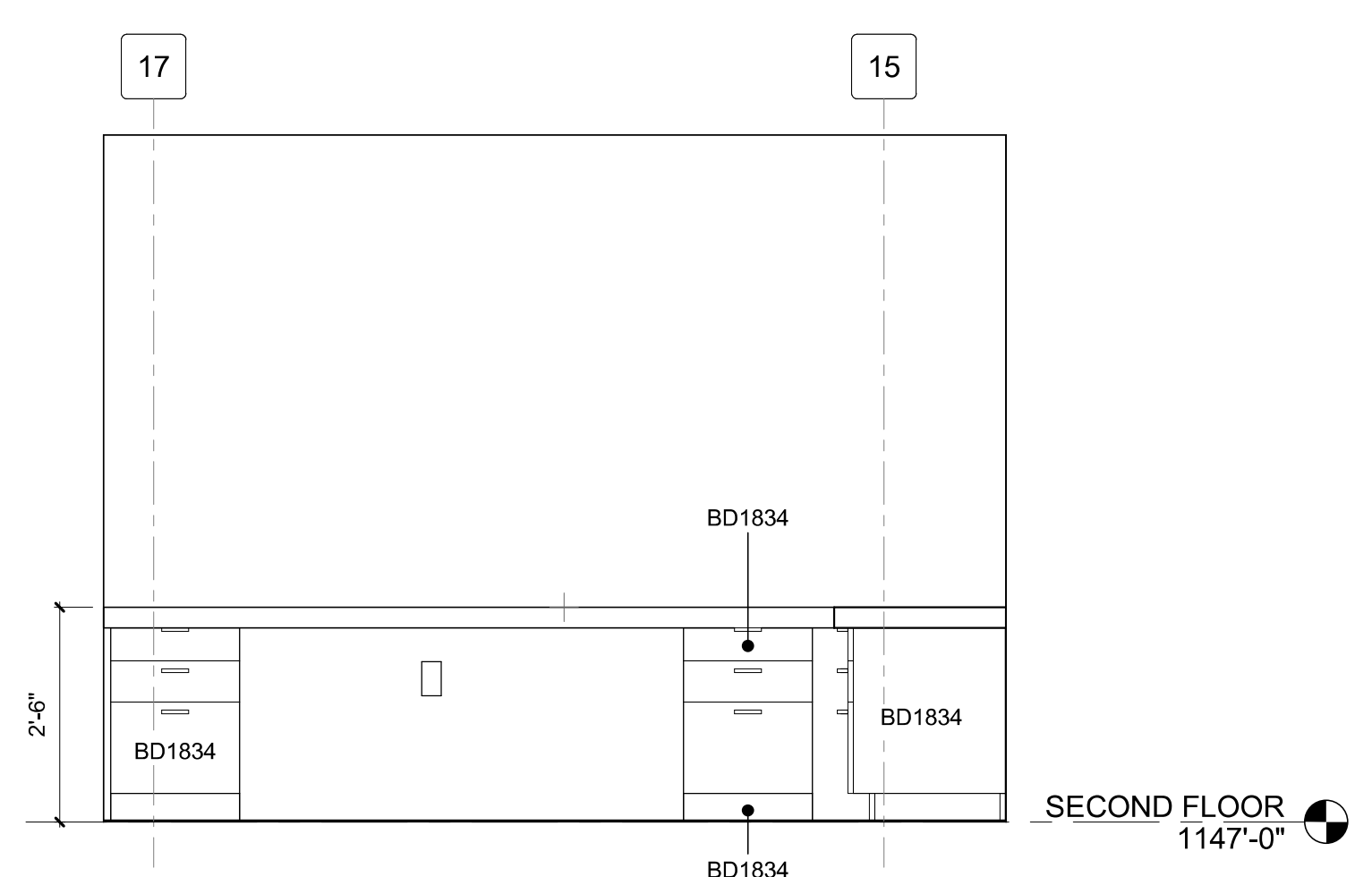
B5 DOOR FRAMING DETAIL
NOT TO SCALE



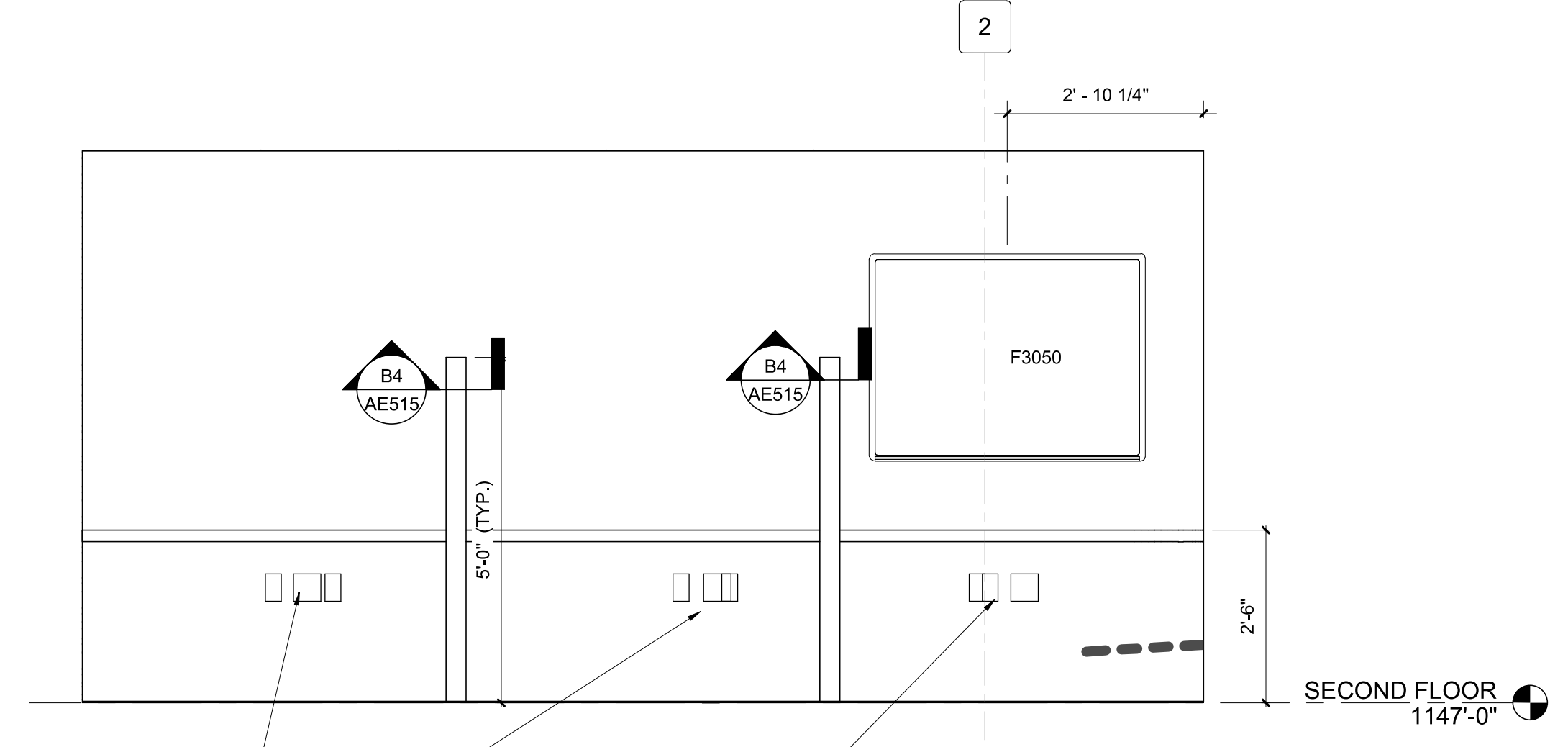
B6 WINDOW FRAMING DETAIL
NOT TO SCALE



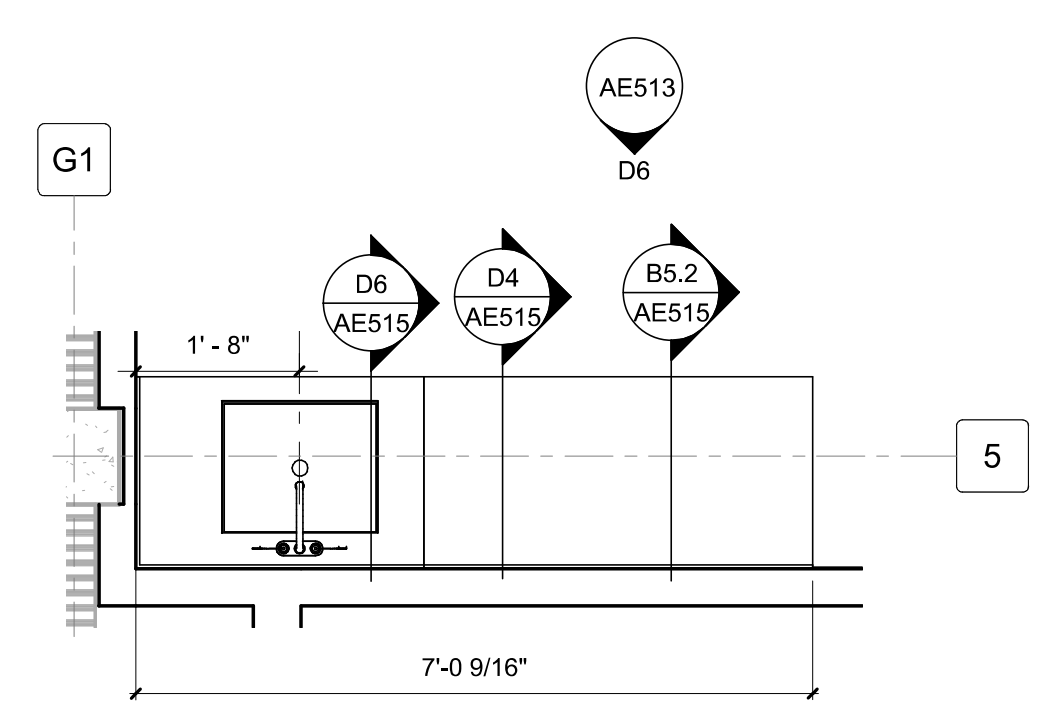
C1 MILLWORK @ CONCIERGE - ELEVATION
1/2" = 1'-0"



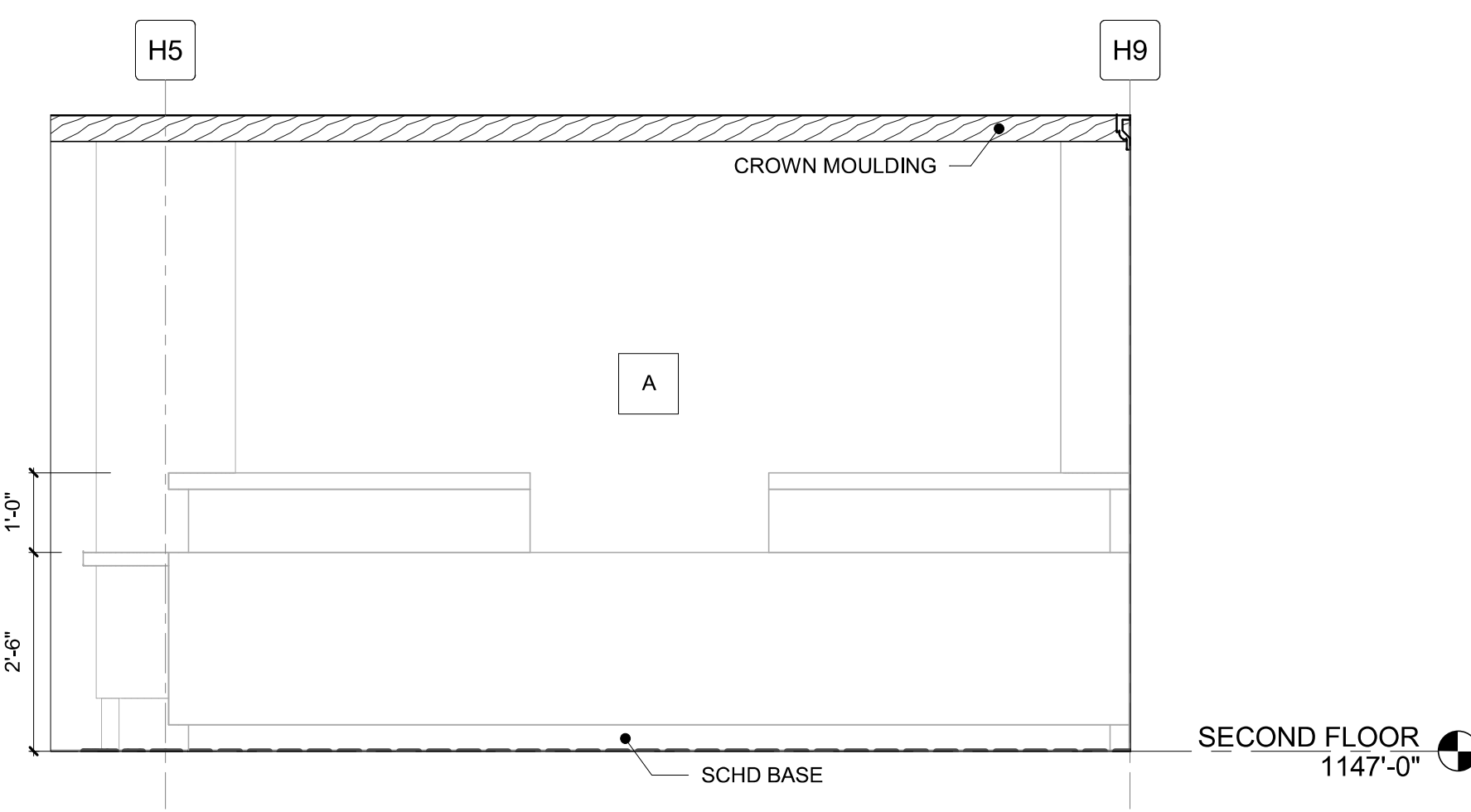
C3 MILLWORK @ NURSE WORK - ELEVATION
1/2" = 1'-0"



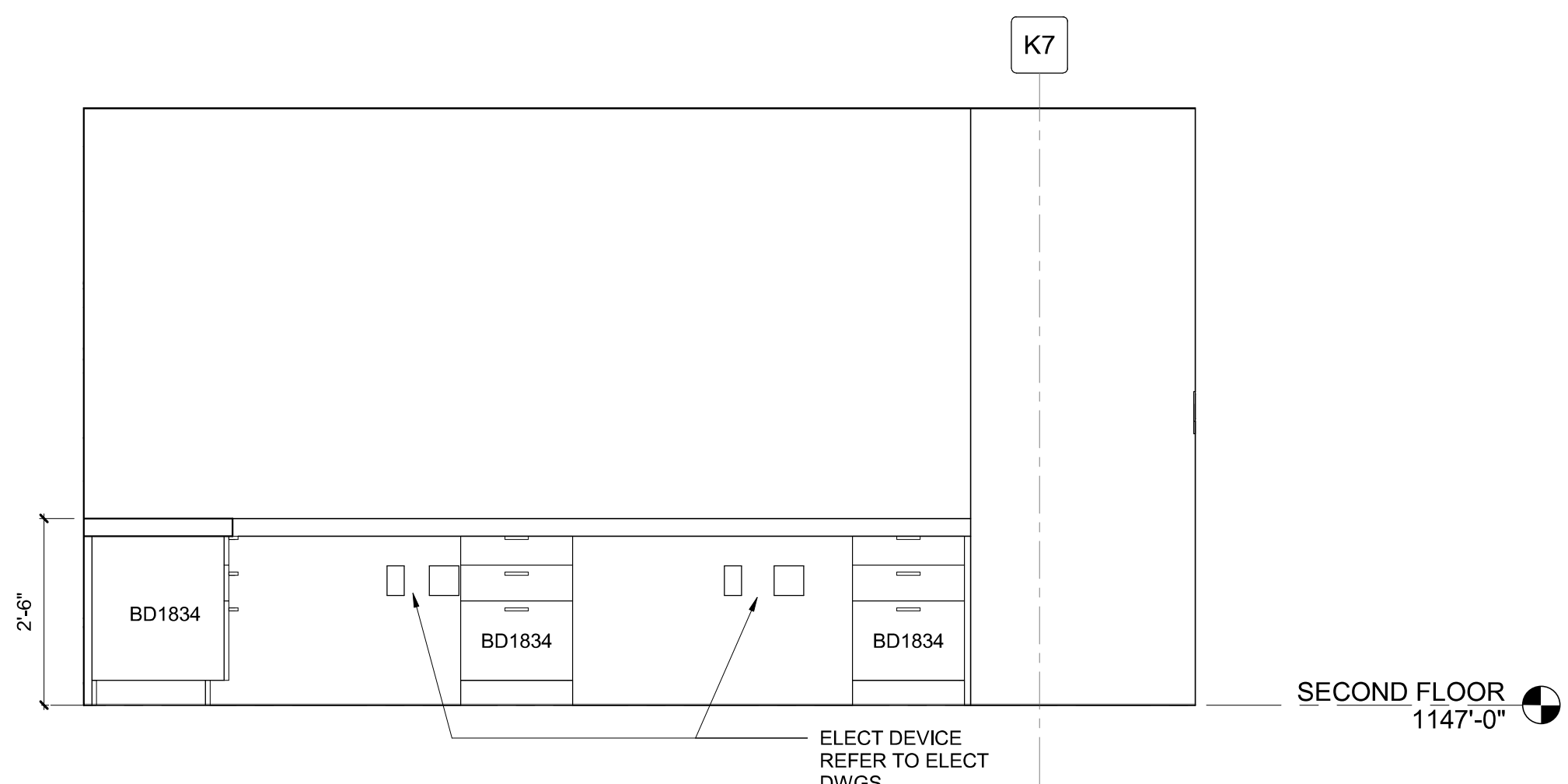
C4 MILLWORK @ TEAMWORK - ELEVATION
1/2" = 1'-0"



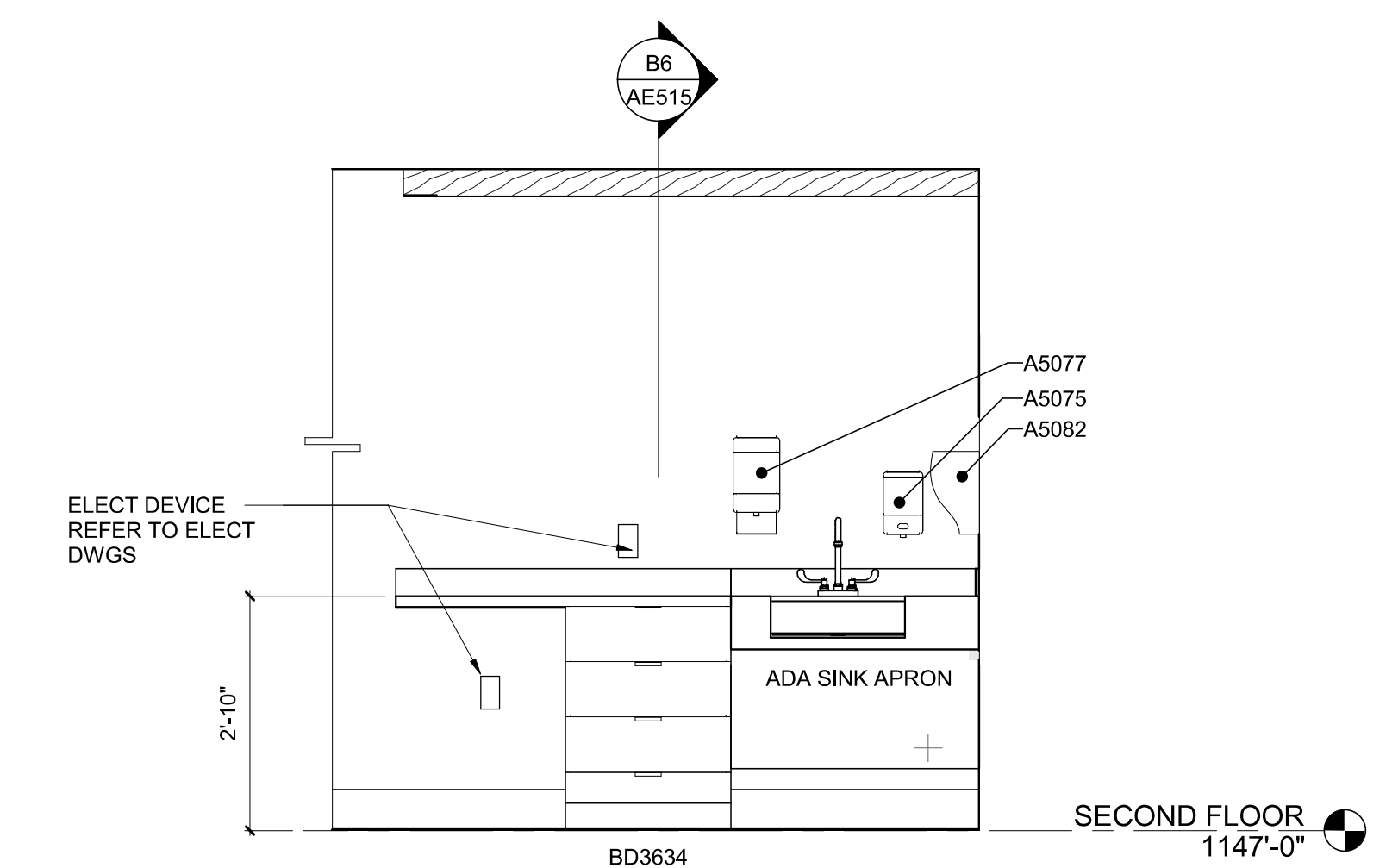
C6 MILLWORK @ LACTATION - PLAN
1/2" = 1'-0"



D1 MILLWORK @ CONCIERGE - ELEVATION
1/2" = 1'-0"



D3 MILLWORK @ NURSE WORK - ELEVATION
1/2" = 1'-0"



D6 MILLWORK @ LACTATION - ELEVATION
1/2" = 1'-0"

Revisions:		
No.	Description	Date

CONSULTANTS:

BRITT, PETERS AND ASSOCIATES
CONSULTING ENGINEERS

8701 RED OAK BLVD, SUITE 500
CHARLOTTE, NC 28217
PHONE: 704.522.0405
WWW.BRITTPETERS.COM

Seal:

Digital Signature not valid without Certificate below seal.

CONYAN & CO.
REGISTERED PROFESSIONAL ENGINEER
11080 IVY
CHARLOTTE, NC

ARCHITECT / ENGINEERS:

HARRELL DESIGN GROUP, P.C.

8016 TOWER POINT DRIVE
CHARLOTTE, NC 28227
P 704.814.1320
F 704.321.0833

HG PROJECT: 18002
COPYRIGHT © 2023

Drawing Title:

ENLARGED CASEWORK PLANS

Project Phase:

BID DOCUMENTS

FULLY SPRINKLERED

Project Title:

RENOVATE MED SURGE WARDS

Location:

VETERANS HEALTHCARE SYSTEM OF THE OZARKS

Date:

MARCH 24, 2024

Checked:

TR

Drawn:

MS

Project Number:

564-17-140

Building Number:

1

Drawing Number:

AE513

Sheet 70 of 162

Engineering Service

VETERANS HEALTH CARE SYSTEM OF THE OZARKS

VA U.S. Department of Veterans Affairs