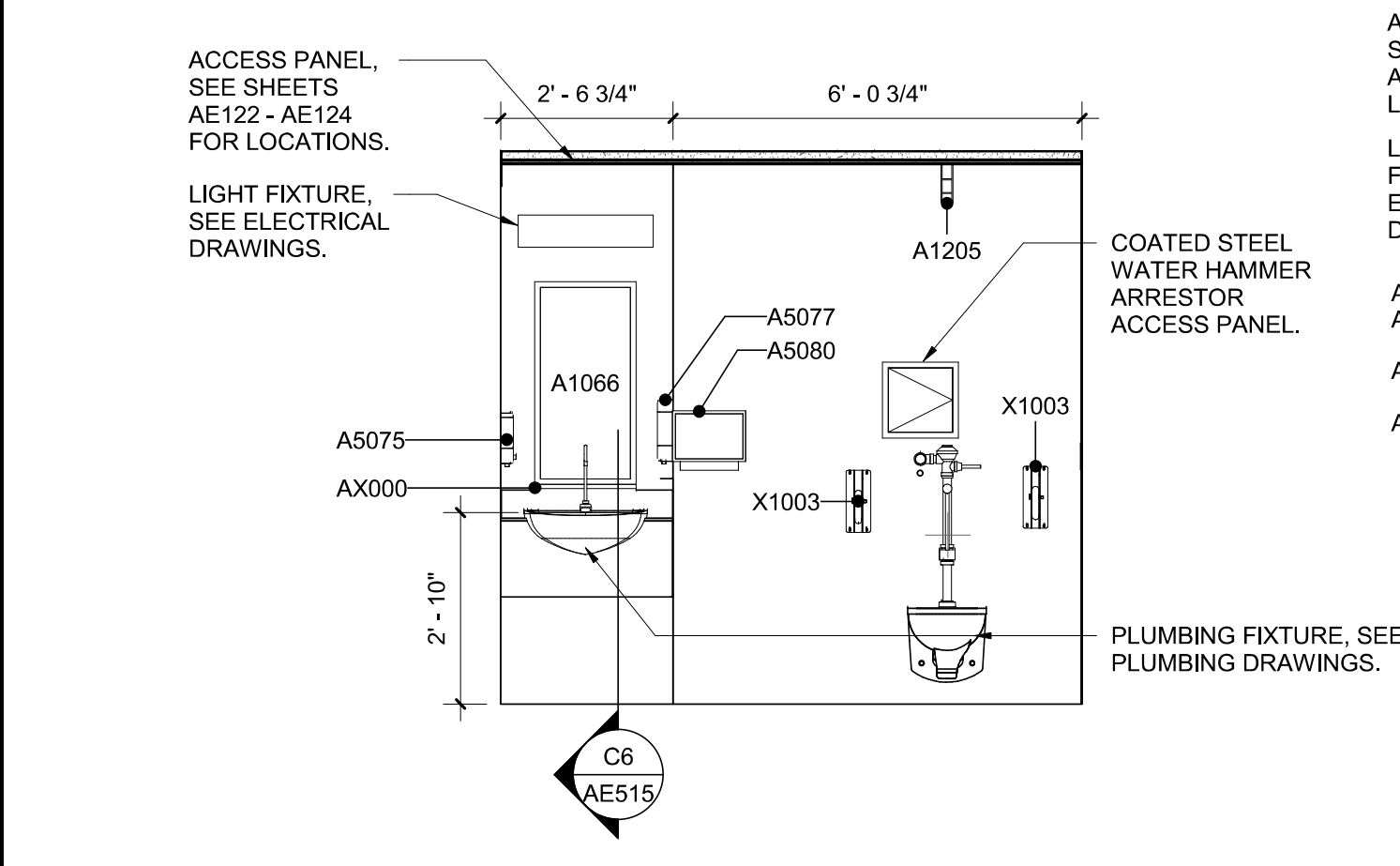
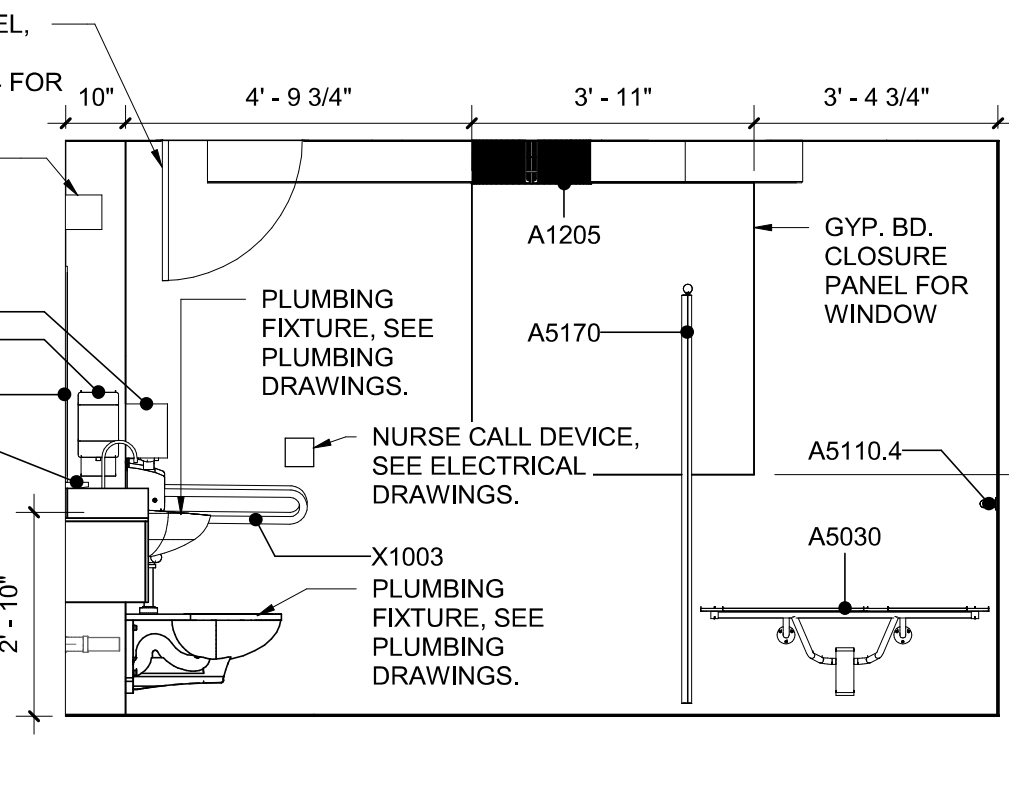


three inches = one foot
one and one half inches = one foot
one inch = one foot
one half inch = one foot
three quarters inch = one foot
one quarter inch = one foot
one eighth inch = one foot
one sixteenth inch = one foot

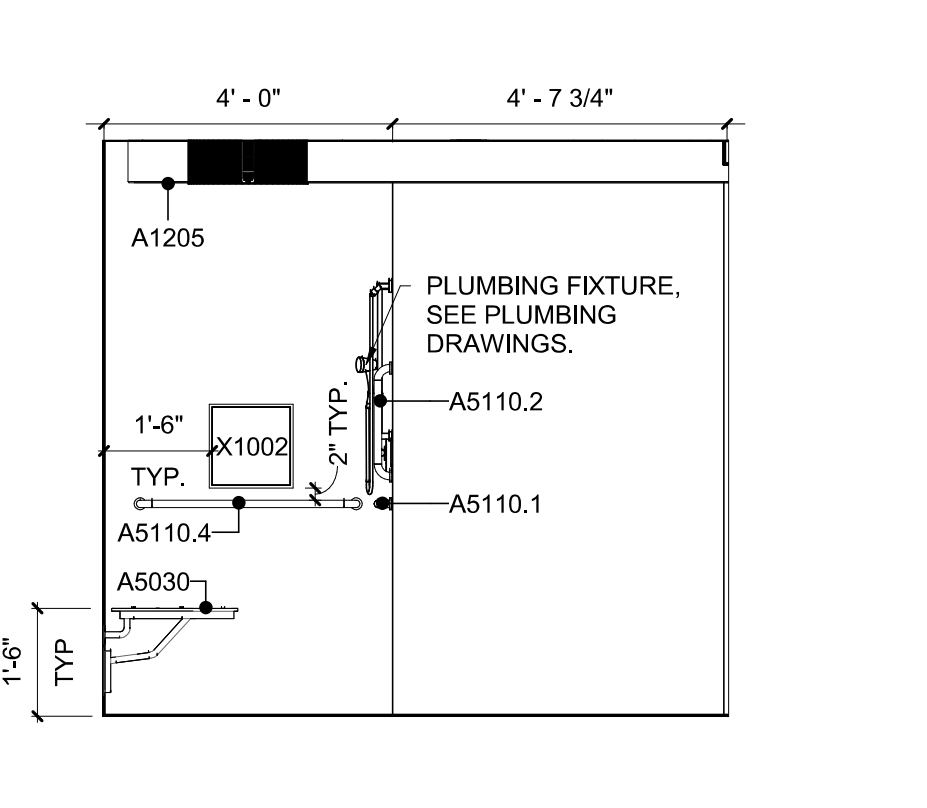
A1 INTERIOR ELEVATION - NORTH TYPICAL
3/8" = 1'-0"



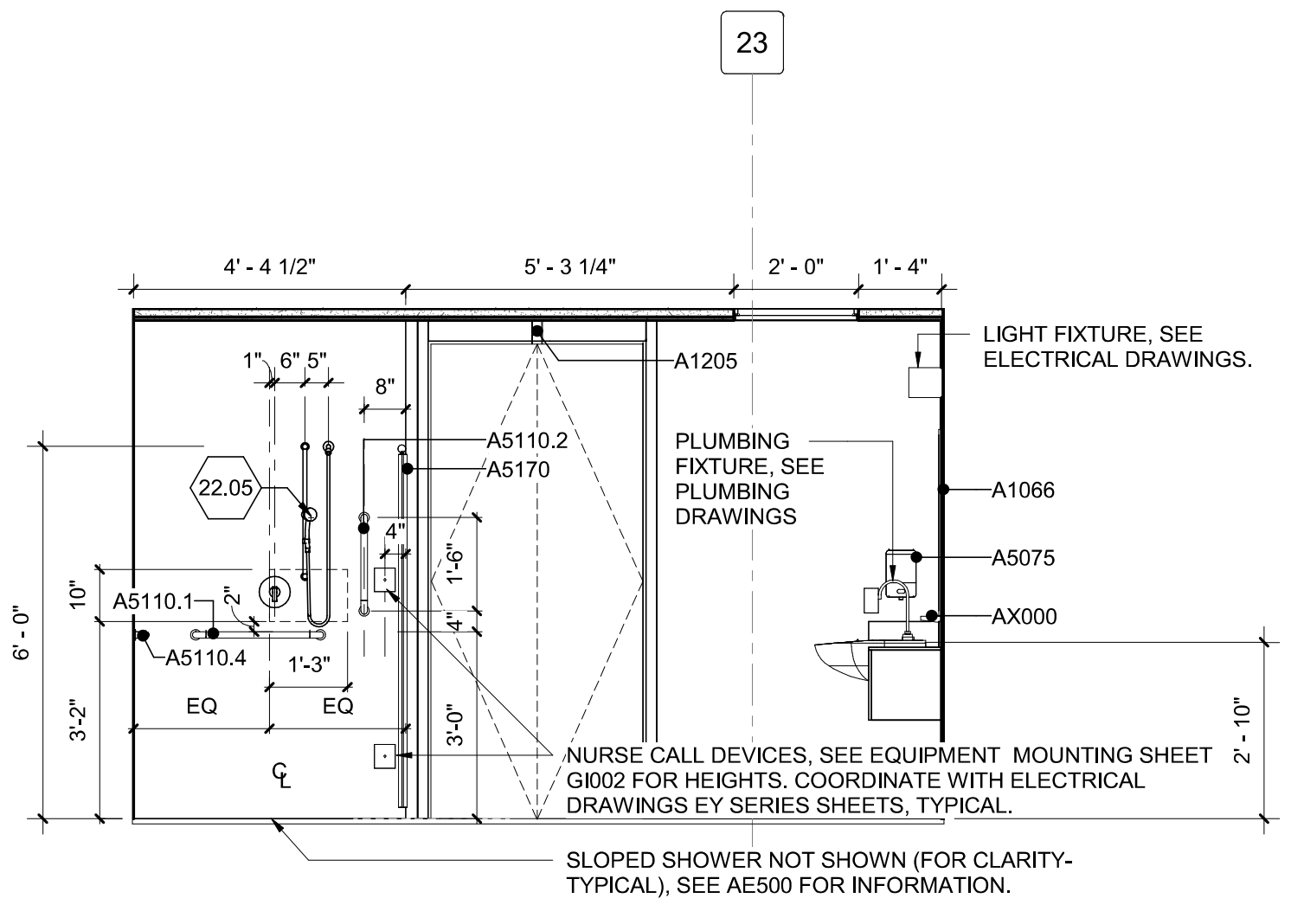
A2 TOILET ELEVATION - EAST TYPICAL
3/8" = 1'-0"



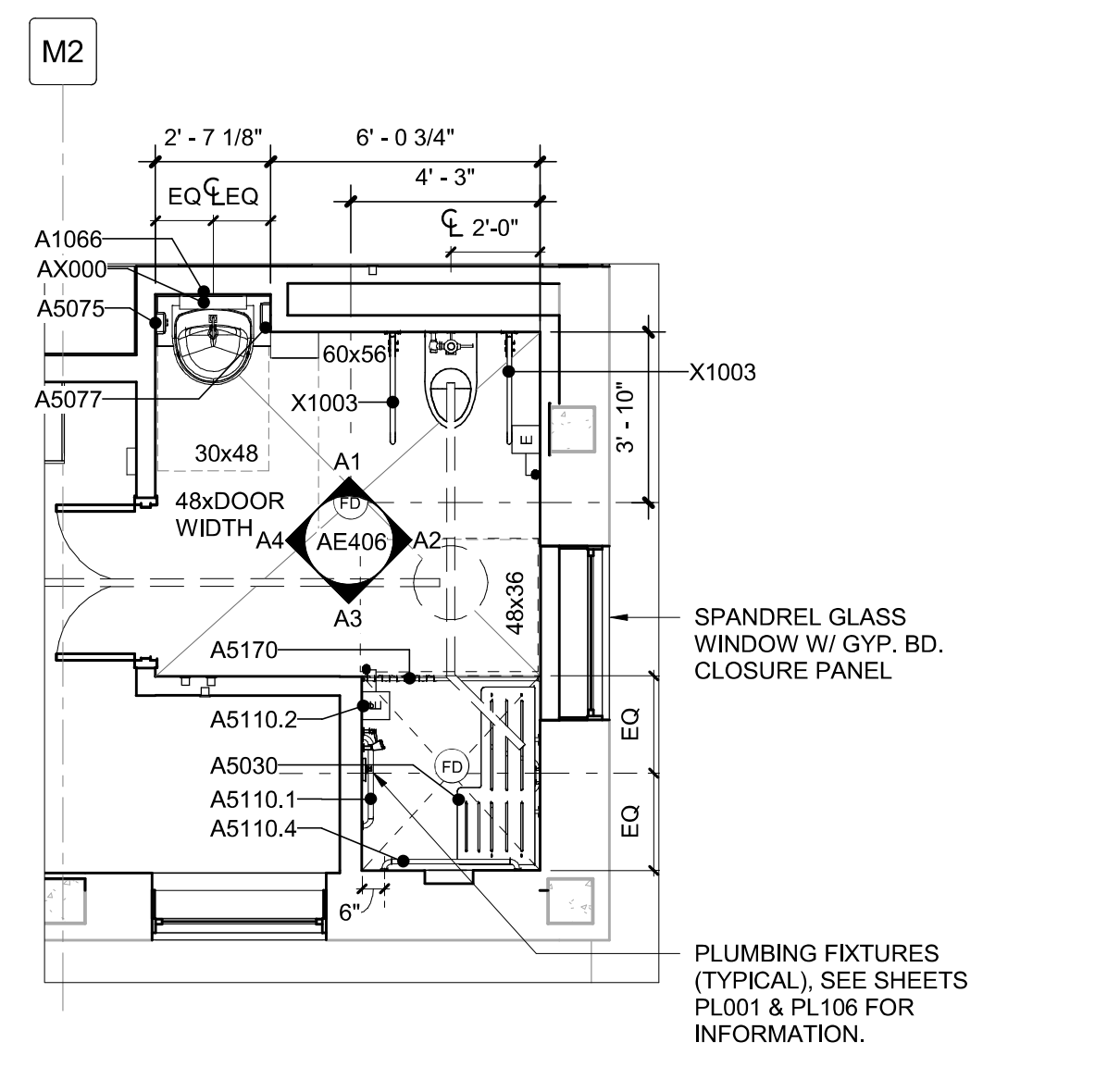
A3 INTERIOR ELEVATION - SOUTH TYPICAL
3/8" = 1'-0"



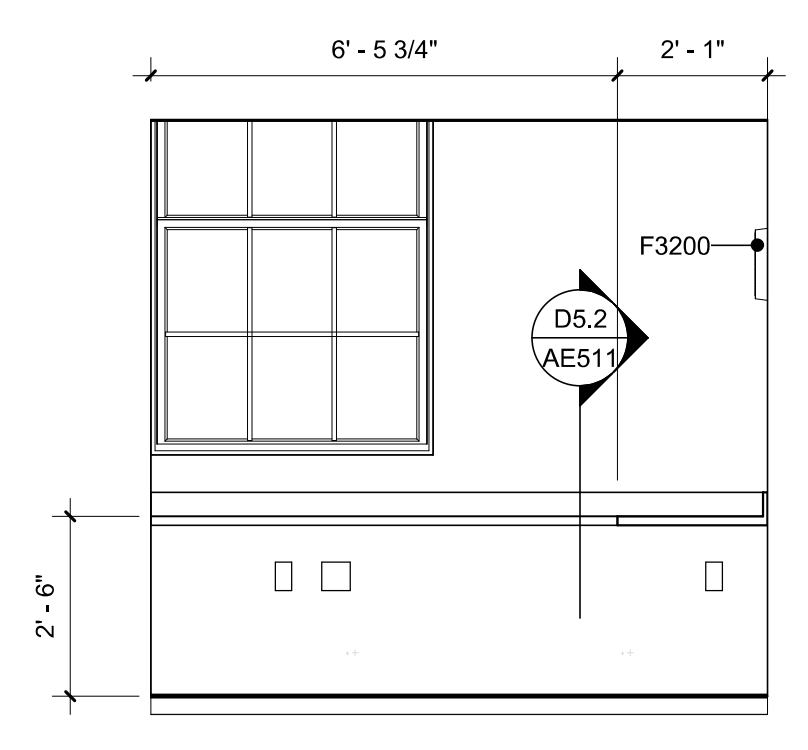
A4 TRANSFER SHOWER CONTROL WALL TYP
3/8" = 1'-0"



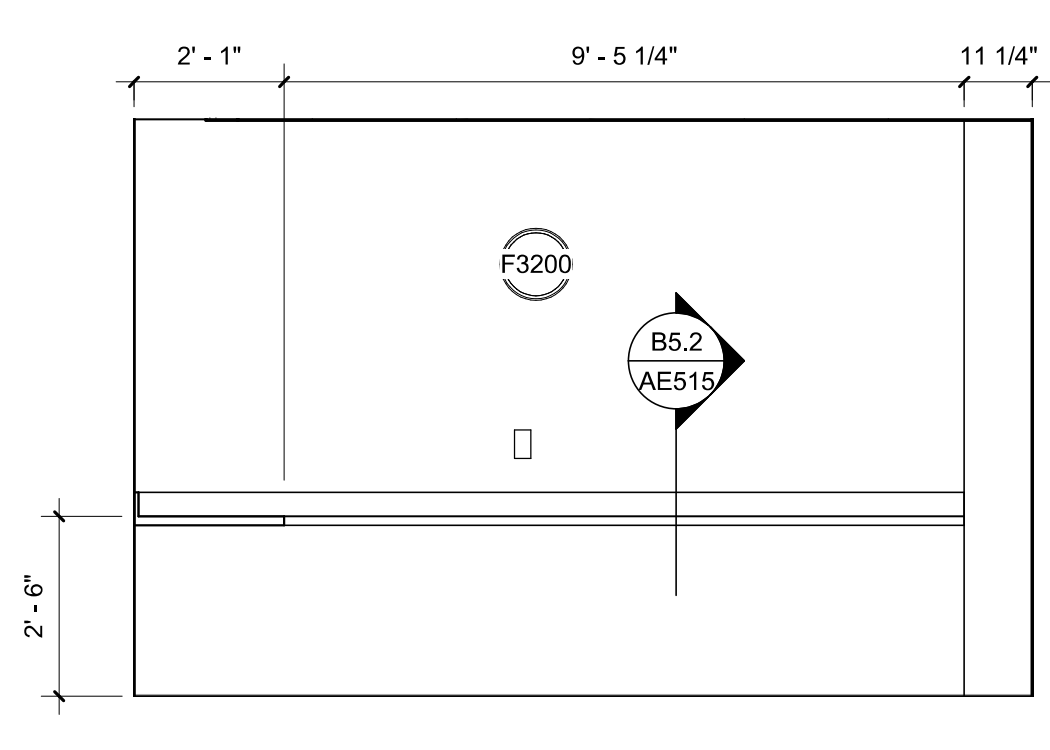
A5 ENLARGED TOILET PLAN - TYPICAL
1/4" = 1'-0"



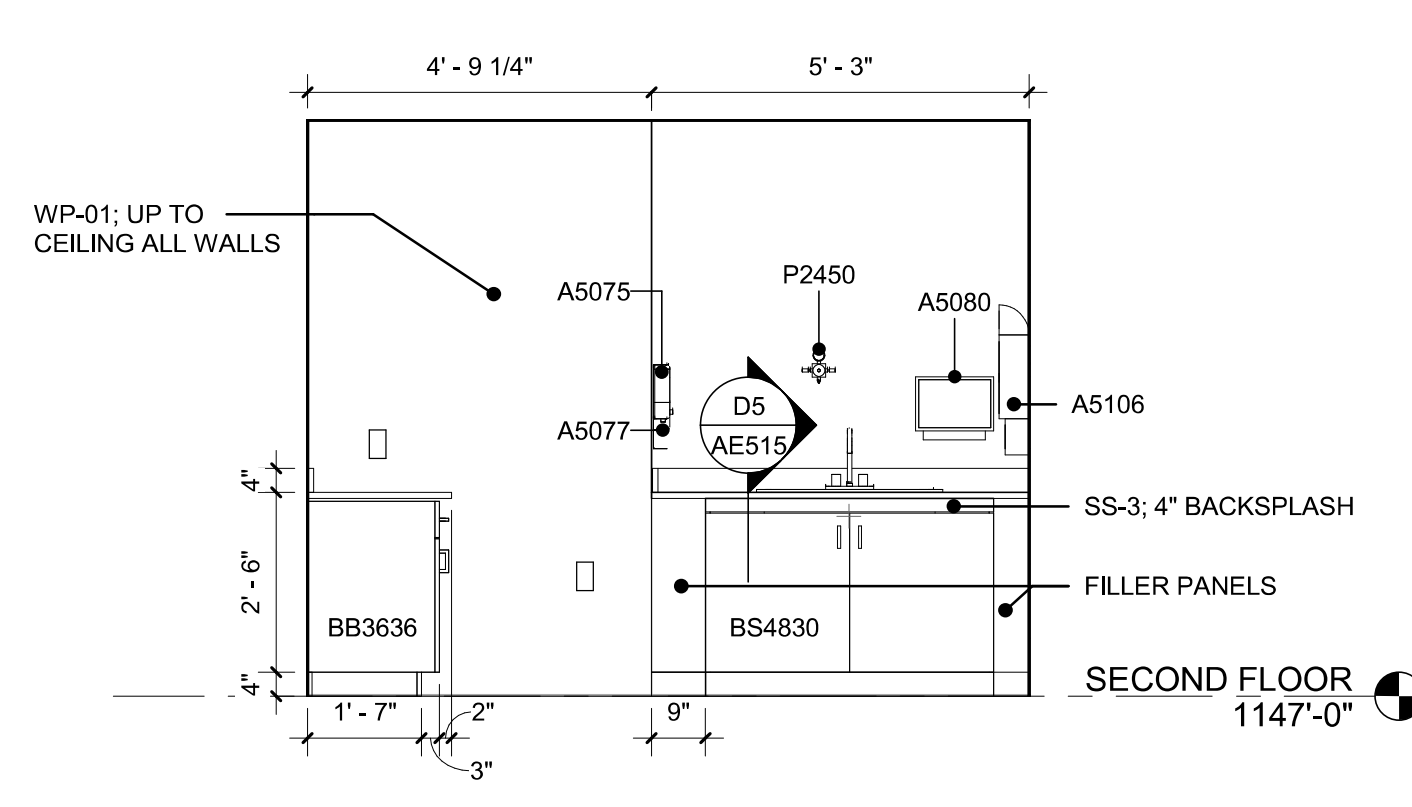
C1 TELEMETRY INT ELEV E
3/8" = 1'-0"



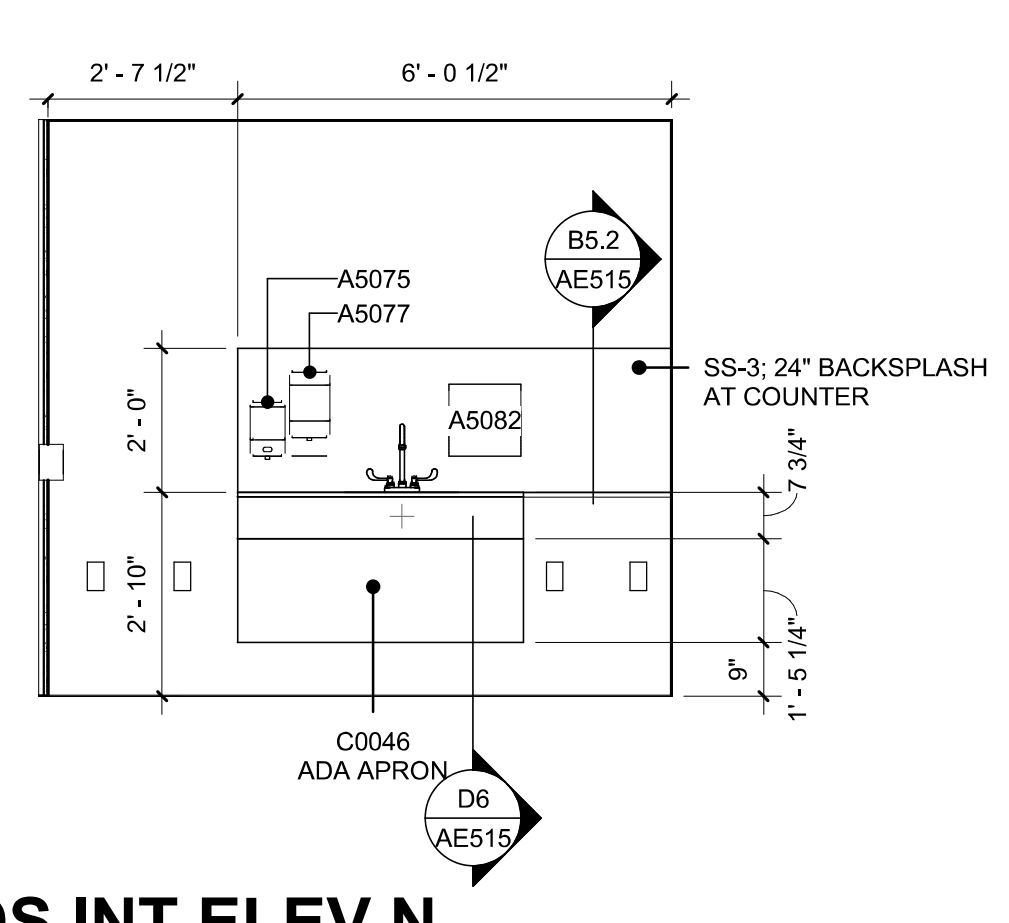
C2 TELEMETRY INT ELEV S
3/8" = 1'-0"



C4 SOILED INT ELEV N
3/8" = 1'-0"



C5 MEDS INT ELEV N
3/8" = 1'-0"



GENERAL SHEET NOTES

- A. FOR RAISED FLOOR INFORMATION AT PATIENT BATHROOMS, AND PATIENT RAIL INTERSECTION WITH DOOR FRAME AT PATIENT BATHROOM SEE SHEET AE500.
- B. FOR CASEWORK / MILLWORK INFORMATION SEE SHEET AE515.
- C. TYPICAL PATIENT BEDROOM & BATHROOM INTERIOR ELEVATIONS ONLY APPLY TO ROOMS IN SCOPE AS SHOWN ON RELEVANT FLOOR PLANS.
- D. FOR TYPICAL EQUIPMENT MOUNTING HEIGHTS, SEE SHEET G1002.
- E. FOR FINISH SCHEDULE SEE AFR02.
- F. COORDINATE ALL FINAL EQUIPMENT HEIGHTS AND LOCATIONS WITH CLIENT / END USERS.
- G. FOR TYPICAL SHOWER CONTROL WALL @ TRANSFER TYPE SEE A4 / AE406.
- H. SEE EQUIPMENT SHEET QH601 FOR EQUIPMENT SCHEDULE.

SHEET KEYNOTES

- 22.05 PROVIDE AN ADJUSTABLE-HEIGHT HAND-HELD SHOWER SPRAY ON VERTICAL BAR W/ 59" MINIMUM HOSE LENGTH. CAPABILITY TO LOWER TO 48" AFF (AS NEEDED). SEE PLUMBING DRAWING PL001 FOR INFORMATION.

Revisions:		
No.	Description	Date

CONSULTANTS:

BRITT, PETERS AND ASSOCIATES
8701 RED OAK BLVD, SUITE 500
CHARLOTTE, NC 28217
PHONE: 704.522.0405
WWW.BRITTPETERS.COM

Seal:

Digital Signature not valid without
Certification below seal.

JONATHAN M. CLARK
11080
REGISTERED PROFESSIONAL ENGINEER
CHARLOTTE, NC

ARCHITECT / ENGINEERS:

HARRELL DESIGN GROUP, P.C.
8016 TOWER POINT DRIVE
CHARLOTTE, NC 28227
P 704.814.1320
F 704.321.0833
HDG PROJECT: 18002
COPYRIGHT © 2023

Drawing Title:
INTERIOR ELEVATIONS

Project Phase:
BID DOCUMENTS

FULLY SPRINKLERED

Project Title:
RENOVATE MED SURGE WARDS

Location:
VETERANS HEALTHCARE SYSTEM
OF THE OZARKS

Date:
MARCH 24, 2024

Checked:
JC/LK

Drawn:
MS

Project Number:
564-17-140

Building Number:
1

Drawing Number:
AE406

Sheet **56** of **162**

Engineering Service

VETERANS HEALTH CARE SYSTEM OF THE OZARKS

VA U.S. Department of Veterans Affairs