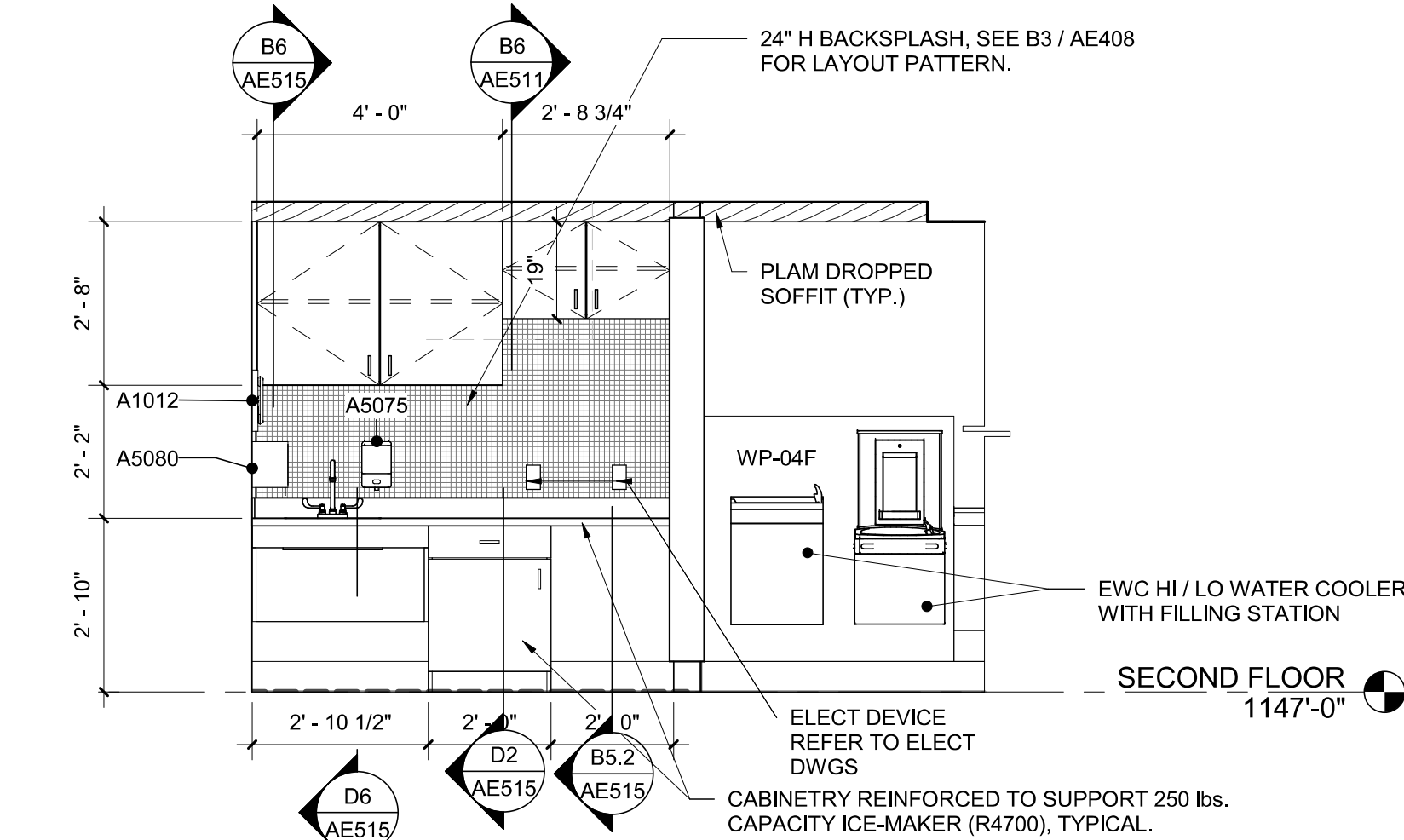
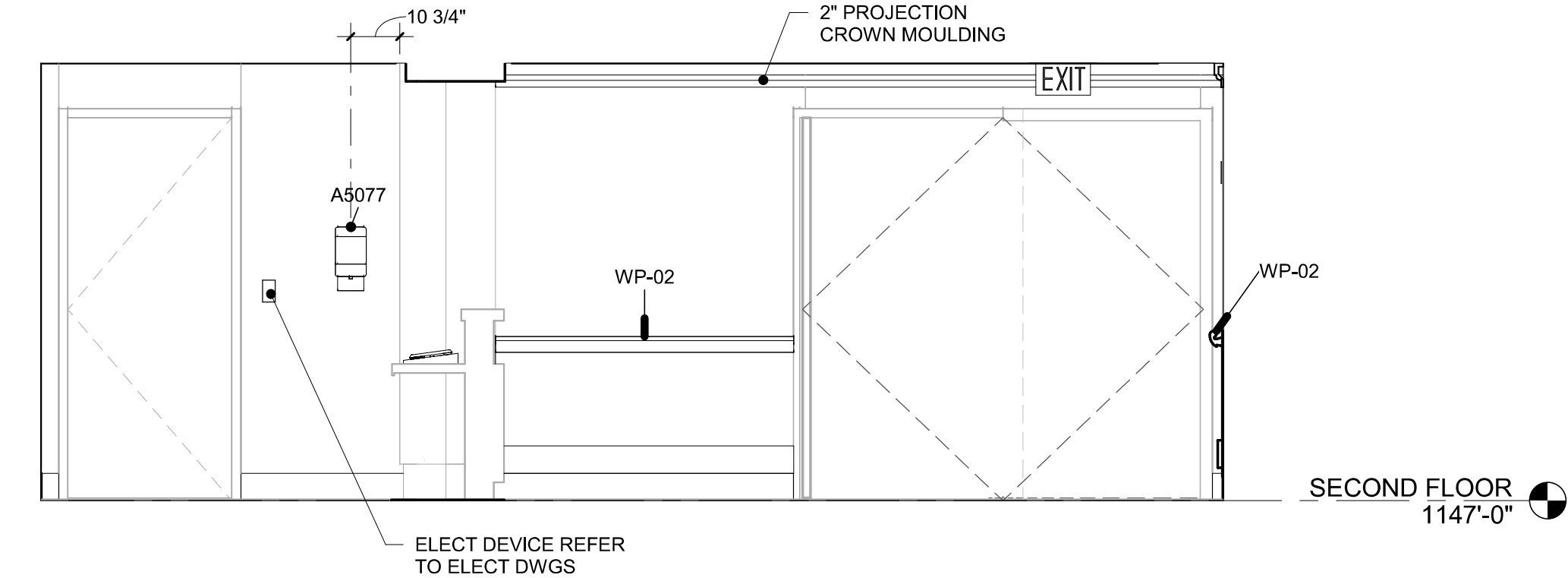


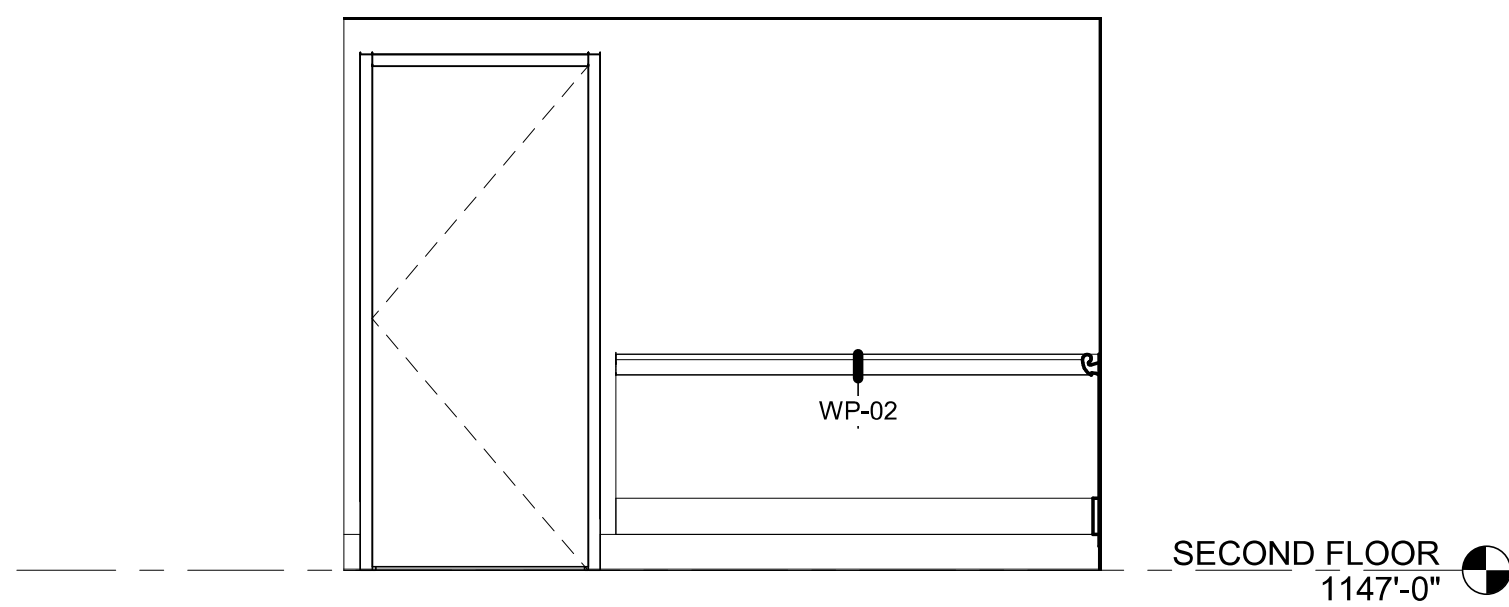
three inches = one foot
one and one half inches = one foot
one inch = one foot
three quarters inch = one foot
one half inch = one foot
one quarter inch = one foot
one eighth inch = one foot
one sixteenth inch = one foot



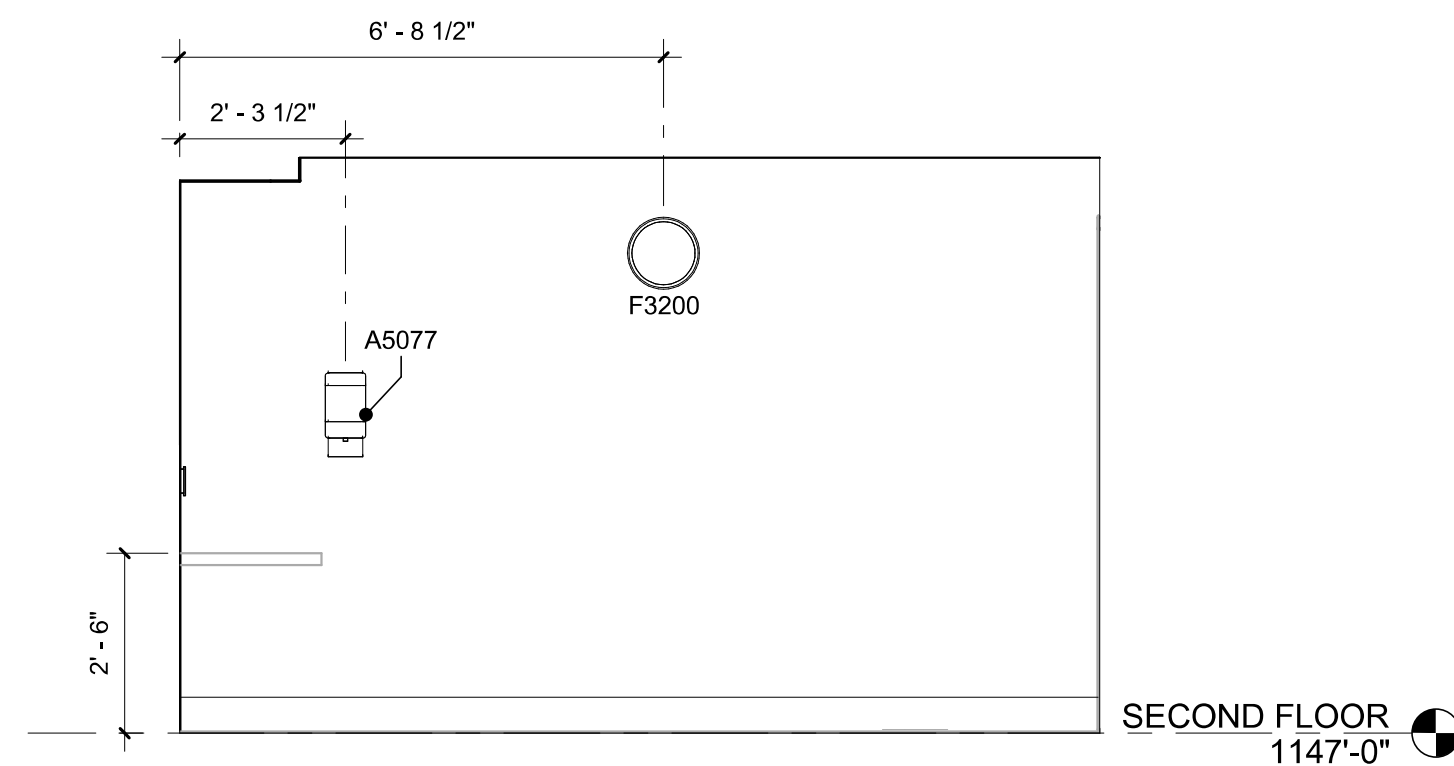
C1 NOURISHMENT INT ELEV S
3/8" = 1'-0"



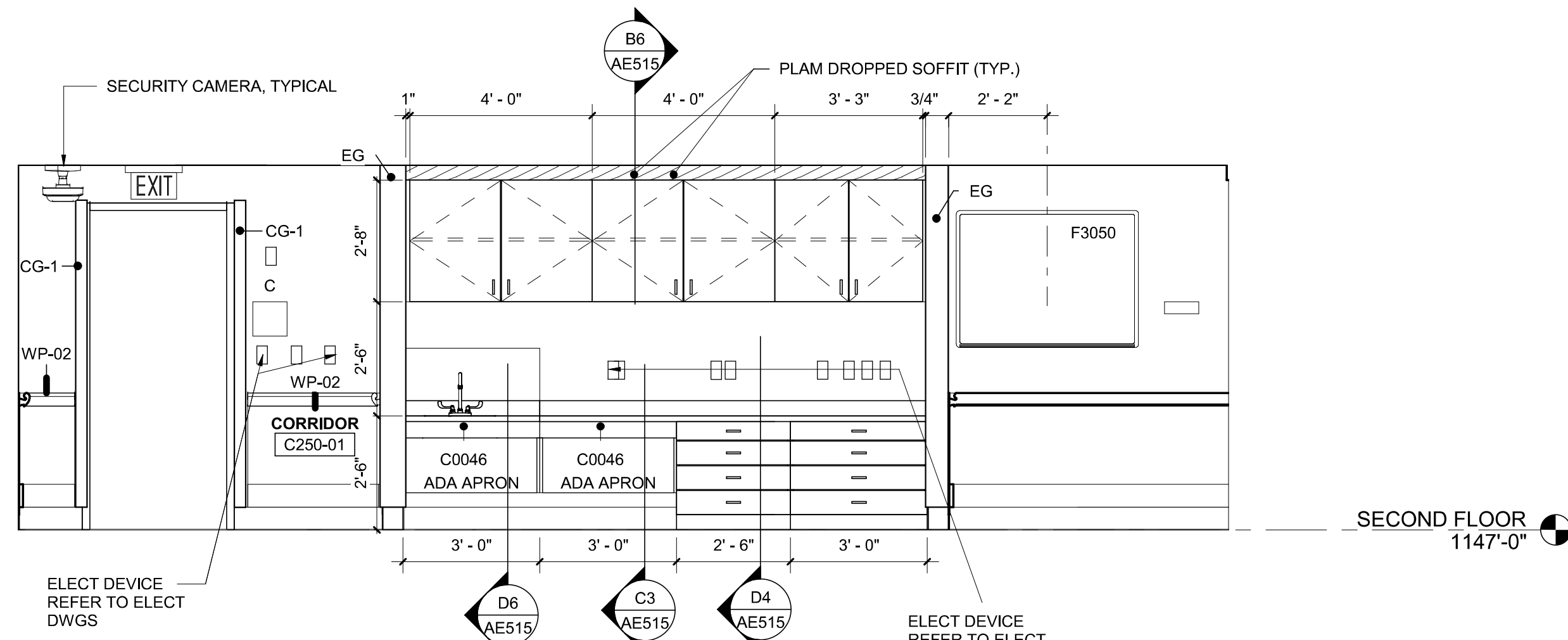
D1 CONCIERGE INT ELEV E
3/8" = 1'-0"



C3 NURSE STA. INT ELEV W
3/8" = 1'-0"

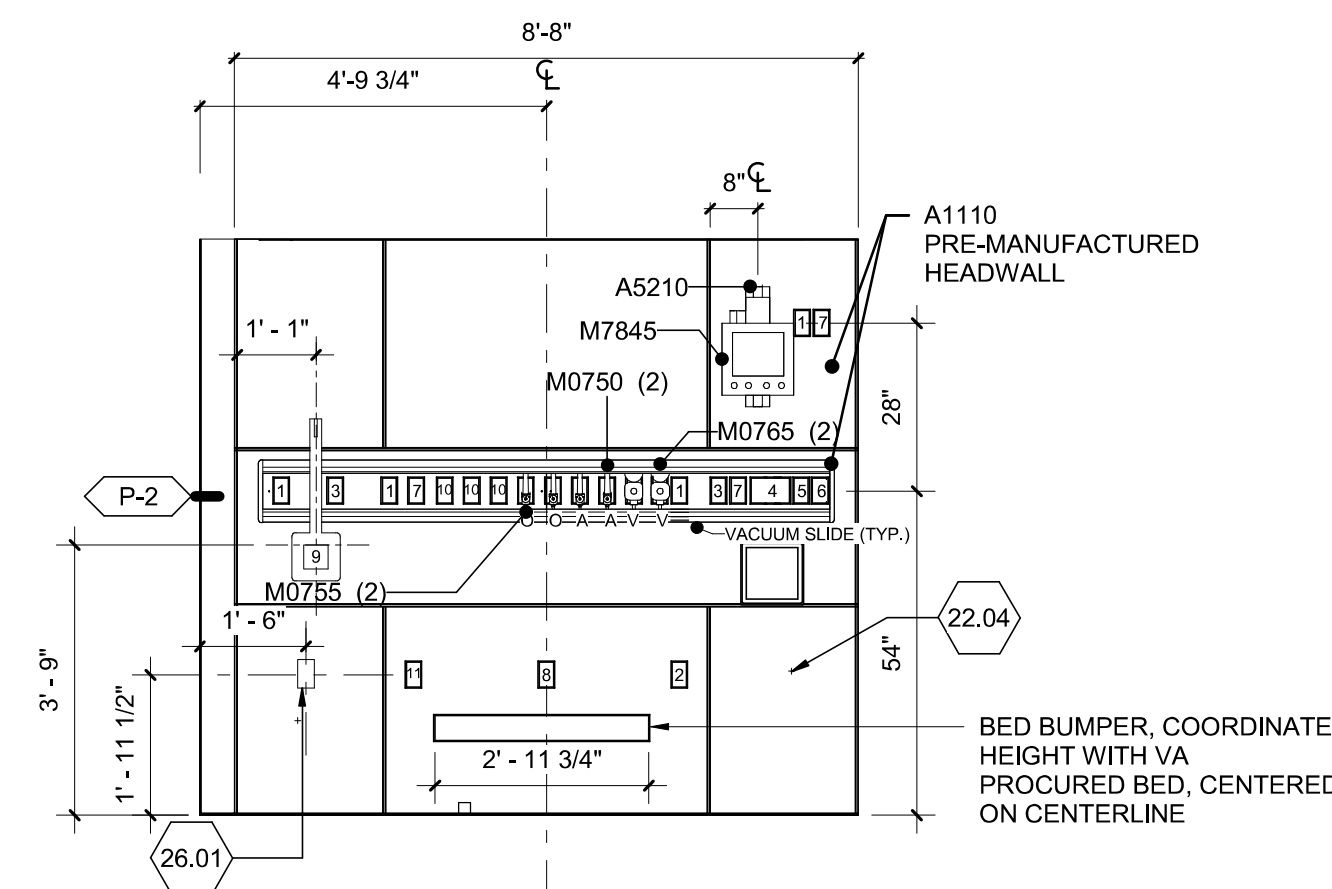


D3 CONCIERGE INT ELEV N
3/8" = 1'-0"



C6 NURSE STA INT ELEV N
3/8" = 1'-0"

SYMBOLS LEGEND	
SPECIFICATION 10 25 13	
A1	STYLE PATIENT BED SERVICE WALL (PBSW)
O	COORDINATE WITH ELECTRICAL DETAIL D5 / EP501
A	OXYGEN
V	AIR
1	VACUUM
2	EMERGENCY POWER OUTLETS
3	EMERGENCY POWER OUTLETS
4	NORMAL POWER OUTLETS
5	NURSE CALL AUDIO VISUAL
6	SWITCHES FOR OVERHEAD EXAM LIGHT AND NURSE LIGHT
7	AUXILIARY LIGHT WITH HOOD AND SWITCH
8	DATA OUTLET
9	BED PIN OUTLET
10	POWER, DATA, AND CATV FOR PDI ARM (COORDINATE WITH PDI MANUFACTURER)
11	BLANK PLATE
12	NORMAL POWER OUTLETS



D6 TYPICAL HEADWALL DETAIL
3/8" = 1'-0"

GENERAL SHEET NOTES

- FOR RAISED FLOOR INFORMATION AT PATIENT BATHROOMS, AND PATIENT RAIL INTERSECTION WITH DOOR FRAME AT PATIENT BATHROOM SEE SHEET AE500.
- FOR CASEWORK / MILLWORK INFORMATION SEE SHEET AE515.
- TYPICAL PATIENT BEDROOM & BATHROOM INTERIOR ELEVATIONS ONLY APPLY TO ROOMS IN SCOPE AS SHOWN ON RELEVANT FLOOR PLANS.
- FOR TYPICAL EQUIPMENT MOUNTING HEIGHTS, SEE SHEET S1002.
- FOR FINISH SCHEDULE SEE AF602.
- COORDINATE ALL FINAL EQUIPMENT HEIGHTS AND LOCATIONS WITH CLIENT / END USERS.
- FOR TYPICAL SHOWER CONTROL WALL @ TRANSFER TYPE SEE A4 / AE408.
- SEE EQUIPMENT SHEET QH601 FOR EQUIPMENT SCHEDULE.

SHEET KEYNOTES

- 22.04 NEW DIALYSIS BOX. SEE PLUMBING DRAWING PL105 FOR INFORMATION.
- 26.01 ELECTRICAL DEVICES, SEE ELECTRICAL DRAWINGS FOR INFORMATION.

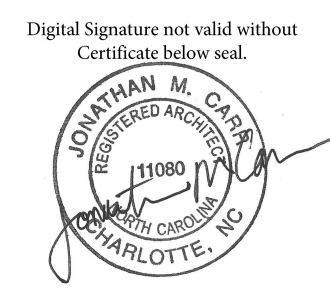
Revisions:		
No.	Description	Date

CONSULTANTS:

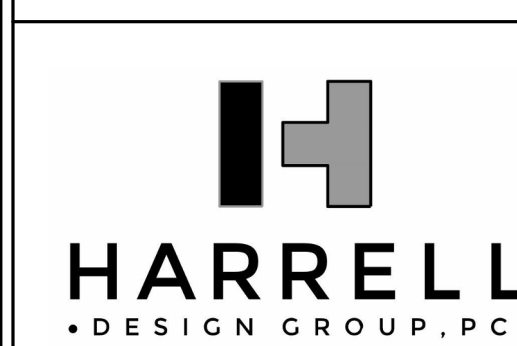


8701 RED OAK BLVD, SUITE 500
CHARLOTTE, NC 28217
PHONE: 704.522.0405
WWW.BRITTPETERS.COM

Seal:



ARCHITECT / ENGINEERS:



8016 TOWER POINT DRIVE
CHARLOTTE, NC 28227
P 704.814.1320
F 704.321.0833
HDG PROJECT: 18002
COPYRIGHT © 2023

Drawing Title:

INTERIOR ELEVATIONS

Project Phase:

BID DOCUMENTS

FULLY SPRINKLERED

Project Title:

RENOVATE MED SURGE
WARDS

Location:

VETERANS HEALTHCARE SYSTEM
OF THE OZARKS

Date:

MARCH 24, 2024

Checked:

TR

Drawn:

MS

Project Number:

564-17-140

Building Number:

1

Drawing Number:

AE405

Sheet

55 of 162

Engineering Service



VA U.S. Department of Veterans Affairs