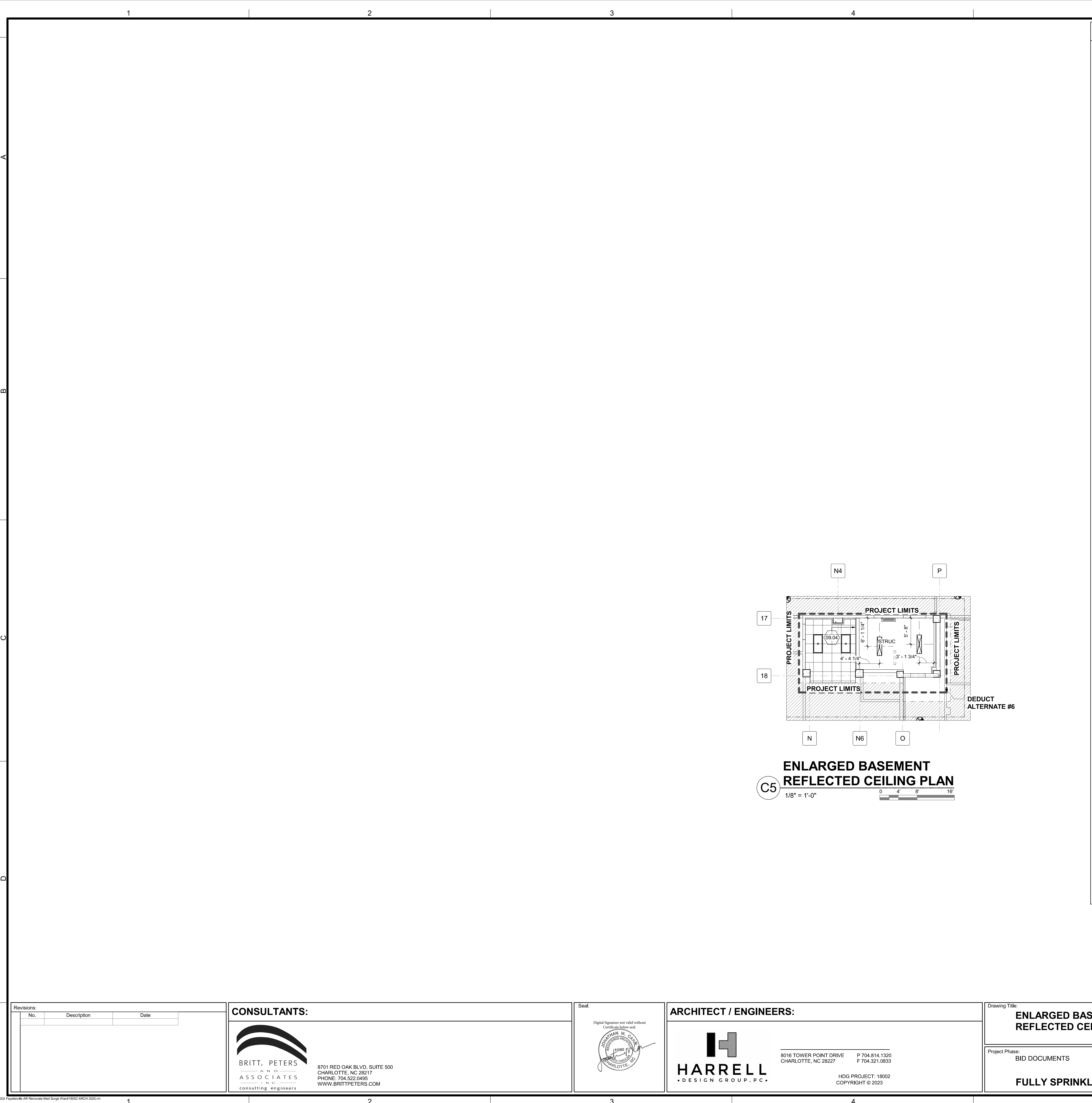


0 8" three inches = one foot
0 4" one and one half inches = one foot
0 2" one inch = one foot
0 1" one half inch = one foot
0 3/4" three quarters inch = one foot
0 1/2" one half inch = one foot
0 1/4" one quarter inch = one foot
0 1/8" one eighth inch = one foot
0 1/16" one sixteenth inch = one foot



REFLECTED CEILING LEGEND	
	2' x 4' TROFFER LIGHT LIFE SAFETY
	2' x 4' TROFFER LIGHT CRITICAL
	2' x 4' TROFFER LIGHT
	OCCUPANCY SENSOR
	NURSE CALL DOME LIGHT, AND WALL MOUNTED NURSE CALL DOME LIGHT
	SPEAKER - COMMUNICATIONS
	CEILING MOUNTED - WIRELESS ACCESS POINT
	CAMERA CEILING MOUNTED PATIENT OBSERVATION - FIXED DOME NETWORK / PAN TILT ZOOM
	RECESSED DOWNLIGHT - LIFE SAFETY / CRITICAL / NORMAL
	PENDANT LIGHT DISK
	SUPPLY DIFFUSER
	EXHAUST GRILLE
	DIRECTION OF PLAM GRAIN
	RETURN GRILLE
	CURTAIN & ROD
	CHASE SYMBOL
	CEILING EXIT SIGN - VARIOUS DIRECTIONAL AND NON-DIRECTIONAL CONFIGURATIONS
	RADIANT PANEL
	CU CEILING MOUNTED CASSETTE UNIT
	ACCESS PANEL - 18" x 18" UON
	PLAM SOFFIT
	GYP BD. SOFFIT
	LINEAR CEILING DIFFUSER
	CEILING MOUNTED COMBINATION FIRE ALARM SPEAKER/STROBE DEVICE
	CEILING MOUNTED FIRE ALARM SPEAKER DEVICE
	FIRE ALARM SMOKE DETECTOR
	FIRE ALARM HEAT DETECTOR
	FIRE ALARM SYSTEM CEILING MONTED SMOKE DETECTOR FOR ELEVATOR RECALL
	FIRE ALARM CONNECTION RELAY
	CEILING MOUNTED CAMERA
	STRUC EXPOSED TO STRUCTURE
	PATIENT CEILING LIFT W/ TURNTABLE

GENERAL SHEET NOTES	
A.	FOR REFLECTED CEILING PLAN NOTES SEE SHEET A1001.
B.	FOR TYPICAL PATIENT BEDROOM / TOILET LAYOUTS AND REFLECTED CEILINGS, SEE AE404 WITH EXCEPTIONS INCLUDING BUT NOT LIMITED TO LOCATION OF PATIENT BED VARIES AND ROOM SPECIFIC CONDITION CITED ON PLAN TAKE PRECEDENCE.
C.	REFER TO SHEET AF601 FOR MATERIALS INFORMATION.
D.	CEILING HEIGHTS TYPICAL U.N.O. 8'-0" AFF. AND DROPPED CEILING TYPICAL U.N.O. 7'-8" AFF. SEE DETAILS A1, B1, AND/OR C1 ON SHEET AE312 FOR INFORMATION.
E.	SEE COVER SHEET G1001 FOR INFORMATION ON DEDUCT ALTERNATES.
F.	ROOMS TAGGED 'STRUCT' ARE EXPOSED STRUCTURE ROOMS WITH NO CEILING. FOG PAINT EXPOSED STRUCTURE P-4. SEE FINISH MATERIALS LEGEND AF602 FOR INFORMATION.
G.	REFER TO AE312 FOR PLASTIC LAMINATED WOOD SOFFIT INFORMATION.
H.	FOR TYPICAL ACT TO GWB CEILING CONDITION @ WINDOWS OF EXTERIOR WALL, SEE DETAIL G2 / AE602.
I.	REFER TO GC122-GC123b FOR PHASING INSTRUCTIONS.
SHEET KEYNOTES	
09.04 TRIM TEES AND ADD NEW WALL RUNNER.	
SYMBOLS LEGEND	
	DEMARCATES AREAS OF WORK TO SEQUENCE
	PROJECT LIMITS
	NOT IN SCOPE AREA OUTSIDE OF PROJECT LIMITS
	INDICATES EGRESS WALKWAY AT EXTERIOR STAIR
PARTITION GRAPHICS	
PARTITION PHASING	
	EXISTING ELEMENT TO REMAIN
	EXISTING ELEMENT TO BE DEMOLISHED
	TEMPORARY 1-HOUR RATED ELEMENT TO BE CONSTRUCTED AND DEMOLISHED IN SAME PHASE
PARTITION RATING	
	NO RATING
	SMOKE RESISTIVE PARTITION - NON RATED
	1 HOUR FIRE BARRIER
	1 HOUR FIRE/SMOKE BARRIER
	2 HOUR FIRE BARRIER
	2 HOUR FIRE/ SMOKE BARRIER
KEY PLAN	
	PLAN NORTH
	TRUE NORTH
	BASEMENT AREA OF WORK THIRD FLOOR FFE: 1505.0' SECOND FLOOR FFE: 1493.0'
	FIRST FLOOR FFE: 1479.0'

Revisions:		
No.	Description	Date

CONSULTANTS:

**BRITT, PETERS
AND
ASSOCIATES
INC.**
consulting engineers

8701 RED OAK BLVD, SUITE 500
CHARLOTTE, NC 28217
PHONE: 704.522.0405
WWW.BRITTPETERS.COM

Seal:

Digital Signature not valid without
Certificate below seal

ARCHITECT / ENGINEERS:

**HARRELL
DESIGN GROUP, P.C.**

8016 TOWER POINT DRIVE
CHARLOTTE, NC 28227
P 704.814.1320
F 704.321.0833

HG PROJECT: 18002
COPYRIGHT © 2023

Drawing Title:

**ENLARGED BASEMENT
REFLECTED CEILING PLAN**

Project Phase:

BID DOCUMENTS

FULLY SPRINKLERED

Project Title:

**RENOVATE MED SURGE
WARDS**

Location:

VETERANS HEALTHCARE SYSTEM
OF THE OZARKS

Date:

MARCH 24, 2024

Checked:

JC/LK

Drawn:

MS

Project Number:

564-17-140

Building Number:

1

Drawing Number:

AE121

Sheet **45** of **162**

**Engineering
Service**

**VETERANS HEALTH CARE SYSTEM
OF THE OZARKS**

VA U.S. Department
of Veterans Affairs