

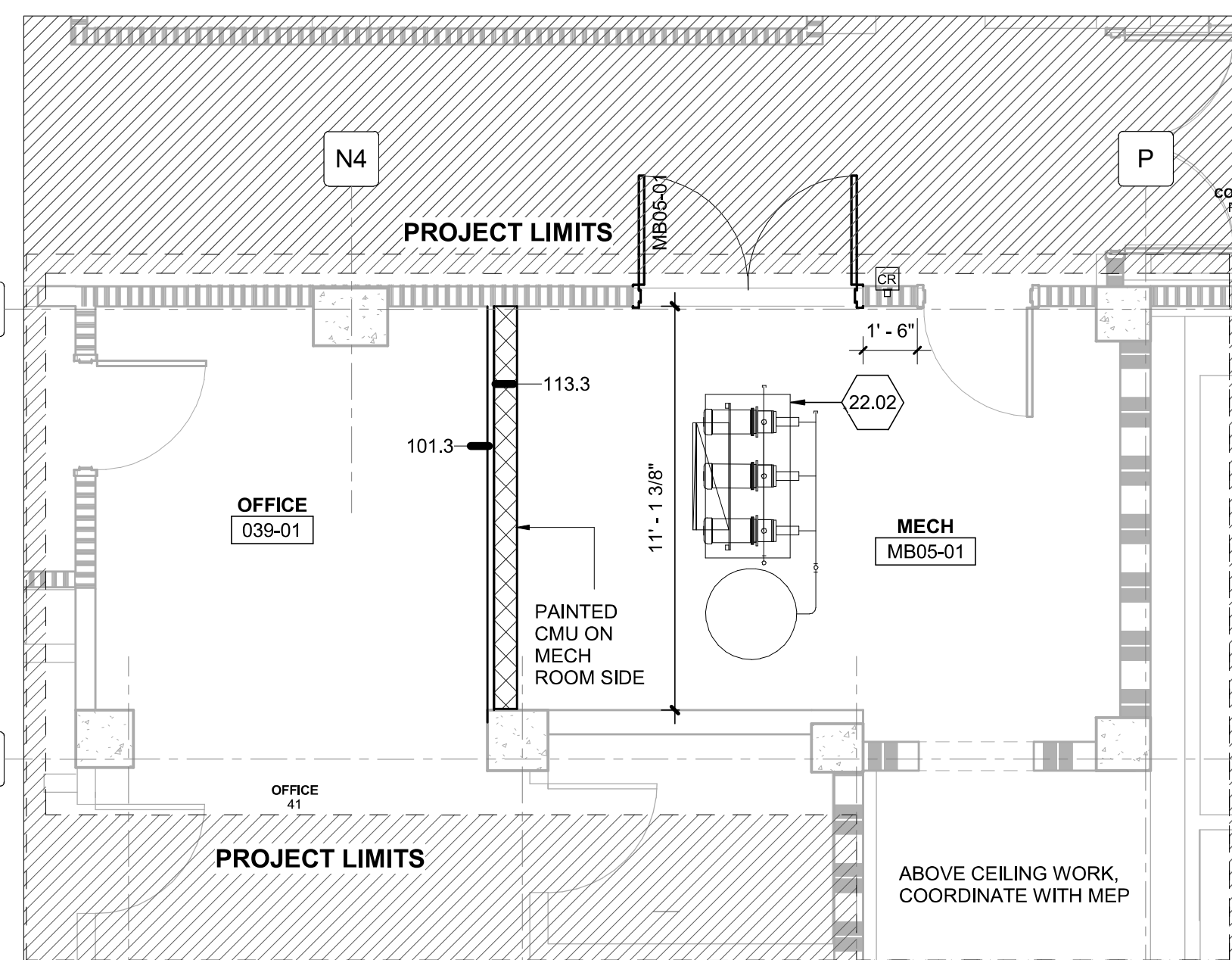
three inches = one foot  
one and one half inches = one foot  
three quarters inch = one foot  
one half inch = one foot  
three eighths inch = one foot  
one quarter inch = one foot  
one eighth inch = one foot  
one sixteenth inch = one foot

## GENERAL SHEET NOTES

- A. REFER TO SHEET A1001 FOR GENERAL FLOOR PLAN NOTES AND SYMBOLS.  
B. FOR PATIENT BED, HEADWALL, & PATIENT LIFT COORDINATION, SEE REFLECTED CEILING PLAN SHEETS, QH102 - QH104, AND PATIENT LIFT SUPPORT A3 / AE501.  
C. FOR TYPICAL PATIENT BEDROOM / TOILET ROOM LAYOUT, SEE TYPICAL PLANS ON AE404.  
D. ALL RATED PENETRATIONS TO BE SEALED WITH RED FIRE RATED CAULKING. USE ACOUSTICAL CAULKING ON ALL OTHER WALL PENETRATIONS.  
E. FOR DOOR INFORMATION SEE AE400 SERIES SHEETS & AE601.  
F. FOR PARTITION TYPES SEE G1501, AND WALL IDENTIFICATION TAGS, SEE AE400 SERIES SHEETS.  
G. FOR RAISED FLOOR LAYOUT SEE SHEETS AE106.  
H. FOR WINDOW TYPES & DETAILS, SEE AE602 FOR INFORMATION.

## SHEET KEYNOTES

22.02 NEW BOOSTER PUMP, SEE PLUMBING DRAWINGS PL100 FOR INFORMATION.



**B6 ENLARGED BASEMENT PARTIAL PLAN**  
1/4" = 1'-0"

## SYMBOLS LEGEND

- INDICATES AREA NOT IN SCOPE OF WORK  
INDICATES AREA OF ABOVE CEILING WORK

## PARTITION GRAPHICS

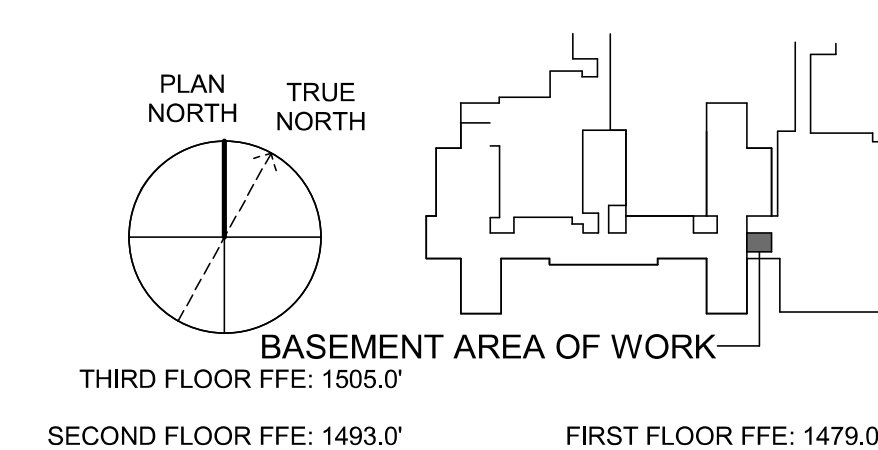
### PARTITION PHASING

- EXISTING ELEMENT TO REMAIN  
EXISTING ELEMENT TO BE DEMOLISHED  
TEMPORARY 1-HOUR RATED ELEMENT TO BE CONSTRUCTED AND DEMOLISHED IN SAME PHASE

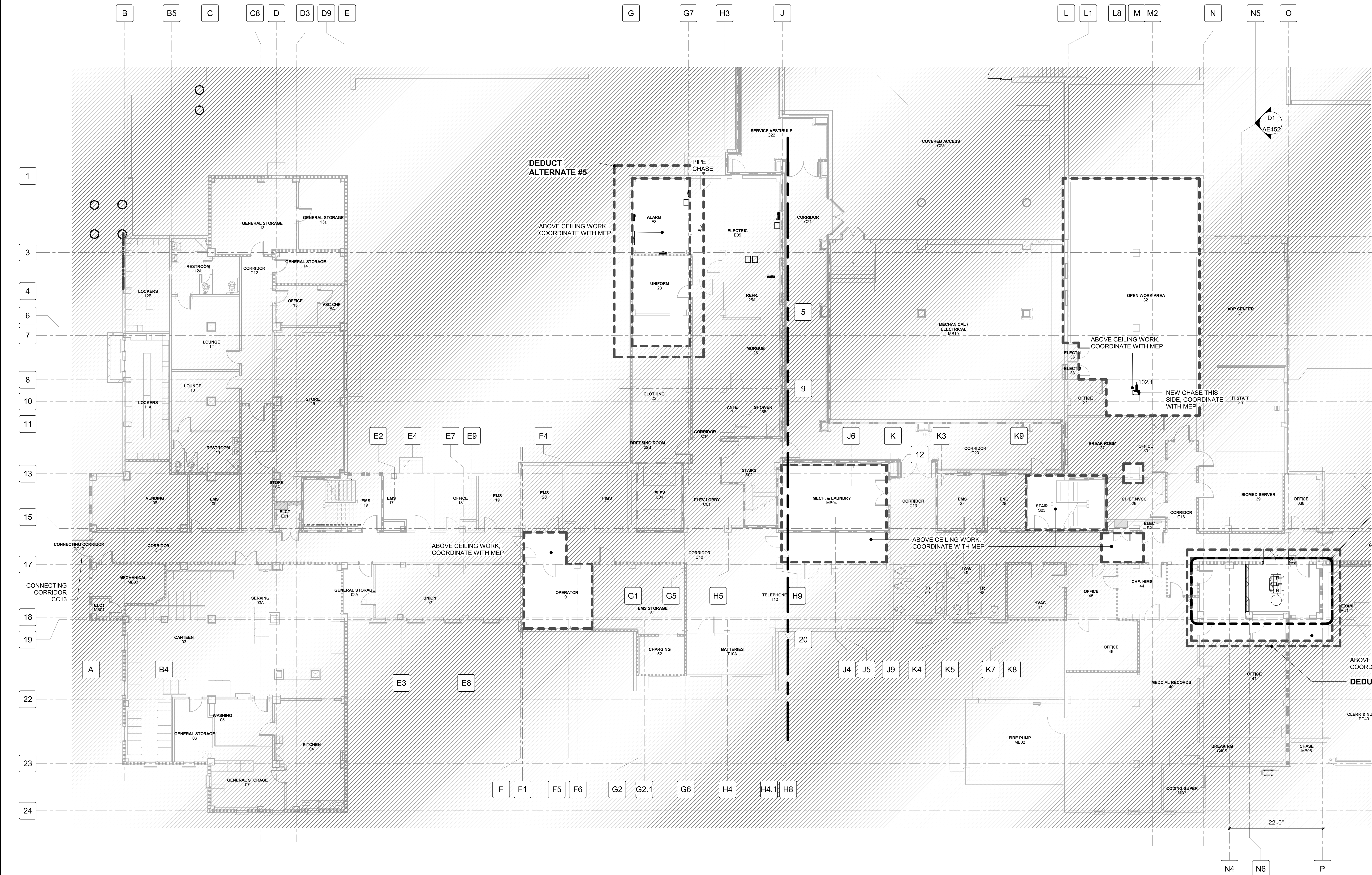
### PARTITION RATING

- NO RATING  
SMOKE RESISTIVE PARTITION - NON RATED  
1 HOUR FIRE BARRIER  
1 HOUR FIRE/SMOKE BARRIER  
2 HOUR FIRE BARRIER  
2 HOUR FIRE/ SMOKE BARRIER

## KEY PLAN



**D1 BASEMENT FLOOR PLAN - PHASES 1-3**  
3/32" = 1'-0"



Revisions:		
No.	Description	Date

### CONSULTANTS:



8701 RED OAK BLVD, SUITE 500  
CHARLOTTE, NC 28217  
PHONE: 704.522.0405  
WWW.BRITTPETERS.COM

Seal:



### ARCHITECT / ENGINEERS:



8016 TOWER POINT DRIVE  
CHARLOTTE, NC 28227  
P 704.814.1320  
F 704.321.0833  
HDG PROJECT: 18002  
COPYRIGHT © 2023

Drawing Title:

**BASEMENT FLOOR PLAN -  
PHASES 1-3**

Project Phase:

BID DOCUMENTS

**FULLY SPRINKLERED**

Project Title:

**RENOVATE MED SURGE  
WARDS**

Location:

VETERANS HEALTHCARE SYSTEM  
OF THE OZARKS

Date:

MARCH 24, 2024

Checked:

JC/LK

Drawn:

MS

Project Number:

564-17-140

Building Number:

1

Drawing Number:

**AE050**

Sheet 37 of 162

**Engineering  
Service**



**VA** U.S. Department  
of Veterans Affairs