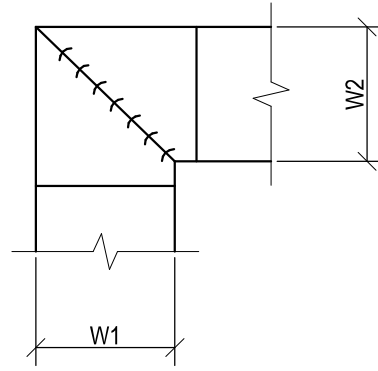
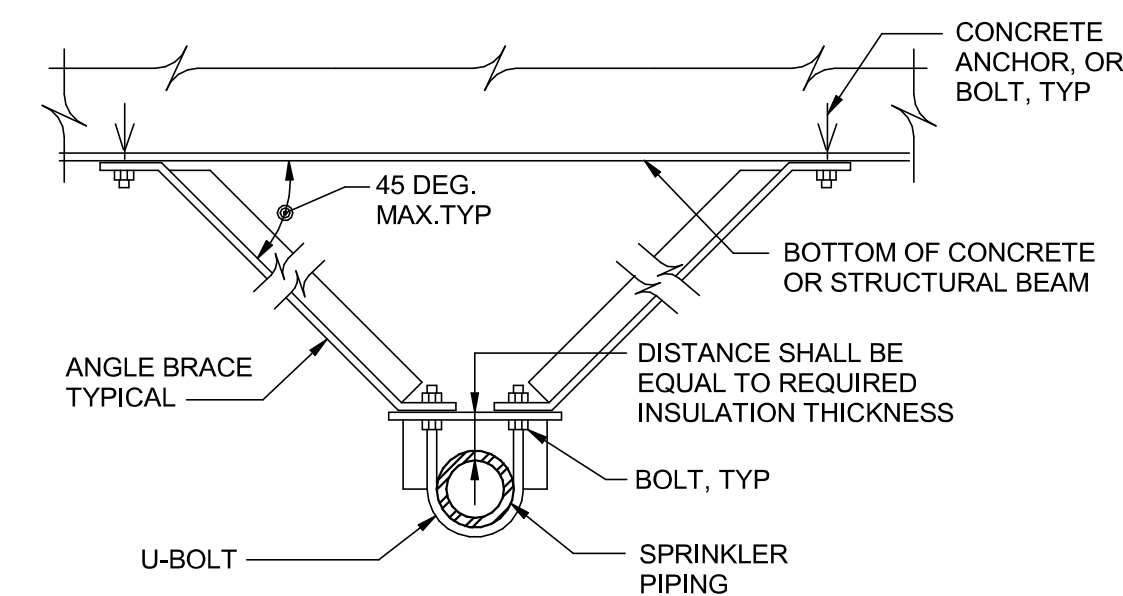


B3 DIFFUSER DUCTING
NOT TO SCALE

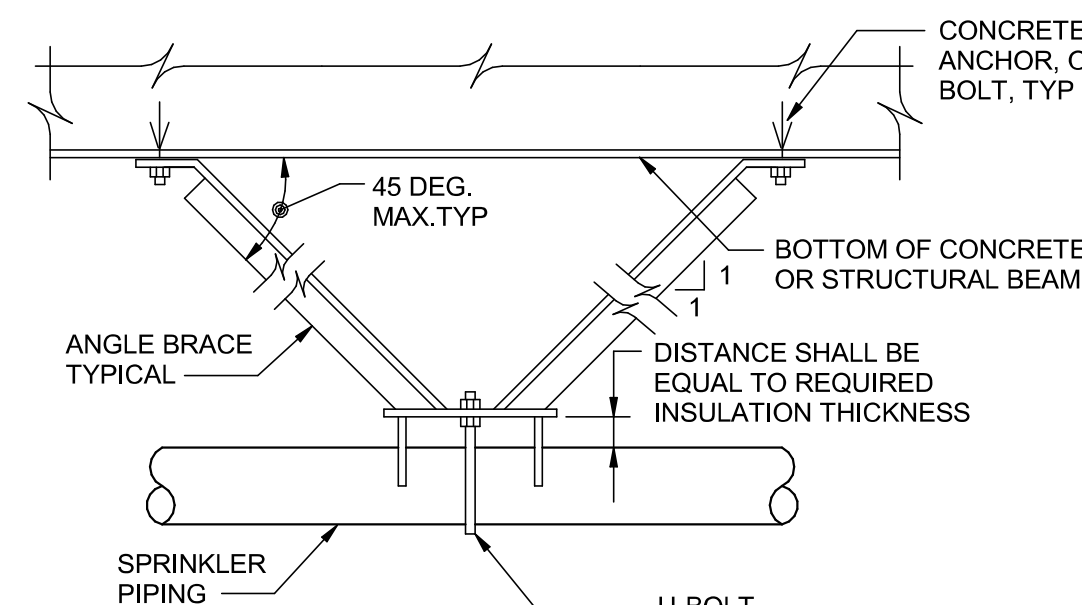


- NOTES:
1. ALL VANE ELBOWS SHALL BE CONSTRUCTED AND INSTALLED AS DETAILED BY SMACNA.
 2. WHEN W1 DOES NOT EQUAL W2, VANE SHALL BE SINGLE THICKNESS VANE TYPE REGARDLESS OF W DIMENSION.
 3. ALL SINGLE THICKNESS VANES SHALL HAVE A 2" (50mm) RADIUS, 1/2" (12mm) MAXIMUM SPACE BETWEEN VANES AND A 3/4" (19mm) TRAILING EDGE.
 4. WHEN W EQUALS W2 AND W1 IS GREATER THAN 20" (500mm) VANES SHALL BE DOUBLE VANE TYPE.

C4 DUCTWORK SQUARE VANE ELBOWS
NOT TO SCALE



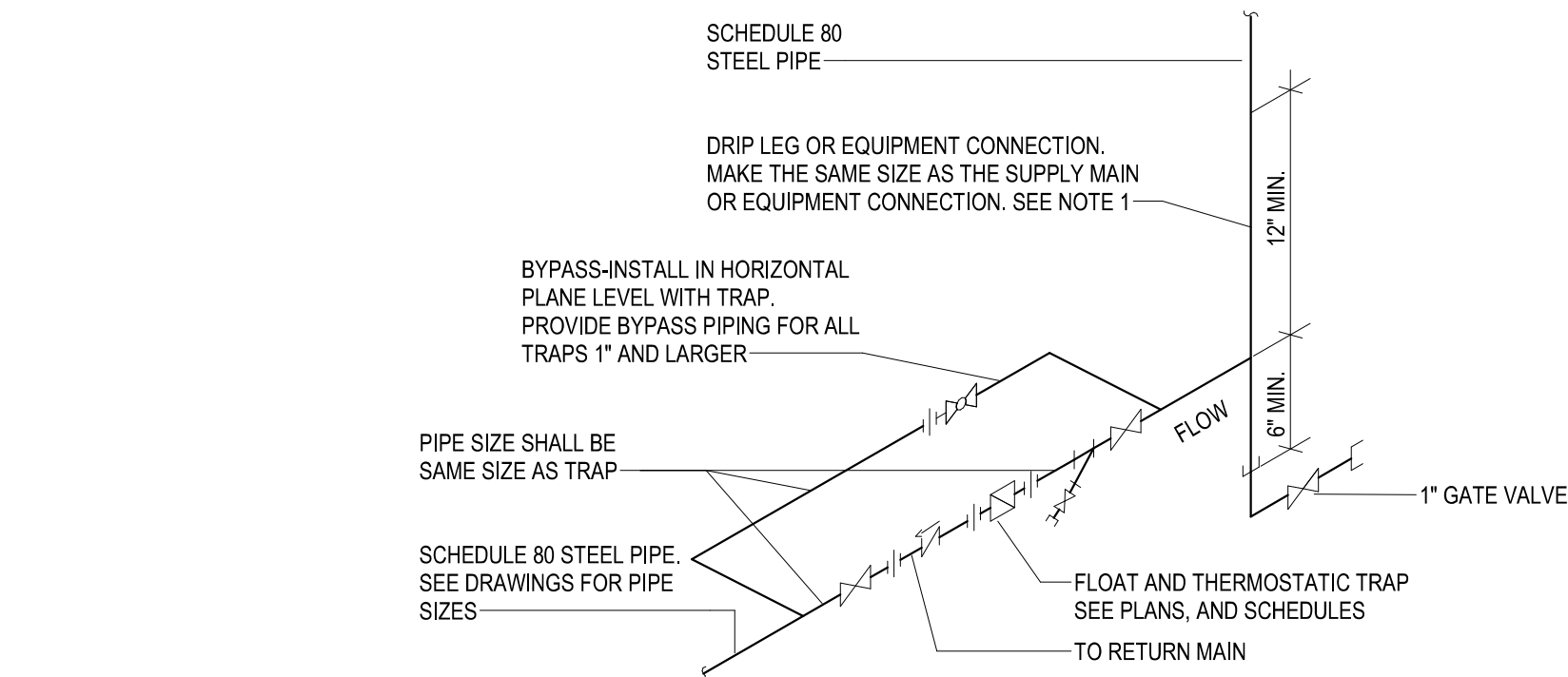
TRANSVERSE BRACE DETAIL



LONGITUDINAL BRACE DETAIL

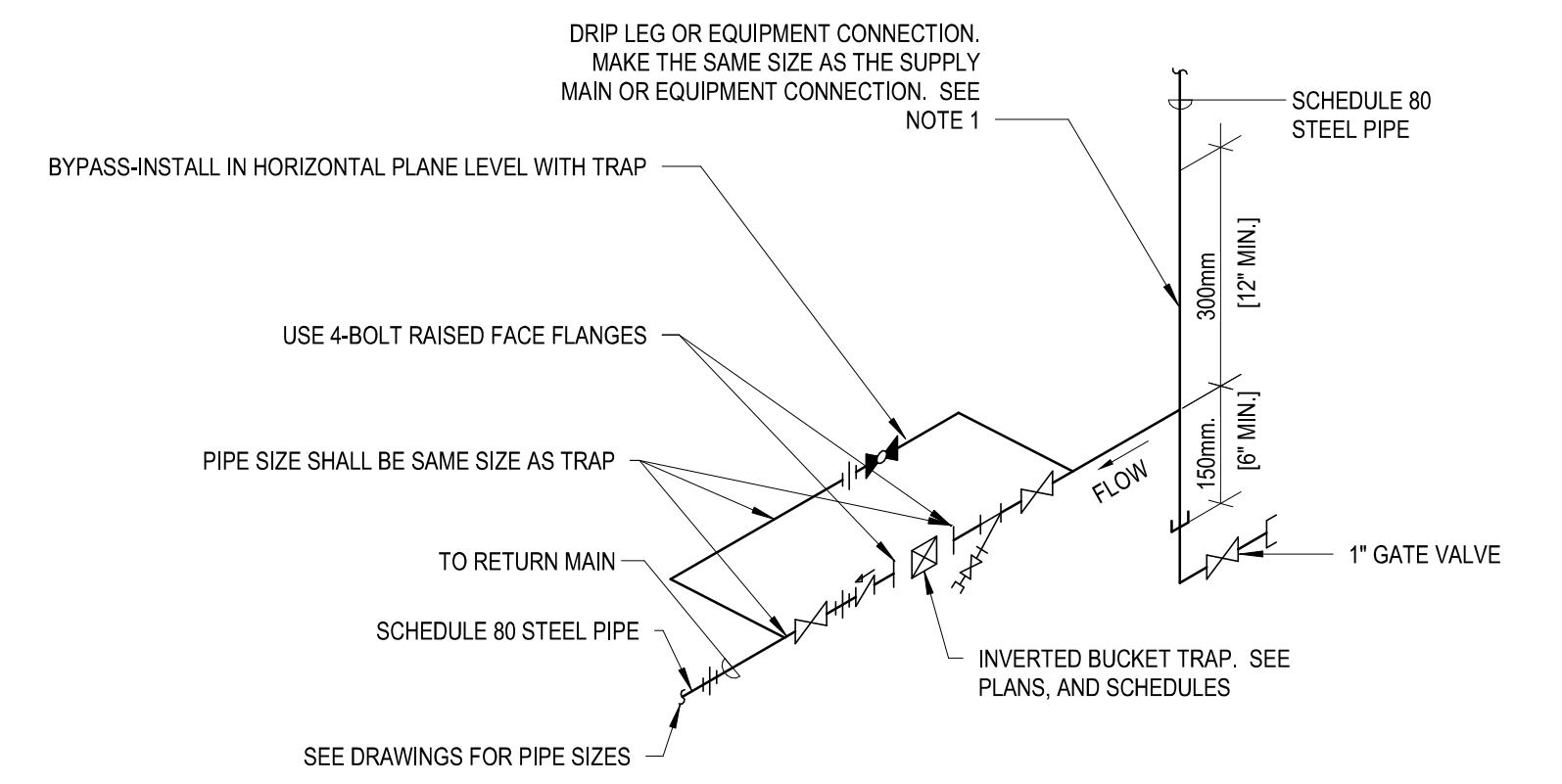
- NOTES:
- A. DETAILS SHOWN ARE FOR PIPE BRACING, OTHER EQUIPMENT BRACING SHALL BE SIMILAR.
 - B. PL SIZES SHALL BE COORDINATED WITH PIPING, AND EQUIPMENT ACTUAL SIZES.
 - C. BRACE SIZES, SPACINGS, LOCATIONS, AND ATTACHMENTS SHALL BE AS SPECIFIED. BRACES SHALL BE FULLY COORDINATED WITH STRUCTURAL FRAMING AND WITH ALL OTHER BUILDING MATERIALS AND SERVICES.
 - D. TRANSVERSE AND LONGITUDINAL BRACES MAY BE COMBINED WHERE REQUIRED TO RESIST MOTIONS IN BOTH DIRECTIONS AT THE SAME TIME.
 - E. PIPING CLAMPS MAY BE UTILIZED IN LIEU OF WELDING AT BLACK STEEL OR OTHER PIPING MATERIALS.

F3 SEISMIC BRACING DETAIL
NOT TO SCALE



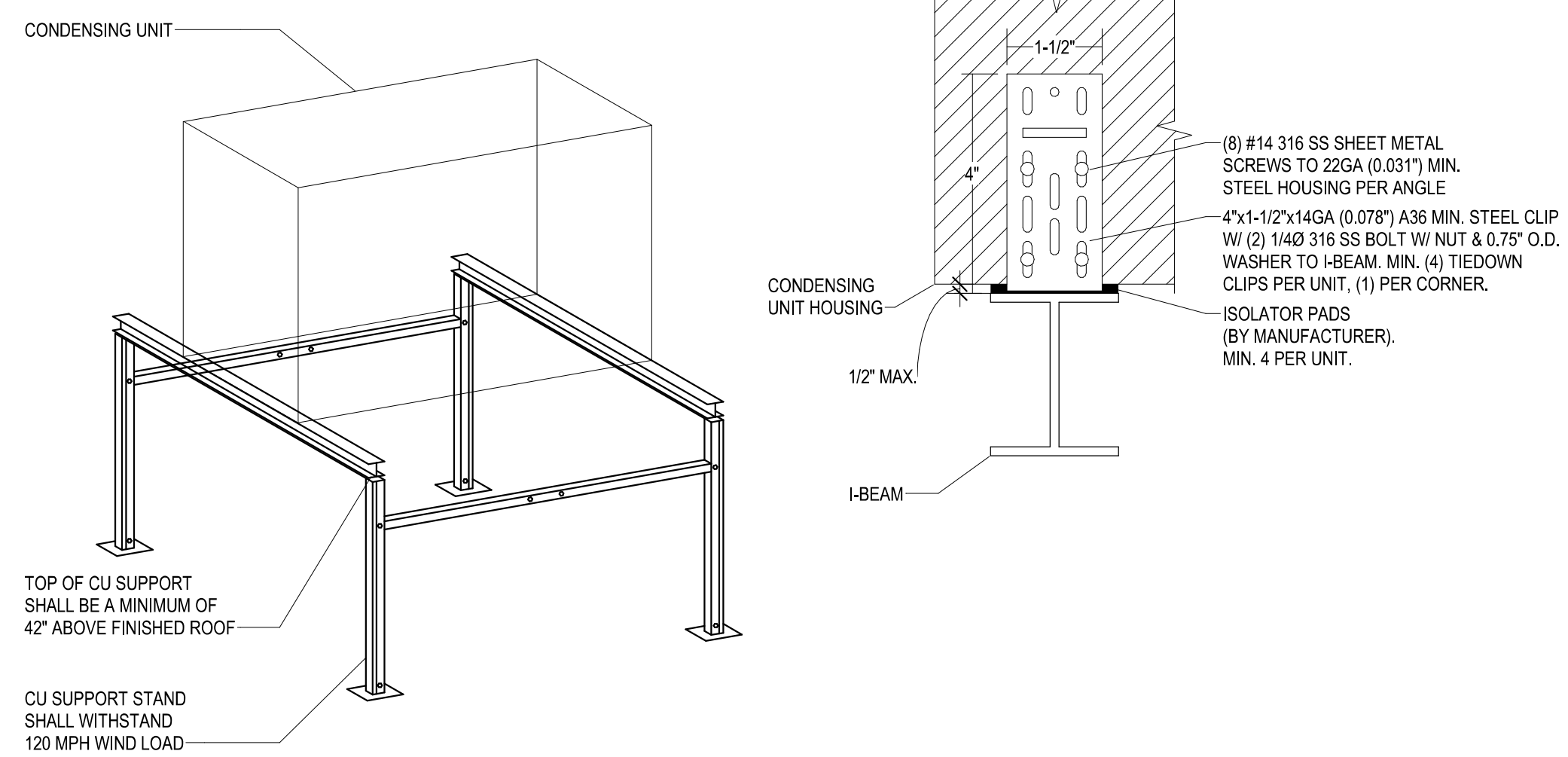
- NOTE:
1. DRIP POINTS ON STEAM MAINS SHALL BE PROVIDED WITH A 1/2" MINIMUM HIGH DRIP LEG FROM BOTTOM OF STEAM MAIN TO TRAP INLET. DRIP LEG SHALL HAVE 8' SCALE POCKET BELOW TRAP INLET.

B6 FLOAT AND THERMOSTATIC STEAM TRAP ASSEMBLY
NOT TO SCALE

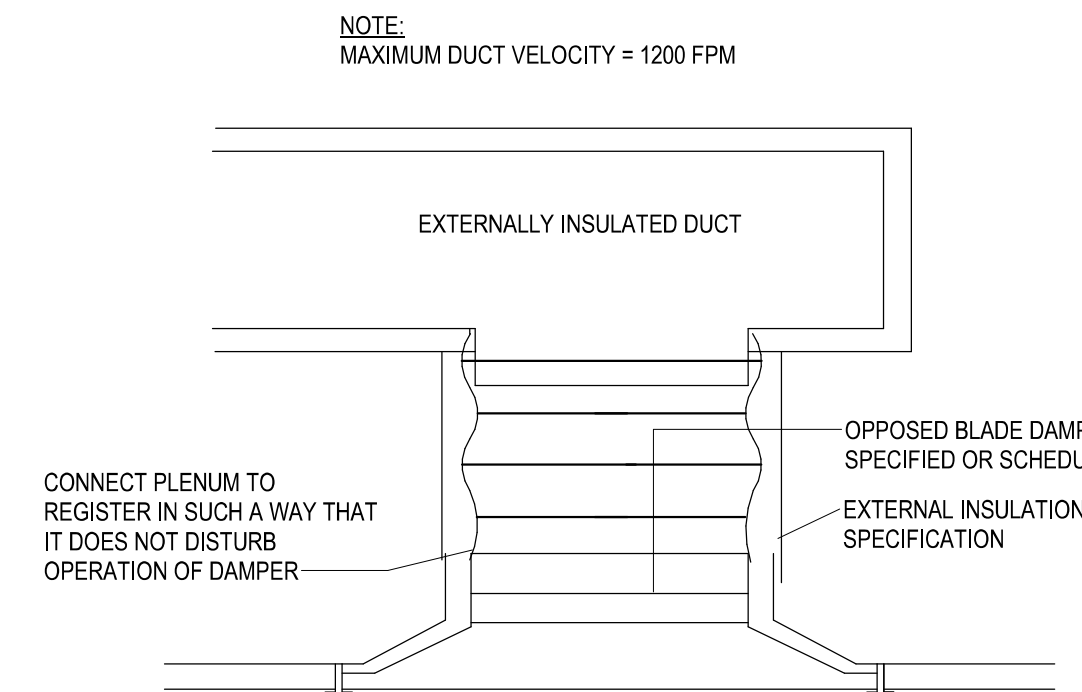


- NOTES:
1. ALL DRIP POINTS ON STEAM MAINS SHALL BE PROVIDED WITH A 300mm (12") MINIMUM HIGH DRIP LEG FROM BOTTOM OF STEAM MAIN TO TRAP INLET. DRIP LEG SHALL HAVE 150mm (6") SCALE POCKET BELOW TRAP INLET.
 2. PROVIDE BYPASS PIPING.

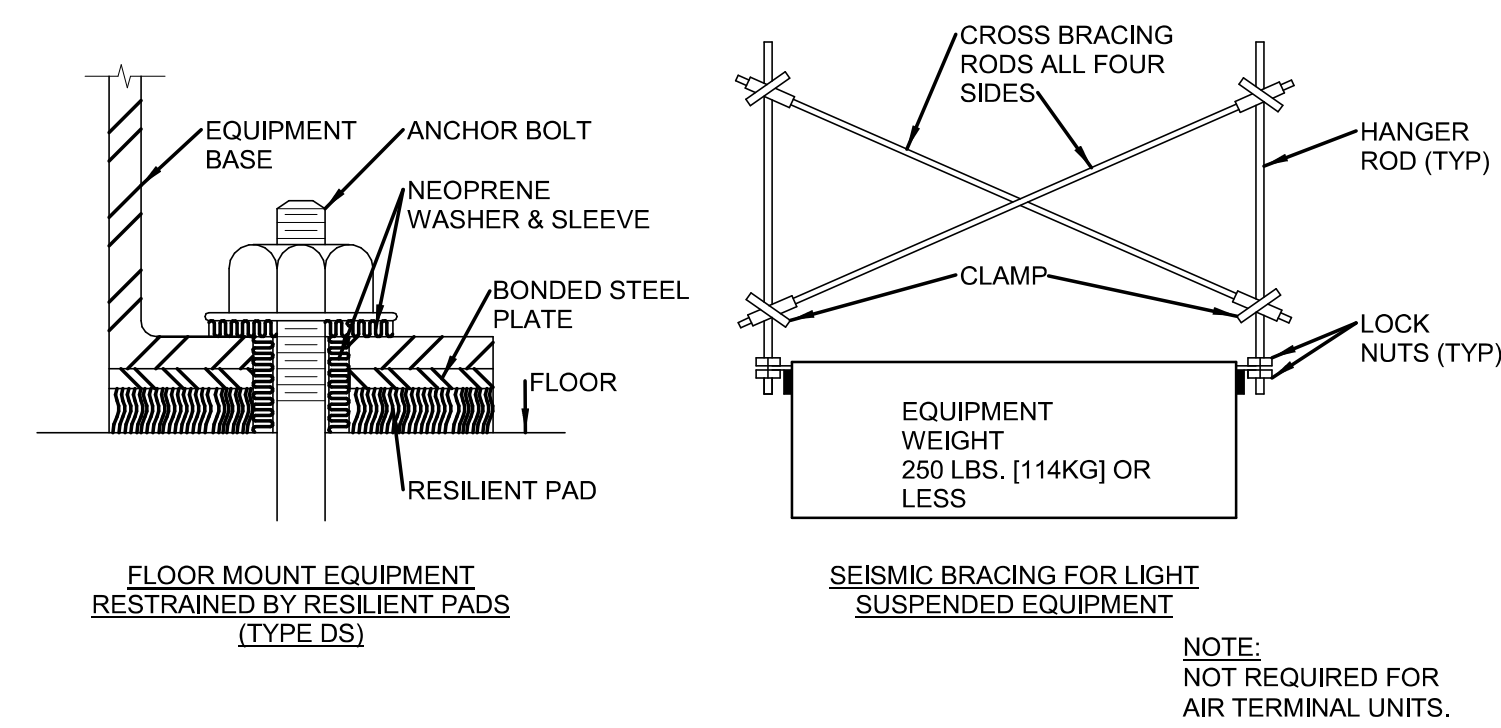
B8 INVERTED BUCKET STEAM TRAP ASSEMBLY
NOT TO SCALE



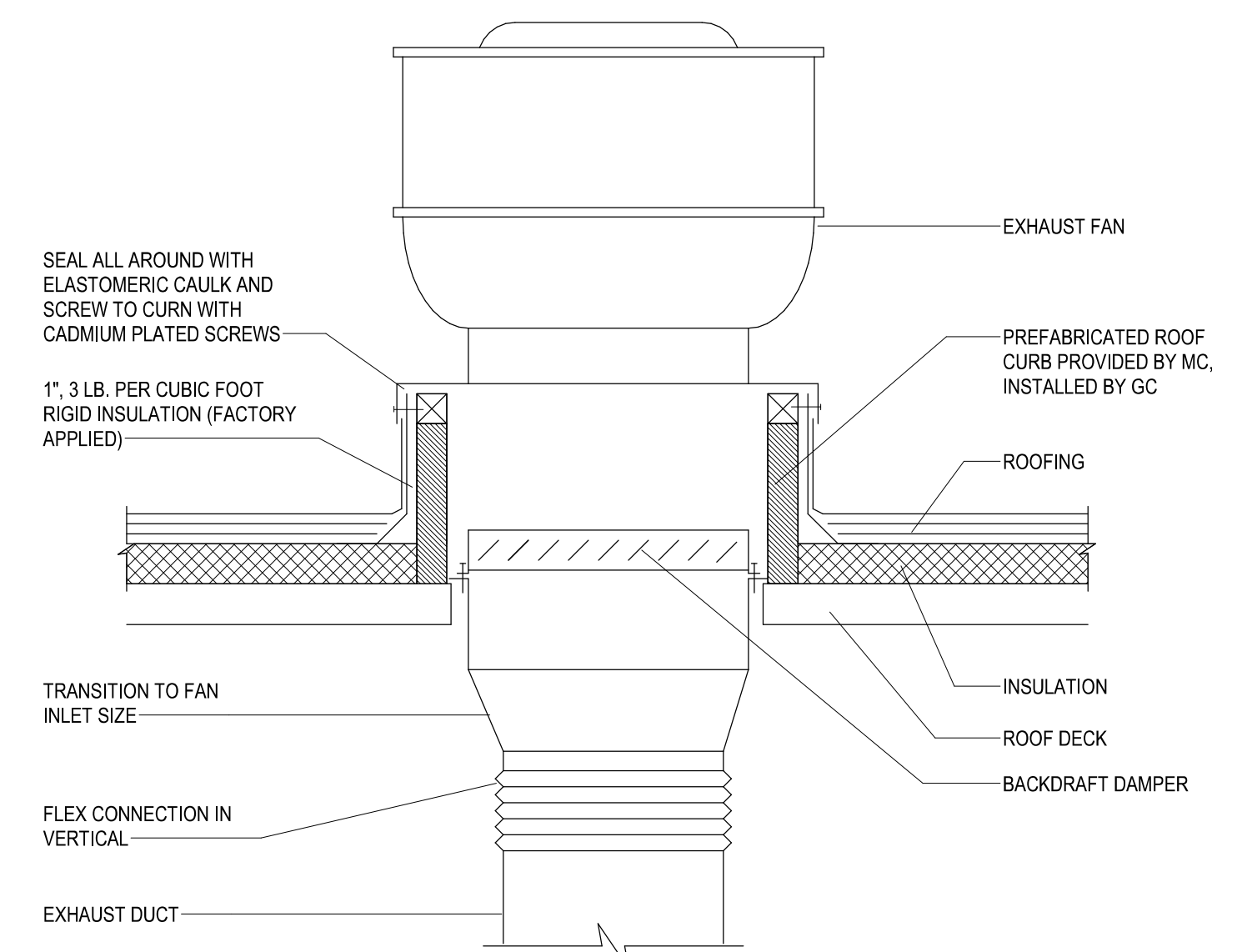
D6 CONDENSING UNIT STAND DETAIL
NOT TO SCALE



D8 DIFFUSER/REGISTER BOTTOM TAP
NOT TO SCALE



F6 SEISMIC BRACING FOR EQUIPMENT
NOT TO SCALE



F8 ROOF MOUNTED EXHAUST FAN
NOT TO SCALE

Revision Number	Revisions:	Date:

CONSULTANTS
CONSULTING STRUCTURAL ENGINEERS

ARCHITECT/ENGINEER OF RECORD

A/E:
HARRELL DESIGN GROUP PC
10720 SIKES PLACE, SUITE 100
CHARLOTTE, NC 28277
704-814-1346
POC: LEE HARRELL PE, LEED AP, QCCP
PRESIDENT
HDG PROJECT: 19022

WWW.HARRELLDG.COM
COPYRIGHT © 2024

STAMP

DRAWING TITLE
DETAILS

APPROVED

PHASE
CONSTRUCTION DOCUMENTS SUBMISSION

FULLY SPRINKLERED

PROJECT TITLE
RENOVATE SPACE FOR LOGISTICS (B-1)

PROJECT NUMBER
564-24-104
BUILDING NUMBER
1

LOCATION
FAYETTEVILLE VA MEDICAL CENTER

ISSUE DATE
11 APRIL 2024

CHECKED
WGG

DRAWN
ANB

DRAWING NUMBER
MH502-A

Engineering Service

VETERANS HEALTH CARE SYSTEM OF THE OZARKS

U.S. Department of Veterans Affairs