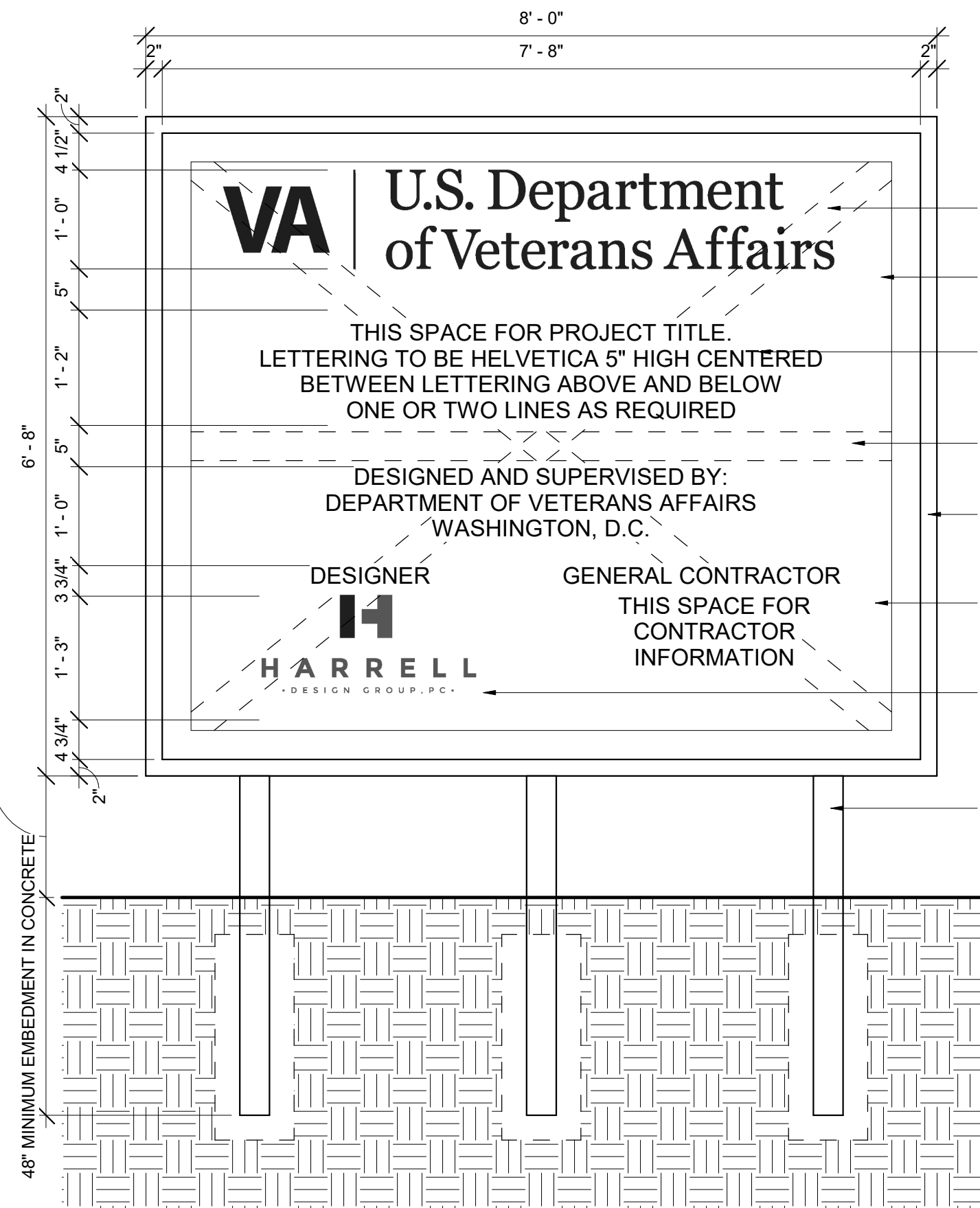
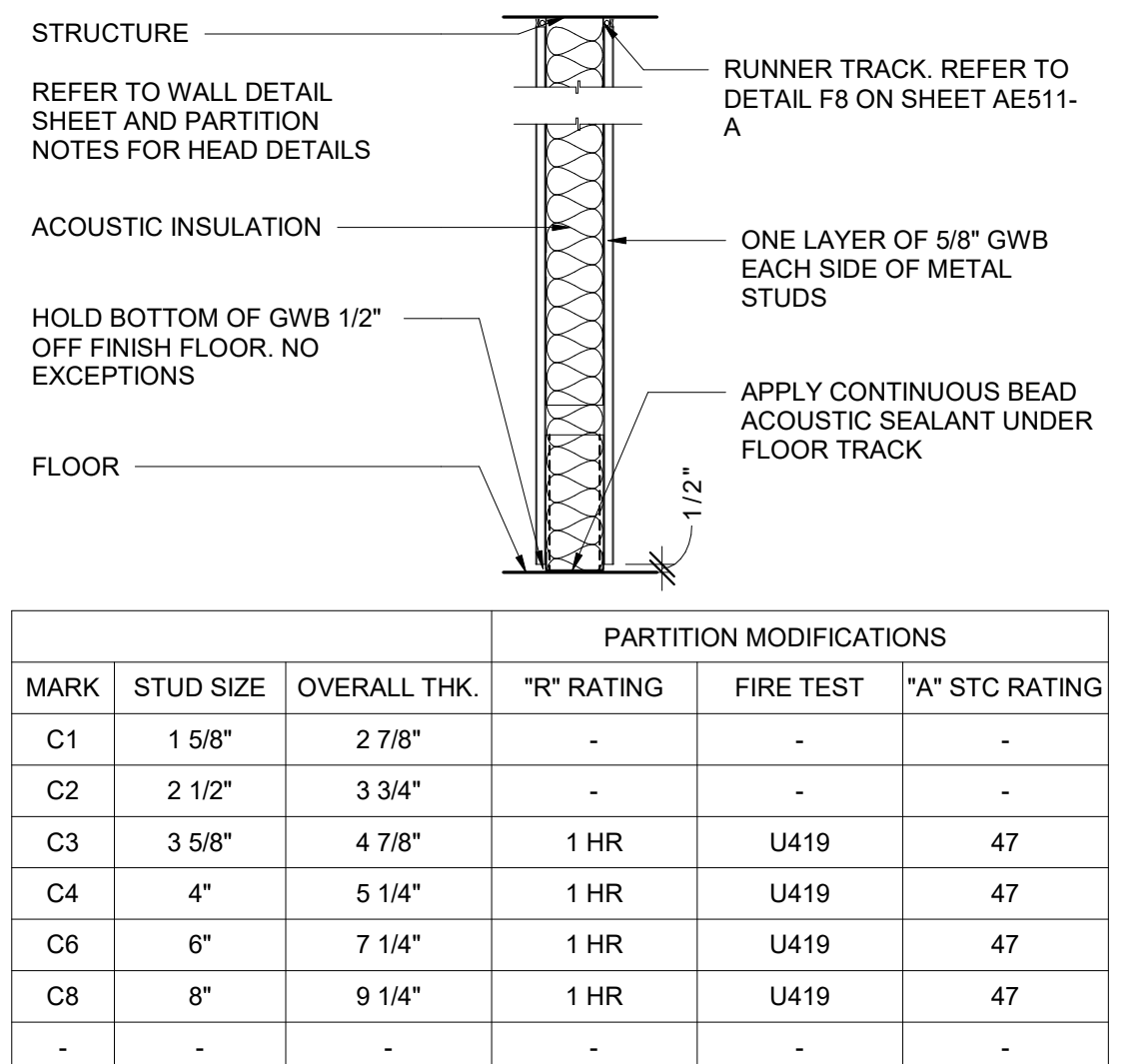


B3 EQUIPMENT PAD
1 1/2" = 1'-0"

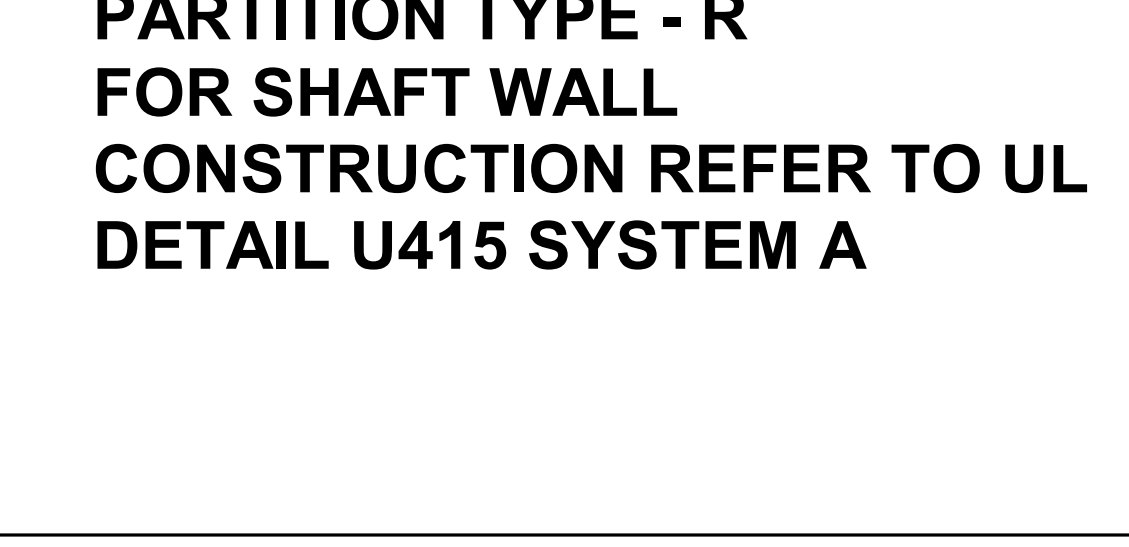


E3 PROJECT SIGNS
3/4" = 1'-0"



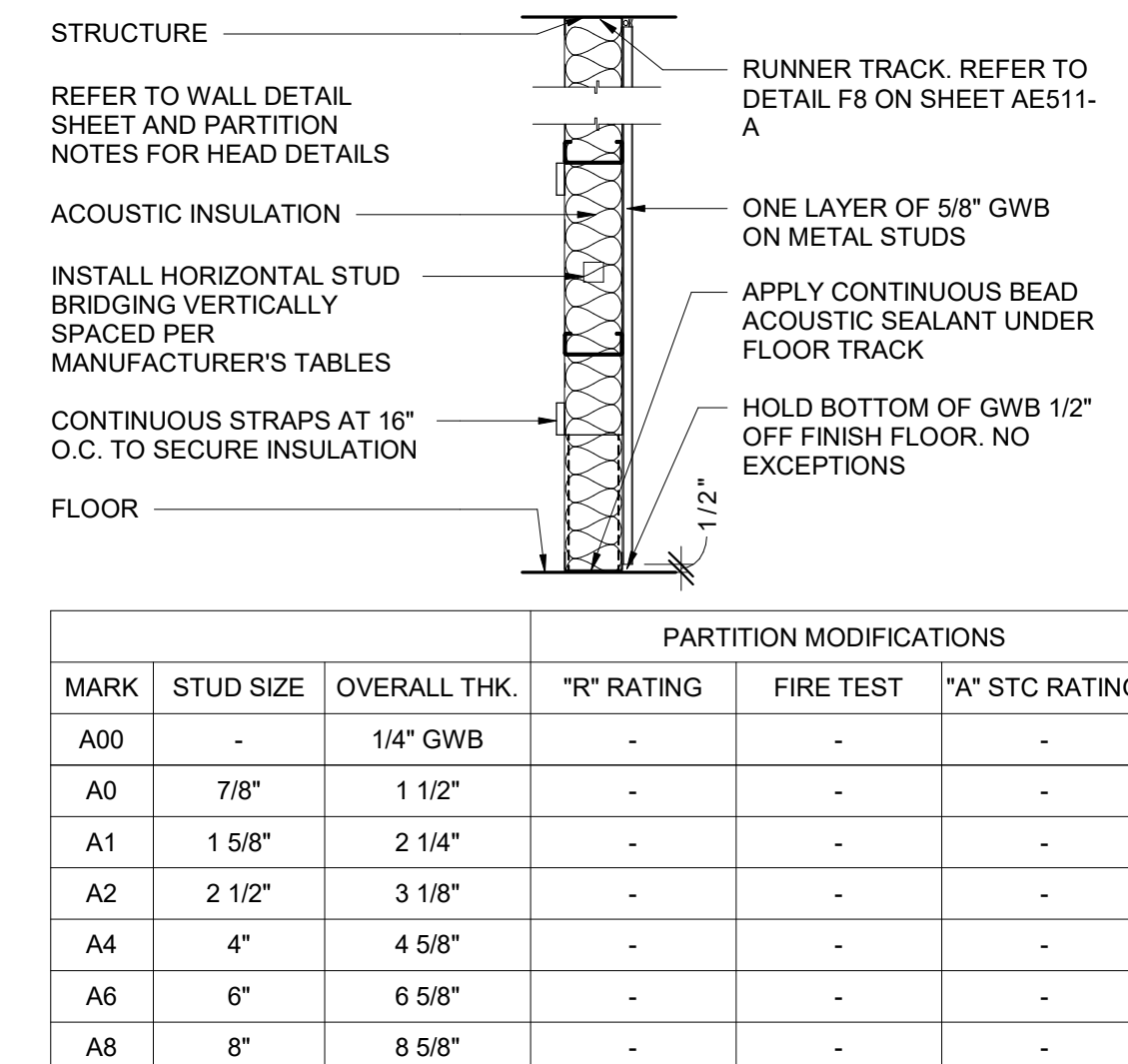
PARTITION TYPE - C
COMPOSITE WALL

PARTITION MODIFICATIONS					
MARK	STUD SIZE	OVERALL THK.	"R" RATING	FIRE TEST	"A" STC RATING
C1	1 5/8"	2 7/8"	-	-	-
C2	2 1/2"	3 3/4"	-	-	-
C3	3 5/8"	4 7/8"	1 HR	U419	47
C4	4"	5 1/4"	1 HR	U419	47
C6	6"	7 1/4"	1 HR	U419	47
C8	8"	9 1/4"	1 HR	U419	47
-	-	-	-	-	-



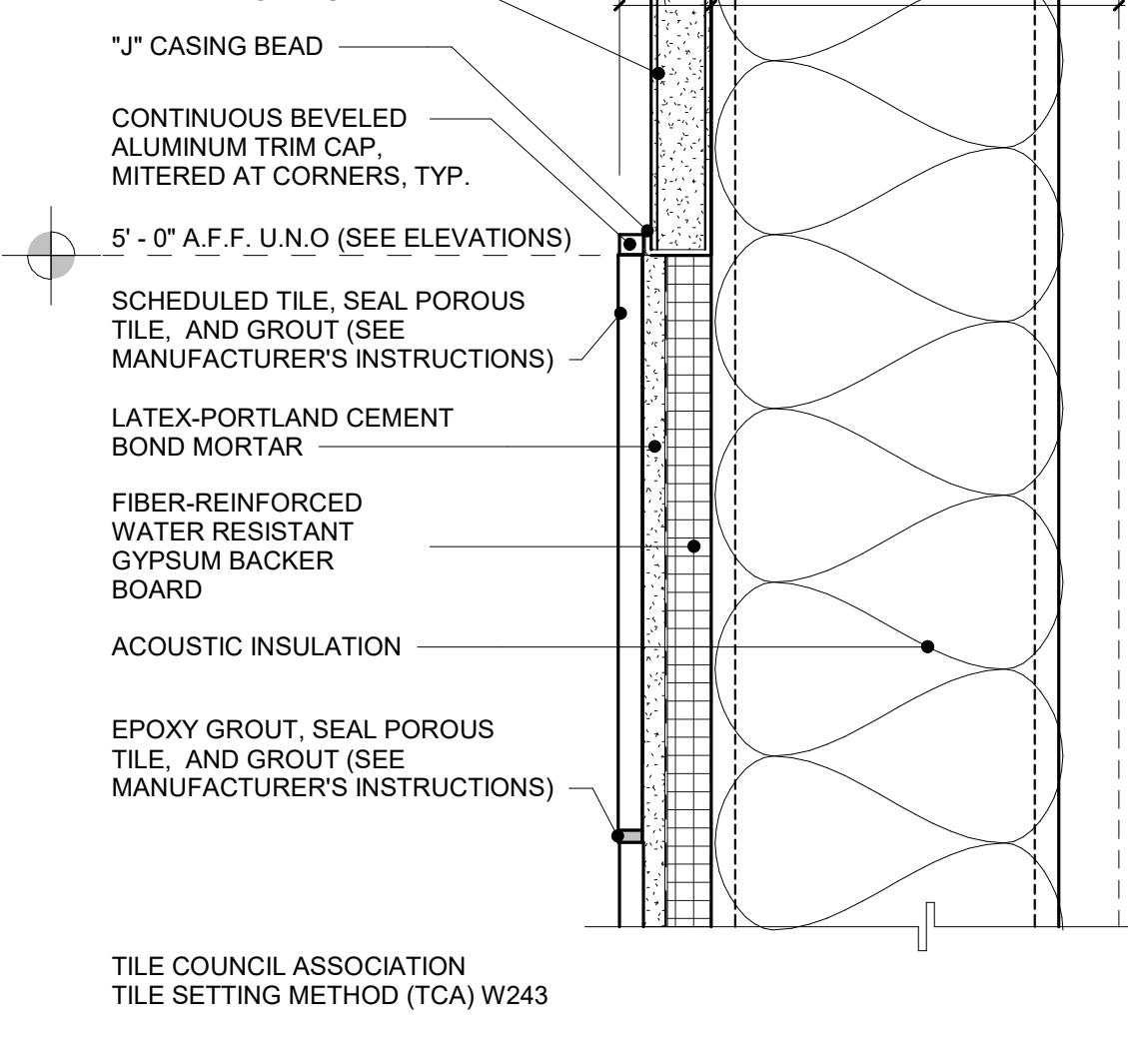
PARTITION TYPE - R
FOR SHAFT WALL CONSTRUCTION REFER TO UL DETAIL U415 SYSTEM A

PARTITION MODIFICATIONS					
MARK	STUD SIZE	OVERALL THK.	"R" RATING	FIRE TEST	"A" STC RATING
S1	2 1/2"	4 3/4"	1 HR	U415	-



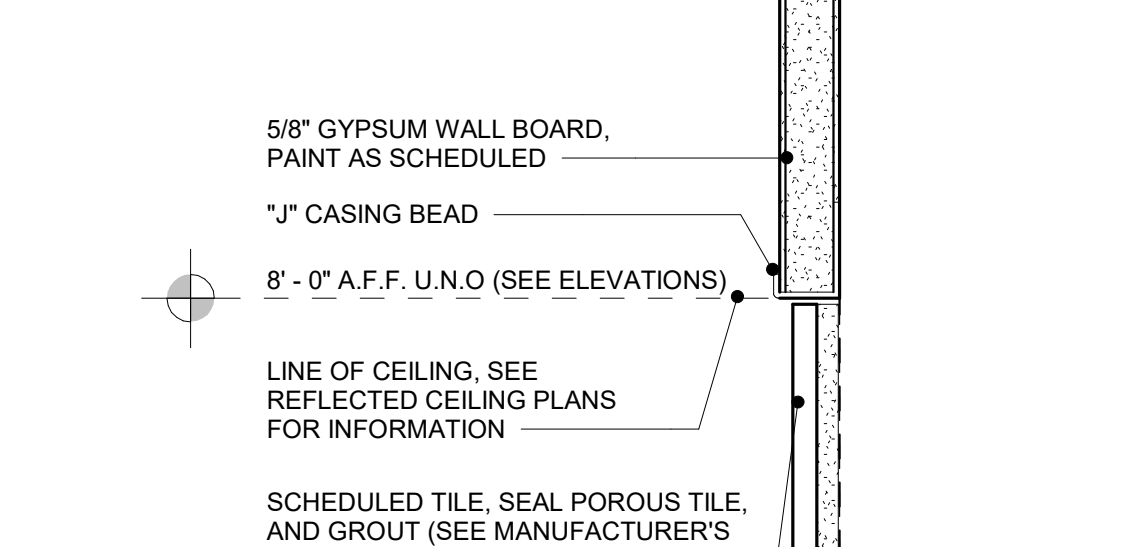
PARTITION TYPE - A
NON-COMPOSITE WALL

PARTITION MODIFICATIONS					
MARK	STUD SIZE	OVERALL THK.	"R" RATING	FIRE TEST	"A" STC RATING
A00	-	1/4" GWB	-	-	-
A0	7/8"	1 1/2"	-	-	-
A1	1 5/8"	2 1/4"	-	-	-
A2	2 1/2"	3 1/8"	-	-	-
A4	4"	4 5/8"	-	-	-
A6	6"	6 5/8"	-	-	-
A8	8"	8 5/8"	-	-	-

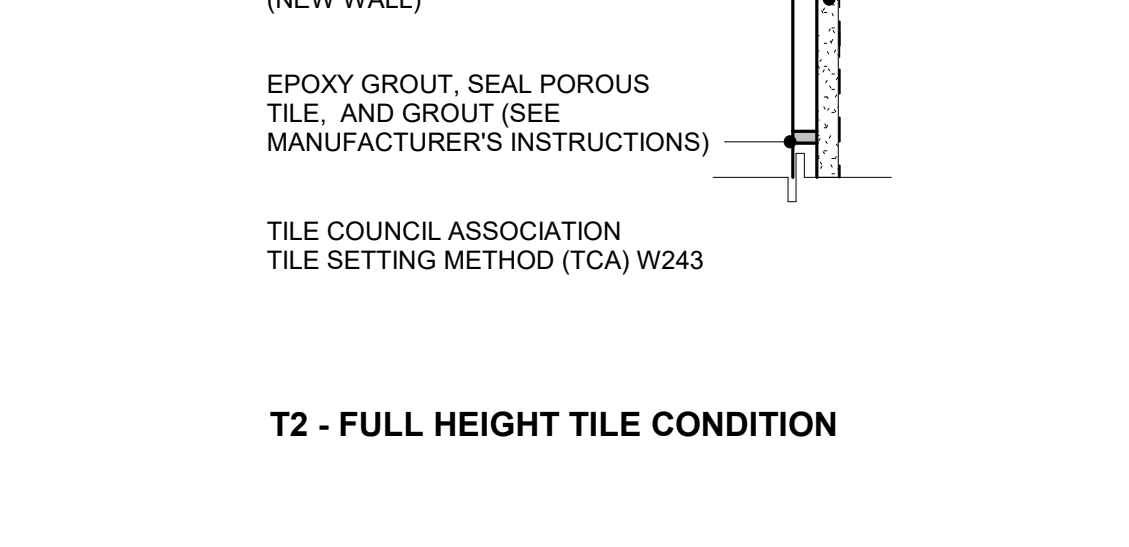


TILE CONDITIONS
WALL TAG SUFFIX TILE CONDITIONS (WHERE APPLICABLE) WALL TAGS I.E., C3T-T2 WHERE APPLICABLE SEE TILE CONDITIONS SUFFIX T1, OR T2

T1 - WAINSCOT TILE WALL CONDITION



T2 - FULL HEIGHT TILE WALL CONDITION



INTERIOR PARTITION NOTES

- REFER TO PLANS FOR LOCATION OF PARTITION TYPES. C4 (UNRATED) IS THE TYPICAL PARTITION TYPE UNON.
- ERECT PARTITIONS IN ORDER OF RATING PRIORITY BEGINNING WITH HIGHEST FIRE RATED PARTITION. CONSTRUCTION OF HIGHER RATED PARTITIONS SHALL BE CONTINUOUS PAST/TROUGH LOWER RATED INTERSECTING PARTITION.
- ALL STUD GAUGES AND LIMITING HEIGHTS IN GYPSON BOARD REFERENCE SPECIFICATIONS.
- ALL PARTITIONS CONTAINING PLUMBING OR HAVING AN EXTERIOR FACE TO BE INSULATED.
- THE FOLLOWING LIST OF ROOMS (IF USED) SHALL HAVE THEIR PERIMETER PARTITIONS INSULATED USING THERMAL INSULATION: (1) ALL ELECTRICAL / MECHANICAL ROOMS; (2) ANY EQUIPMENT / LIGHTING ROOMS; AND (3) STAIRWAYS.
- ALL NEW STUD WALLS RECEIVE ACOUSTICAL INSULATION UNLESS NOTED OTHERWISE.
- ALL PARTITIONS SHALL EXTEND FULL HEIGHT TO UNDERSIDE OF DECK / INTERSTITIAL ABOVE OR HAVE THEIR TOPS BRACED PER PARTITION BRACING DETAILS.
- ALL RATED PARTITIONS TO EXTEND FROM TOP OF SLAB TO UNDERSIDE OF STRUCTURE. SEAL ENTIRE PERIMETER WITH FIRESTOP SEALANT UNON.
- ALL INTERIOR ROOF AND OVERFLOW DRAIN LEADERS TO BE WRAPPED CONTINUOUSLY WITH SOUND ATTENUATION INSULATION.
- INSTALL FRAMING AND GWB TO OFFSET AROUND STRUCTURAL MEMBERS OR OTHER OBSTRUCTIONS TO MAINTAIN FIRE RESISTIVE RATINGS.
- WHERE GWB EXTENDS TO THE UNDERSIDE OF STRUCTURE, STOP GWB 1/2" BELOW LINE OF STRUCTURE AND SEAL AS REQUIRED.
- NON-RATED PARTITIONS SHALL HAVE ENTIRE PERIMETER SEALED WITH ACOUSTICAL SEALANT UNON.
- REFER TO MECHANICAL DRAWINGS FOR DETAILS ON PIPE PENETRATIONS THROUGH ACOUSTICAL PARTITIONS AS WELL AS RATED PARTITIONS.
- INSTALL METAL STUD BLOCKING IN PARTITIONS AT ALL WALL MOUNTED EQUIPMENT, WHETHER CC, VC OR VV.
- ALL PARTITIONS SCHEDULED TO RECEIVE TILE IN BATHING ROOMS AND/OR LOCATED ADJACENT TO OR BEHIND PLUMBING FIXTURES SHALL BE CONSTRUCTED OF WATER-RESISTANT CORE GWB.
- FOR MOLD PREVENTION, DO NOT INSTALL GWB IN DIRECT CONTACT WITH THE FLOOR. ALL GWB SHALL BE SHIMMED 1/2" OFF THE FLOOR WITH NON-POROUS SHIMS. PLASTIC NON-POROUS HORSESHOE SHIMS ARE RECOMMENDED. GWB SHIMS ARE NOT ACCEPTABLE.
- CABLES PENETRATING RATED PARTITIONS (WITH OR WITHOUT SLEEVES) SHALL BE SECURED ON BOTH SIDES OF THE PARTITION. METHOD OF SECURING THE CABLES SHALL BE SLEEVED TO PRECLUDE ANY MOVEMENT OF THE CABLE DISTURBING THE INTEGRITY OF THE PENETRATION FIRE - STOPPING ASSEMBLY. SEE SPECIFICATIONS.
- REFER TO DRAWINGS FOR TYPICAL WALL FRAMING FOR FIRE DAMPERS IN RATED WALLS. COORDINATE EXACT FRAMING REQUIREMENTS WITH FIRE DAMPER MANUFACTURER. COORDINATE ALL PARTITION CONSTRUCTION WITH MECHANICAL PRIME CONTRACTOR PRIOR TO COMMENCING PARTITION CONSTRUCTION. GENERAL CONTRACTOR SHALL OBTAIN FROM THE MECHANICAL CONTRACTOR THE PROPER INSTALLATION INSTRUCTIONS FOR ALL FIRE AND SMOKE DAMPERS AND SHALL PROVIDE THE REQUIRED METAL FRAMING, DRYWALL, ETC. ACCORDING TO THESE INSTRUCTIONS. INSTALLATION INSTRUCTIONS TO BE SUBMITTED TO THE ARCHITECT AND OWNER FOR REVIEW.
- CONTRACTOR SHALL BE RESPONSIBLE FOR PROVIDING FIRE AND SMOKE SEALED PENETRATIONS IN ACCORDANCE WITH TESTED AND APPROVED PENETRATION SEALING SYSTEM FOR THE PARTITION CONSTRUCTION / FIRE RATING AND THE PENETRATING ELEMENTS. PARTITION TYPES AS NOTED BY THE SYMBOL CONTINUE BETWEEN ROOMSPACE CORNERS OR ANY INTERSECTING PARTITION.
- DIFFERING PARTITION TYPES SHALL ALIGN SO THAT WALL PLANES CONTINUE UNBROKEN WITHIN/CROSS ROOMS AND/OR SPACES.
- COVER ALL EXISTING EXTERIOR WALLS AND MASONRY / CONCRETE WALLS WITH PARTITION TYPE ADD UNON.
- INSTALL BRIDGING ON NON-COMPOSITE STUD WALLS.

PARTITION TAG NOTES

PARTITION TAGS ARE READ LEFT TO RIGHT:

- THE FIRST CHARACTER INDICATES WHICH PARTITION / BARRIER TYPE TO REFERENCE FOR CONSTRUCTION.
- THE SECOND CHARACTER INDICATES A REFERENCE TO THE STRUCTURAL CORE THICKNESS (STUD OR CMU).
- THE THIRD CHARACTER INDICATES:
 - "R" - FIRE RATED
 - "S" - FIRE RATED / SMOKE-RESISTIVE PARTITION (UNRATED)
 - "A" - FIRE RATED / SMOKE-RESISTIVE PARTITION (UNRATED)
 - "V" = "R" + "S" - FIRE RATED / SMOKE BARRIER
 - "W" + "A" + "S" - ACOUSTICAL / SMOKE RESISTANT PARTITION
 - "Z" = "R" + "S" + "A" - FIRE RATED / SMOKE / ACOUSTICAL BARRIER

EXAMPLE:
A PARTITION TYPE C3T INDICATES A 4 7/8" 1 HOUR RATED BARRIER WITH ACOUSTICAL INSULATION

NOTE:
THE RATING (FIRE) AND UL ASSEMBLY DESIGNATION ONLY APPLIES WHEN THE PARTITION SUFFIX "R" IS ADDED TO THE WALL TAG(S). OTHERWISE THE PARTITION TYPE IS A NON-RATED WALL AND / OR SOME OTHER DISTINCTION NOTED UNDER PARTITION TAG NOTES.

CONSULTANTS
CONSULTING STRUCTURAL ENGINEERS

BRITT, PETERS AND ASSOCIATES
consulting engineers

ARCHITECT/ENGINEER OF RECORD

A/E:
HARRELL DESIGN GROUP PC
10720 SIKES PLACE, SUITE 100
CHARLOTTE, NC 28277
704-814-1346
POC: LEE HARRELL PE, LEED AP, QCCP
PRESIDENT
HDG PROJECT: 19022

HARRELL DESIGN GROUP PC
WWW.HARRELLDG.COM
COPYRIGHT © 2024

STAMP

DRAWING TITLE
PARTITION TYPES AND STANDARD DETAILS

APPROVED

PHASE
CONSTRUCTION DOCUMENTS SUBMISSION

FULLY SPRINKLERED

PROJECT TITLE
RENOVATE SPACE FOR LOGISTICS (B-1)

LOCATION
FAYETTEVILLE VA MEDICAL CENTER

ISSUE DATE
11 APRIL 2024

CHECKED
JC

DRAWN
MS

PROJECT NUMBER
564-24-104

BUILDING NUMBER
1

DRAWING NUMBER
G1501-A

Engineering Service
VETERANS HEALTH CARE SYSTEM OF THE OZARKS

4/12/2024 11:19:56 AM
BIM 360://19022 - Fayetteville IDIQ Project No. 64-19-403 Renovation of SPS/19022 - ARCH - R2020.rvt