

TYPE OF CONSTRUCTION/PROJECT ACTIVITY TABLE		PATIENT RISK GROUP TABLE	
TYPE A	INSPECTION AND NON-INVASIVE ACTIVITIES INCLUDES BUT IS NOT LIMITED TO: • REMOVAL OF CEILING TILES FOR VISUAL INSPECTION LIMITED TO 1 TILE IN 50 SQUARE FEET • PAINTING (BUT NOT SANDING), WALL COVERING • ELECTRICAL TRIM WORK, MINOR PLUMBING, AND ACTIVITIES THAT DO NOT GENERATE DUST OR REQUIRE CUTTING OF WALLS OR ACCESS TO CEILINGS OTHER THAN FOR VISUAL INSPECTION	GROUP 1-LOW RISK • OFFICE AREAS (NON-CLINICAL)	GROUP 2-MEDIUM RISK • CARDIOLOGY • ECHOCARDIOLOGY • ENDOSCOPY-GI • PHYSICAL THERAPY • RADIOLOGY/MRI • NUCLEAR MEDICINE • RESPIRATORY CARE (EXCEPT - BRONCHOSCOPY AREA) • CAFETERIA • OUTPATIENT AREAS-CLINICS AND OFFICES (EXCEPTION: TRANSPLANT AND ONCOLOGY)
TYPE B	SMALL SCALE, SHORT DURATION ACTIVITIES THAT CREATE MINIMAL DUST INCLUDES BUT IS NOT LIMITED TO: • INSTALLATION OF TELEPHONE AND COMPUTER CABLING • ACCESS TO CHASE SPACES • CUTTING OF WALLS OR CEILING WHERE DUST MIGRATION CAN BE CONTROLLED	GROUP 3-HIGH RISK • EMERGENCY ROOM • POST ANESTHESIA • CARE UNITS • LABOR AND DELIVERY • PEDIATRICS • ADMISSION/DISCHARGE AREA • LABORATORIES • PHARMACY • INPATIENT UNITS (NOT OTHERWISE SPECIFIED)	GROUP 4-HIGHEST RISK • ALL OPERATING ROOMS INCLUDING LABOR AND DELIVERY • ANESTHESIA AND PUMP AREAS • CENTRAL EQUIPMENT/STERILE SUPPLY • CARDIAC CATHETERIZATION AND ANGIOGRAPHY AREAS • INTERVENTIONAL RADIOLOGY • RADIATION ONCOLOGY • ALL INTENSIVE CARE UNITS • NEWBORN NURSERIES, INCLUDING NICU • DIALYSIS UNIT • ONCOLOGY-INPATIENT AND OUTPATIENT • TRANSPLANT-INPATIENT AND OUTPATIENT • PHARMACY ADMITTURE • NEGATIVE PRESSURE ISOLATION ROOMS/AREAS (INCLUDING BRONCHOSCOPY AREA)
TYPE C	WORK THAT GENERATES A MODERATE TO HIGH LEVEL OF DUST OR REQUIRES DEMOLITION OR REMOVAL OF ANY FIXED BUILDING COMPONENTS OR ASSEMBLIES INCLUDES BUT IS NOT LIMITED TO: • SANDING OF WALLS FOR PAINTING OR WALL COVERING • REMOVAL OF FLOOR COVERINGS, CEILING TILES AND CASEWORK • NEW WALL CONSTRUCTION • MINOR DUCT WORK OR ELECTRICAL WORK ABOVE CEILINGS • MAJOR CABLING ACTIVITIES • ANY ACTIVITY THAT CANNOT BE COMPLETED WITHIN A SINGLE WORK SHIFT		
TYPE D	MAJOR DEMOLITION AND CONSTRUCTION PROJECTS INCLUDES BUT IS NOT LIMITED TO: • ACTIVITIES THAT REQUIRE CONSECUTIVE WORK SHIFTS • REQUIRES HEAVY DEMOLITION OR REMOVAL OF A COMPLETE CEILING SYSTEM • NEW CONSTRUCTION		

INFECTION CONTROL MATRIX-CLASS OF PRECAUTIONS: CONSTRUCTION PROJECT BY PATIENT RISK				
PATIENT RISK GROUP	TYPE A	TYPE B	TYPE C	TYPE D
LOW RISK GROUP 1	I	II	III	IV
MEDIUM RISK GROUP 2	I	III	IV	IV
HIGH RISK GROUP 3	I	III/IV	IV	IV
HIGHEST RISK GROUP 4	III	III/IV	III/IV	IV

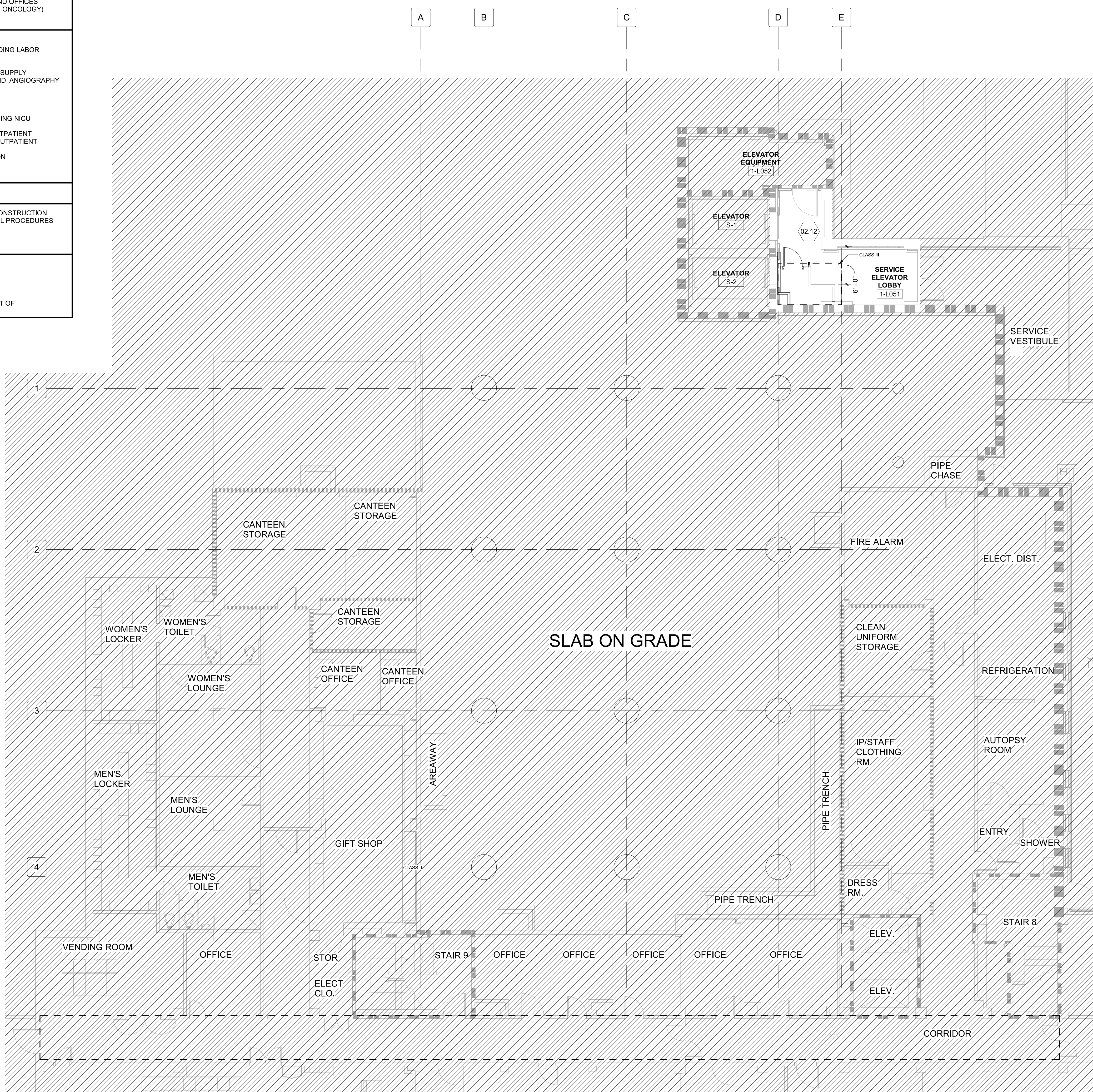
NOTE: INFECTION CONTROL APPROVAL WILL BE REQUIRED WHEN THE CONSTRUCTION ACTIVITY AND RISK LEVEL INDICATE THAT CLASS III OR CLASS IV CONTROL PROCEDURES ARE NECESSARY.

ICRA GENERAL NOTES

A. PROVIDE CONTAINMENT AS REQUIRED (BY HOSPITAL) INFECTION CONTROL REPRESENTATIVE FOR WORK OUTSIDE MAJOR AREA.
 B. PROVIDE CONTAINMENT AT THE FLOOR BELOW FOR ANY WORK IN THE CEILING PLENUM.
 C. PROVIDE TEMPORARY DOOR WITH GASKETING TO PREVENT THE MOVEMENT OF DUST.
 D. PROVIDE TEMPORARY EMERGENCY EXIT FROM CONSTRUCTION ZONE; HOWEVER, ALL GENERAL CONSTRUCTION TRAFFIC SHOULD BE THROUGH VESTIBULE.
 E. CONTRACTOR TO PROTECT ALL FINISHES INCLUDING (BUT NOT LIMITED TO) FLOORING, CEILING, WALL SURFACES, DOORS, AND DOOR FRAMES DURING THE MOVEMENT OF MATERIALS TO/FROM LIMIT OF WORK. COORDINATE WITH COR AND SPECIFICATIONS FOR PROCEDURES/REQUIREMENTS.

IT IS THE CONTRACTOR'S RESPONSIBILITY TO PROVIDE THE FOLLOWING INFECTION CONTROL PRECAUTIONS DEPENDING UPON THE AREA CLASS DESIGNATION

DURING CONSTRUCTION PROJECT		UPON COMPLETION OF PROJECT
CLASS I	<ol style="list-style-type: none"> EXECUTE WORK BY METHODS TO MINIMIZE RAISING DUST FROM CONSTRUCTION OPERATIONS. IMMEDIATELY REPLACE A CEILING TILE DISPLACED FOR VISUAL INSPECTION. 	<ol style="list-style-type: none"> WIPE SURFACES TO REMOVE DUST.
CLASS II	<ol style="list-style-type: none"> INCLUDES ALL ACTIVITIES REQUIRED BY CLASS I. PROVIDE ACTIVE MEANS TO PREVENT AIRBORNE DUST FROM DISPERSING INTO ATMOSPHERE. WATER MIST WORK SURFACES TO CONTROL DUST WHILE CUTTING. SEAL UNUSED DOORS WITH DUCT TAPE. BLOCK OFF AND SEAL AIR VENTS. PLACE ADHESIVE WALK-OFF MATS AT ENTRANCE AND EXIT OF WORK AREA. REPLACE USED MATS IN ACCORDANCE WITH MANUFACTURER'S RECOMMENDATIONS. REMOVE OR ISOLATE HVAC SYSTEM IN AREAS WHERE WORK IS BEING DONE TO PREVENT CONTAMINATION OF DUCT SYSTEM. 	<ol style="list-style-type: none"> WIPE WORK SURFACES WITH DISINFECTANT. CONTAIN CONSTRUCTION WASTE BEFORE TRANSPORT IN TIGHTLY COVERED CONTAINERS. WET MOP AND/OR VACUUM WORK AREA WITH HEPA FILTERED VACUUM BEFORE LEAVING WORK AREAS. REMOVE ISOLATION OF HVAC SYSTEM IN AREAS WHERE WORK WAS BEING PERFORMED.
CLASS III	<ol style="list-style-type: none"> INCLUDES ALL ACTIVITIES REQUIRED BY CLASS II. OBTAIN INFECTION CONTROL PERMIT FROM HOSPITAL SAFETY OFFICER OR FACILITIES MANAGEMENT MAINTENANCE AND ENGINEERING DEPARTMENT BEFORE CONSTRUCTION BEGINS. REMOVE OR ISOLATE HVAC SYSTEM IN AREA WHERE WORK IS BEING DONE TO PREVENT CONTAMINATION OF DUCT SYSTEM. COMPLETE ALL CRITICAL BARRIERS BEFORE CONSTRUCTION BEGINS OR IMPLEMENT CONTROL CUBE METHOD. MAINTAIN NEGATIVE AIR PRESSURE WITHIN WORK SITE UTILIZING HEPA-EQUIPPED AIR FILTRATION UNITS. CONTAIN CONSTRUCTION WASTE BEFORE TRANSPORT IN TIGHTLY COVERED CONTAINERS. COVER TRANSPORT RECEPTACLES OR CARS. TAPE COVERS. WET MOP AND/OR VACUUM WITH HEPA FILTERED VACUUM BEFORE LEAVING WORK AREAS. 	<ol style="list-style-type: none"> REMOVE BARRIER MATERIALS CAREFULLY TO MINIMIZE SPREADING OF DIRT AND DEBRIS ASSOCIATED WITH CONSTRUCTION. CONTAIN CONSTRUCTION WASTE BEFORE TRANSPORT IN TIGHTLY COVERED CONTAINERS. COVER TRANSPORT RECEPTACLES OR CARS, TAPE COVERING. VACUUM WORK WITH HEPA-FILTERED VACUUMS. WET MOP WITH DISINFECTANT AFTER BARRIERS ARE REMOVED. REMOVE ISOLATION OF HVAC SYSTEM IN AREAS WHERE WORK WAS BEING PERFORMED.
CLASS IV	<ol style="list-style-type: none"> INCLUDES ALL ACTIVITIES REQUIRED BY CLASS III. OBTAIN INFECTION CONTROL PERMIT FROM HOSPITAL SAFETY OFFICER OR FACILITIES MANAGEMENT MAINTENANCE AND ENGINEERING DEPARTMENT BEFORE CONSTRUCTION BEGINS. ISOLATE HVAC SYSTEM IN AREAS WHERE WORK IS BEING DONE TO PREVENT CONTAMINATION OF DUCT SYSTEM. COMPLETE ALL CRITICAL BARRIERS OR IMPLEMENT CONTROL CUBE METHOD BEFORE CONSTRUCTION BEGINS. MAINTAIN NEGATIVE AIR PRESSURE WITHIN WORK SITE UTILIZING HEPA-EQUIPPED AIR FILTRATION UNITS. SEAL HOLES, PIPES, CONDUITS, AND PUNCTURES APPROPRIATELY. CONSTRUCT ANTEROOM AND REQUIRE ALL PERSONNEL TO PASS-THROUGH THIS ROOM SO THEY CAN BE VACUUMED USING A HEPA VACUUM CLEANER BEFORE LEAVING WORK SITE OR THEY CAN WEAR CLOTH OR PAPER COVERALLS THAT ARE REMOVED EACH TIME THEY LEAVE THE WORK SITE. ALL PERSONNEL ENTERING WORK SITE ARE REQUIRED TO WEAR SHOE COVERS. SHOE COVERS MUST BE CHANGED EACH TIME THE WORKER EXITS THE WORK AREA. PLACE ADHESIVE WALK-OFF MATS AT ENTRANCE TO WORK AREA WITH ANTEROOM. REPLACE PER MANUFACTURER'S RECOMMENDATIONS. DO NOT REMOVE BARRIERS FROM WORK AREA UNTIL EACH COMPLETED PROJECT PHASE IS INSPECTED BY THE HOSPITAL SAFETY OFFICER, FACILITIES MANAGEMENT MAINTENANCE AND ENGINEERING DEPARTMENT AND THOROUGHLY CLEANED BY THE HOSPITAL ENVIRONMENTAL SERVICES DEPARTMENT OR THEIR CONTRACTED ENVIRONMENTAL SERVICES COMPANY. CONTAIN CONSTRUCTION WASTE BEFORE TRANSPORT IN TIGHTLY COVERED CONTAINERS. COVER TRANSPORT RECEPTACLES OR CARS. TAPE COVERING. VACUUM WITH HEPA FILTERED VACUUM. WET MOP WITH DISINFECTANT AFTER BARRIERS ARE REMOVED. 	<ol style="list-style-type: none"> REMOVE BARRIER MATERIALS CAREFULLY TO MINIMIZE SPREADING OF DIRT AND DEBRIS ASSOCIATED WITH CONSTRUCTION. CONTAIN CONSTRUCTION WASTE BEFORE TRANSPORT IN TIGHTLY COVERED CONTAINERS. COVER TRANSPORT RECEPTACLES OR CARS, TAPE COVERING. VACUUM WORK WITH HEPA-FILTERED VACUUMS. WET MOP WITH DISINFECTANT AFTER BARRIERS ARE REMOVED. REMOVE ISOLATION OF HVAC SYSTEM IN AREAS WHERE WORK WAS BEING PERFORMED.



GENERAL SHEET NOTES

- A. ELEVATOR S-2 IS REMOVED FROM SERVICE FOR 4 WEEKS DURING THIS WORK
- B. BASEMENT WORK OCCURS DURING 4 WEEK PERIOD, MAX.

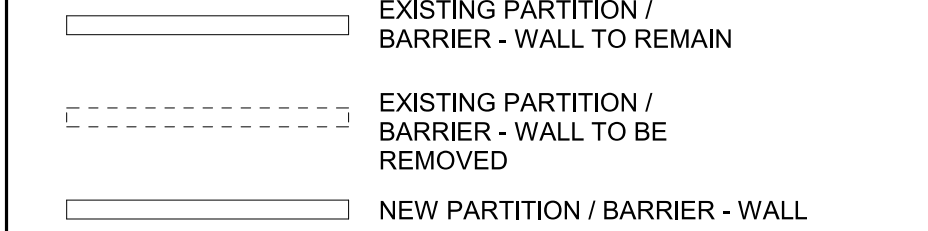
SHEET KEYNOTES

- 02.12 ICRA BARRIER TO BE INSTALLED PRIOR TO START OF CONSTRUCTION PERIOD WORK ACTIVITIES. BARRIER TO BE REMOVED UPON COMPLETING CONSTRUCTION PERIOD WORK ACTIVITIES. BARRIER INCLUDES PAINTED TEMPORARY WALLS, DOOR, AND LOCKING HARDWARE. COORDINATE KEYING WITH VA-COR.

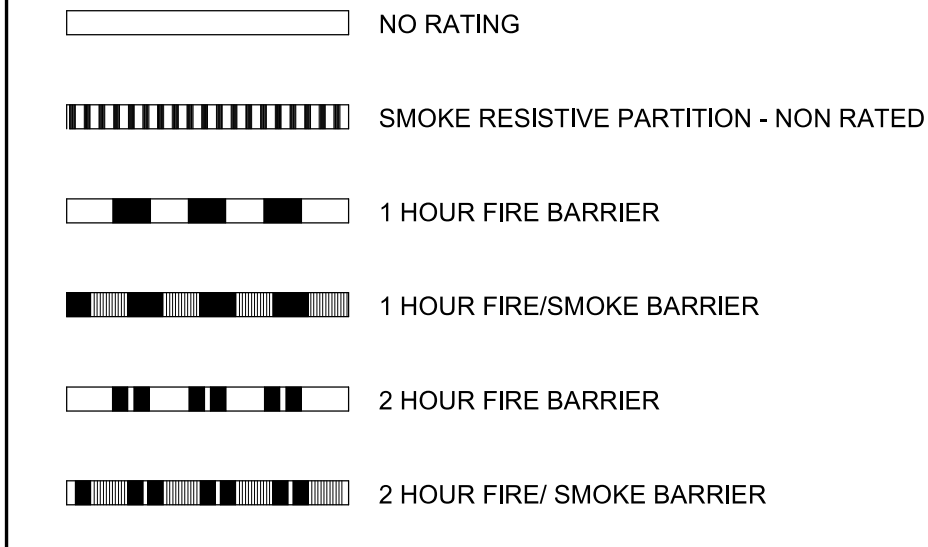
SYMBOL LEGEND



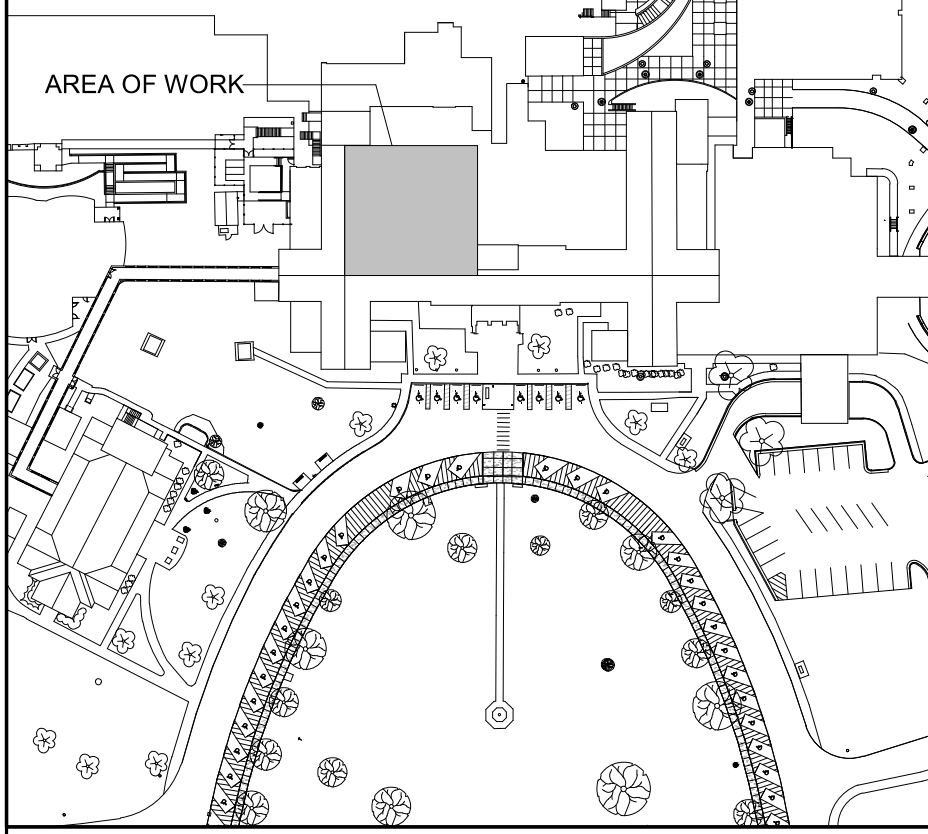
PARTITION LEGEND



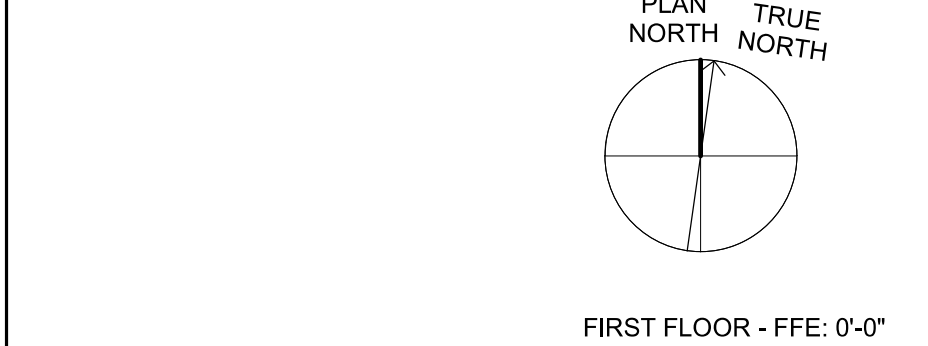
PARTITION GRAPHICS



KEY PLAN



NORTH LEGEND



F5 BASEMENT FLOOR - ICRA PLAN
1/8" = 1'-0"

4/12/2024 11:19:38 AM
BIM 350/19022 - Fayetteville DDC Project No. 64-19-003 Renovation of SPS/19022 - ARCH - R2020.rvt

Revision Number	Revisions:	Date:

CONSULTANTS	

ARCHITECT/ENGINEER OF RECORD	
A/E: HARRELL DESIGN GROUP PC 10720 SIKES PLACE, SUITE 100 CHARLOTTE, NC 28277 704-814-1346 POC: LEE HARRELL PE, LEED AP, QCCP PRESIDENT HDG PROJECT: 19022	

STAMP

DRAWING TITLE
BASEMENT FLOOR - ICRA PLAN
APPROVED

PHASE
CONSTRUCTION DOCUMENTS SUBMISSION
FULLY SPRINKLERED

PROJECT TITLE
RENOVATE SPACE FOR LOGISTICS (B-1)
LOCATION FAYETTEVILLE VA MEDICAL CENTER
ISSUE DATE 11 APRIL 2024
CHECKED Checker
DRAWN Author

PROJECT NUMBER
564-24-104
BUILDING NUMBER
1
DRAWING NUMBER
GC101-A

Engineering Service
VETERANS HEALTH CARE SYSTEM OF THE OZARKS
U.S. Department of Veterans Affairs