



| Revision Number | Revisions: | Date: |
|-----------------|------------|-------|
| | | |
| | | |
| | | |
| | | |
| | | |

CONSULTANTS
CONSULTING STRUCTURAL ENGINEERS



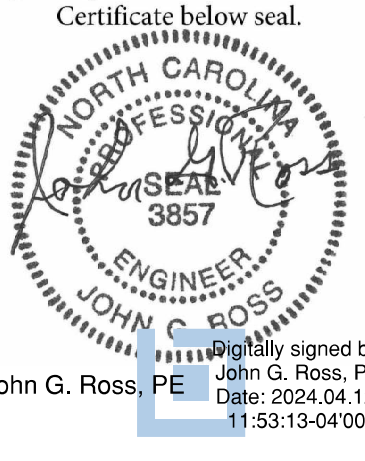
ARCHITECT/ENGINEER OF RECORD

A/E:
HARRELL DESIGN GROUP PC
10720 SIKES PLACE, SUITE 100
CHARLOTTE, NC 28277
704-814-1346
POC: LEE HARRELL PE, LEED AP, QCCP
PRESIDENT
HDG PROJECT: 19022



WWW.HARRELLDG.COM
COPYRIGHT © 2024

Digital Signature not valid without Certificate below seal.



John G. Ross, PE
Digitally signed by John G. Ross, PE
Date: 2024.04.12 11:24:06-0400

DRAWING TITLE
FIRST FLOOR - POWER PLAN

APPROVED

PHASE
CONSTRUCTION DOCUMENTS SUBMISSION

FULLY SPRINKLERED

PROJECT TITLE
RENOVATE SPACE FOR LOGISTICS (B-1)

LOCATION
FAYETTEVILLE VA MEDICAL CENTER

ISSUE DATE
11 APRIL 2024

CHECKED
CSR

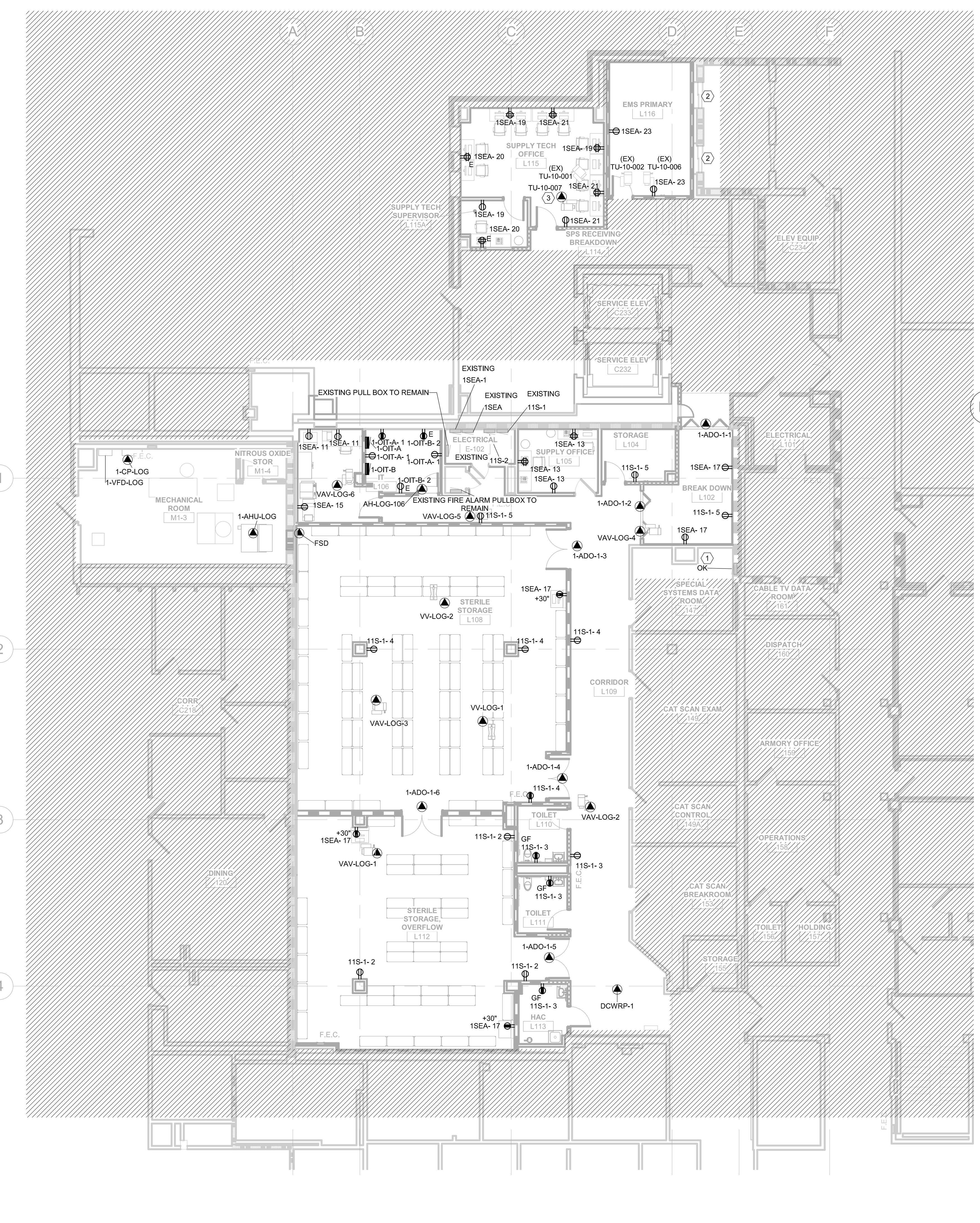
DRAWN
CSR

PROJECT NUMBER
564-24-104

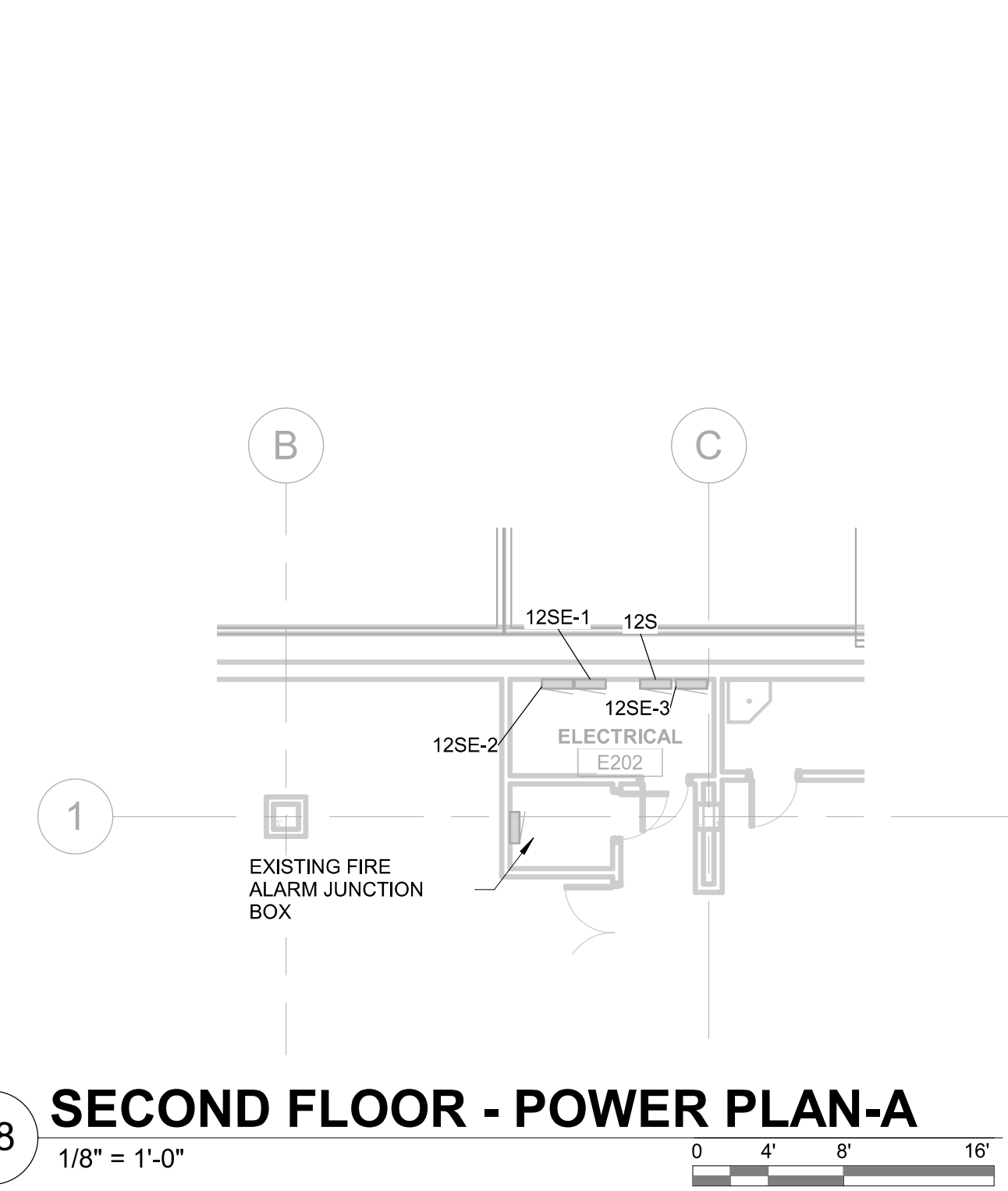
BUILDING NUMBER
1

DRAWING NUMBER
EP101-A

Engineering Service
VETERANS HEALTH CARE SYSTEM OF THE OZARKS
U.S. Department of Veterans Affairs



D4 FIRST FLOOR - POWER PLAN-A
1/8" = 1'-0"



B8 SECOND FLOOR - POWER PLAN-A
1/8" = 1'-0"

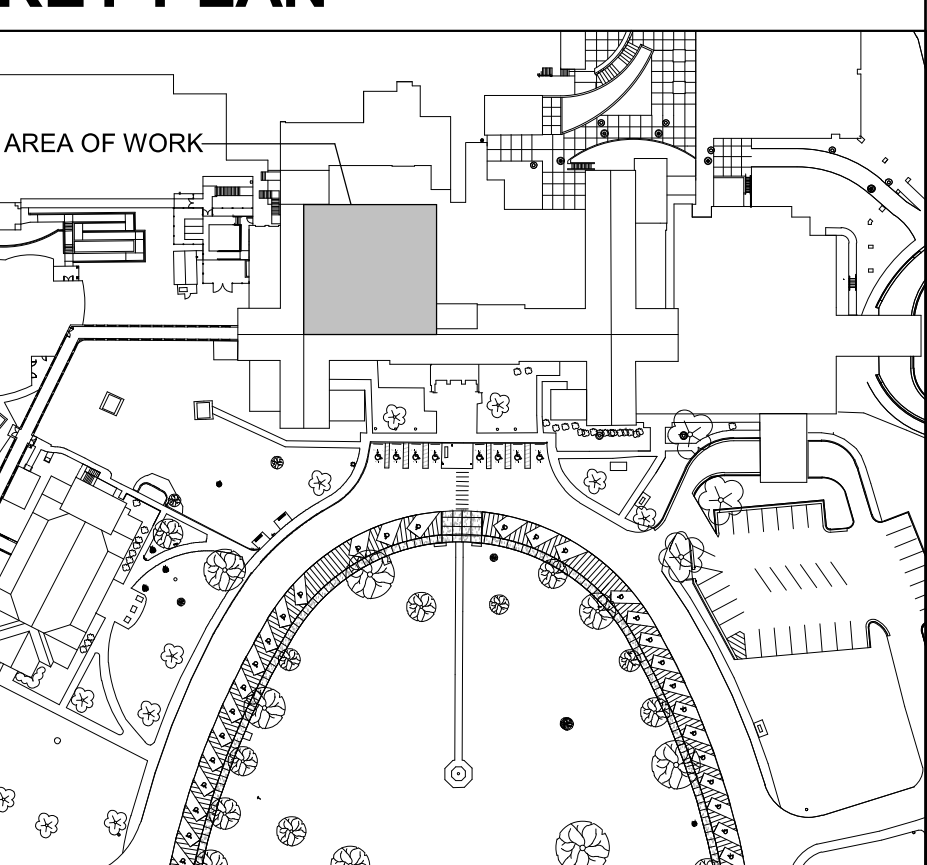
- GENERAL POWER NOTES**
- REFER TO DRAWING EG001-A FOR TYPICAL SYMBOLS AND ABBREVIATIONS USED IN THIS DRAWING.
 - CONFIRM RECEPTACLE LOCATIONS AND MOUNTING HEIGHTS WITH ARCHITECTURAL INTERIOR ELEVATIONS PRIOR TO ROUGH-IN.
 - ALL RECEPTACLES WITHIN 6'-0" OF SNK SHALL BE OF THE GFCI TYPE.
 - REVIEW THE CONSTRUCTION DOCUMENTS OF ALL TRADES FOR PHASING REQUIREMENTS.

- SHEET KEYNOTES**
- EXISTING TO REMAIN
 - DISABLE ELEVATOR GAS DOORS FROM OPENING ON THE FIRST FLOOR, TO BE REMOVED IN BID DEDUCT 4.
 - CONNECT TO LOCAL VAV POWER CIRCUIT.

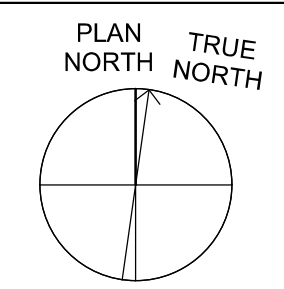
PARTITION GRAPHICS

- NO RATING
- SMOKE RESISTIVE PARTITION - NON RATED
- 1 HOUR FIRE BARRIER
- 1 HOUR FIRE/SMOKE BARRIER
- 2 HOUR FIRE BARRIER
- 2 HOUR FIRE/SMOKE BARRIER

KEY PLAN



NORTH LEGEND



FIRST FLOOR - FFE: 0'-0"