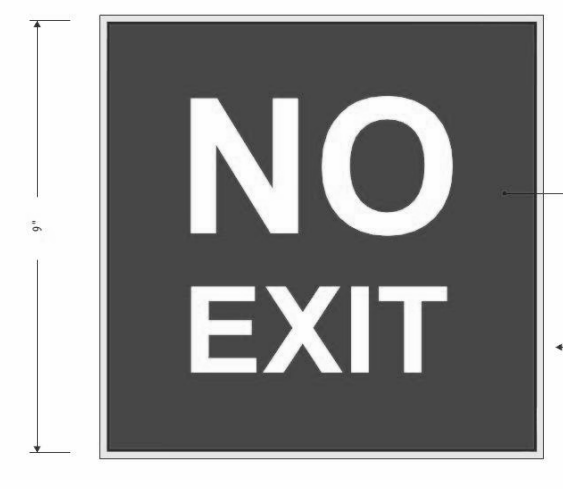
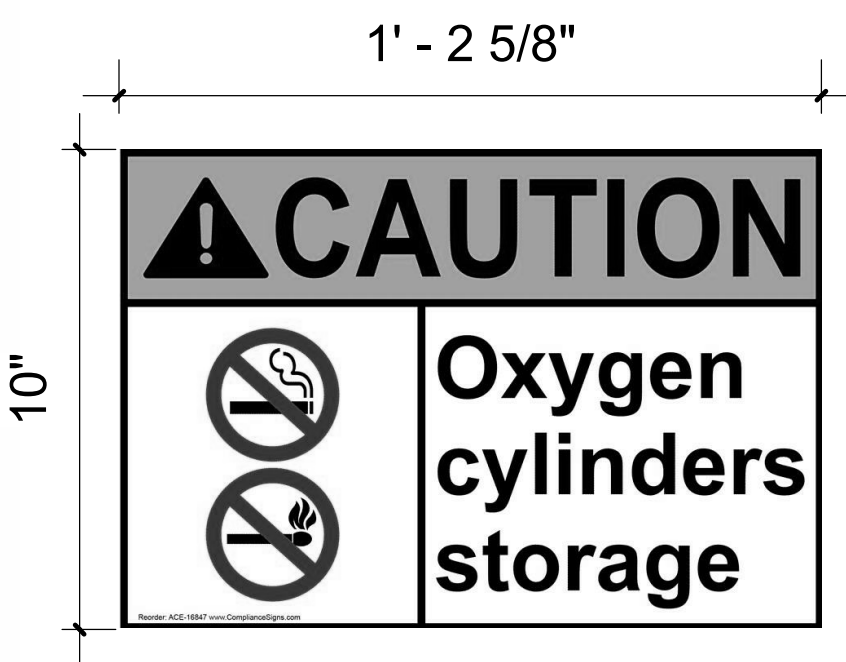
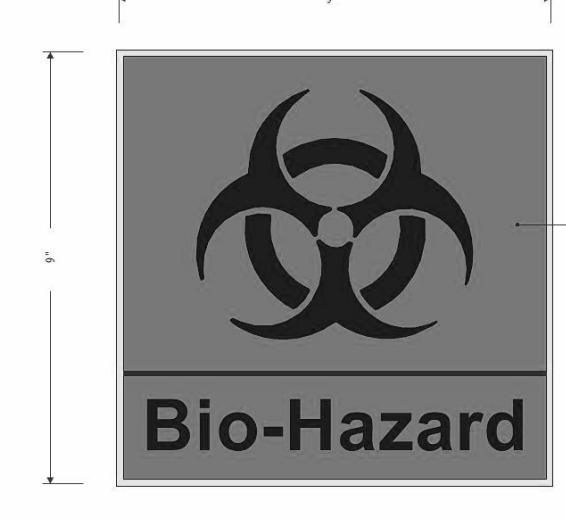
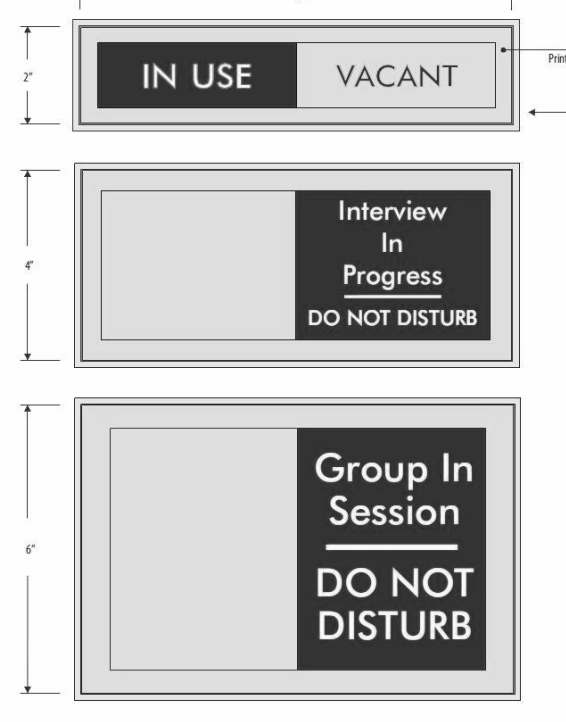
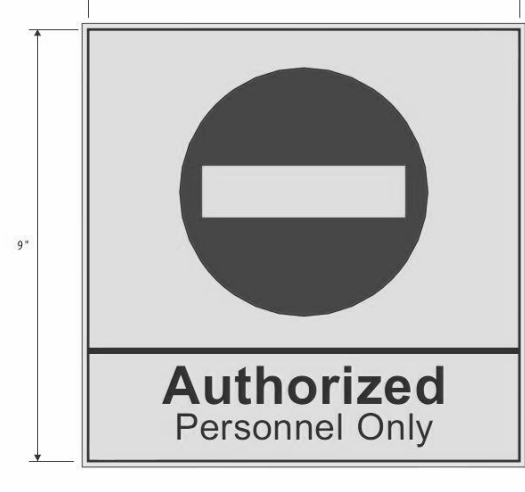
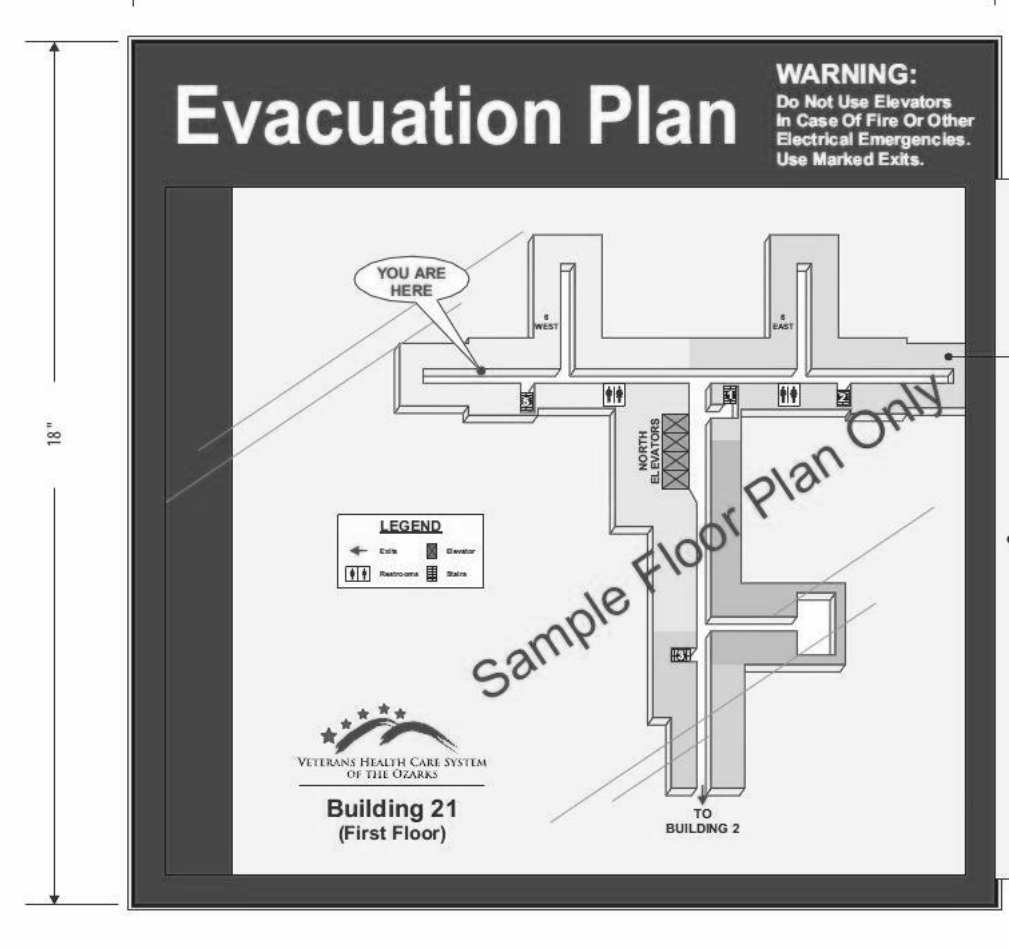


- SIGNAGE ELEVATION GRAPHICS ILLUSTRATE FAYETTEVILLE AR VHSO CAMPUS SIGNAGE STANDARDS AND ARE SHOWN FOR INFORMATION AND GENERAL CONFIGURATION PURPOSES. REFER TO LATEST EDITION OF FAYETTEVILLE AR VHSO CAMPUS SIGNAGE SIGNAGE DESIGN GUIDE FOR EXACT DIMENSIONS AND TYPOGRAPHY REQUIREMENTS BEFORE SUBMISSION OF SIGNAGE PACKAGE.
- NOT ALL SIGN TYPES SHOWN ARE USED ON PROJECT.
- A SIGN TYPE 'A' IS REQUIRED AT EACH INTERIOR DOOR OR CASED OPENING UN. REFER TO SIGN SCHEDULE FOR SIGNAGE TYPE AND WORDING REQUIRED AT SCHEDULED OPENINGS.
- PROVIDE A TYPE FLAG AND 'T' SIGNS AT EACH FIRE EXTINGUISHER AND/OR AED CABINET LOCATION.
- PROVIDE A TYPE FLAG AND 'E' SIGN AT EACH TOILET ROOM ACCESSIBLE FROM A CORRIDOR.
- REFER TO INTERIORS PLANS FOR SIGNAGE NOT AT OPENINGS SUCH AS DIRECTORIES.
- CONTRACTOR MUST CONFORM SIGNAGE TO VA STATION'S INTERIOR DESIGN STANDARDS.
- ALL TRIM IS BRUSHED ALUMINUM.



CREATIVE SIGNS MODEL NUMBER

V/W Q/W O/W CREATIVE SIGNS MODEL NUMBER

DRAWING KEY

N M L K

CAUTION OXIDIZING GASES STORED WITHIN NO SMOKING

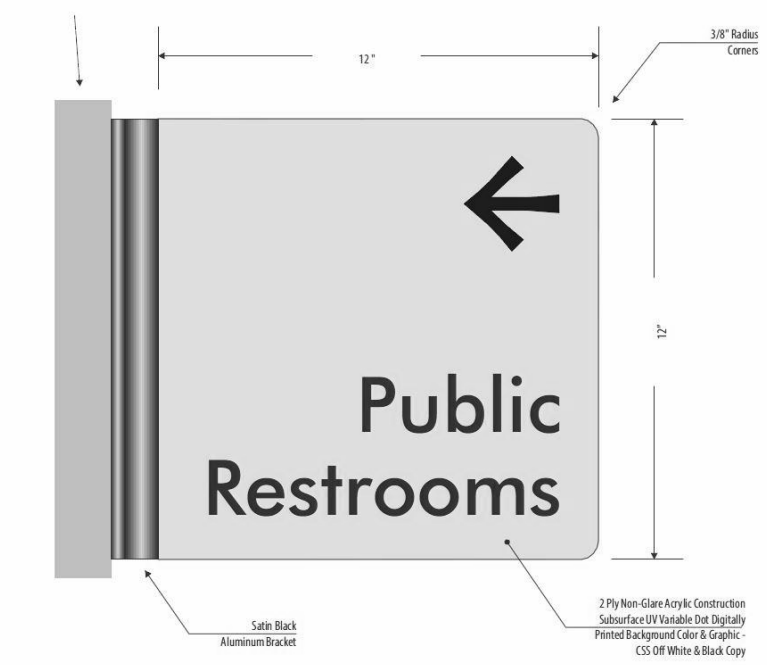
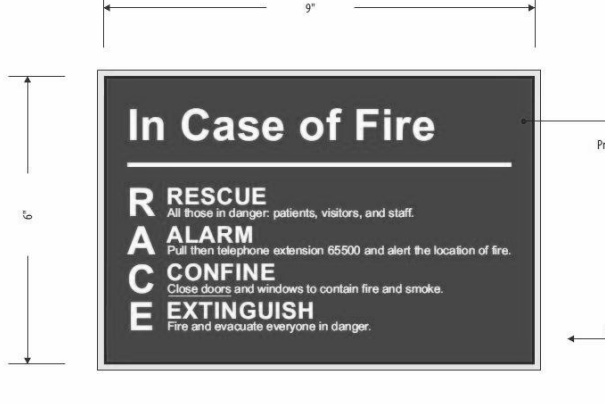
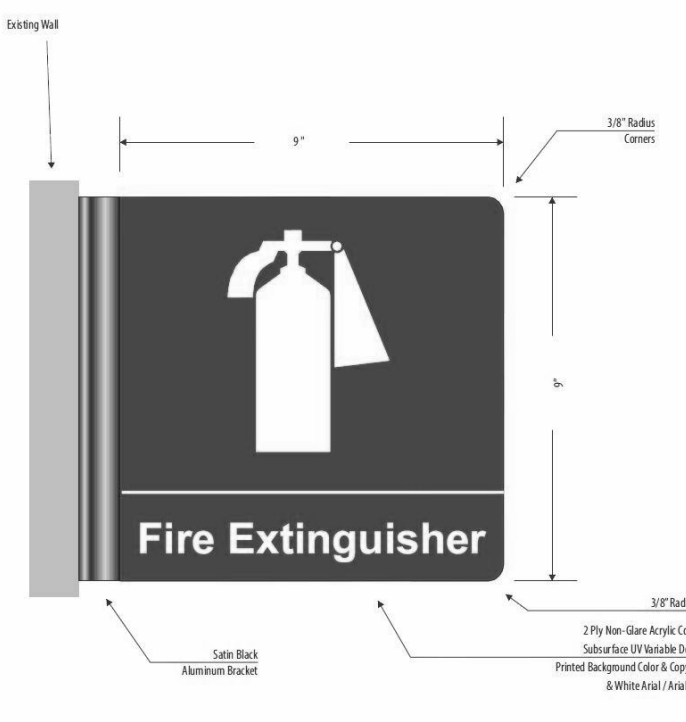
NFPA 99 11.3.4.1 CMS K923

PER NFPA 80 2019 SECTION 4.1.4.1. MAX. AGGREGATE ALLOWABLE SIGNAGE (FIRE DOOR) CANNOT EXCEED 5% TYPICAL DOOR LEAF 3' x 7' = 36" x 84" = 3,024 SQ. IN. MAX. ALLOWED SIGN = 3,024 x .05 = 151.2 SQ. IN. AREA OF SIGN ABOVE = 10' x 14' = 140 SQ. IN. < 151.2

CREATIVE SIGNS MODEL NUMBER

J P

VA SIGN NUMBER IN-13 B.O. SIGN 7'-0" AFF

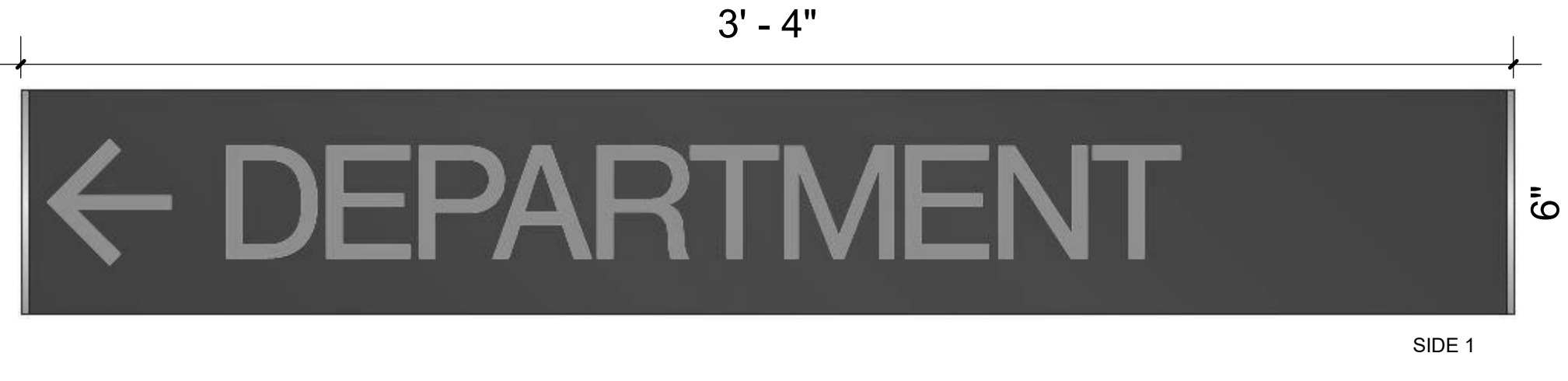
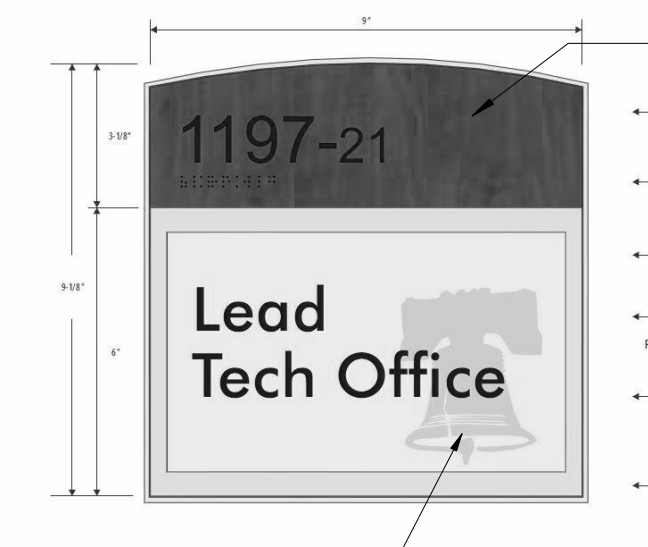
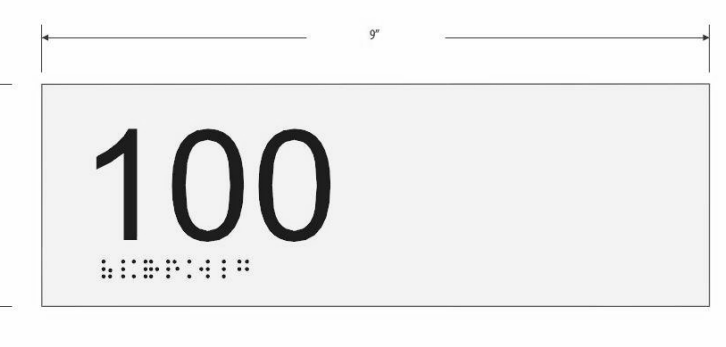
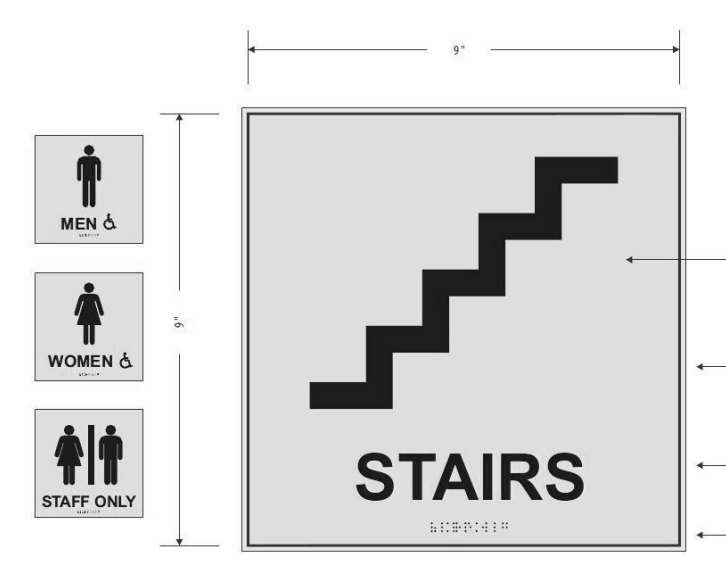


CREATIVE SIGNS MODEL NUMBER

G D/F RIGHT ANGLE CREATIVE SIGNS MODEL NUMBER E/W - RACE SIGN V4/W G D/F RIGHT ANGLE cD1A/W

DRAWING KEY

I H G F E D



CREATIVE SIGNS MODEL NUMBER

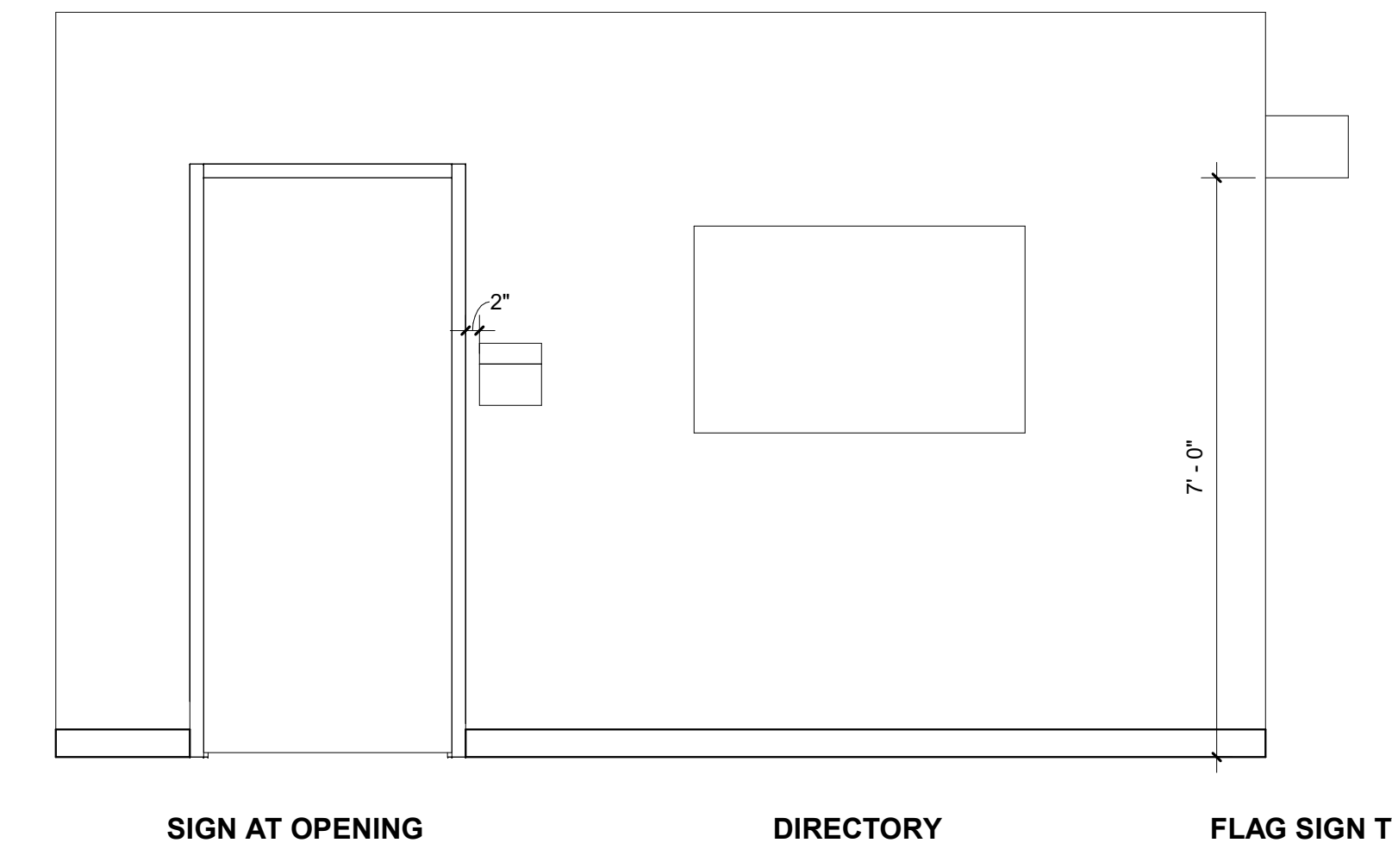
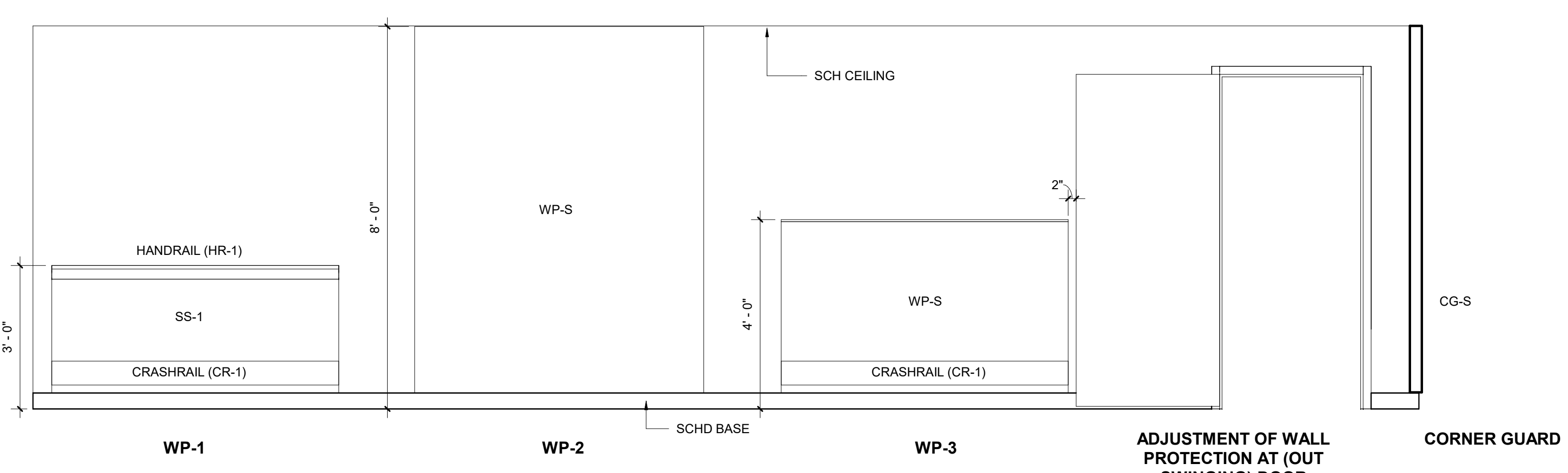
SAW D1A-P cD1A/F/W CEILING DIRECTIONAL SIGN

DRAWING KEY

C B A D6

E1 TYPICAL INTERIOR SIGNAGE

3" = 1'-0"

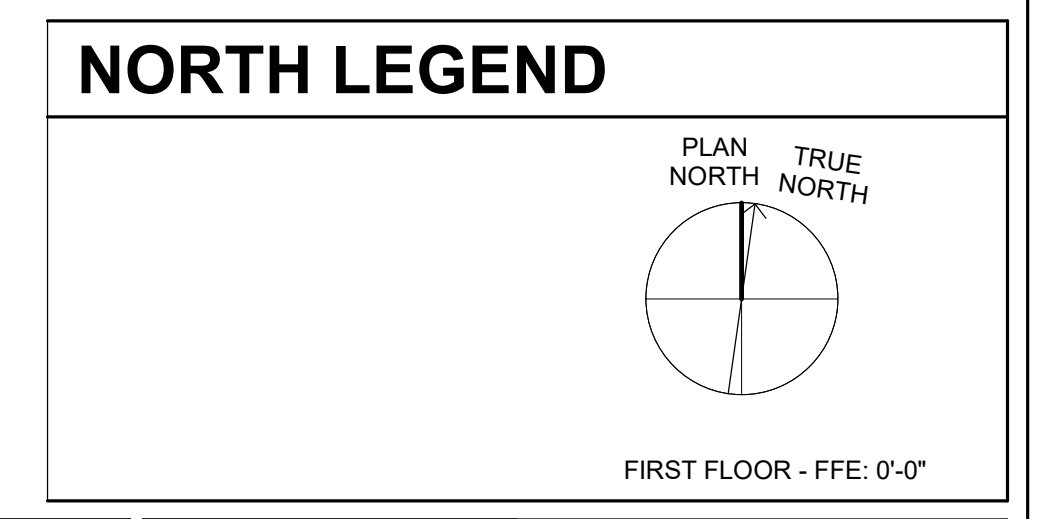


F1 WALL PROTECTION TYPES

1/2" = 1'-0"

F4 SIGNAGE MOUNTING LEGEND

1/2" = 1'-0"



CONSULTANTS CONSULTING STRUCTURAL ENGINEERS 		ARCHITECT/ENGINEER OF RECORD A/E: HARRELL DESIGN GROUP PC 10720 SIKES PLACE, SUITE 100 CHARLOTTE, NC 28277 704-814-1346 POC: LEE HARRELL PE, LEED AP, QCCP PRESIDENT HDG PROJECT: 19022 		STAMP 	DRAWING TITLE WALL PROTECTION/SIGNAGE TYPES APPROVED 	PHASE CONSTRUCTION DOCUMENTS SUBMISSION FULLY SPRINKLERED	PROJECT TITLE RENOVATE SPACE FOR LOGISTICS (B-1) LOCATION FAYETTEVILLE VA MEDICAL CENTER ISSUE DATE 11 APRIL 2024 CHECKED Checker DRAWN Author	PROJECT NUMBER 564-24-104 BUILDING NUMBER 1 DRAWING NUMBER AF604-A	Engineering Service 	U.S. Department of Veterans Affairs
---	--	--	--	------------------	--	---	--	--	--------------------------------	--

4/12/2024 11:19:52 AM
BIM 360://19022 - Fayetteville, IDIQ Project No. 664-19-003 Renovation of SPS/19022 - ARCH - R2020.rvt