

GENERAL SHEET NOTES

- A. CEILING HEIGHTS TO BE 8'-0" UN.
- B. DIMENSIONS ARE TO FINISH FACE OF WALL OR SOFFIT UN.
- C. RATED WALLS: ARE INDICATED IN PLAN AND REFLECTED CEILING PLAN WITH GRAPHIC DENOTING HOURLY RATING AND/OR RESISTANT TO PASSAGE OF SMOKE. REFER TO PARTITION TAGS ON FLOOR PLANS AND PARTITION SCHEDULE SHEET FOR MORE INFORMATION.
- D. GYPSUM BOARD SOFFITS: HEIGHT AFF TO MATCH ADJACENT CEILING OR TOP OF CASEWORK UN ON REFLECTED CEILING PLAN.
- E. CEILING MATERIAL TRANSITIONS: FLUSH AND NON-FLUSH CONDITIONS: REFER TO STANDARD DETAILS.
- F. CEILING FINISHES/MATERIALS ARE NOTED ON FINISH SCHEDULE.
- G. ACOUSTIC TILE CEILINGS TO BE CENTERED IN BOTH DIRECTIONS IN ROOM TYP. UN OR DIMENSIONED OTHERWISE. IF DIMENSION IS PROVIDED IN ONE DIRECTION ONLY, ASSUME GRID IS CENTERED IN OTHER DIRECTION.
- H. CUT TILES SHALL BE NO SMALLER THAN 4 INCHES IN ANY DIRECTION. CEILING FINISHES/MATERIALS NOTED ON TYPICALS FINISH SCHEDULE.
- I. PLASTIC LAMINATE (PLAM) CLOSURE PANELS (IN LIEU OF GYPSUM BOARD SOFFITS) OVER CASEWORK - SEE INTERIOR ELEVATIONS.
- J. CENTER LIGHT FIXTURE AND OTHER CEILING DEVICES WITHIN ACOUSTIC TILE UN. IF ONLY DIMENSIONED IN ONE DIRECTION, ASSUME DEVICE IS CENTERED IN THE OTHER DIRECTION.
- K. DIMENSIONS TO CENTERLINE OF LIGHT FIXTURE UN.
- L. EXIT SIGNAGE/LIGHTING SHOWN ON ELECTRICAL LIGHTING DRAWINGS.
- M. ALL CORRIDOR HEADERS ARE 7'-8" AFF, UNLESS NOTED OTHERWISE.

SHEET KEYNOTES

- 09.13 PORTION OF ACOUSTICAL CEILING TILE SYSTEM TO BE COMPLETED AT CONCLUSION OF CONSTRUCTION PERIOD. ACOUSTICAL CEILING TILE SYSTEM LIGHTING AND CEILING DEVICES TO BE INSTALLED ONCE TEMPORARY CONSTRUCTION BARRIER HAS BEEN REMOVED.
- 09.17 INSTALL NEW WALL ACT WALL MOLDING ALONG NEW FURRING WALL. REUSE EXISTING TEES AND REPLACE REMOVED CEILING TILES WITH NEW.
- 09.19 PAINT STRUCTURE.

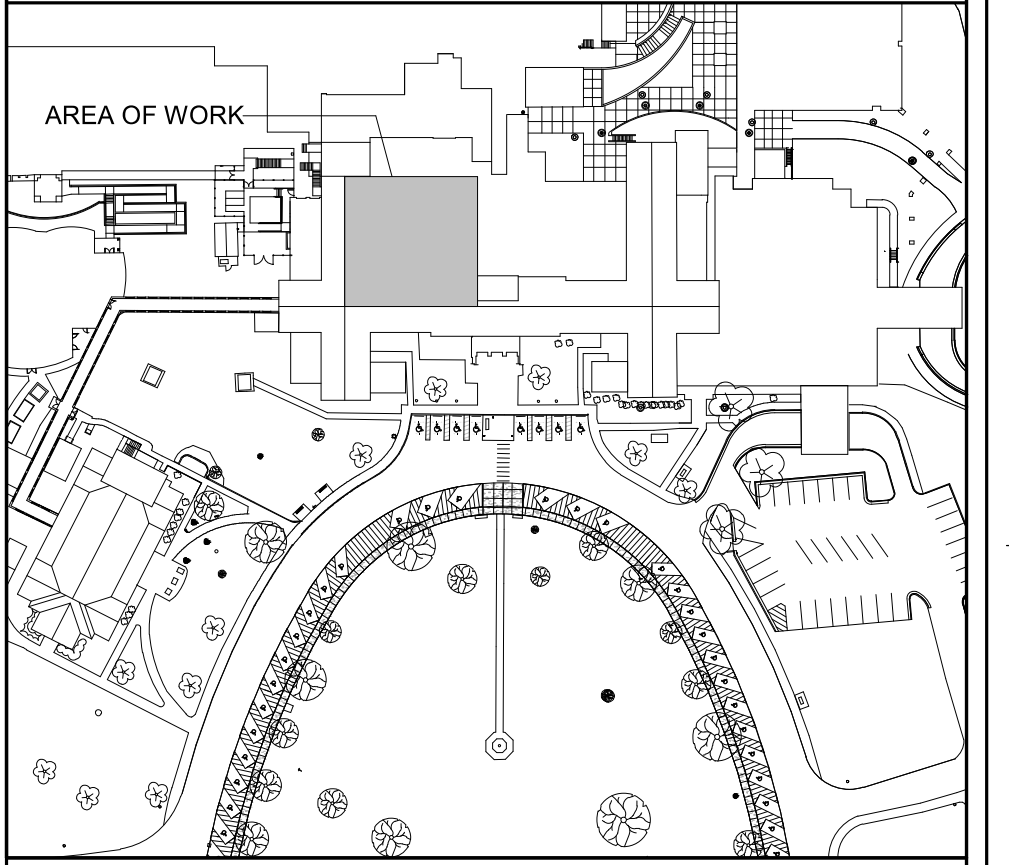
PARTITION LEGEND

- EXISTING PARTITION / BARRIER - WALL TO REMAIN
- EXISTING PARTITION / BARRIER - WALL TO BE REMOVED
- NEW PARTITION / BARRIER - WALL

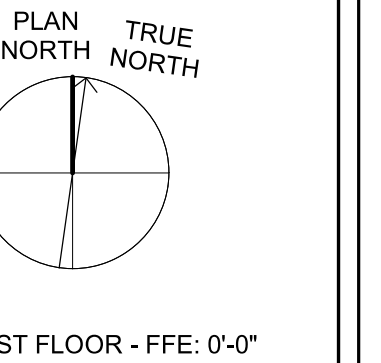
PARTITION GRAPHICS

- NO RATING
- SMOKE RESISTIVE PARTITION - NON RATED
- 1 HOUR FIRE BARRIER
- 1 HOUR FIRE/SMOKE BARRIER
- 2 HOUR FIRE BARRIER
- 2 HOUR FIRE/SMOKE BARRIER

KEY PLAN

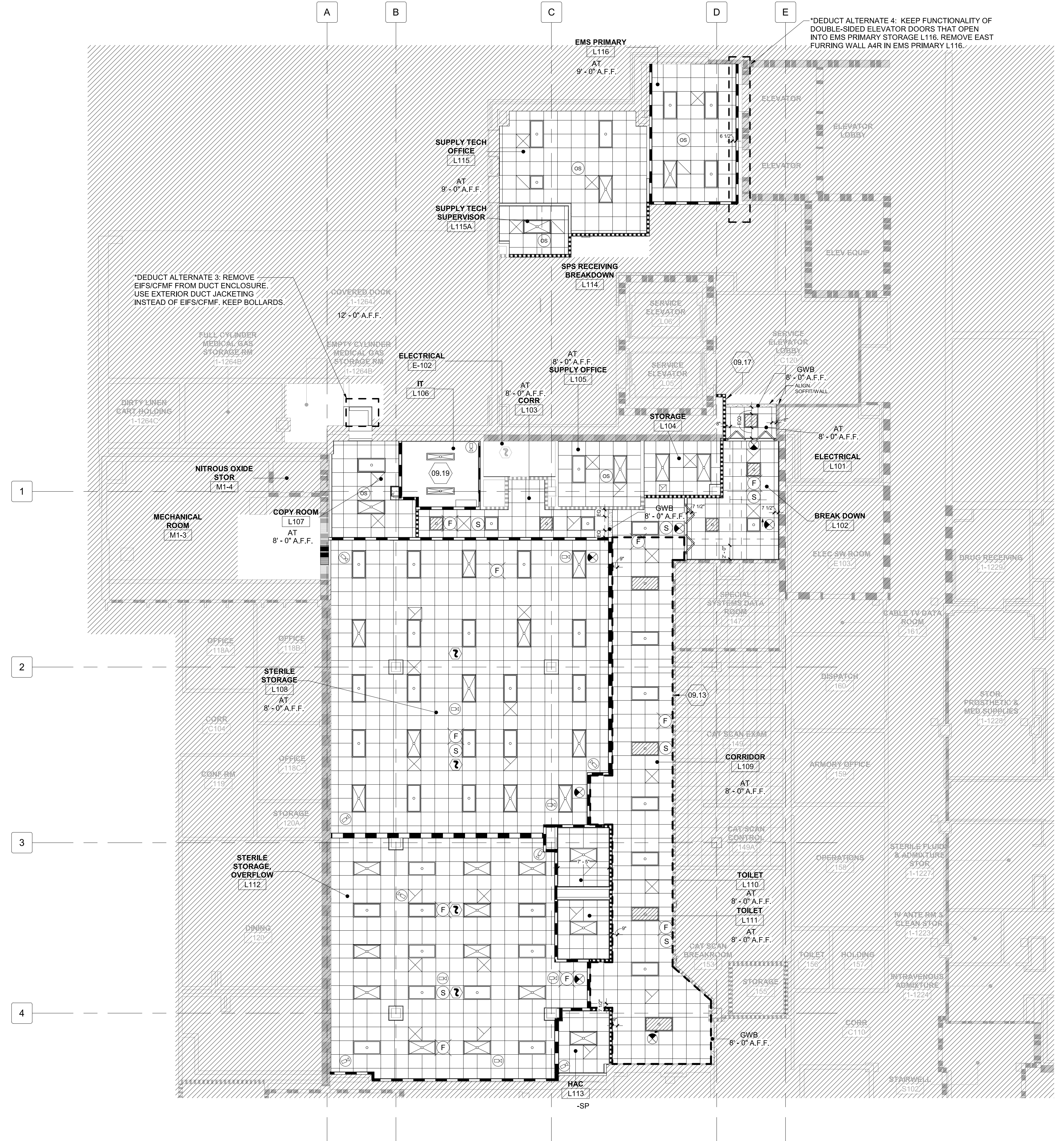


NORTH LEGEND

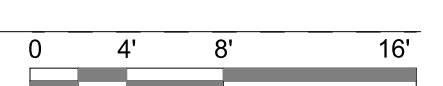


SYMBOLS - RCP

- 2' x 4' TROFFER LIGHT LIFE SAFETY
- 2' x 4' TROFFER LIGHT CRITICAL
- 2' x 4' TROFFER LIGHT
- 4' LINEAR PENDANT DIRECT/INDIRECT LED LIGHT FIXTURE
- OCCUPANCY SENSOR
- SPEAKER - COMMUNICATIONS
- CEILING MOUNTED - WIRELESS ACCESS POINT
- SUPPLY DIFFUSER
- EXHAUST GRILLE
- RETURN GRILLE
- CHASE SYMBOL
- CEILING EXIT SIGN - VARIOUS DIRECTIONAL AND NON-DIRECTIONAL CONFIGURATIONS
- CEILING MOUNTED COMBINATION FIRE ALARM SPEAKER/STROBE DEVICE
- CEILING MOUNTED FIRE ALARM SPEAKER DEVICE
- FIRE ALARM SMOKE DETECTOR
- FIRE ALARM HEAT DETECTOR
- FIRE ALARM SYSTEM CEILING MOUNTED SMOKE DETECTOR FOR ELEVATOR RECALL
- FIRE ALARM CONNECTION RELAY
- CEILING MOUNTED CAMERA
- EXPOSED TO STRUCTURE
- ACT CEILING SYSTEM
- GWB CEILING



F4 FIRST FLOOR - REFLECTED CEILING PLAN
1/8" = 1'-0"



CONSULTANTS CONSULTING STRUCTURAL ENGINEERS		ARCHITECT/ENGINEER OF RECORD A/E: HARRELL DESIGN GROUP PC 10720 SIKES PLACE, SUITE 100 CHARLOTTE, NC 28277 704-814-1346 POC: LEE HARRELL PE, LEED AP, QCAP PRESIDENT HDG PROJECT: 19022		STAMP [Professional Engineer Seal]		DRAWING TITLE FIRST FLOOR - REFLECTED CEILING PLAN		PHASE CONSTRUCTION DOCUMENTS SUBMISSION		PROJECT TITLE RENOVATE SPACE FOR LOGISTICS (B-1)		PROJECT NUMBER 564-24-104		Engineering Service VETERANS HEALTH CARE SYSTEM OF THE OZARKS U.S. Department of Veterans Affairs	
Revision Number Revisions:						APPROVED		FULLY SPRINKLERED		LOCATION FAYETTEVILLE VA MEDICAL CENTER		BUILDING NUMBER 1			
										ISSUE DATE 11 APRIL 2024		DRAWN GO/MS		DRAWING NUMBER AE111-A	