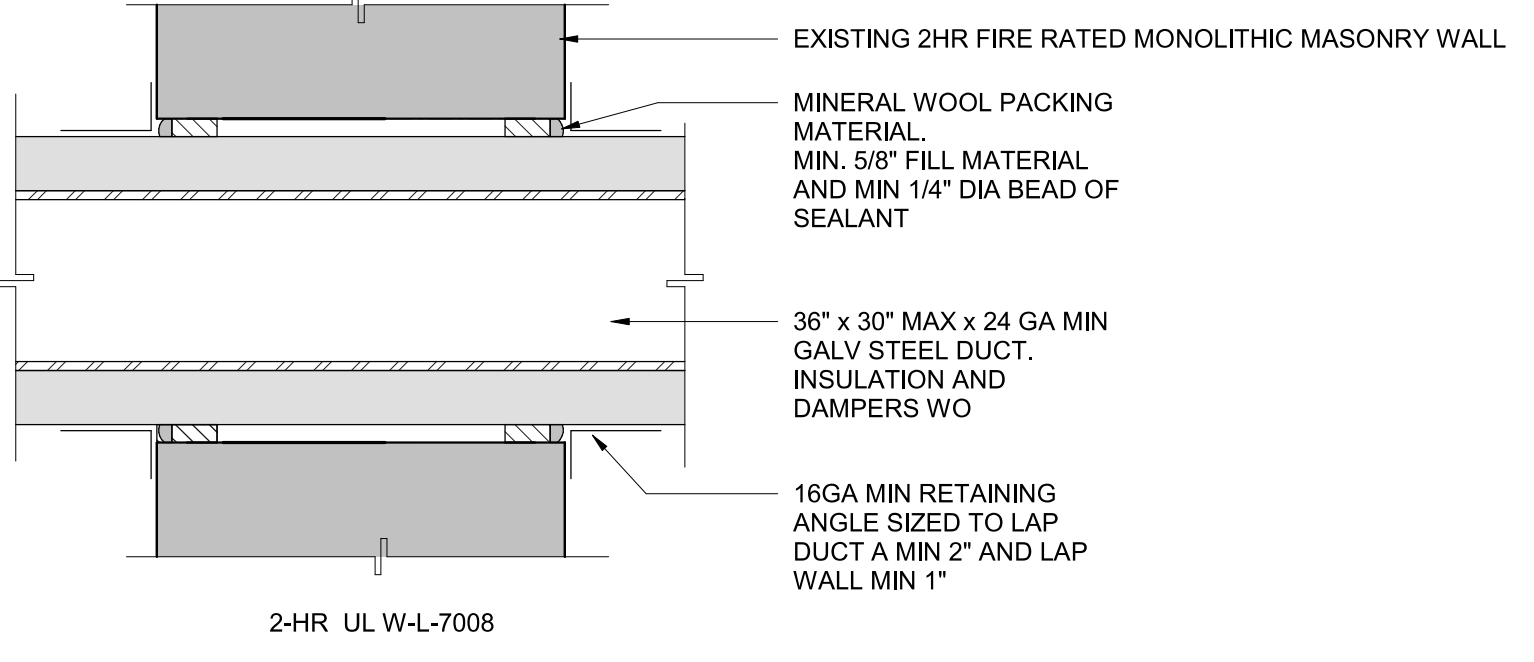


**SECTION -MECHANICAL PENETRATION THRU EXISTING EXTERIOR WALL**

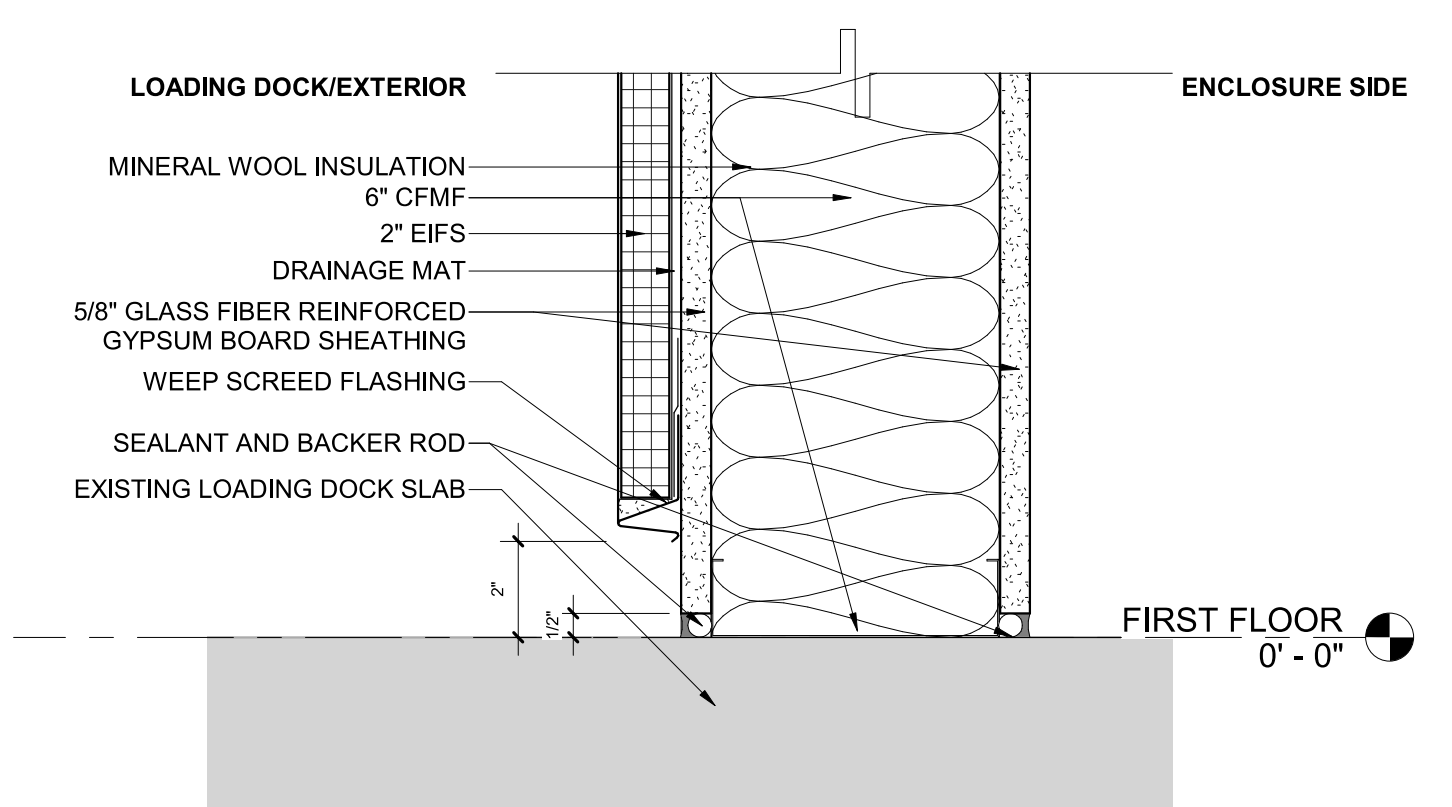
**A1** 3" = 1'-0"



**MECHANICAL PENETRATION THRU 2HR RATED EXTERIOR WALL**

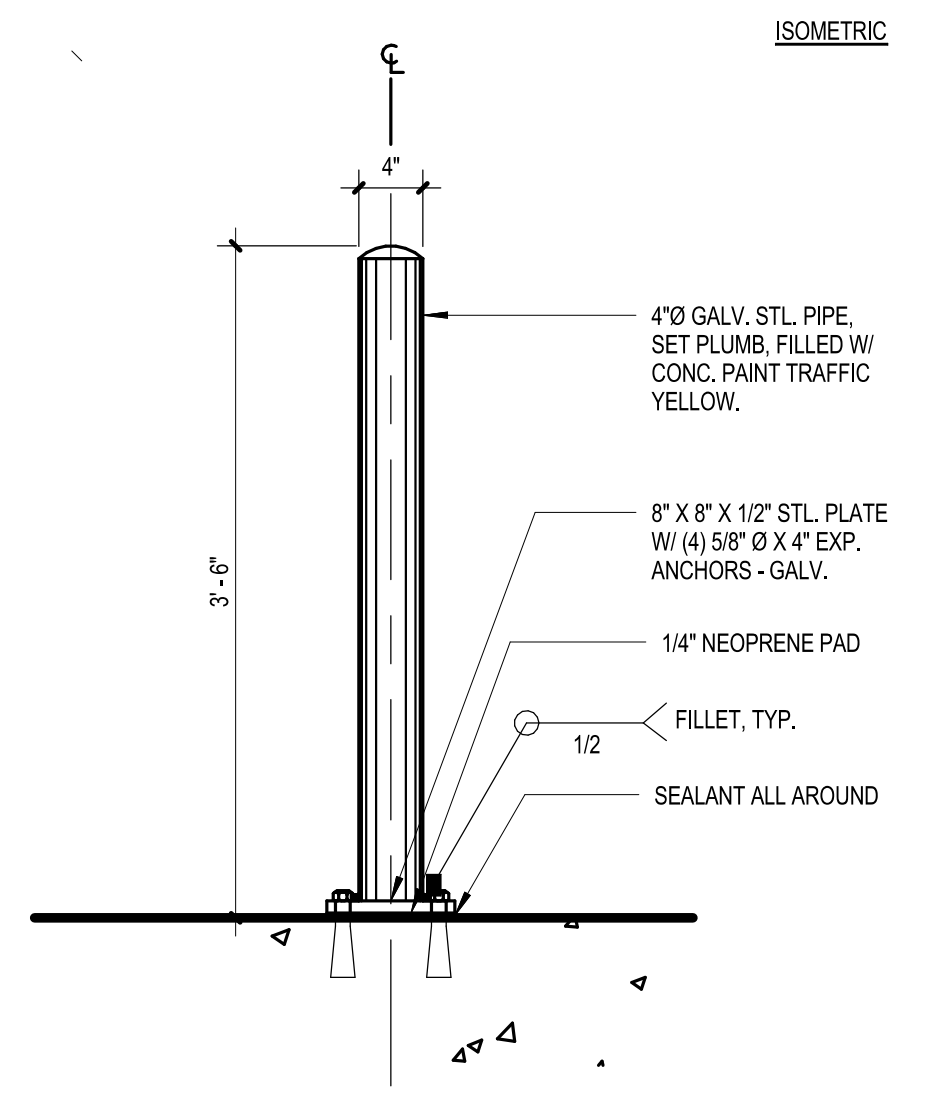
**C1** 3" = 1'-0"

BASIS OF DESIGN: STO THERM RAINSCREEN CLASS PB



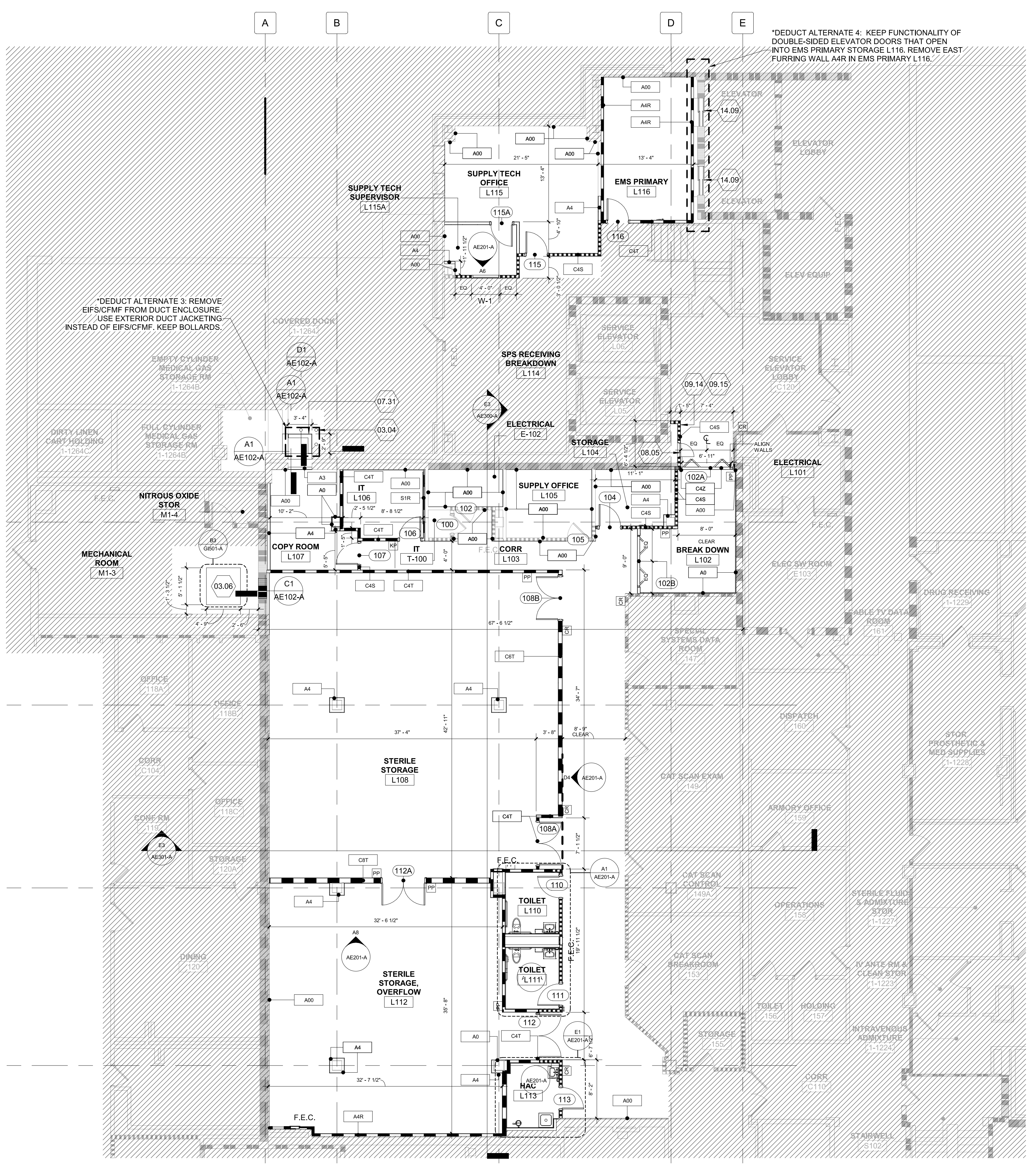
**CFMF EIFS DUCT ENCLOSURE**

**D1** 3" = 1'-0"



**EXTERIOR STEEL PIPE BOLLARD DETAIL**

**F1** 1" = 1'-0"



**FIRST FLOOR - CONSTRUCTION PLAN**

**F4** 1/8" = 1'-0"

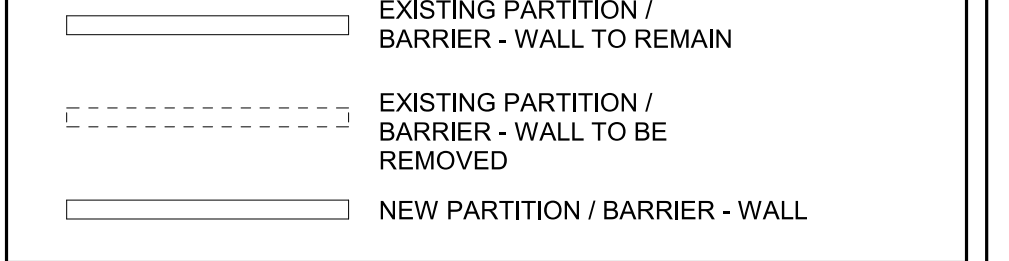
**GENERAL SHEET NOTES**

- A. REFER TO 0501-A FOR PARTITION TYPES AND AE511-A FOR HEAD OF WALL CONSTRUCTION.
B. REFER TO LIFE SAFETY DRAWINGS FOR PROJECT-WIDE LIFE SAFETY SCOPE OF RATED WALLS, BARRIERS, SMOKE RESISTANT PARTITIONS, SUITE DESIGNATIONS, EGRESS, AND EXIT DISCHARGE INFORMATION.
C. REFER TO 09101-A FOR EQUIPMENT NOT SHOWN ON THIS PLAN. DIMENSIONS ARE TO FINISH FACE OF WALL OR SOFFIT AND TO COLUMN CENTER LINE UNLESS OTHERWISE NOTED.
D. PROVIDE 3" GROMMETS @ 8" O.C. IN ALL COUNTERTOPS ABOVE OPEN KNEE SPACE. CENTER ON OUTLETS BELOW.
E. PARTITION TYPES, AS NOTED BY SYMBOL, CONTINUE BETWEEN ROOMSPACE CORNERS OR ANY INTERSECTING PARTITION. DIFFERING PARTITION TYPES SHALL ALIGN SO THAT WALL PLANES CONTINUE UNBROKEN WITHIN ACROSS ROOMS AND/OR SPACES.
G. REFER TO 0601-A FOR DOOR SCHEDULE.
H. DISTANCE FROM HINGE SIDE OF DOOR TO INTERSECTING STUD WALL SHALL BE 4" UNLESS NOTED OR DETAILED OTHERWISE (MEASURED FROM OUTSIDE OF FRAME.)
I. CONTRACTOR SHALL VERIFY ALL DIMENSIONS NOTED AS "CLR", "CLEAR" OR "MIN" DIMENSIONS NOTED AS "HOLD" ARE CRITICAL TO COORDINATE OTHER WORK (E.G. CEILING GRIDS, LIGHTING, FINISHES, ETC.)
K. CONTRACTOR SHALL VERIFY ALL DIMENSIONS PRIOR TO INITIATING CONSTRUCTION. ANY DISCREPANCIES SHALL BE REPORTED TO ARCHITECT PRIOR TO COMMENCING WORK.
L. CONTRACTOR SHALL PROVIDE ALL BLOCKING REQUIRED TO ANCHOR ALL WALL AND CEILING MOUNTED ITEMS.
M. FIRE STOPPING SYSTEMS - REFER TO SPECIFICATIONS SECTION 07 84 00 FOR INFORMATION REGARDING PENETRATIONS OF ALL RATED ASSEMBLIES (BOTH SINGLE AND DOUBLE MEMBRANE PENETRATIONS), INCLUDING BUT NOT LIMITED TO: PENETRATIONS FROM DUCTWORK, CONDUIT, PIPING, SUPPORT FOR WALL MOUNTED EQUIPMENT, CABINETS, AND COUNTERTOPS.
N. ALL PARTITIONS TO BE TYPE C4 UNLESS OTHERWISE NOTED.

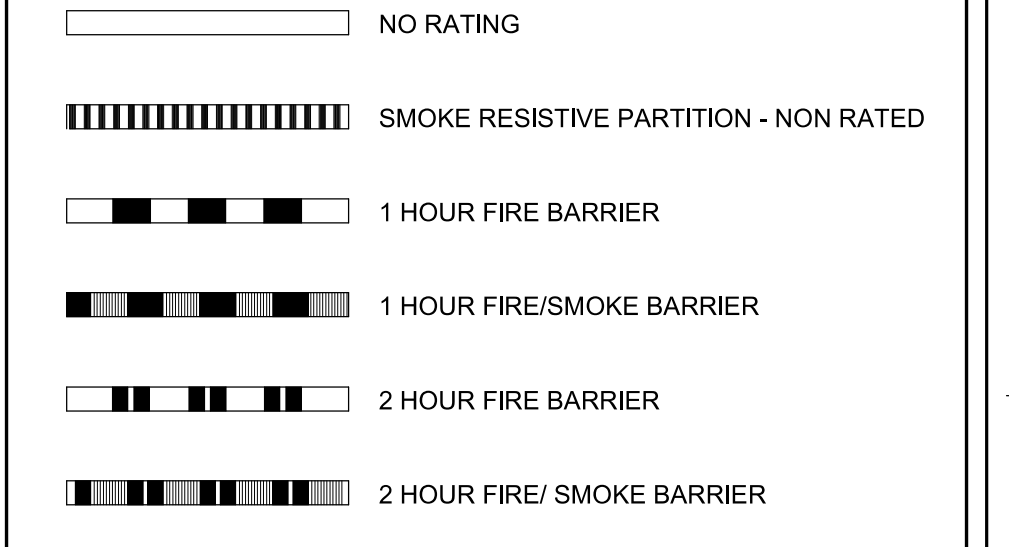
**SHEET KEYNOTES**

- 03.04 CONCRETE BOLLARD (TYP.) SEE DETAIL F1/AE102-A.
03.06 PAD DIMENSIONS ARE FOR BASIS OF DESIGN UNIT. CONTRACTOR MUST ALTER PAD DIMENSIONS PER B3/B5/B11-A TO CONFORM TO APPROVED UNIT.
07.31 1" THICK RIGID INSULATION WITH EIFS OVER 5/8" GYPSUM BOARD SHEATHING AND 6" CFMF.
08.05 24" x 24" ACCESS PANEL.
09.14 PAINT NEW FURRING WALLS TO MATCH EXISTING.
09.15 INSTALL NEW STAINLESS STEEL WALL PROTECTION AT 48 INCHES AFF ON NEW FURRING WALLS.
14.09 DEACTIVATE ELEVATOR DOORS, DISCONNECT BUTTON OPERATION AND DOME LIGHT AT THE ELEVATOR CONTROLLER. REMOVE WALL DEVICES.

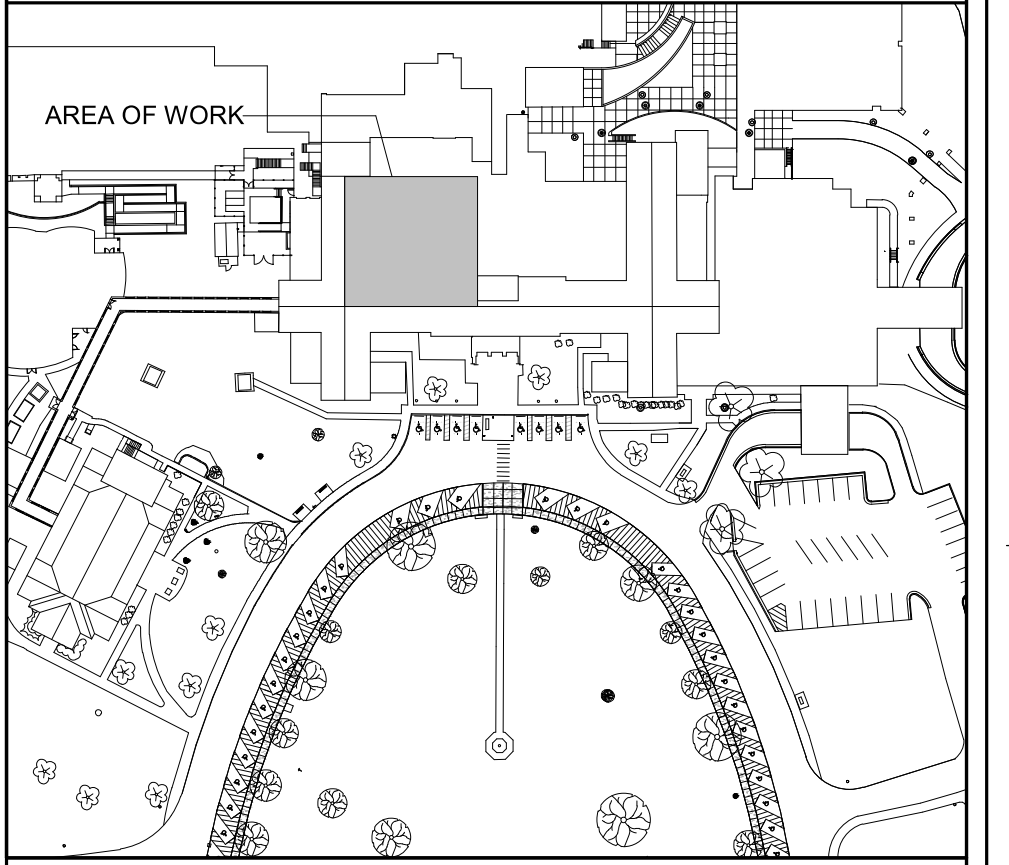
**PARTITION LEGEND**



**PARTITION GRAPHICS**



**KEY PLAN**



**NORTH LEGEND**

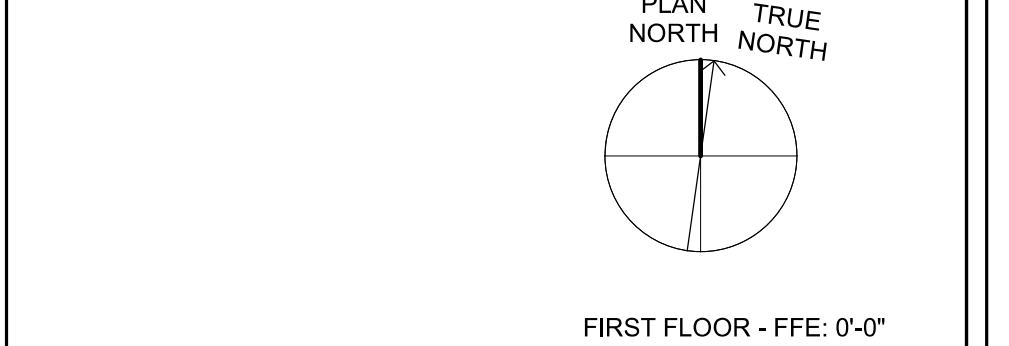


Table with project information including CONSULTANTS (Consulting Structural Engineers), ARCHITECT/ENGINEER OF RECORD (Harrell Design Group PC), DRAWING TITLE (FIRST FLOOR - CONSTRUCTION PLAN), PHASE (CONSTRUCTION DOCUMENTS SUBMISSION), PROJECT TITLE (RENOVATE SPACE FOR LOGISTICS (B-1)), PROJECT NUMBER (564-24-104), BUILDING NUMBER (1), DRAWING NUMBER (AE102-A), and location (FAYETTEVILLE VA MEDICAL CENTER).

4/12/2024 11:19:00 AM
BIM 360://19022 - Fayetteville, IDI Project No. 564-19-103 Renovation of SPS/19022 - ARCH - R2020.rvt
VA FORM 08 - 6231