



**Hight Jackson**  
ASSOCIATES  
5201 W Village Parkway, Suite 300 | Rogers, Arkansas 72768 | (479) 464-4965 | www.hjarch.com

**AN INTERIOR REMODEL FOR  
RPS IT DEPARTMENT**  
715 W EASY ST., ROGERS, AR 72756

DRAWN BY:  
**DCN**  
CHECK BY:  
**NEW**  
ISSUE DATE  
**02/17/2025**

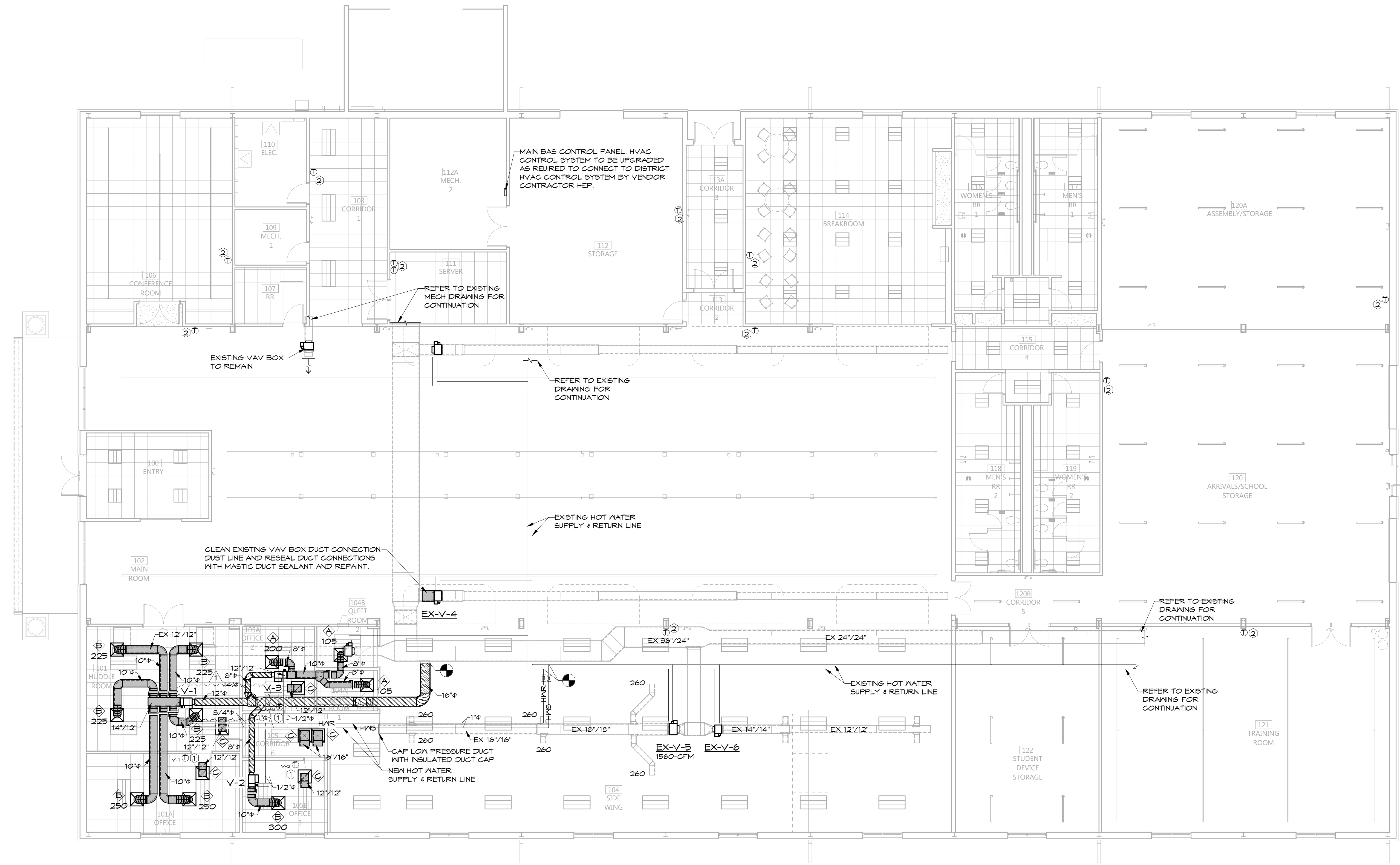
PROJECT NO.  
**2441**

REVISION DATES  
03/10/2025  
03/21/2025

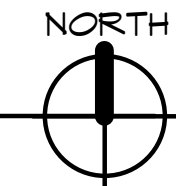
HVAC PLAN  
SHEET  
**M2.1**

COPYRIGHT 2025  
THESE DRAWINGS AND SPECIFICATIONS ARE  
THE EXCLUSIVE PROPERTY OF  
HIGHT JACKSON ASSOCIATES P.A.  
USE OR REPRODUCTION IS PROHIBITED  
WITHOUT WRITTEN CONSENT

HSA JOB # 24-105



**1** HVAC PLAN  
1/8" = 1'-0"



NOTES:  
REFER TO SHEET M1.1 FOR HVAC LEGEND, GENERAL KEYED NOTES  
AND SCHEDULES, REFER TO SHEET M2.0 FOR HVAC DEMO PLAN.  
REFER TO SHEET M3.1 FOR HVAC DETAILS.

**HSA** HSAEngineering  
479 / 452 / 8922 office  
7405 Ellis St.  
Fort Smith, AR 72916  
HSAConsultants.com