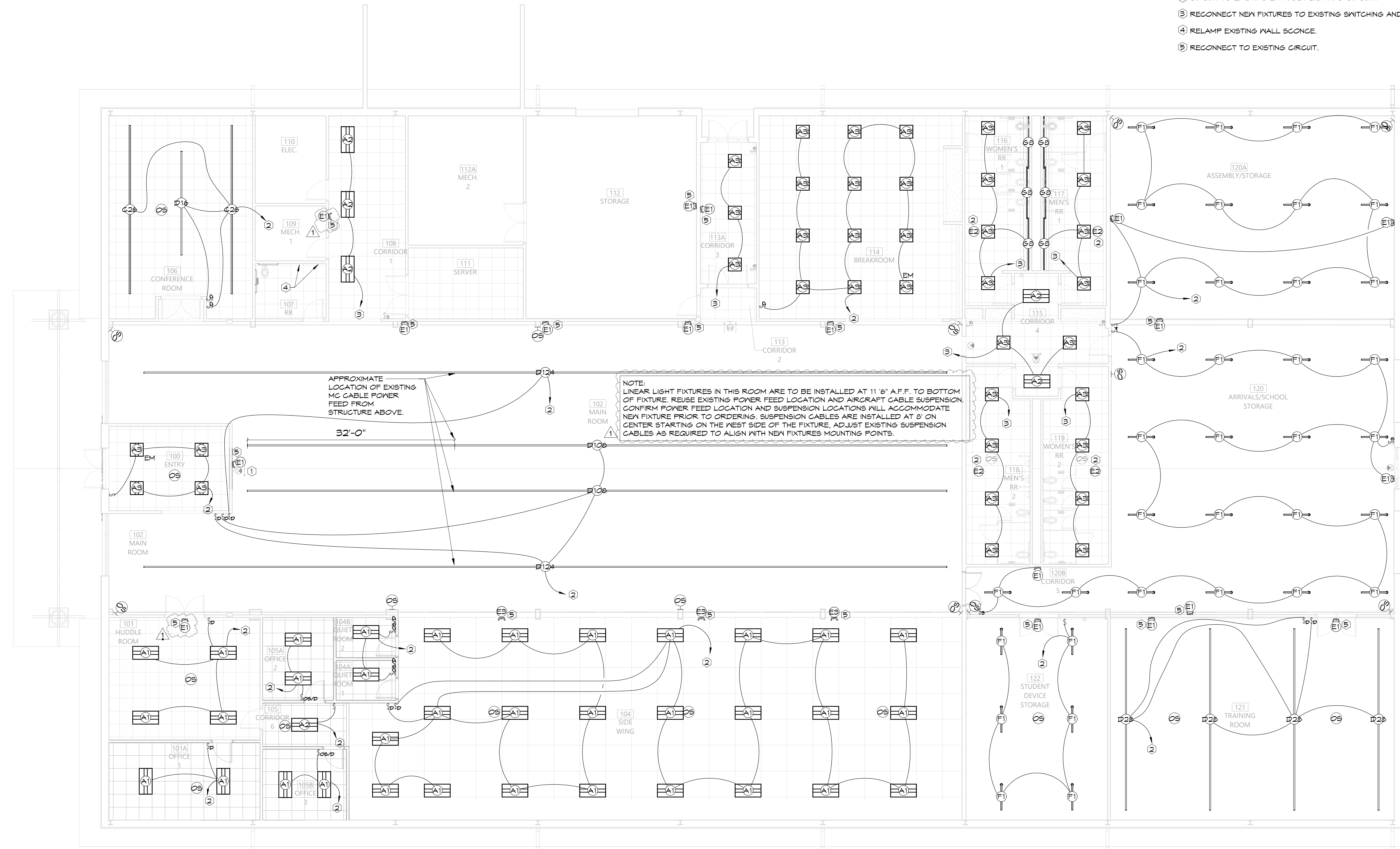


### GENERAL LIGHTING NOTES

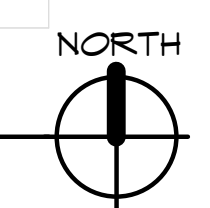
1. AT EXISTING CEILINGS, REPLACE LIGHTS WITH NEW FIXTURES INSTALLED IN PLACE UNLESS OTHERWISE NOTED.

### KEYED LIGHTING NOTES

- 1 REMOVE PLASTIC FROM EXISTING EXIT LIGHT TO SHOW INDICATOR ARROW.
- 2 CIRCUIT TO EXISTING 277 VOLT LIGHTING CIRCUIT.
- 3 RECONNECT NEW FIXTURES TO EXISTING SWITCHING AND CIRCUIT.
- 4 RELAMP EXISTING WALL SCONCE.
- 5 RECONNECT TO EXISTING CIRCUIT.



**1 LIGHTING PLAN**  
1/8" = 1'-0"



**Hight Jackson**  
ASSOCIATES  
5201 W Village Parkway, Suite 3001 Rogers, Arkansas 72768 | (479) 464-4965 | www.hjarch.com

AN INTERIOR REMODEL FOR  
**RPS IT DEPARTMENT**  
715 W EASY ST., ROGERS, AR 72756

DRAWN BY: HA  
CHECK BY: MTR  
ISSUE DATE: 02/17/2025

PROJECT NO: 2441  
REVISION DATES: 03/10/2025, 03/18/2025

LIGHTING PLAN  
SHEET  
**E2.1**

**HSA** Engineering  
479 / 452 / 8922 office  
7405 Ellis St.  
Fort Smith, AR 72916  
HSAConsultants.com

COPYRIGHT 2025  
THESE DRAWINGS AND SPECIFICATIONS ARE THE EXCLUSIVE PROPERTY OF HIGHT JACKSON ASSOCIATES P.A. USE OR REPRODUCTION IS PROHIBITED WITHOUT WRITTEN CONSENT.

HSA JOB # 24-105