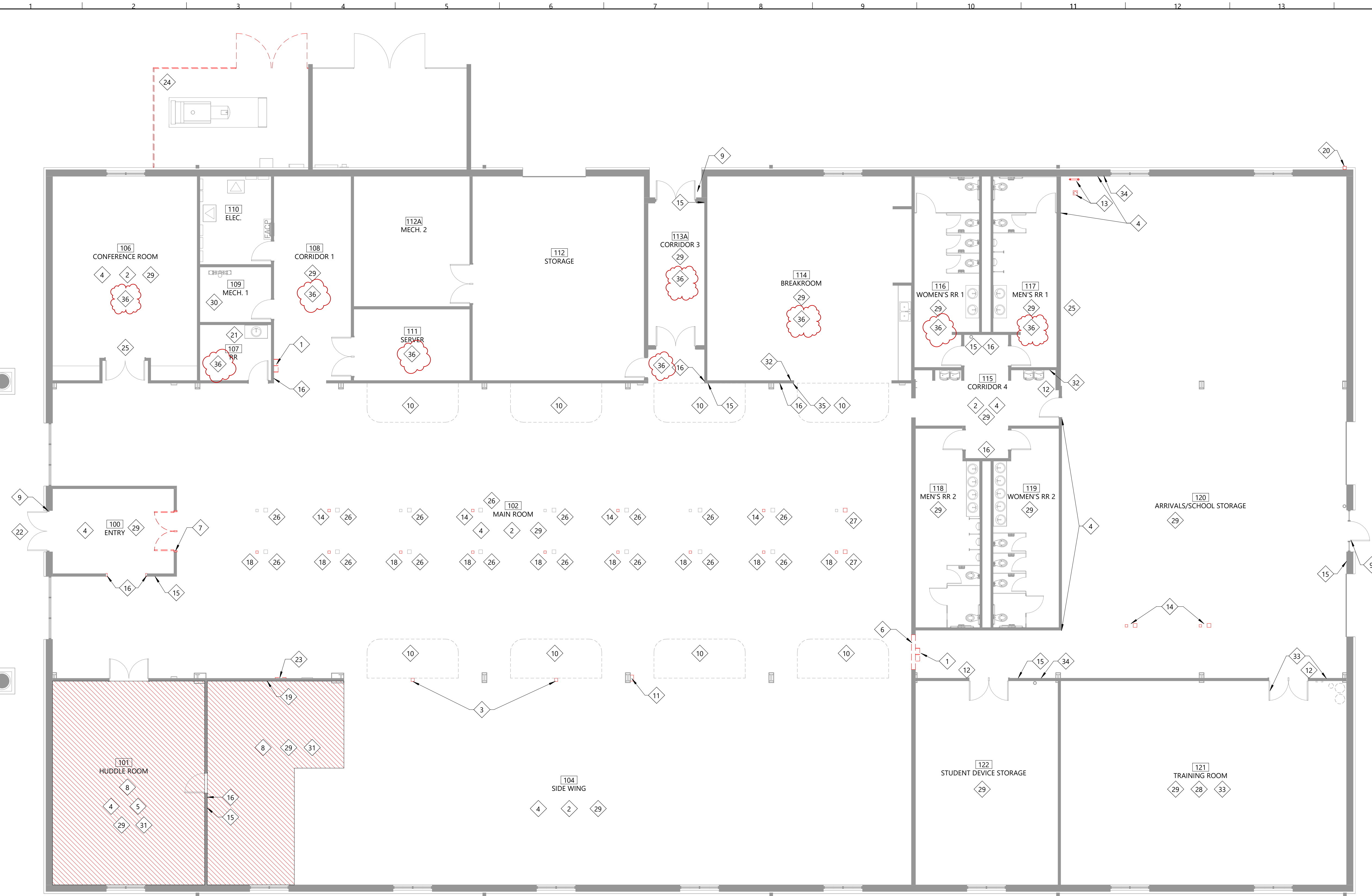


**General Demolition Notes**

- DEMOLITION NOTES ARE PROVIDED TO EXPLAIN THE ITEMS TO BE REMOVED, RELOCATED, AND/OR MODIFIED IN ORDER TO FACILITATE THE REMODEL AND NEW CONSTRUCTION. IT SHALL BE THE RESPONSIBILITY OF THE GENERAL CONTRACTOR TO PROVIDE DEMOLITION AND PATCH ITEMS, SURFACES AND AREAS AS REQUIRED TO PROVIDE NEW WORK OR TO INSTALL NEW ITEMS WHERE CALLED FOR ON THE DRAWINGS AND SPECIFICATION.
- PRIOR TO DEMOLITION AND CONSTRUCTION, IT IS THE CONTRACTOR'S RESPONSIBILITY TO FIELD VERIFY THE LOCATION AND CONDITION OF ALL EXISTING UTILITIES AND ELECTRICAL ITEMS (EXTERIOR AND INTERIOR) ON THE SITE AND WITHIN THE EXISTING BUILDING(S).
- CONTRACTOR TO COORDINATE WITH OWNER THE REMOVAL OF ALL ITEMS OWNER WISHES TO SALVAGE FROM EXISTING REMODEL AREAS PRIOR TO THE START OF CONSTRUCTION.
- CONTRACTOR TO VERIFY ALL UTILITY CONDITIONS. REMOVAL AND REPLACEMENT OF ANY UTILITY LINE OR CONDUIT REQUIRED TO INSTALL NEW WORK TO BE INCLUDED AS PART OF THIS BID.
- PROTECT ALL PLUMBING, MECHANICAL, ELECTRICAL, DATA EQUIPMENT, AND OTHER ITEMS NOTED OR INDICATED TO REMAIN. REFER TO PLUMBING, MECHANICAL, AND ELECTRICAL DRAWINGS FOR ADDITIONAL NOTES. IT IS THE CONTRACTOR'S RESPONSIBILITY TO PAY FOR AND REPAIR OR REPLACE ANY ITEMS DAMAGED DURING WORK TO LIKE-NEW CONDITION PRIOR TO PROJECT CLOSE-OUT.
- REFER TO SECTIONS, PLUMBING, MECHANICAL, AND ELECTRICAL DRAWINGS FOR ADDITIONAL DEMOLITION NOTES AND INFORMATION.
- REPORT ANY DISCREPANCIES IMMEDIATELY TO ARCHITECT.
- REPAIR EXISTING WALLS AT LOCATIONS OF ANY DEMOLISHED PORTIONS OF WALLS AND DOOR FRAMES AS REQUIRED FOR NEW SURFACE AND FINISH.
- REMOVE EXISTING WALL FINISHES AS REQUIRED FOR NEW PAINT. RE-SPECIALTY PLANS
- DIGI SECURITY TO REMOVE ALL INTRUSION ITEMS, REMOVE AND REINSTALL OR PROTECT SECURITY CAMERAS, REMOVE ACCESS CONTROL DEVICES, REMOVE ALL ACCESS CONTROL AND SECURITY ITEMS NO LONGER NEEDED.
- REFER TO M.E.P DEMOLITION PLANS AND NOTES FOR ADDITIONAL REMOVAL AND/OR RELOCATION OF SYSTEMS NOT NOTED IN ARCHITECTURAL
- REPAIR WALLS AT LOCATIONS OF ANY REMOVED MECHANICAL, ELECTRICAL OR PLUMBING ITEMS. REPAIR WALLS WITH SAME MATERIAL AS ADJACENT SURFACES TO NEW CONDITION. PAINT AS REQUIRED.
- DIGI (VENDOR CONTRACTOR) TO PULL BACK ALL UNUSED DATA CABLING TO ABOVE CEILING AND NEATLY COIL AND LEAVE IN PLACE.
- REFER TO HVAC PLANS FOR REUSE, REMOVAL AND REPLACEMENT OF EXISTING EQUIPMENT. PATCH AND REPAIR ALL EXISTING WALLS, FLOORS AND ROOFS AS REQUIRED AFTER REMOVAL OR INSTALLATION.
- PATCH AND REPAIR, PLUG HOLES, REMOVE UNNECESSARY HARDWARE AND STICKERS (NOT ALL LABELS) AT EXISTING HM DOORS AND FRAMES FOR NEW PAINT AND HARDWARE AS NOTED, RE SPECIALTY PLAN AND DOOR SCHEDULE/TAGS.
- ALL WALL SURFACES AFFECTED BY DEMO OR NEW WORK MUST BE REPAIRED FOR FINAL FINISH SURFACE RE- SPECIFICATION SECTION 092900 FOR TEXTURE REQUIREMENTS AT PAINTED GYP. BD. WALLS
- CAP OFF ALL UNUSED PLUMBING PIPING AND ELECTRICAL LINES BELOW FLOOR SLAB, ABOVE CEILING OR WITHIN WALLS AS ALLOWED BY CODE. PATCH OR INFILL AREAS AS REQUIRED. RE-MEP
- THERMOSTATS TO BE REMOVED AND REPLACED BY MEP (VENDOR CONTRACTOR). PATCH AND REPAIR WALL SURFACES AS REQUIRED.
- REMOVE ALL OLD ANCHORS, BRACKET, SCREENS ETC. FROM EXISTING WALLS. PATCH ANY REMAINING HOLES TO CREATE LIKE NEW WALL FOR NEW PAINT APPLICATION.
- ANY INTERRUPTION IN SERVICES MUST BE COORDINATED WITH OWNER PRIOR TO SHUT OFF.
- EXISTING FIRE EXTINGUISHER CABINETS AND BRACKETS TO REMAIN. FIRE EXTINGUISHERS TO BE TESTED AND TAGGED.
- REPAIR WALLS TO LIKE NEW CONDITION AT ANY REMOVED SURFACE APPLIED PRODUCTS. REMOVE ANY ADHESIVE OR INCONSISTENT TEXTURE FROM WALL.
- DEMOLISH MINI BLINDS.



**C1 Demo Floor Plan**  
 1/8" = 1'-0"

#	Description
1	REMOVE TELEPHONE BOOTH
2	REMOVE CPT
3	REMOVE ELECTRICAL POLES
4	REMOVE RUBBER BASE
5	REMOVE VCT
6	DEMOLISH WALL AND PREP FOR NEW DOOR
7	DEMOLISH DOOR AND FRAME
8	DEMOLISH CEILING GRID IN HATCHED AREA
9	REMOVE MAGLOCK AND EXIT BUTTON BY VENDOR CONTRACTOR - DIGI
10	DEMOLISH LIGHTS AND CIRCUITRY SUSPENDED FROM CLOUDS, DEMOLISH CONDUIT AND JUNCTION BOXES. TYPICAL OF ALL CLOUD LOCATIONS. RE: ELEC DEMO SHEETS.
11	DEMOLISH PHONE LOCKER
12	REMOVE ACCESS CONTROL
13	DEMO AND CAP PLUMBING FIXTURE
14	DEMO ELEC BOX AND PULL WIRING BACK TO THE BOX IT WAS FED FROM
15	REMOVE SIGN AND PATCH WALL

#	Description
16	REMOVE HAND SANITIZER DISPENSER
18	DEMO ELEC BOX AND WIRING
19	REMOVE EMERGENCY LIGHT
20	DEMOLISH DAMAGED DOWNSPOUT
21	REMOVE EXTENSION CORD/ POWER STRIP
22	REMOVE METAL ADDRESS LETTERS
23	LIGHTING CONTROL SYSTEM TO BE REMOVED, RE-ELECT.
24	DEMOLISH PVC FENCE AND GATES AT GENERATOR ENCLOSURE
25	REMOVE WALL CLOCK
26	DEMO GRAY JUNCTION BOX. ORGANIZE AND FEED CABLING INTO FURNITURE, BY VENDOR CONTRACTOR DIGI
27	DEMO GRAY JUNCTION BOX AND DATA CABLING, BY VENDOR CONTRACTOR DIGI
28	DEMOLISH DRY FIRE SUPPRESSION SYSTEM. REMOVE ALL FIRE ALARM DEVICES AND RETURN TO ROGERS PUBLIC SCHOOLS, CALEB TAYLOR
29	DEMOLISH LIGHT FIXTURES, RE: ELECT.
30	DEMOLISH AND REPLACE RPZ, RE: PLUMB.

#	Description
31	DEMOLISH DUCT AND GRILLES AT HATCHED AREA, RE-MECH.
32	DEMOLISH DEVICE
33	REMOVE SAPPHIRE SIGNAGE
34	DEMOLISH GREEN WALL MOUNT BOX
35	DEMO FIRST AID SIGN
36	DEMOLISH CEILING TILE, PROTECT CEILING GRID, GRID TO REMAIN