

SITE PHOTOS

Table of Contents

Building 201	2
Building 202	10
Building 214	30
Building 216	31
Building 218	44

Building 201



1 - B201 Exterior from Northeast



2 - B201 Exterior from Southeast



3 - B201 South Facade



4 - B201 Covered Entry Brick Deterioration



5 - B202 East Overhead Door Openings



6 - B201 Infill South Doors



7 - B201 Utility Enclosure #1



8 - B201 Utility Enclosure #2



9 - B201 Downspout with No Splash Block



10 - B201 Expansion Joint



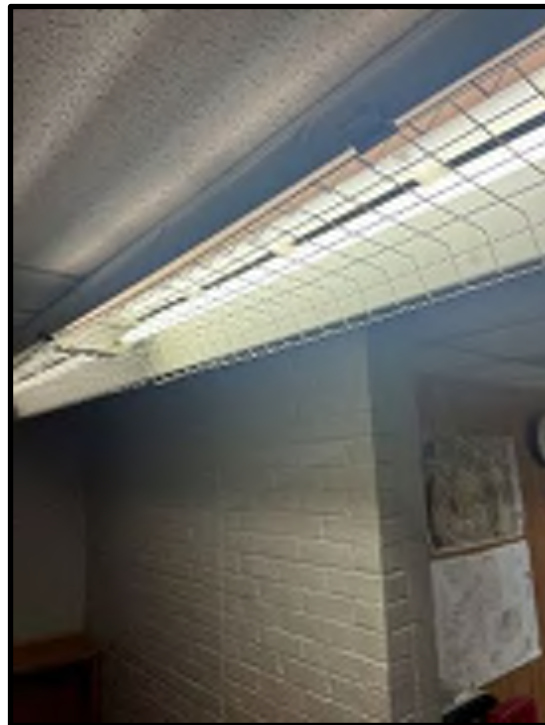
11 - B201 Infill South Doors



12 - B201 Washer and Dryer Curb



13 - B201 Meter



14 - B201 Hallway Light



15 - B201 Equipment Bay and Mezzanine



16 - B201 Locker Curb

Building 202



17 - B202 Flightline Facade



18 - B202 Covered Personnel Entry



19 - B202 Main Entry



20 - B202 Existing Storefront Windows



21 - B202 Water Damage at Covered Entry



22 - B202 East Entry on North Side of Building



23 - B202 Exterior Tank Bay Doors



24 - B202 Northeast Corner



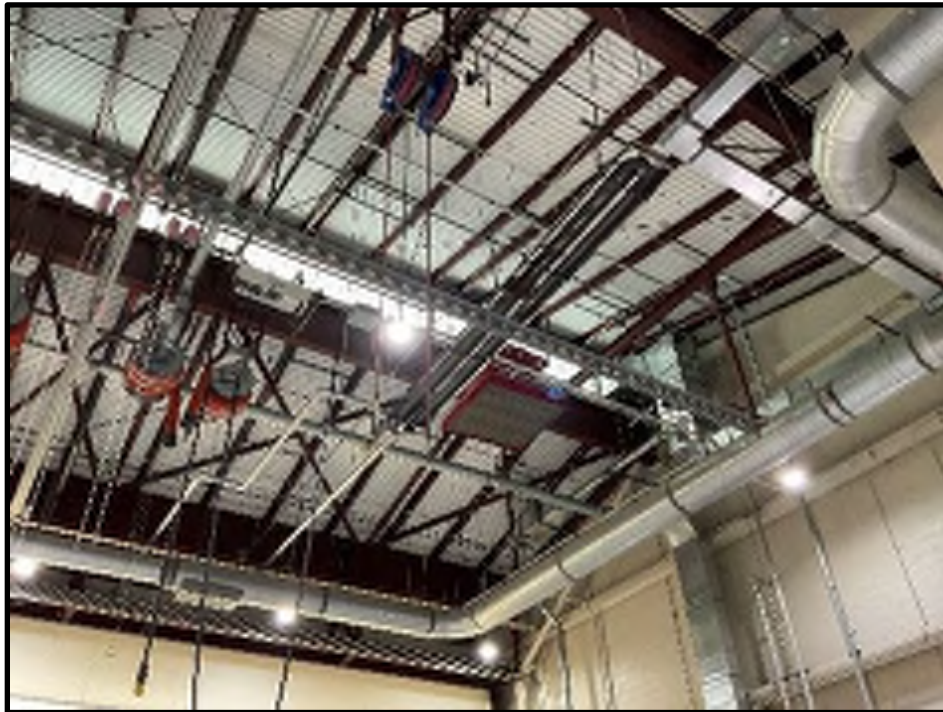
25 - B202 Northwest Corner



26 - Southeast Corner



27 - B202 Transformer Enclosure



28 - B202 Bay 1 Ceiling



29 - B202 Bay 1 Door to be Removed



30 - B202 Example of ACT Damage



31 - B202 Existing Hangar Bay Ceiling



32 -B202 Existing Hangar Bay Epoxy Floor



33 - B202 Existing Kitchenette



34 - B202 Existing Service Sink



35 - B202 Eyewash Station Obscured by Screen Wall



36 - B202 Fire Riser Equipment



37 - B202 Fire Riser Room #1



38 - B202 Fire Riser Room #2



39 - B202 Hangar Bay 1 East Wall (Door to be Removed)



40 - B202 Hangar Bay 1 Storage Rooms



41 - B202 Hangar Bay 2 Ceiling



42 - B202 Hangar Bay 3 Handwash



43 - B202 Hangar Bay 3 North Wall East Side



44 - B202 Hangar Bay 3 North Wall West Side



45 - B202 Hangar Bay 3 Tyre Sink



46 - B202 Paint Booth



47 - B202 Paint Booth Interior



48 - B202 Screen Wall to be Removed, Typical



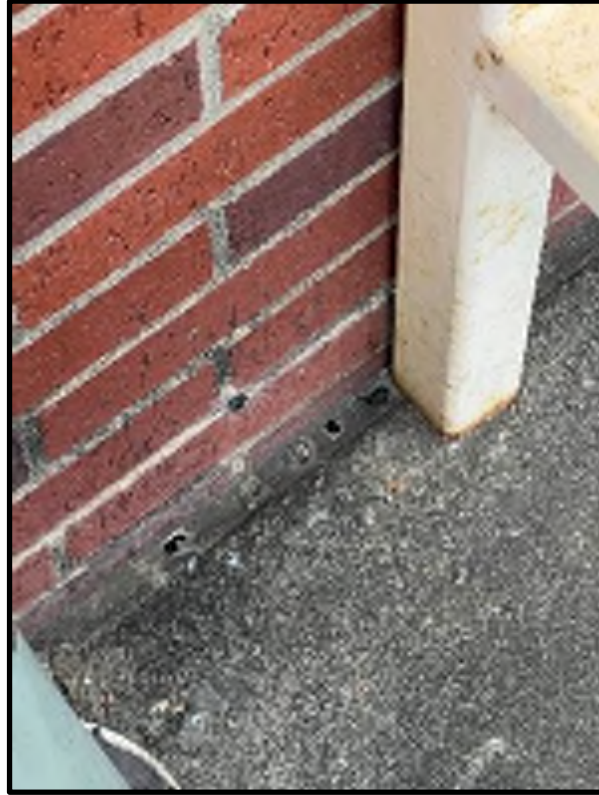
49 - B202 Tank Bay Screen Wall to be Removed



50 - B202 Utility Enclosure



51 - B202 Utility Enclosure



52 - B202 Expansion Joint



53 - B202 Meter



54 - B202 Foam Suppression System

Building 214



55 - B214 Exterior View #1



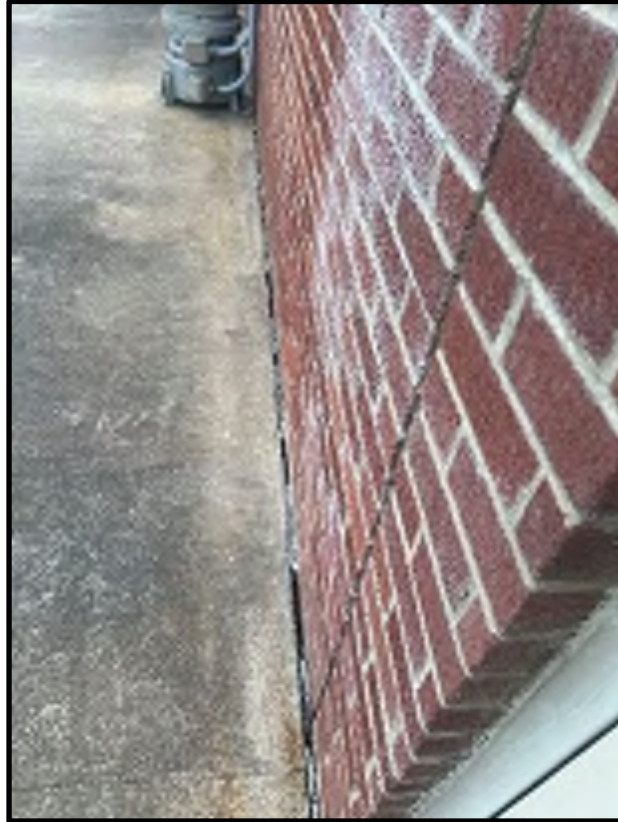
56 - B214 Exterior View #2



57 - B214 Exterior View #3



58 - B214 Exterior View #4



59 - B214 Expansion Joint



60 - B214 Meter



61 - B214 Comm Device #1



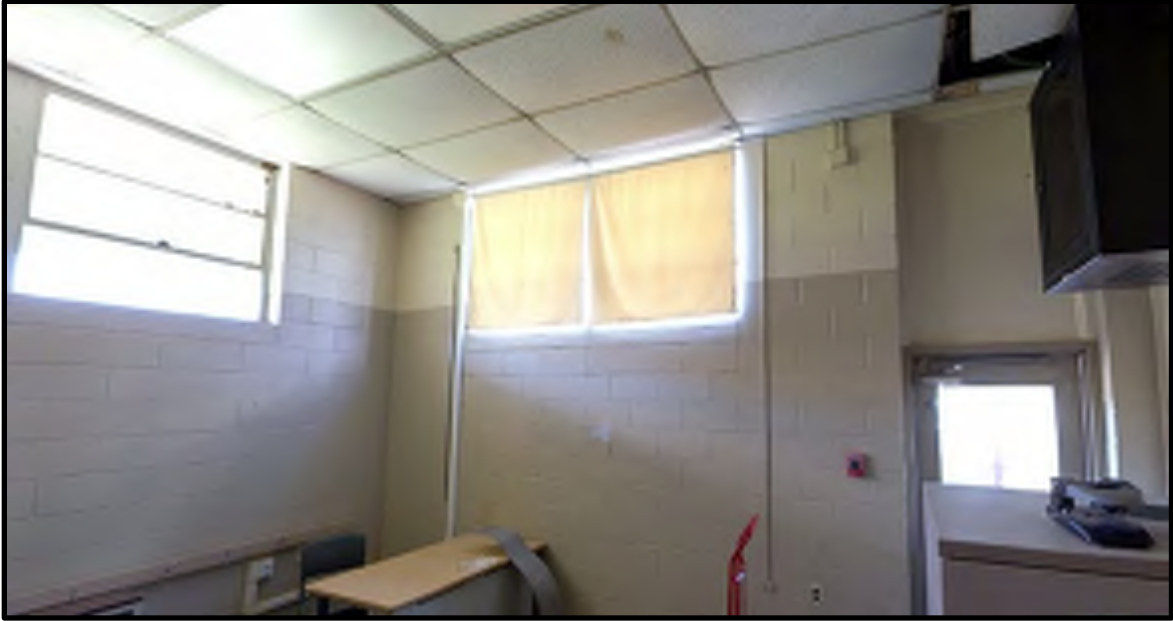
62 - B214 Comm Device #2



63 - B214 Old Electrical Panel



64 - B214 Breakroom



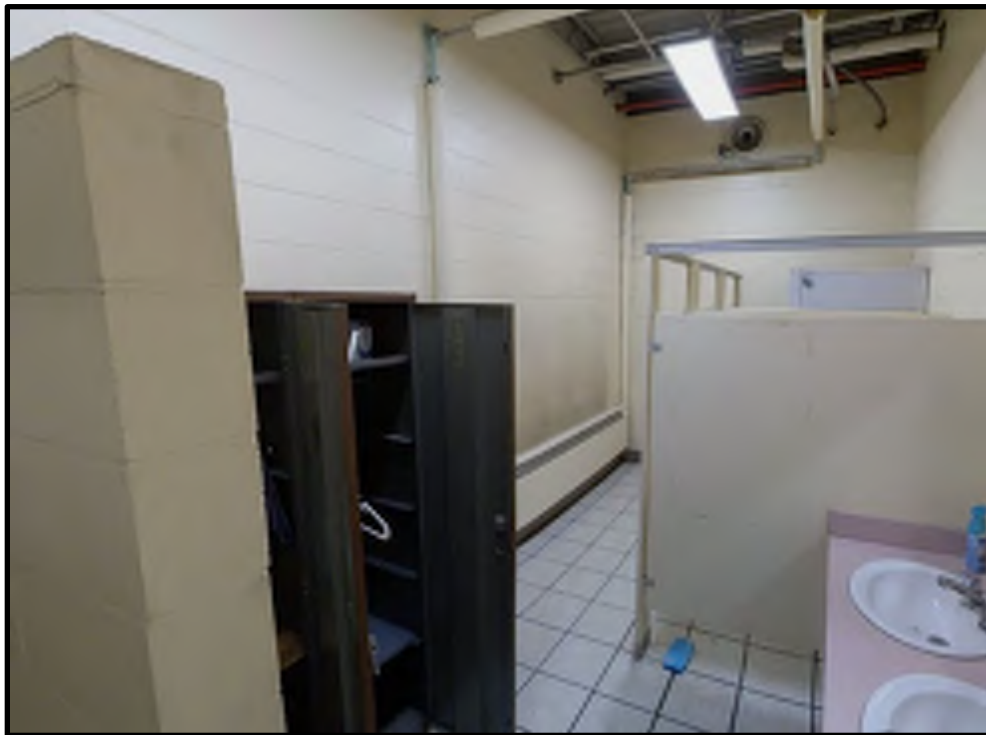
65 - B214 Existing Office



66 - B214 Mezzanine #1



67 - B214 Mezzanine #2



68 - B214 Restroom



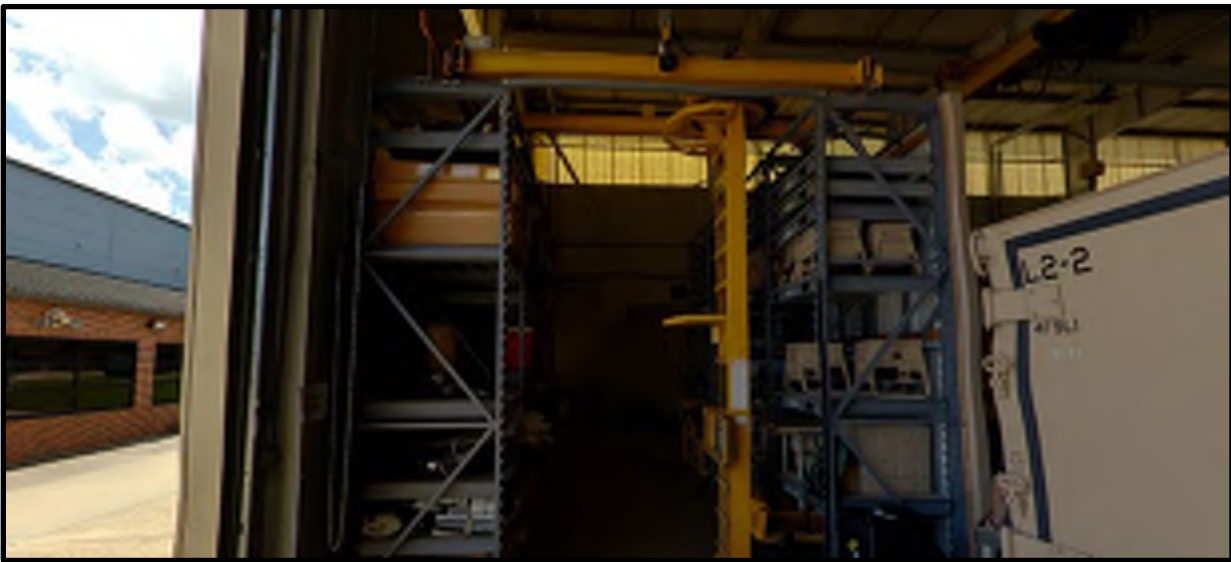
69 - B214 Storage Area #1



70 - B214 Storage Area #2



71 - B214 Storage Area #3



72 - B214 Storage Rack System



73 - B214 Work Bay View #1



74 - B214 Work Bay View #2



75 - B214 Work Bay View #3



76 - B214 Work Bay View #4

Building 216



77 - B216 Area of Addition



78 - B216 Downspouts by Addition



79 - B216 Expansion Joint



80 - B216 Meter



81 – B216 F35 Area Crane



82 - B216 F35 Area North View



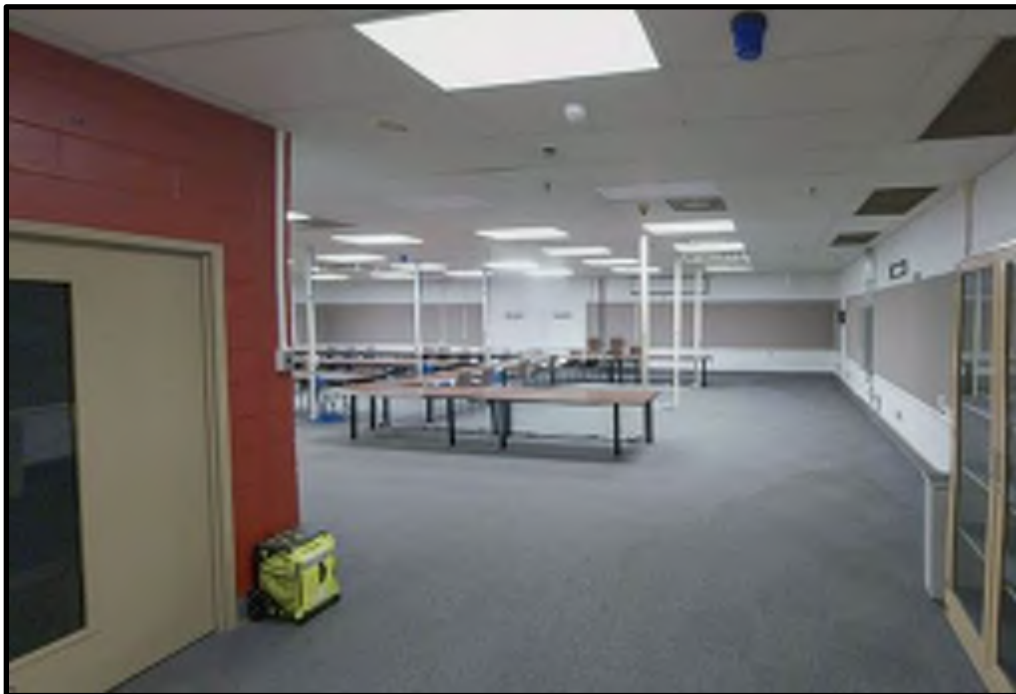
83 - B216 F35 Area North View #2



84 - B216 F35 Area South View



85 - B216 NW Secure Area AIS Shop



86 - B216 NW Secure Area North Wall



87 - B216 NW Secure Area South Wall



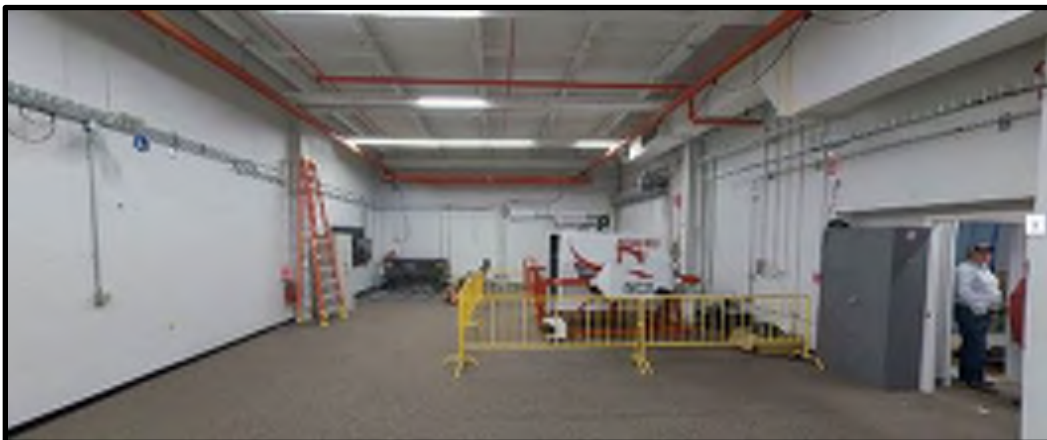
88 - B216 NW Secure Area VTC Conference Room



89 – B216 NW Secure Area West Wall



90 – B216 Secure Area North Wall



91 – B216 Secure Area South Wall

Building 218



92 - B218 Exterior View #1



93 - B218 Exterior View #2



94 - B218 Exterior View #3



95 - B218 North Side Planting Bed



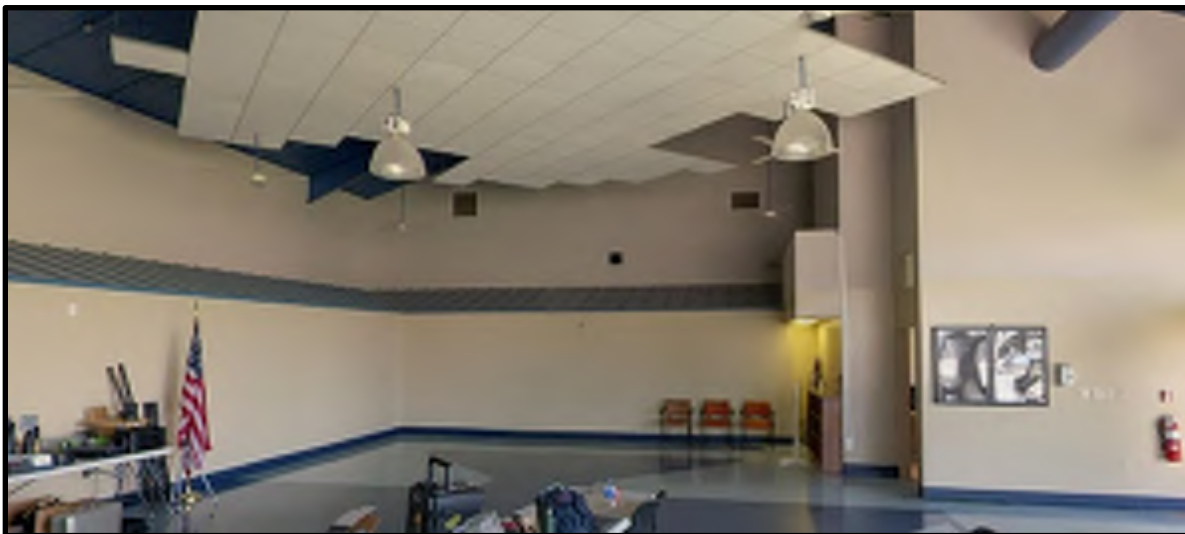
96 - B218 Meter



97 - B218 Comm Equipment at Entry



98 - B218 Assembly Area View #1



99 - B218 Assembly Area View #2



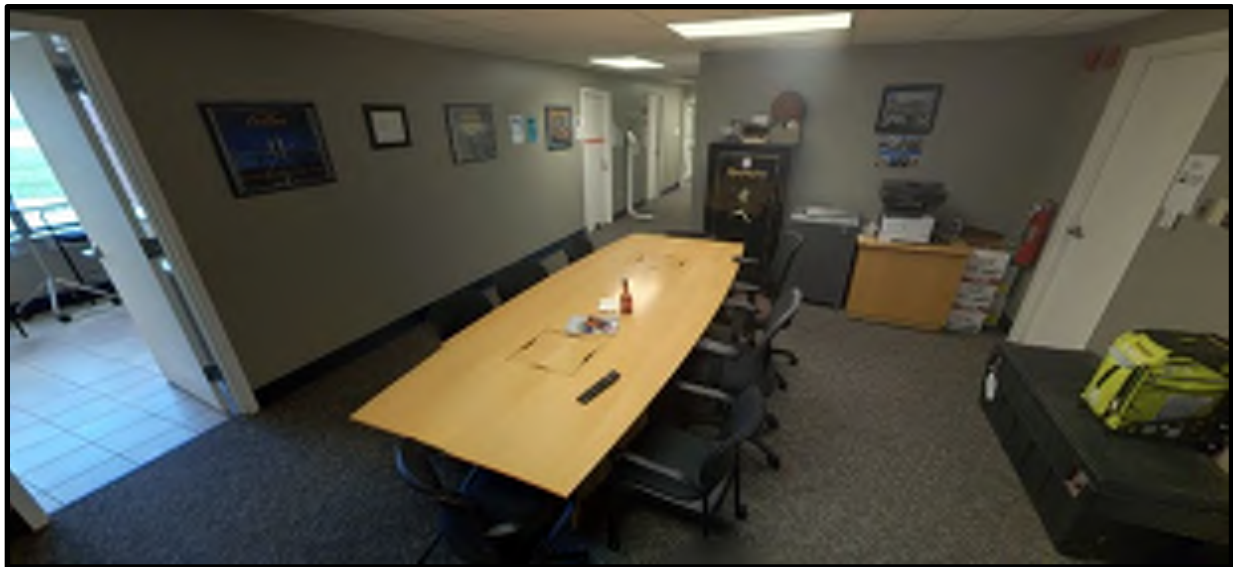
100 - B218 Breakroom



101 - B218 Hall #1



102 - B218 Hall #2



103 - B218 Meeting Area



104 - B218 Office #1



105 - B218 Office #2



106 - B218 Restroom