

Building 201



1 - B201 Exterior from Northeast



2 - B201 Exterior from Southeast



3 - B201 South Facade



4 - B201 Covered Entry Brick Deterioration



5 - B202 East Overhead Door Openings



6 - B201 Infill South Doors



7 - B201 Utility Enclosure #1



8 - B201 Utility Enclosure #2



9 - B201 Downspout with No Splash Block



10 - B201 Expansion Joint



11 - B201 Infill South Doors



12 - B201 Washer and Dryer Curb



13 - B201 Meter



14 - B201 Hallway Light



15 - B201 Equipment Bay and Mezzanine



16 - B201 Locker Curb

Building 202



17 - B202 Flightline Facade



18 - B202 Covered Personnel Entry



19 - B202 Main Entry



20 - B202 Existing Storefront Windows



21 - B202 Water Damage at Covered Entry



22 - B202 East Entry on North Side of Building



23 - B202 Exterior Tank Bay Doors



24 - B202 Northeast Corner



25 - B202 Northwest Corner



26 - Southeast Corner



27 - B202 Transformer Enclosure



28 - B202 Bay 1 Ceiling



29 - B202 Bay 1 Door to be Removed



30 - B202 Example of ACT Damage



31 - B202 Existing Hangar Bay Ceiling



32 -B202 Existing Hangar Bay Epoxy Floor



33 - B202 Existing Kitchenette



34 - B202 Existing Service Sink



35 - B202 Eyewash Station Obscured by Screen Wall



36 - B202 Fire Riser Equipment



37 - B202 Fire Riser Room #1



38 - B202 Fire Riser Room #2



39 - B202 Hangar Bay 1 East Wall (Door to be Removed)



40 - B202 Hangar Bay 1 Storage Rooms



41 - B202 Hangar Bay 2 Ceiling



42 - B202 Hangar Bay 3 Handwash



43 - B202 Hangar Bay 3 North Wall East Side



44 - B202 Hangar Bay 3 North Wall West Side



45 - B202 Hangar Bay 3 Tyre Sink



46 - B202 Paint Booth



47 - B202 Paint Booth Interior



48 - B202 Screen Wall to be Removed, Typical



49 - B202 Tank Bay Screen Wall to be Removed



50 - B202 Utility Enclosure



51 - B202 Utility Enclosure



52 - B202 Expansion Joint



53 - B202 Meter



54 - B202 Foam Suppression System

Building 214



55 - B214 Exterior View #1



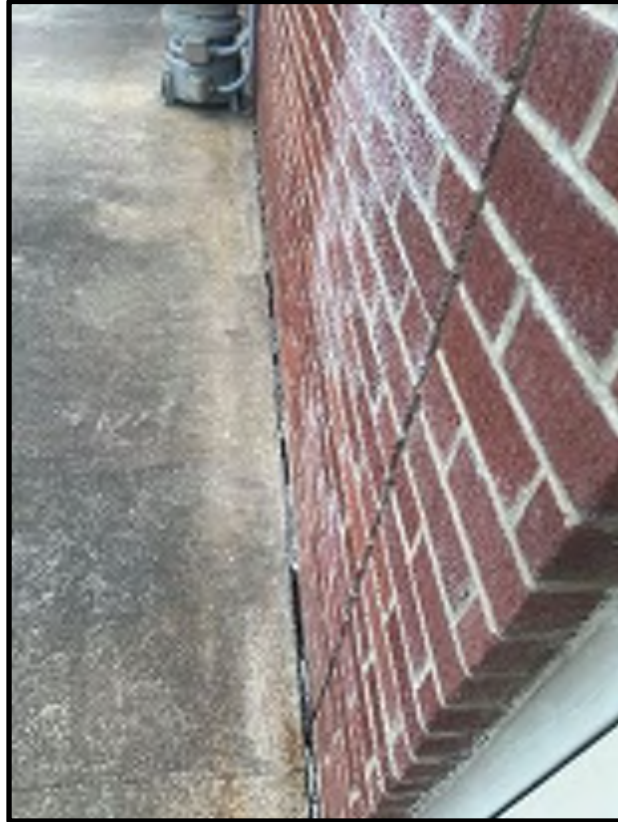
56 - B214 Exterior View #2



57 - B214 Exterior View #3



58 - B214 Exterior View #4



59 - B214 Expansion Joint



60 - B214 Meter



61 - B214 Comm Device #1



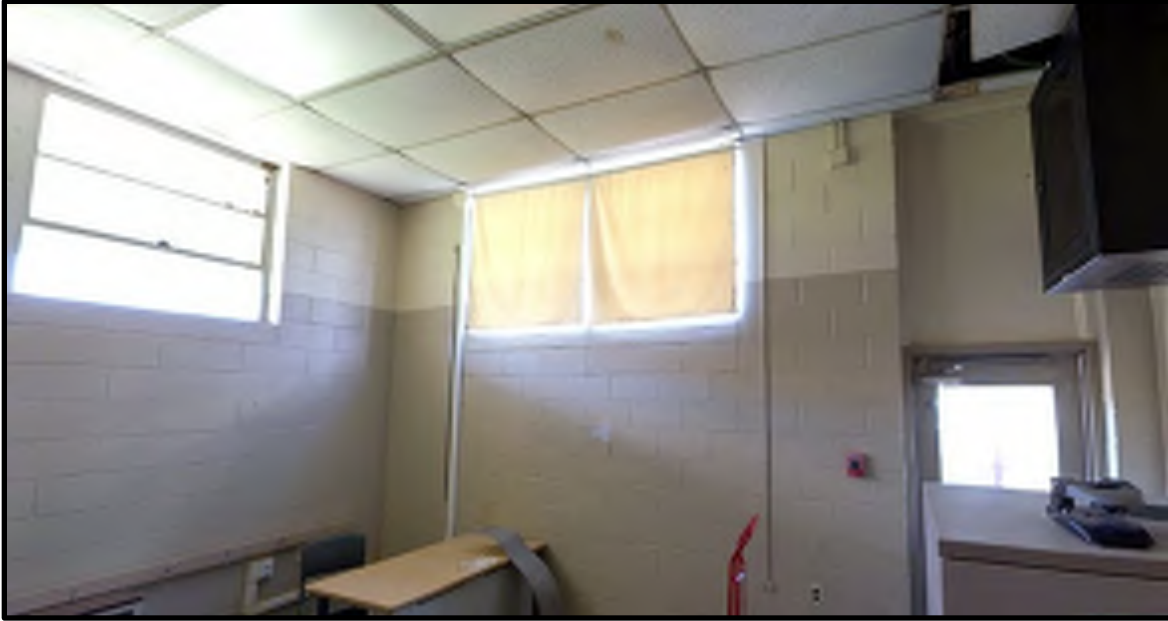
62 - B214 Comm Device #2



63 - B214 Old Electrical Panel



64 - B214 Breakroom



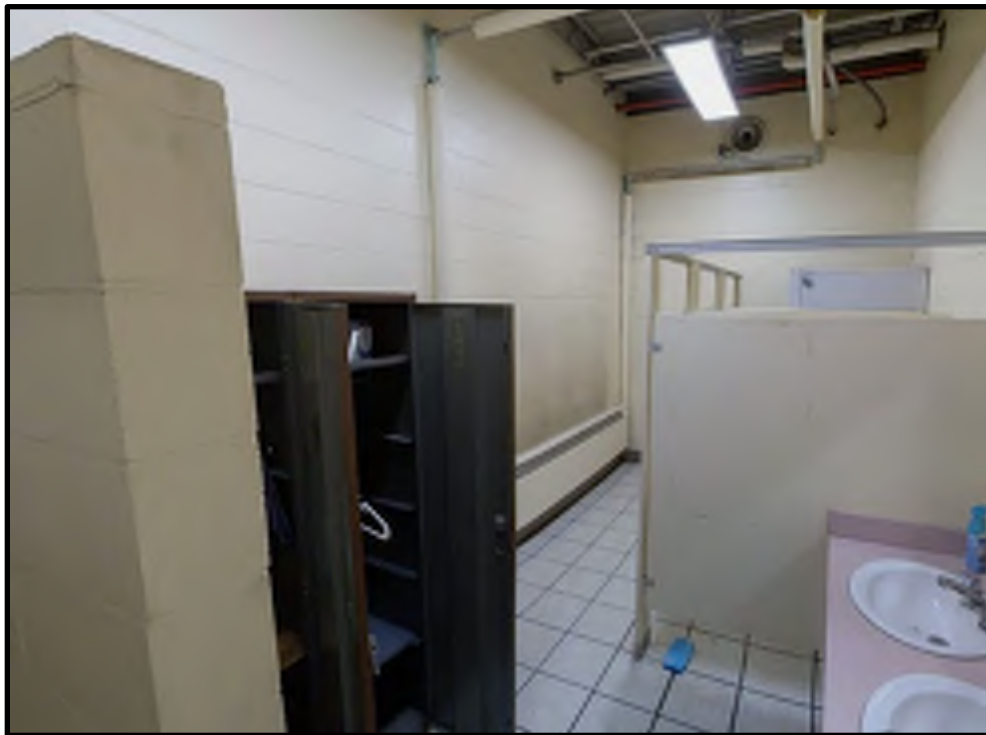
65 - B214 Existing Office



66 - B214 Mezzanine #1



67 - B214 Mezzanine #2



68 - B214 Restroom



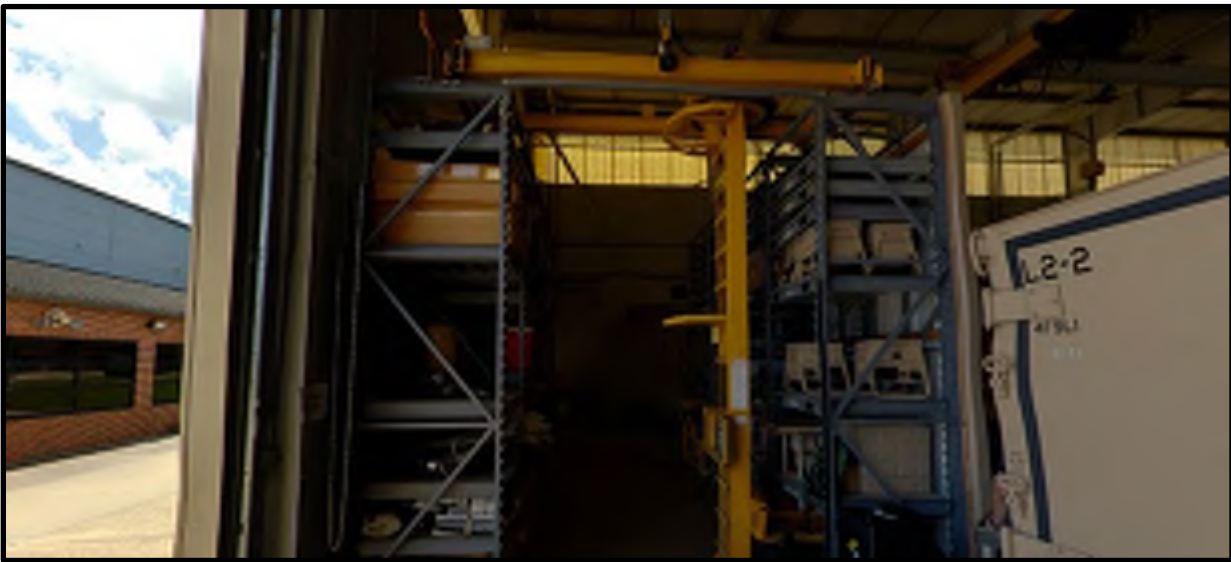
69 - B214 Storage Area #1



70 - B214 Storage Area #2



71 - B214 Storage Area #3



72 - B214 Storage Rack System



73 - B214 Work Bay View #1



74 - B214 Work Bay View #2



75 - B214 Work Bay View #3



76 - B214 Work Bay View #4

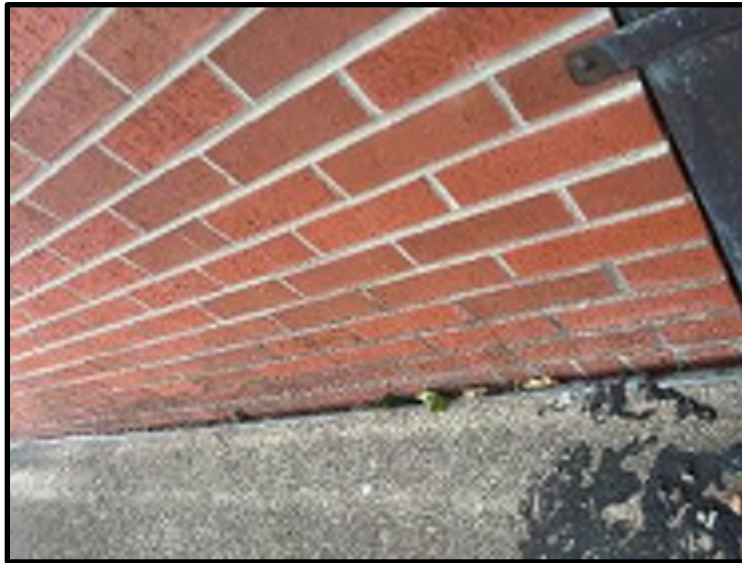
Building 216



77 - B216 Area of Addition



78 - B216 Downspouts by Addition



79 - B216 Expansion Joint



80 - B216 Meter



81 – B216 F35 Area Crane



82 - B216 F35 Area North View



83 - B216 F35 Area North View #2



84 - B216 F35 Area South View



85 - B216 NW Secure Area AIS Shop



86 - B216 NW Secure Area North Wall



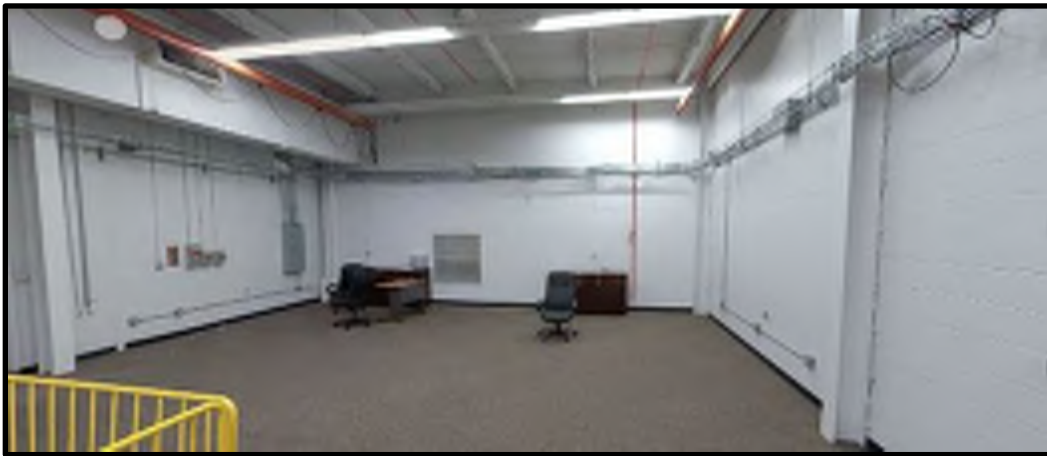
87 - B216 NW Secure Area South Wall



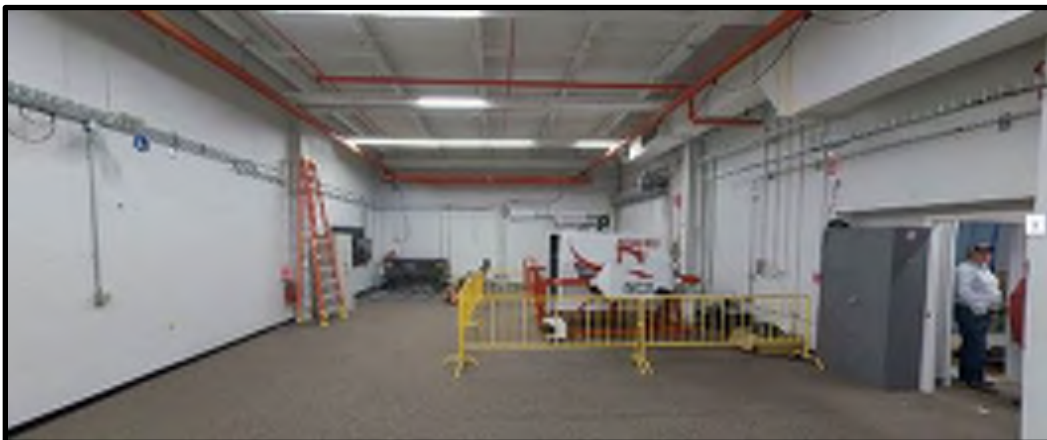
88 - B216 NW Secure Area VTC Conference Room



89 – B216 NW Secure Area West Wall



90 – B216 Secure Area North Wall



91 – B216 Secure Area South Wall

Building 218



92 - B218 Exterior View #1



93 - B218 Exterior View #2



94 - B218 Exterior View #3



95 - B218 North Side Planting Bed



96 - B218 Meter



97 - B218 Comm Equipment at Entry



98 - B218 Assembly Area View #1



99 - B218 Assembly Area View #2



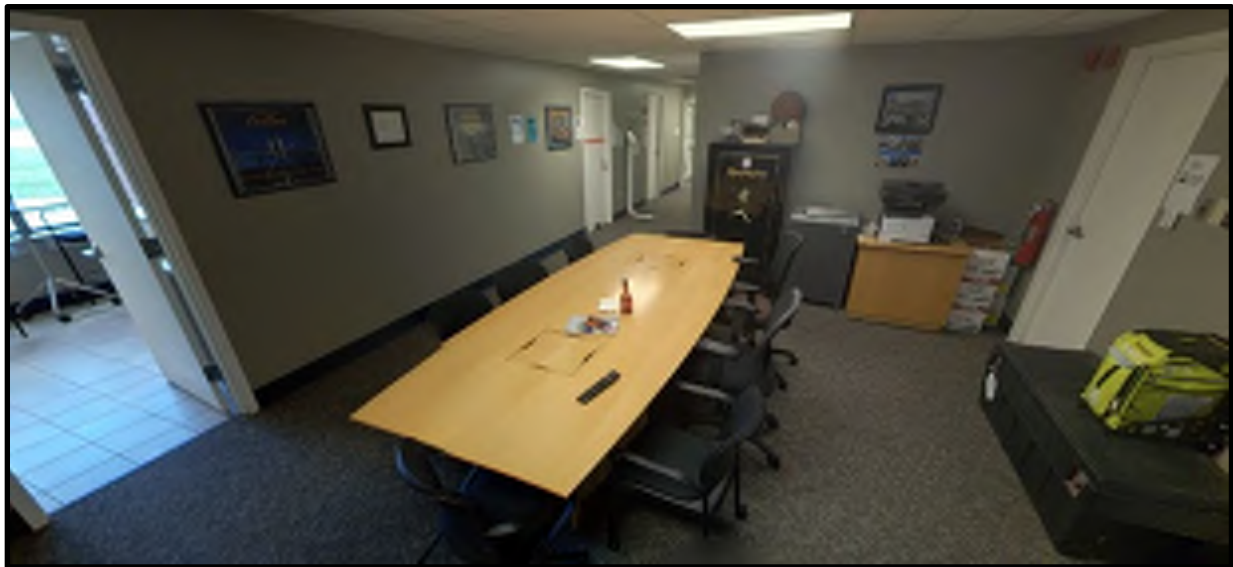
100 - B218 Breakroom



101 - B218 Hall #1



102 - B218 Hall #2



103 - B218 Meeting Area



104 - B218 Office #1



105 - B218 Office #2



106 - B218 Restroom

Attachment E – AsBuilt Drawings (sent separately electronically)

Attachment F – Hydrant Flow Test Results



FIRE HYDRANT FLOW TEST

HYDRANT # & LOCATION Hydrants #21 & 22, Voodoo Road, Ebbing ANG Base, Ft. Smith, AR DATE: 5/22/2024

TEST BY: Traci Bangor Day of Week: Wednesday TIME OF DAY: 7:45am MIN. OF FLOW: 5

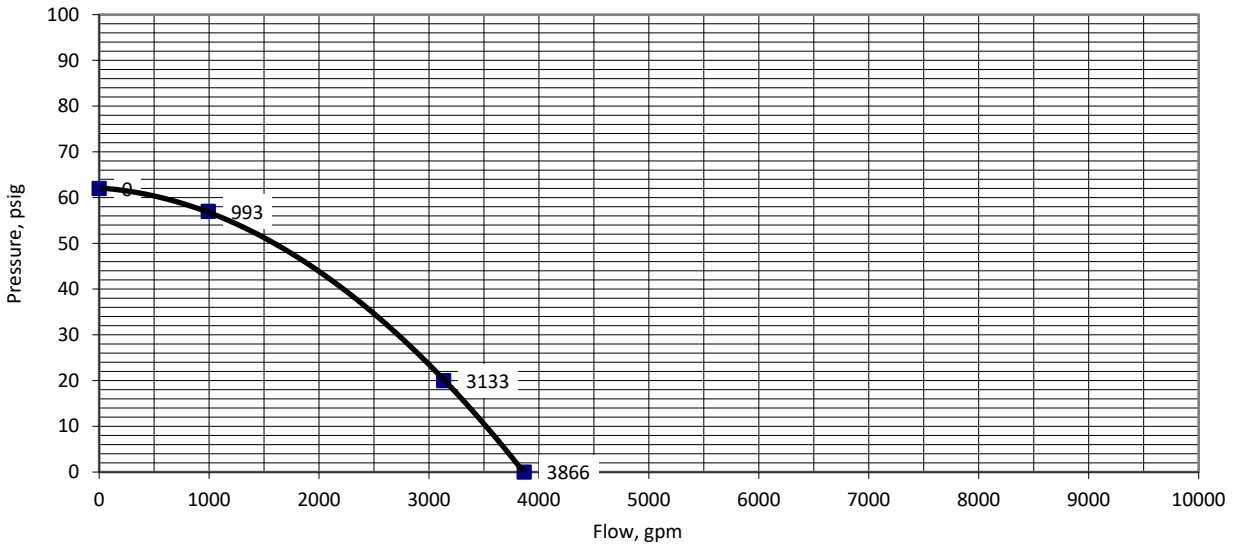
WATER SUPPLIED BY: Water Tower at Phantom Drive & Voodoo Road (approx. 800 feet west of flow hydrant)

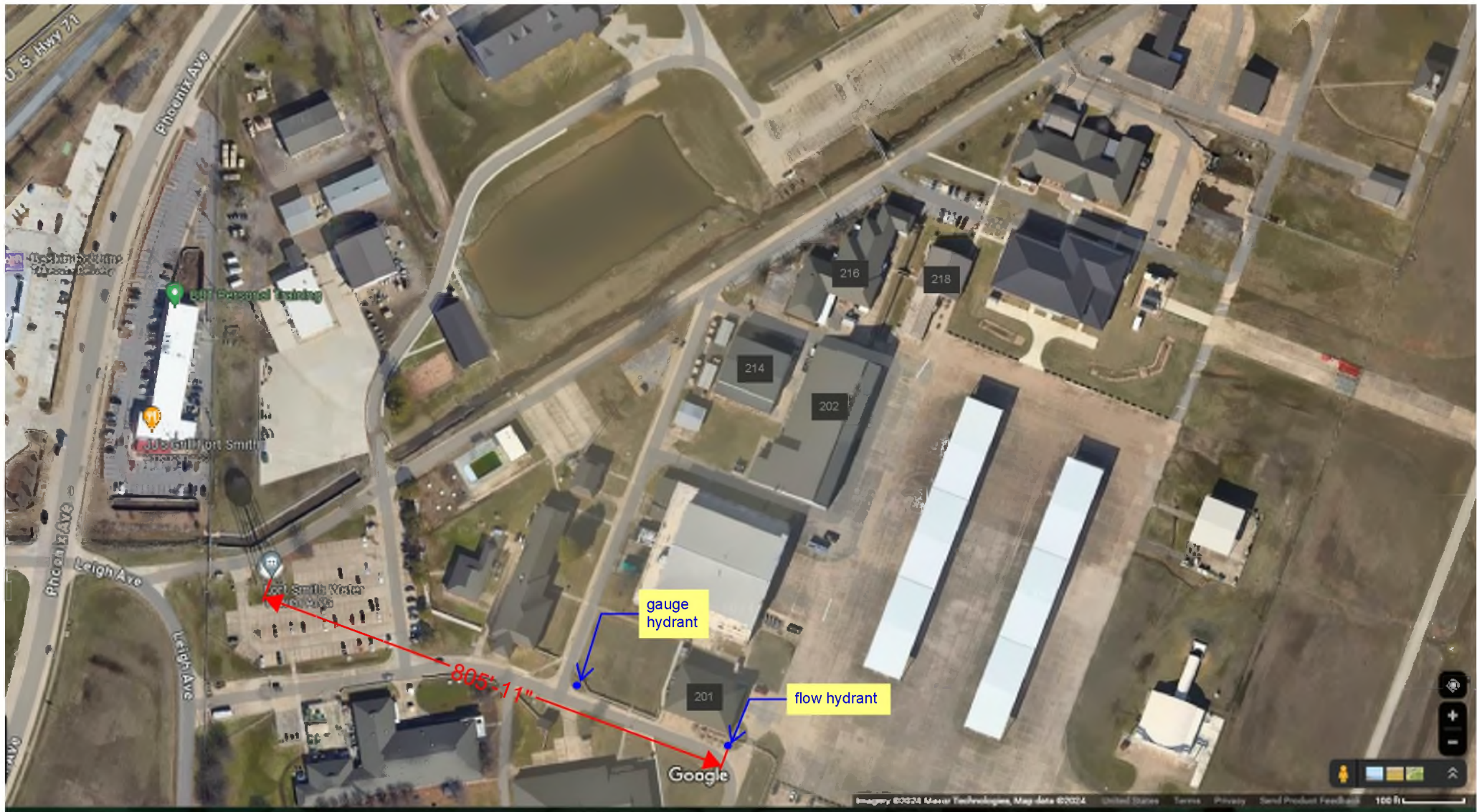
PURPOSE OF TEST:

DATA

FLOW HYDRANT(S)	A1	A2	A3
SIZE OPENING:	<u>2.5</u>	_____	_____
COEFFICIENT:	<u>0.9</u>	_____	_____
PITOT READING:	<u>35</u>	_____	_____
GPM:	<u>993</u>	_____	_____
TOTAL FLOW DURING TEST:	<u>993</u> GPM		
STATIC READING:	<u>62</u> PSI	RESIDUAL: <u>57</u> PSI	
RESULTS:	AT 20 PSI RESIDUAL <u>3133</u> GPM	AT 0 PSI <u>3866</u> GPM	
ESTIMATED CONSUMPTION:	<u>4963</u> GAL.		

REMARKS:







FIRE HYDRANT FLOW TEST

HYDRANT # & LOCATION Hydrants #16 & 17, Super Sabre Street, Ebbing ANG Base, Ft. Smith, AR

DATE: 5/22/2024

TEST BY: Traci Bangor Day of Week: Wednesday TIME OF DAY: 8:00am MIN. OF FLOW: 5

WATER SUPPLIED BY: Water Tower at Phantom Drive & Voodoo Road (approx. 795 feet northwest of flow hydrant)

PURPOSE OF TEST:

DATA

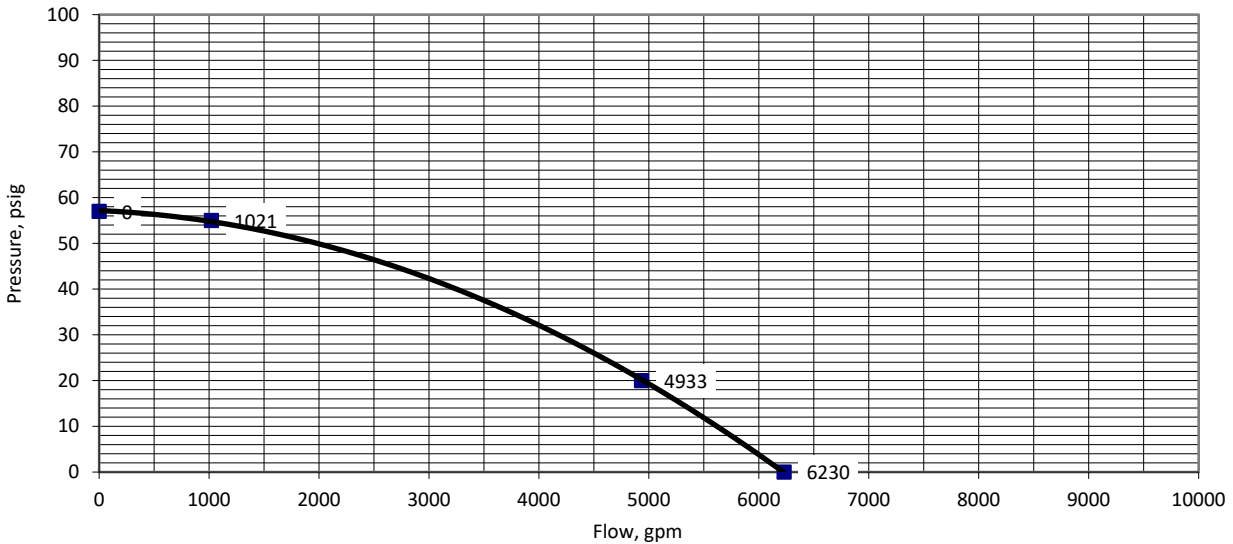
FLOW HYDRANT(S)	A1	A2	A3
SIZE OPENING:	<u>2.5</u>	_____	_____
COEFFICIENT:	<u>0.9</u>	_____	_____
PITOT READING:	<u>37</u>	_____	_____
GPM:	<u>1021</u>	_____	_____
TOTAL FLOW DURING TEST:	<u>1021</u> GPM		

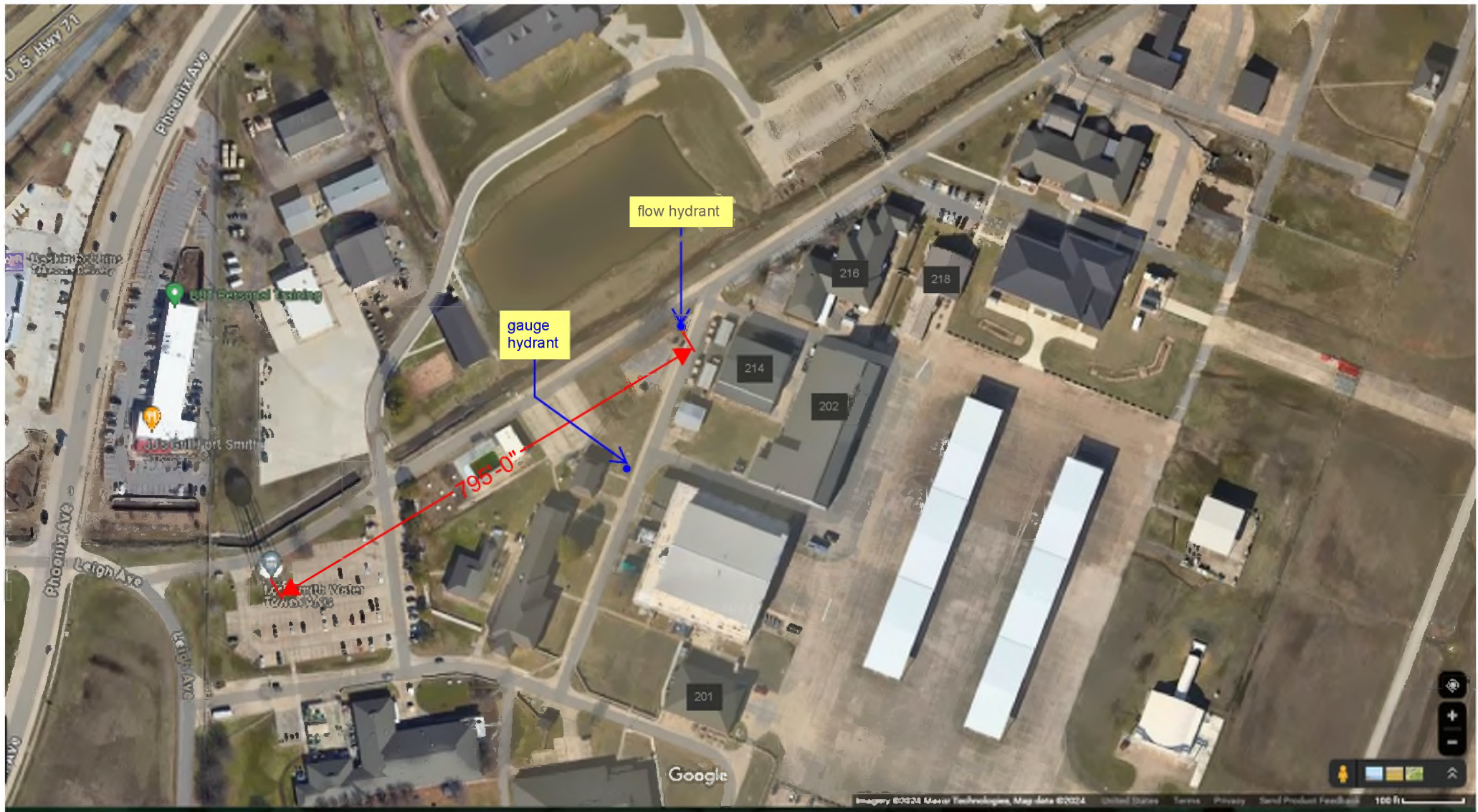
STATIC READING: 57 PSI RESIDUAL: 55 PSI

RESULTS: AT 20 PSI RESIDUAL 4933 GPM AT 0 PSI 6230 GPM

ESTIMATED CONSUMPTION: 5103 GAL.

REMARKS:





Attachment G – Main Ramp Apron Clearances

Attachment H – List of Pyro Room Contents

EXPEDIENT FACILITY LICENSE

Luke AFB, AZ

425th Fighter Squadron

23-10

FACILITY DATA

Building 418

Maintenance Facility

56 OG OI 91-291

4 (A) Support General Inspections Room, Cinder Block w/ Steel Roof

EXPEDIENT FACILITY LICENSE
 THIS FACILITY IS REQUIRED TO BE OPERATED
 IN ACCORDANCE WITH THE FOLLOWING

AREA	DESCRIPTION	QTY	REMARKS	STATUS
1.4	G	52		N/A 4DE
1.4	G	52		N/A 4DE
1.4	S	26	OUTER LOCKER ROOMS SUFFICIENT TO HOLD 100 PERSONS	N/A 4
1.4	S	52	OUTER RECEPTION AREA, ACCESSIBLE TO ALL PERSONNEL	N/A 4
1.4	S	52	RECEPTION AREA, UNDER SUPPORT STRUCTURE OF THE FACILITY	N/A 4
1.4	S	52	RECEPTION AREA, UNDER SUPPORT STRUCTURE OF THE FACILITY	N/A 4
1.4	S	52	VENTILATION DEVICE, AUTO FLUSH & P.M.B. 1077-01-000-0000	N/A 4
1.4	S	52	VENTILATION DEVICE, FLOOR MOUNTED 1077-01-020-1480	N/A 4

III. CERTIFICATION

I CERTIFY that the above described facility is required in support of the mission of the above organization

DATE: 19 Oct 23 Robert A. Nitzy, Lt Col USAF Commander

IV. DEDICATED PERSONNEL STATEMENT

DATE: 27 Oct 23 TODD THOMAS A O3-12 USAF AETU 56 RWISEW

1. Two para ZA 1000 are contingents will be immediately available for the process
2. As of next to a lock number and also authorized "SUITABLE" SUBSTITUTE ISSUE. IAW DESH 0055 09 AFMAN 91-291 VS E36 1 1 6 2
3. Do not exceed the personnel limit of 3 SUPERVISORS, 2 WORKERS, and 2 CASUALS using explosive operations
4. THIS LICENSE SUPERSEDES ALL PREVIOUS ISSUED FOR THIS LOCATION

V. COORDINATION

56 EMS/MASO 56 CES/CEFP 56 SF9/ISSS Annual Review Annual Review